



2009 Mazda LINE-UP  
OUR LOWEST PRICES OF THE CENTURY.



GT-V6 model with Luxury Package shown

'09 Mazda6 MSRP \$22,495\* DOWN FROM \$24,495\*\*

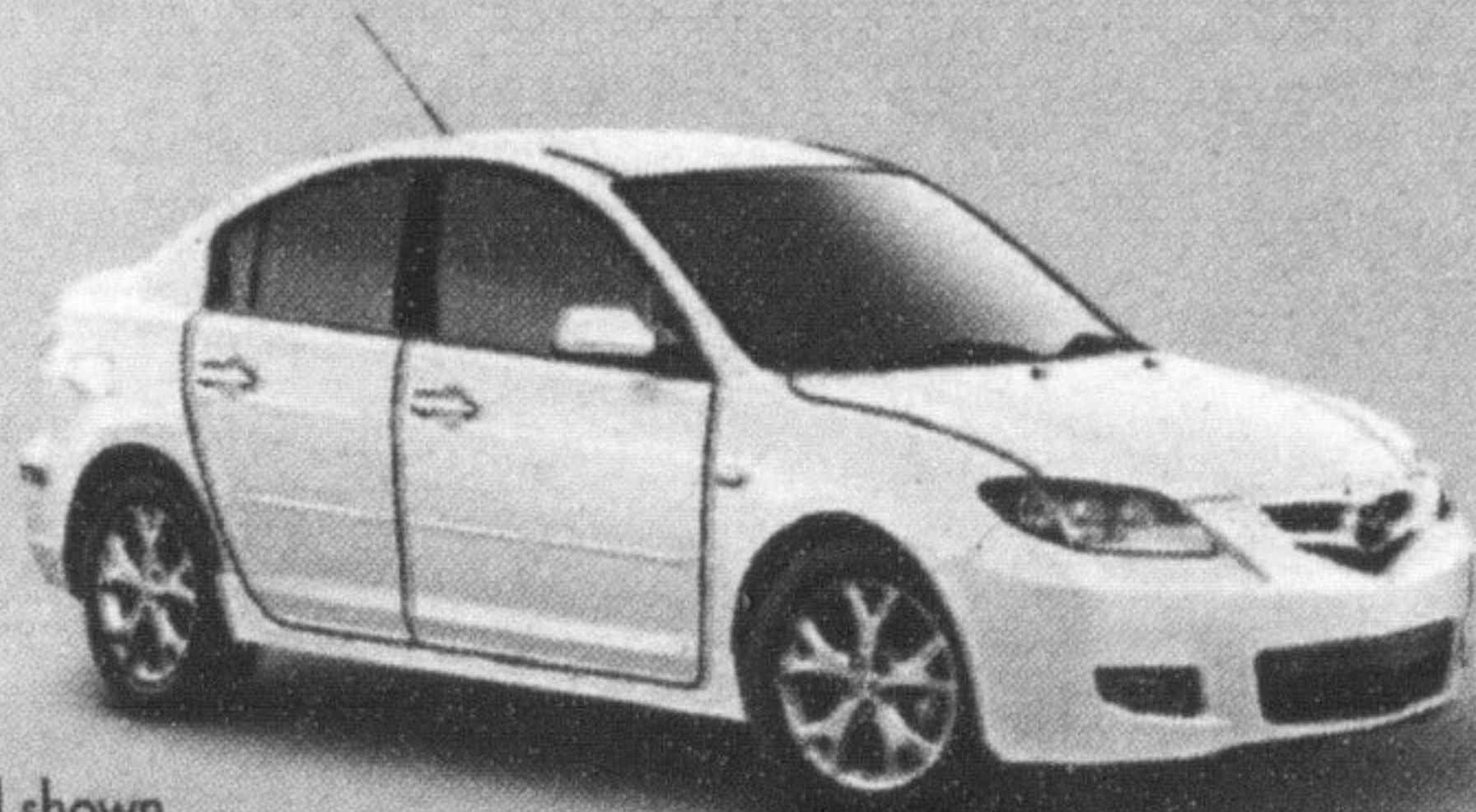
LEASE FROM **\$288**<sup>††</sup> AT **5.9%**  
PER MONTH FOR 48 MONTHS LEASE APR WITH \$3,695 DOWN PAYMENT

SO SECURITY DEPOSIT  
LEASE PAYMENT INCLUDES  
FREIGHT AND P.D.E.

\*Totally, completely, 100% new MAZDA6 • Fuel-conscious 2.5 L, I4 engine or optional 272-hp V6 • Standard 17" alloy wheels, power windows and locks • Remarkable 496 L of cargo capacity

**THE MAZDA DRIVING DIVIDEND**

**VALUE. EMOTION. ENGINEERING.** We've re-priced 2009 Mazdas to carry our lowest starting MSRPs of the 21st century. Which means you can get the Mazda you've always dreamed of. The same Mazda that will give you the performance and handling that get your heart racing. And cutting-edge safety that gives you peace of mind. The Mazda Driving Dividend. Zoom-Zoom. Forever. [mazda.ca](http://mazda.ca)



GT model shown

'09 MAZDA 3 GX  
MSRP \$14,895\* DOWN FROM \$16,895\*\*

LEASE FROM **\$188**<sup>††</sup> AT **5.9%**  
PER MONTH FOR 48 MONTHS LEASE APR WITH \$2,495 DOWN PAYMENT

SO SECURITY DEPOSIT  
LEASE PAYMENT INCLUDES  
FREIGHT AND P.D.E.

• Fuel-efficient 148-hp, 2.0 L engine • Standard front, side and side curtain air bags • Standard 4-wheel disc brakes with Anti-lock Brake System (ABS) • Tilt and telescopic steering wheel



GT model shown

'09 MAZDA 3 SPORT GX  
MSRP \$15,895\* DOWN FROM \$17,895\*\*

LEASE FROM **\$188**<sup>††</sup> AT **5.9%**  
PER MONTH FOR 48 MONTHS LEASE APR WITH \$2,695 DOWN PAYMENT

SO SECURITY DEPOSIT  
LEASE PAYMENT INCLUDES  
FREIGHT AND P.D.E.

• Fuel-efficient 148-hp, 2.0 L engine • Standard front, side and side curtain air bags • Standard 4-wheel disc brakes with Anti-lock Brake System (ABS) • Hatchback for more cargo versatility



★★★★★  
HIGHEST GOVERNMENT FRONTAL CRASH SAFETY RATING\*



GT model shown

'09 MAZDA 5 GS  
MSRP \$19,995\* DOWN FROM \$20,795\*\*

LEASE FROM **\$248**<sup>††</sup> AT **5.9%**  
PER MONTH FOR 48 MONTHS LEASE APR WITH \$3,395 DOWN PAYMENT

SO SECURITY DEPOSIT  
LEASE PAYMENT INCLUDES  
FREIGHT AND P.D.E.

• Canada's Most Fuel-Efficient Vehicle in its Class\* • Three-row seating for six • Dual sliding doors • Standard front, side and side curtain air bags

**EXPERIENCE EMOTION IN MOTION AT YOUR LOCAL MAZDA DEALER.**

TO LOCATE A DEALER NEAR YOU, VISIT [WWW.MAZDA.CA](http://WWW.MAZDA.CA) OR CALL 1-800-263-4680.

**READY TO ROLL** OUR PRE-DELIVERY COMMITMENT MEANS EVERY NEW MAZDA IS CHECKED OUT, GASSED UP AND FITTED WITH FLOOR MATS. • ASK ABOUT OUR OUTSTANDING COMPREHENSIVE AND POWERTRAIN WARRANTY COVERAGE. ASK ABOUT OUR SPECIAL OFFERS FOR EXISTING MAZDA CUSTOMERS. GRADUATES GET AN ADDITIONAL CASH AWARD OF UP TO \$750 TOWARDS A PURCHASE OR LEASE.

†Available on select model lines only. Based on Mazda MSRP pricing since January 1, 2000. Does not include MSRP adjustments based on Incentives and/or Stackable Cash. \*\*MSRP for new 2009 Mazda6 GS-14 (G4S169AA00)/2009 Mazda3 GX (D4XS59AA00)/2009 Mazda3 Sport GX (D5XS59AA00)/2009 Mazda5 GS (E6SD59AA00) is \$22,495/\$14,895/\$15,895/\$19,995. As shown, MSRP for new 2009 Mazda6 GT-V6 with Luxury Package (G4T889AB00)/2009 Mazda3 GT (D4TD59AA00)/2009 Mazda3 Sport GT (D5TD59AA00)/2009 Mazda5 GT (E6TD59AA00) is \$35,060/\$20,945/\$21,495/\$23,295. Excludes \$1,395 freight and P.D.E. for all 2009 Mazda6/Mazda3 models and \$1,535 for all 2009 Mazda5 models. PPSA registration fee of \$65 is extra. \*\*\*MSRP for new 2008 Mazda6 GS-14 (G4SD58AA00)/2008.5 Mazda3 GX (D4XS88AA00)/2008.5 Mazda3 Sport GX (D5XS88AA00)/2008 Mazda5 GS (E6SD58AA00) is \$24,495/\$16,895/\$17,895/\$20,795. Excludes \$1,395 freight and P.D.E. for all 2008 Mazda6/2008.5 Mazda3 models and \$1,535 for all 2008 Mazda5 models. PPSA registration fee of \$65 is extra. ††Offers available on retail leases of new 2009 Mazda6 GS-14, 2009 Mazda3 GX, 2009 Mazda3 Sport GX and 2009 Mazda5 GS. Dealer participation may be necessary. Total lease obligation for new 2009 Mazda6 GS-14 (G4S169AA00) is \$17,519, including down payment of \$3,695. Total lease obligation for new 2009 Mazda3 Sport GX (D5XS59AA00) is \$11,719, including down payment of \$2,695. Total lease obligation for new 2009 Mazda5 GS (E6SD59AA00) is \$15,299, including down payment of \$3,395. For other models see your dealer for details. Lease payment includes freight and P.D.E. of \$1,395 for all 2009 Mazda6/Mazda3 models and \$1,535 for all 2009 Mazda5 models. PPSA registration fee of \$46 for a 48-month term extra. 20,000 km per year mileage allowance applies; if exceeded, additional 10¢ per km applies. 25,000 km leases also available. For Purchase/Finance/Lease - \$5 DMVIC transaction fee, licence, insurance, taxes and other dealer charges are extra. Down payment may be required. Dealer may sell/lease for less. Limited quantities available. Dealer order or trade may be necessary on certain vehicles. \*2009 Mazda6 and Mazda5 models tested with standard side-impact air bags (SABs). U.S. Government star ratings are part of the National Highway Traffic Safety Administration's (NHTSA's) New Car Assessment Program ([www.safercar.gov](http://www.safercar.gov)). †Based on 2008 fuel consumption ratings published by Natural Resources Canada. Offers available from October 1, 2008 until October 31, 2008. Lease and Finance on approved credit for qualified customers only. Visit [mazda.ca](http://mazda.ca) or see your dealer for complete Mazda Driving Dividend details.

