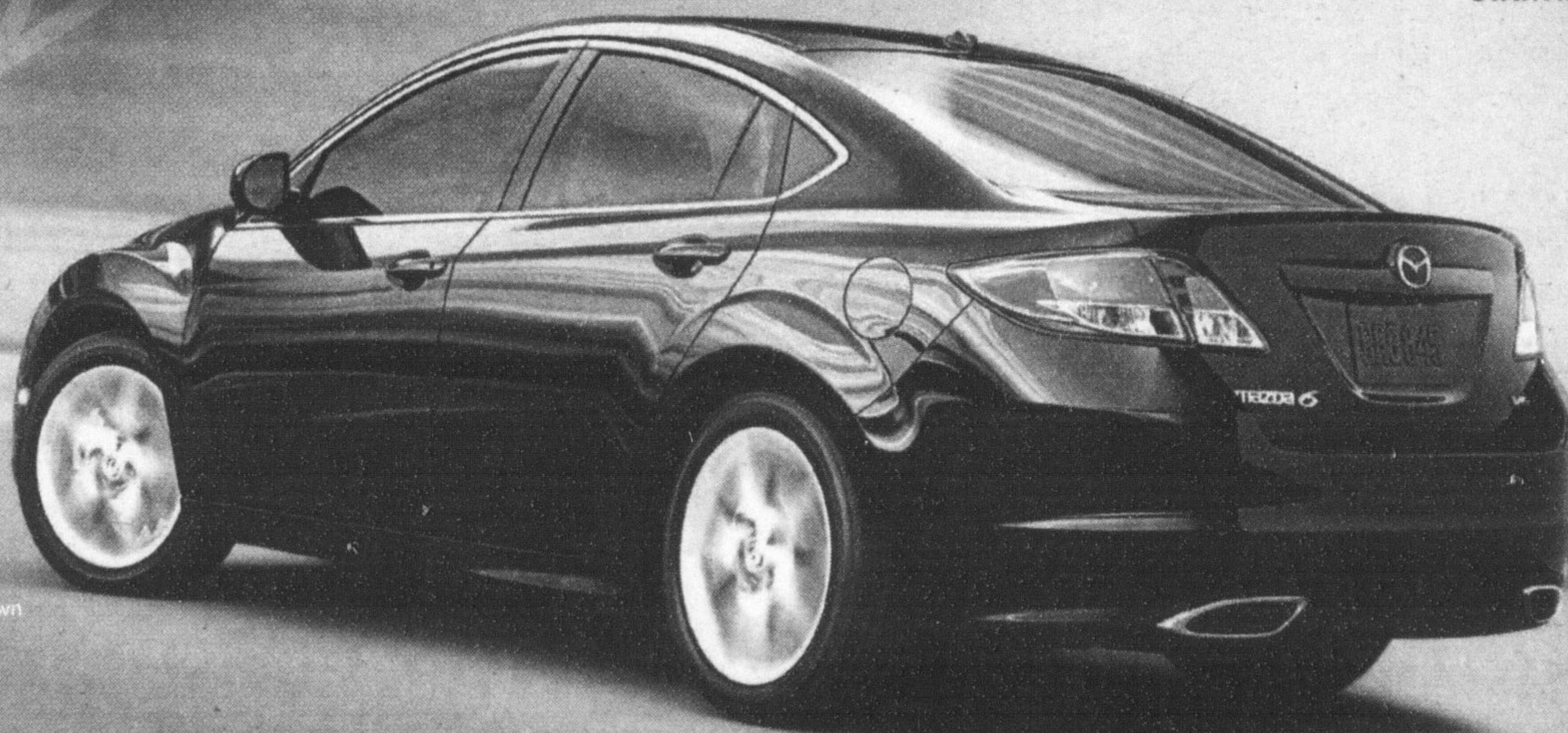




2009 Mazda LINE-UP
 NEW MODELS, NEW LOWER PRICES!

'09 Mazda6
 STARTING MSRP \$22,495*



GT-V6 model with Luxury Package shown

THE MAZDA DRIVING DIVIDEND

VALUE. EMOTION. ENGINEERING. We've re-priced 2009 Mazdas to be our lowest starting MSRPs of the 21st century! Which means you can get the Mazda you've always dreamed of. The same Mazda that will give you the performance and handling that get your heart racing. And cutting-edge safety that gives you peace of mind. The Mazda Driving Dividend. Zoom-Zoom. Forever. mazda.ca



GT-V6 model shown

★★★★★
 HIGHEST GOVERNMENT CRASH TEST RATING*

'09 Mazda Tribute GX-I4
 MSRP \$22,550* DOWN FROM \$23,450**

LEASE FROM **\$298**^{††} AT **6.9%** \$0 SECURITY DEPOSIT
 LEASE PAYMENT INCLUDES FREIGHT AND P.D.E.
 PER MONTH FOR 48 MONTHS WITH \$5,095 DOWN PAYMENT LEASE APR

• All-new spirited, yet fuel-efficient 171-hp, 2.5 L, DOHC, 16-valve engine • Standard Traction Control System (TCS) and Roll-Over Stability Control (RSC) • Standard Dynamic Stability Control (DSC) and Anti-lock Brake System (ABS) • Standard remote keyless entry, air conditioning and heated door mirrors



GT model shown

★★★★★
 HIGHEST GOVERNMENT CRASH TEST RATING*

'09 Mazda CX-7 GS
 MSRP \$29,995* DOWN FROM \$32,095**

LEASE FROM **\$358**^{††} AT **6.9%** \$0 SECURITY DEPOSIT
 LEASE PAYMENT INCLUDES FREIGHT AND P.D.E.
 PER MONTH FOR 48 MONTHS WITH \$5,100 DOWN PAYMENT LEASE APR

• 244-hp DISI (Direct Injection Spark Ignition) turbo engine • Runs on regular fuel • Standard 8-way, power-adjustable driver's seat • Standard 18" alloy wheels



GT model shown

★★★★★
 HIGHEST GOVERNMENT CRASH TEST RATING*

'09 Mazda CX-9 GS
 MSRP \$36,795* DOWN FROM \$39,995**

LEASE FROM **\$498**^{††} AT **6.9%** \$0 SECURITY DEPOSIT
 LEASE PAYMENT INCLUDES FREIGHT AND P.D.E.
 PER MONTH FOR 48 MONTHS WITH \$5,800 DOWN PAYMENT LEASE APR

• Three-row seating for seven • Standard Dynamic Stability Control (DSC), Traction Control System (TCS) and Roll-Over Stability Control (RSC) • Powerful 273-hp, 3.7 L, DOHC, 24-valve, V6 engine • Standard front and rear air conditioning with three-zone climate control

EXPERIENCE EMOTION IN MOTION AT YOUR LOCAL MAZDA DEALER.

TO LOCATE A DEALER NEAR YOU, VISIT WWW.MAZDA.CA OR CALL 1-800-263-4680.

READY TO ROLL OUR PRE-DELIVERY COMMITMENT MEANS EVERY NEW MAZDA IS CHECKED OUT, GASSED UP AND FITTED WITH FLOOR MATS. • ASK ABOUT OUR OUTSTANDING COMPREHENSIVE AND POWERTRAIN WARRANTY COVERAGE. ASK ABOUT OUR SPECIAL OFFERS FOR EXISTING MAZDA CUSTOMERS. GRADUATES GET AN ADDITIONAL CASH AWARD OF UP TO \$750 TOWARDS A PURCHASE OR LEASE.

†Does not include MSRP adjustments based on Incentives and/or Stackable Cash. **MSRP for new 2009 Mazda6 GS-I4 (G4S69AA00)/2009 Mazda Tribute GX-I4 2WD (WSXD59AA00)/2009 Mazda CX-7 GS 2WD (PYSJ89AA00)/2009 Mazda CX-9 GS 2WD (QVSA89AA00) is \$22,495/\$22,550/\$29,995/\$36,795. As shown, MSRP for new 2009 Mazda6 GT-V6 with Luxury Package (G4TB9AA00)/2009 Mazda Tribute GT-V6 AWD (WITZ79AA00)/2009 Mazda CX-7 GT AWD (PKJ89AA00)/2009 Mazda CX-9 GT AWD (QXTA89AA00) is \$35,060/\$32,150/\$35,695/\$44,395. Excludes \$1,395 freight and P.D.E. For all 2009 Mazda models and \$1,535 for all 2009 Mazda Tribute, CX-7 and CX-9 models. PPSA registration fee of \$65 is extra. ††Offers available on retail leases of new 2009 Mazda Tribute GX-I4 2WD, 2009 Mazda CX-7 GS 2WD and 2009 Mazda CX-9 GS 2WD. Dealer participation may be necessary. Total lease obligation for new 2009 Mazda Tribute GX-I4 2WD (WSXD59AA00) is \$19,399, including down payment of \$5,095. Total lease obligation for new 2009 Mazda Tribute GT-V6 with Luxury Package (G4TB9AA00) is \$23,450, including down payment of \$5,100. Total lease obligation for new 2009 Mazda CX-7 GT AWD (PKJ89AA00) is \$23,450/\$32,095/\$39,995. Excludes \$1,535 freight and P.D.E. for all 2009 Mazda Tribute, CX-7 and CX-9 models. PPSA registration fee of \$46 for a 48-month term extra. 20,000 km per year mileage allowance applies; if exceeded, additional 12¢ per km applies. 25,000 km leases also available. • 2009 Mazda Tribute, CX-7 and CX-9 models tested with standard side-impact air bags (SABs). Government star ratings are part of the National Highway Traffic Safety Administration's (NHTSA's) New Car Assessment Program (www.safercar.gov). For Purchase/Finance/Lease - \$5 DMVIC transaction fee, licence, insurance, taxes and other dealer charges are extra. Dealer may sell/lease for less. Limited quantities available. Dealer order or trade may be necessary on certain vehicles. Offers available from September 3, 2008 until September 30, 2008. Lease and Finance on approved credit for qualified customers only. Visit mazda.ca or see your dealer for complete Mazda Driving Dividend details.

