

SPECIAL VALUES!



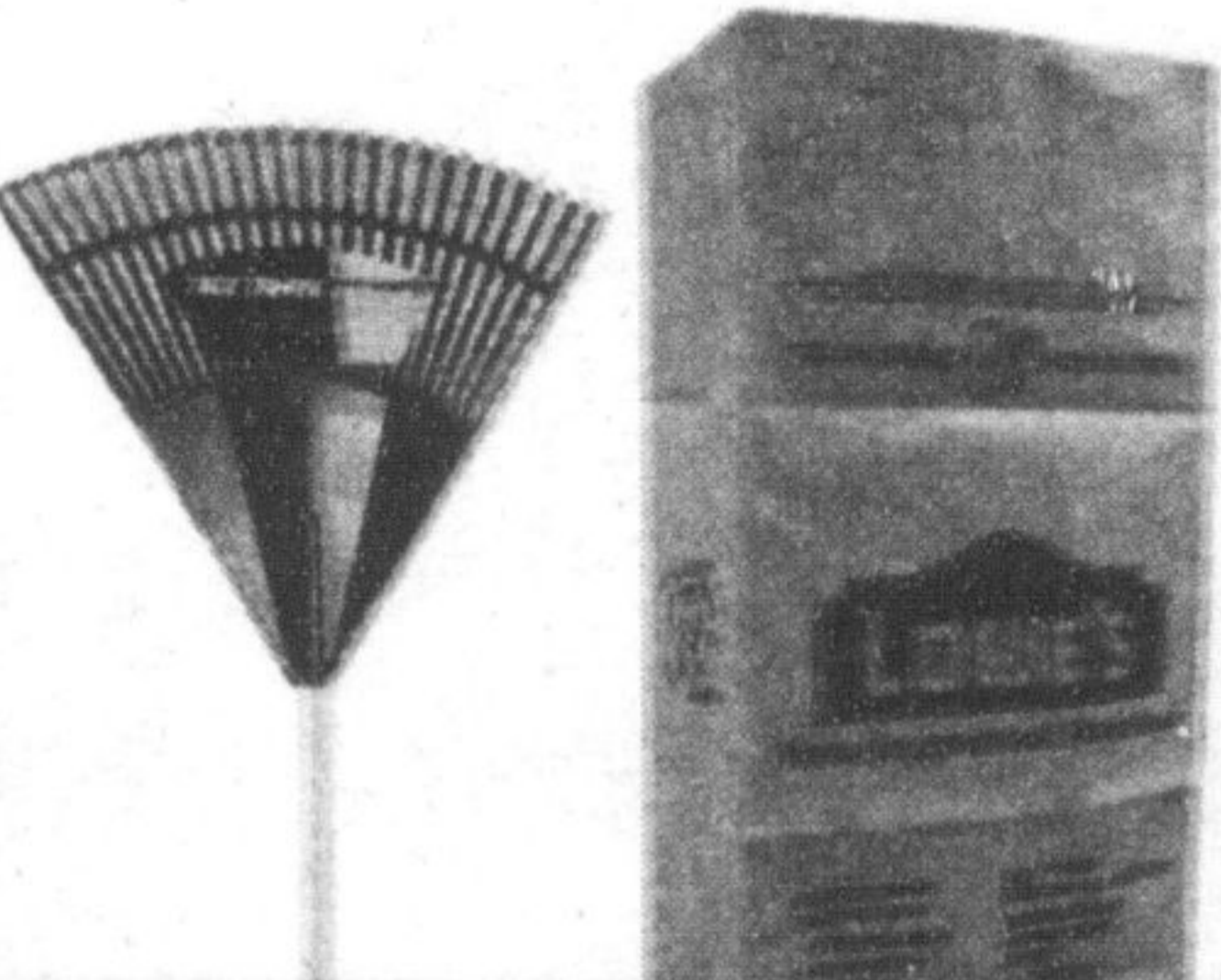
Women's shelter fundraiser coming up

Wed., Sept. 10TH through Sun., Sept. 14TH ONLY. While quantities last on all Special Values

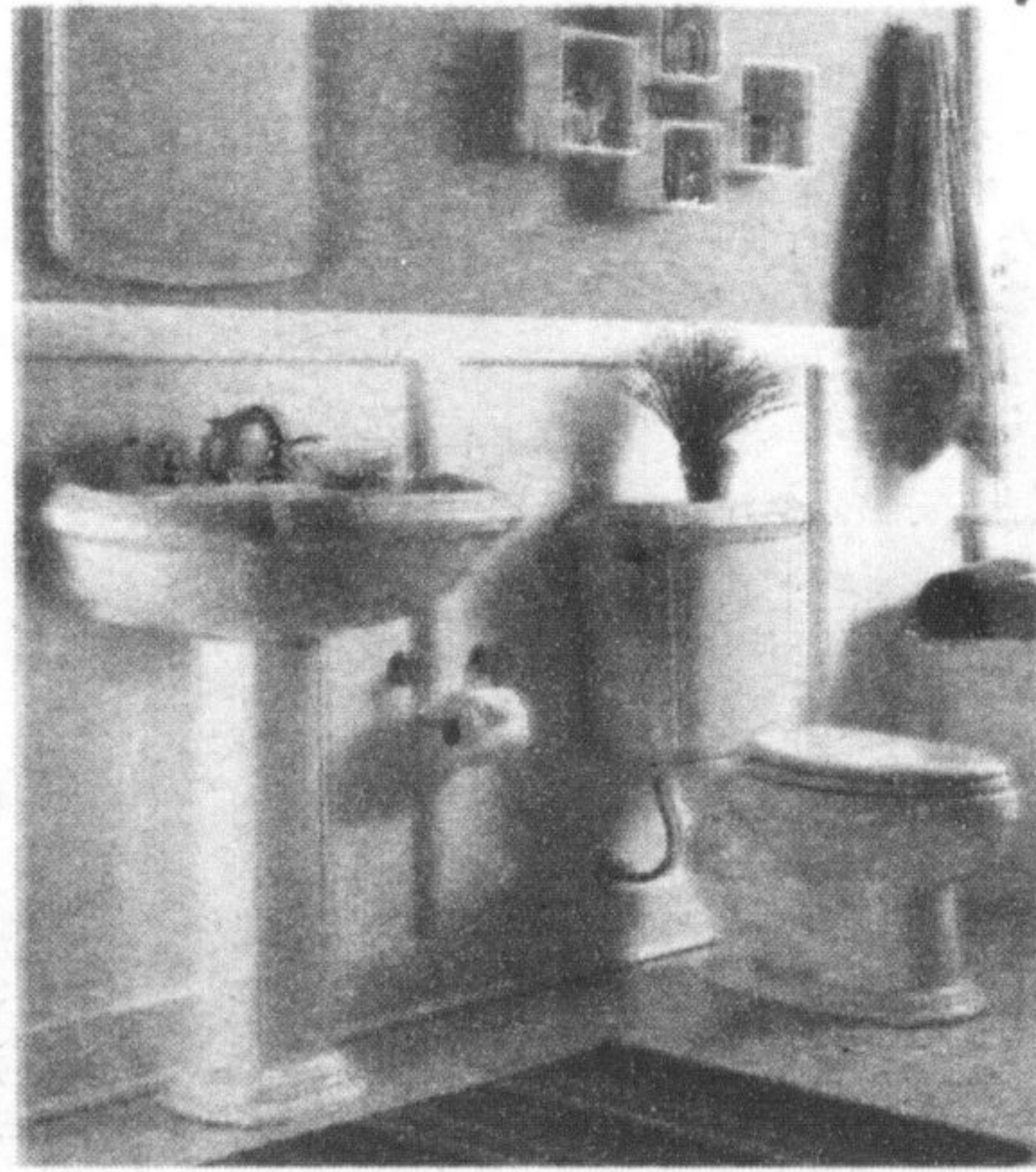
SPECIAL VALUE!

now **\$8⁸⁴**
was \$9.97
24" Poly Leaf Rake #228198

now **\$2⁴⁸**
was \$2.98
5-Pack Lawn and Leaf Yard Waste Bags #268313



CLEARANCE



American Standard

THE BOLD LOOK OF KOHLER.

50% off

SELECTED TOILETS & PEDESTALS

While quantities last. Details in-store. Faucets sold separately.

SPECIAL VALUE!



now **\$4⁴⁸**
was \$5.94
9" Pot Fall Mums #75256

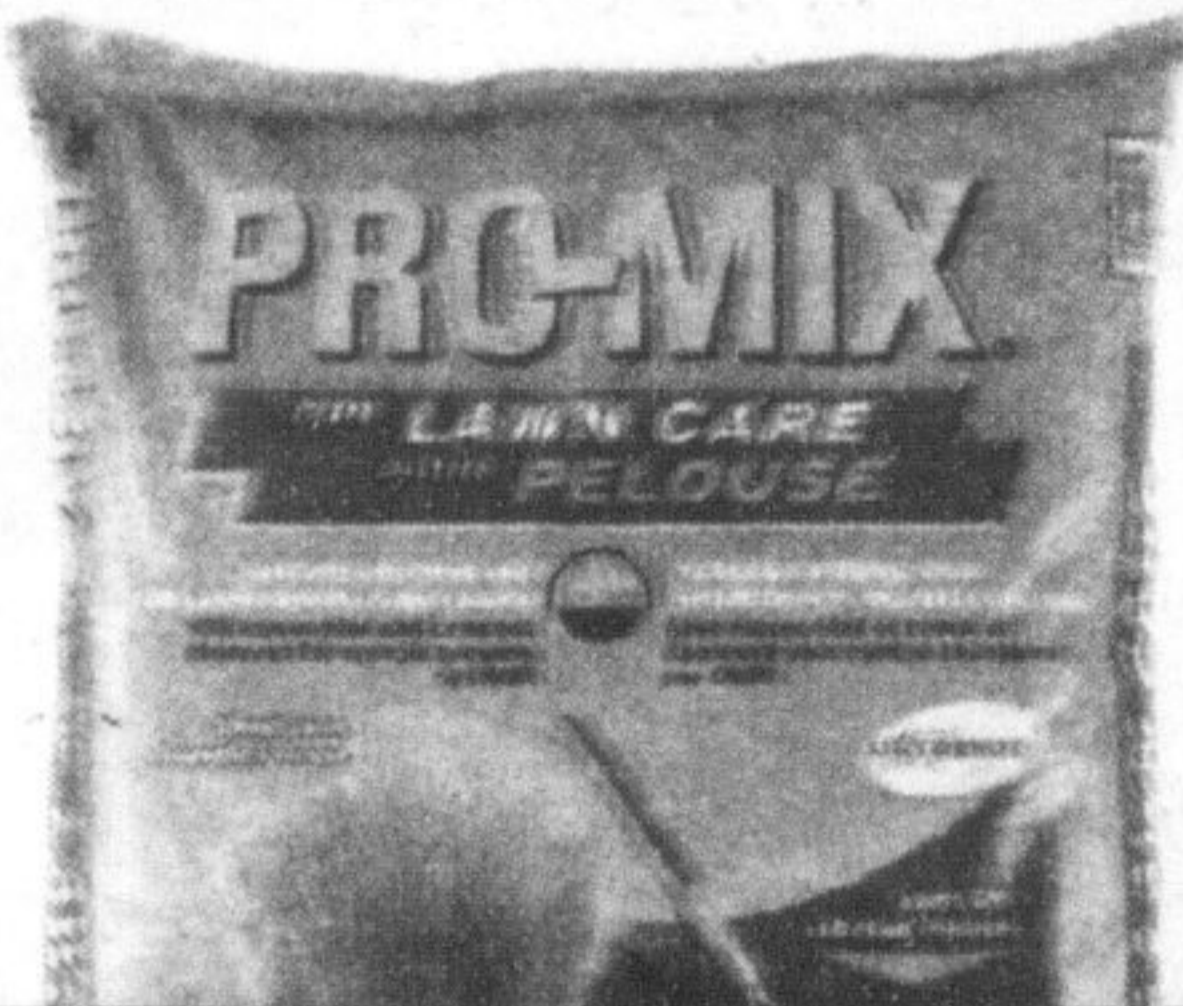
SPECIAL VALUE!



\$7 OFF

All 3.78 L Valspar Duramax and Ultra Premium Exterior Latex Paints and Primers

Discount taken at register. Details in-store.



now **\$2⁷⁸** each
was \$6.97
28 L Premier PRO-MIX Lawn Care •Specially formulated to grow grass seedlings by stimulating root systems #267010
28 L PRO-MIX Ultimate Organic Mix #267011
28 L PRO-MIX Container Mix #267017

SPECIAL VALUE!



now **\$33**
was \$38.98
7.5-Amp Electric Blower •160 MPH / 240 CFM •4-1/2 lbs. •2-year warranty •Lightweight #108089



now **\$25⁹⁸** each was \$32.47
12' ChoiceDek Composite Decking Woodtone #179330 Redwood #100614

now **\$35⁹⁸** each was \$44.97
16' ChoiceDek Composite Decking Woodtone #179332 Redwood #100615

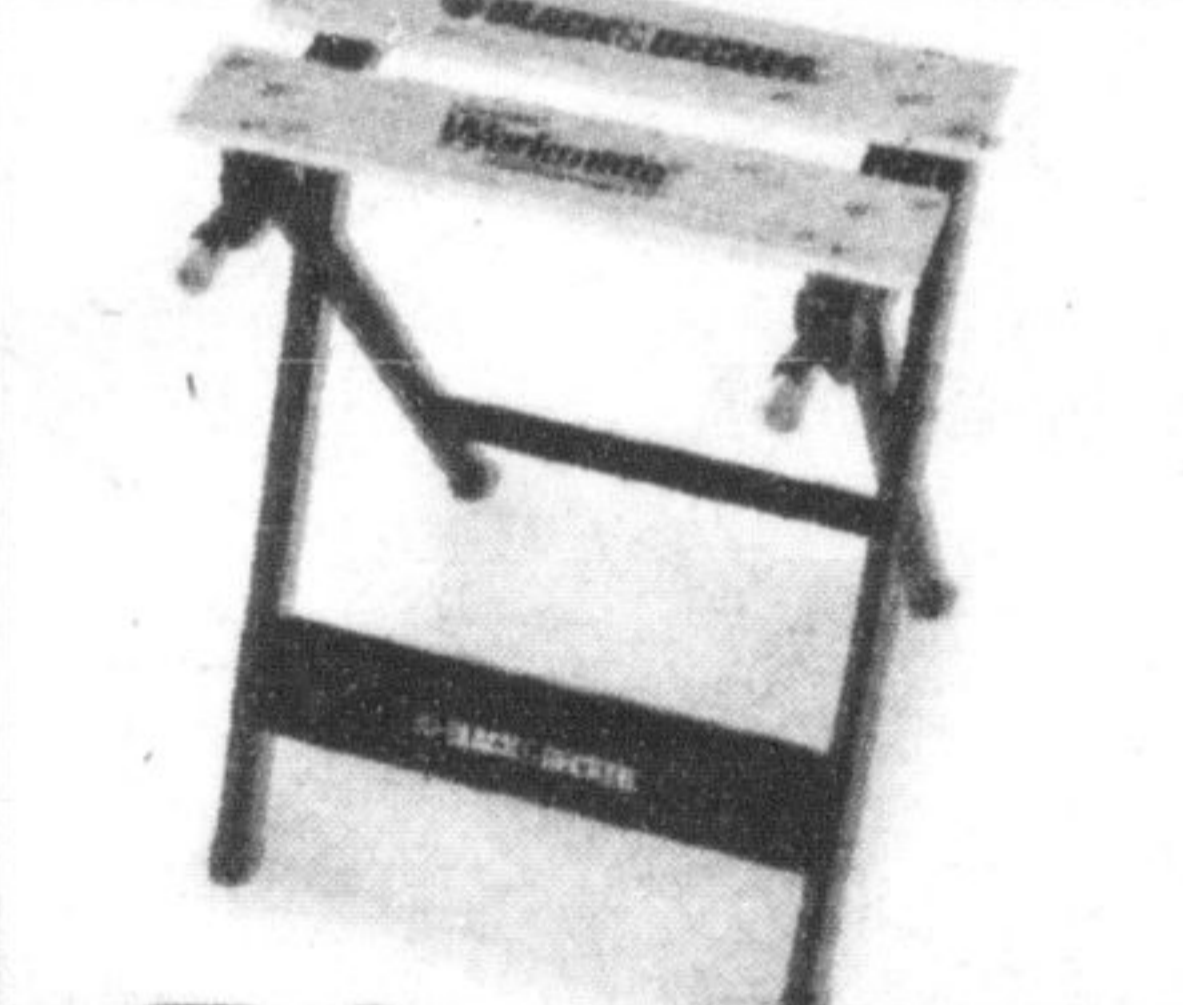
SPECIAL VALUE!



\$7 OFF

All 3.78 L Olympic Premium Exterior Latex Paints and Primers

Discount taken at register. Details in-store.



SPECIAL VALUE!

BLACK & DECKER.

now **\$19⁹⁸**
was \$39.98
Black & Decker® WorkMate •350 lb. weight capacity •Quality steel tube construction #176390

SPECIAL VALUE!



REMINGTON

now **\$58**
was \$68.98
14" 8-Amp Electric Chain Saw •Low kick-back bar and chain •Manual chain oiler •Fully-assembled #119917



SPECIAL VALUE!

now **\$48⁹⁸**
was \$58.98
3-HP (Peak), 22.7 L Wet/Dry Vac #215727

SPECIAL VALUE!

now **\$17⁹⁸**
was \$39.99
SwiftStick Bagless Stick Vacuum •Converts to handheld #288050
While quantities last.

SPECIAL VALUE!



now **\$12³⁷**
was \$17.37
Drive-Seal 200 Filler & Sealer •18.9 L pail covers 350 sq. ft. •2-year warranty #223511

Visit these locations

BRANTFORD
215 Henry St.
(at Wayne Gretzky Pkwy.)
519-720-2060

EAST GWILLIMBURY (NEWMARKET)
18401 Yonge St.
(N. of Green Lane)
905-952-2950

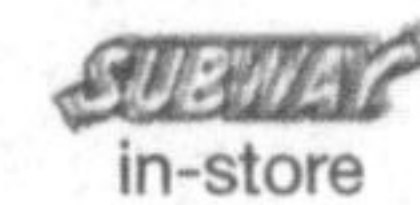
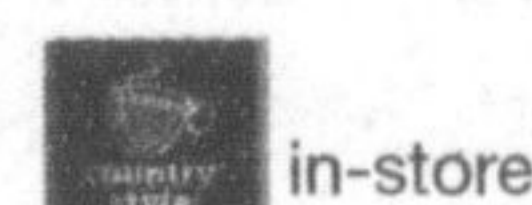
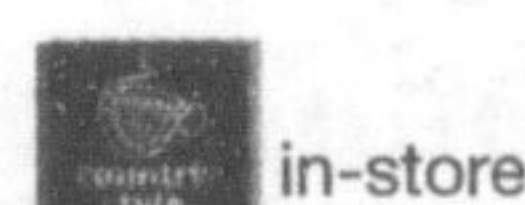
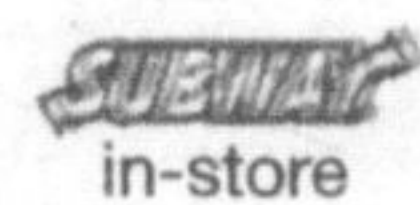
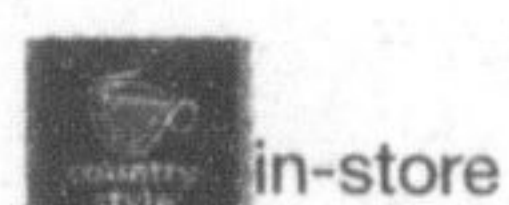
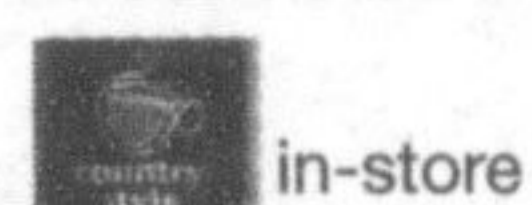
HAMILTON
1945 Barton St. E.
(at Woodward Ave.)
905-312-5670

MAPLE
200 McNaughton Rd.
(at Major Mackenzie Dr.)
905-879-2450

NORTH BRAMPTON
10111 Heart Lake Rd.
(at Bovaird Dr. East and Hwy. 410)
905-843-4300

SOUTH BRAMPTON
370 Kennedy Rd. S.
(at Steeles Ave. E.)
905-874-5000

TORONTO
1300 Castlefield Ave.
(at Caledonia Rd.)
416-780-2770



STORE HOURS: Monday – Saturday 7:00 a.m.–10:00 p.m., Sunday 8:00 a.m.–8:00 p.m. • For more information, visit Lowes.ca

MORE THAN HOME IMPROVEMENT. SERVICE IMPROVEMENT

Prices effective through Sunday, September 14, 2008. See store for details regarding product warranties. We reserve the right to limit quantities. Lowe's is committed to accurate pricing and reserves the right to correct errors. Correction notices for errors in the advertisement will be posted in our stores. We guarantee our everyday competitive prices. If you find a lower everyday or advertised price on an identical stock item at any local retail competitor that has the item in stock, we'll beat their price by 10% when you buy from us. Just bring us the competitor's current ad or other confirmation of the price that you have found. Lowe's reserves the right to verify the lower price prior to sale. Cash/charge card and carry purchases only. Competitor's closeout, special

order, discontinued, clearance, liquidation and damaged items are excluded from this offer. On percent off sales, we will match the competitor's percent off offer. Limited to reasonable quantities for homeowner and one-house order quantities for cash and carry contractors. Current in-store price, if lower, overrides Lowe's advertised price. Price guarantee honoured at all Lowe's retail locations. Labour charges for product installation are excluded from our price guarantee offer in our stores with an Installed Sales Program. Visit store for complete details. All installation services are guaranteed by Lowe's warranty. See Installed Sales contract for details. ©2008 by Lowe's®. All rights reserved. Lowe's and the gable design are registered trademarks of LF, LLC.

Walk a mile or two for abused women — and their children — Sunday, Sept. 28.

Together, Ramsden Training and Halton Women's Place will host the fifth annual riverside walk at Lions Valley Park, along the Sixteen Mile Creek, in Oakville.

It'll be an opportunity to help raise much-needed funds and awareness for Halton Women's Place, the only women's shelter in Halton.

Those interested in participating can download pledge sheets from www.haltonwomensplace.com.

Registration begins at 9 a.m. and the walk begins at 10 a.m.

This year will once again include the 5-km rugged terrain walk and the 2-km family fun walk.

Due to the bridge construction on Dundas Street, parking will be available at the St. Volodymyr Cultural Centre, just south of Dundas on Fourth Line.

For further information, contact Christina Mackay by calling (905) 332-1200, ext. 244, or sending an e-mail to cmackay@haltonwomensplace.com.

Golf tourney to aid Habitat for Humanity

Golfers will tee off for good cause at the Re/Max Aboutowne golf tournament Saturday, Sept. 16.

In support of Halton's Habitat for Humanity — specifically to sponsor a new home for an Oakville family — the event will take place at Oakville's Royal Ontario Golf Club, with an 8 a.m. shotgun start.

The cost is \$149 per player, which includes a round of golf, cart, range balls, marche-style luncheon and the chance to win prizes.

There's also the option to just enjoy the marche-style luncheon for \$45. The luncheon begins at 2 p.m.

For tickets, contact Megan Doherty at (905) 842-7000.

Girl Guides registration

Girls looking for a chance to try new things, make new friends and have lots of fun are invited to give Guiding a try with Girl Guides of Canada.

Guiding, the largest movement of girls and women in the world, is holding registration throughout September for girls aged five to 18.

For more information or to join, call 1-800-565-8111 or visit www.guides-ontario.org.