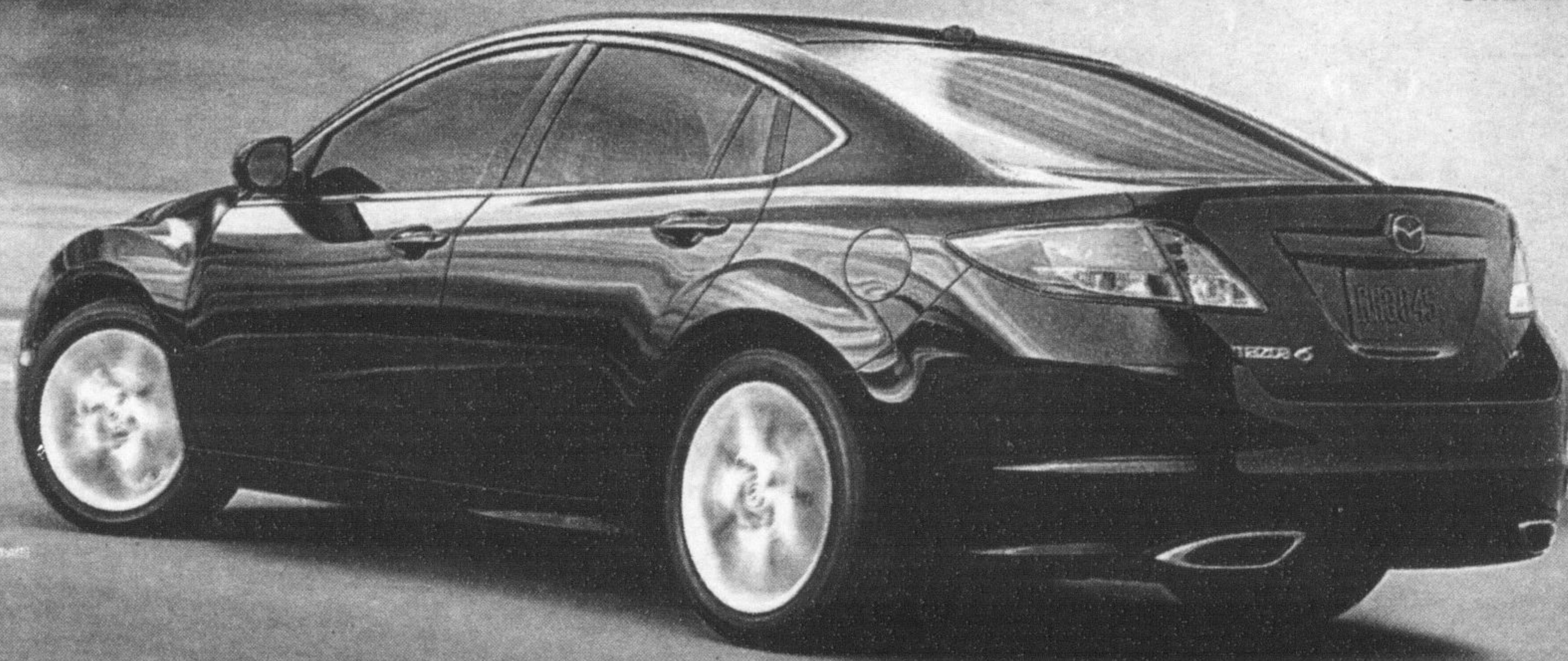




OUR LOWEST PRICES OF THE CENTURY.

'09 Mazda6
STARTING MSRP \$22,495*



GT-V6 model with luxury Package shown

THE MAZDA DRIVING DIVIDEND

VALUE. EMOTION. ENGINEERING. We've re-priced 2009 Mazdas to be our lowest starting MSRPs of the 21st century! Which means you can get the Mazda you've always dreamed of. The same Mazda that will give you the performance and handling that get your heart racing. And cutting-edge safety that gives you peace of mind. The Mazda Driving Dividend. Zoom-Zoom. Forever. mazda.ca



GT model shown

'09 MAZDA 3 GX
MSRP \$14,895* DOWN FROM \$16,895**

LEASE FROM **\$188** ^{††} AT **6.9%** ^{‡‡} LEASE APR
\$0 SECURITY DEPOSIT
LEASE PAYMENT INCLUDES FREIGHT AND P.D.E.
PER MONTH FOR 48 MONTHS WITH \$2,475 DOWN PAYMENT

• Fuel-efficient, 148-hp, 2.0 L engine • Standard front, side and side curtain airbags • Standard 4-wheel disc brakes with Anti-lock Brake System (ABS) • Tilt and telescopic steering wheel



GT model shown

'09 MAZDA 3 SPORT GX
MSRP \$15,895* DOWN FROM \$17,895**

LEASE FROM **\$198** ^{††} AT **6.9%** ^{‡‡} LEASE APR
\$0 SECURITY DEPOSIT
LEASE PAYMENT INCLUDES FREIGHT AND P.D.E.
PER MONTH FOR 48 MONTHS WITH \$2,475 DOWN PAYMENT

• Fuel-efficient, 148-hp, 2.0 L engine • Standard front, side and side curtain airbags • Standard 4-wheel disc brakes with Anti-lock Brake System (ABS) • Hatchback for more cargo versatility



GT model shown

'09 MAZDA 5 GS
MSRP \$19,995* DOWN FROM \$20,795**

LEASE FROM **\$238** ^{††} AT **6.9%** ^{‡‡} LEASE APR
\$0 SECURITY DEPOSIT
LEASE PAYMENT INCLUDES FREIGHT AND P.D.E.
PER MONTH FOR 48 MONTHS WITH \$3,350 DOWN PAYMENT

• Canada's Most Fuel-Efficient Vehicle in its Class* • Three-row seating for six • Dual sliding doors • Standard front, side and side curtain airbags

EXPERIENCE *EMOTION IN MOTION* AT YOUR LOCAL MAZDA DEALER.
TO LOCATE A DEALER NEAR YOU, VISIT WWW.MAZDA.CA OR CALL 1-800-263-4680.

READY TO ROLL OUR PRE-DELIVERY COMMITMENT MEANS EVERY NEW MAZDA IS CHECKED OUT, GASSED UP AND FITTED WITH FLOOR MATS. • ASK ABOUT OUR OUTSTANDING COMPREHENSIVE AND POWERTRAIN WARRANTY COVERAGE. ASK ABOUT OUR SPECIAL OFFERS FOR EXISTING MAZDA CUSTOMERS. GRADUATES GET AN ADDITIONAL CASH AWARD OF UP TO \$750 TOWARDS A PURCHASE OR LEASE.

†Available on select model lines only. Based on Mazda MSRP pricing since January 1, 2000. Does not include MSRP adjustments based on incentives and/or Stackable Cash. **MSRP for new 2009 Mazda6 GS-14 (G4S169AA00)/2009 Mazda3 GX (D4XS9AA00)/2009 Mazda3 Sport GX (D5XS9AA00)/2009 Mazda5 GS (E6SD59AA00) is \$22,495/\$14,895/\$15,895/\$19,995. As shown, MSRP for new 2009 Mazda6 GT-V6 with Luxury Package (G4TB89AB00)/2009 Mazda3 GT (D4TD59AA00)/2009 Mazda3 Sport GT (D5TD59AA00)/2009 Mazda5 GT (E6TD59AA00) is \$35,060/\$20,945/\$21,495/\$23,295. **MSRP for new 2008.5 Mazda3 GX (D4XS88AA05)/2008.5 Mazda3 Sport GX (D5XS88AA05)/2008 Mazda5 GS (E6SD58AA00) is \$16,895/\$17,895/\$20,795. ††Offers available on retail leases of new 2009 Mazda3 GX, 2009 Mazda3 Sport GX, 2009 Mazda5 GS. Dealer participation may be necessary. Total lease obligation for new 2009 Mazda3 GX (D4XS9AA00) is \$11,499, including down payment of \$2,475. Total lease obligation for new 2009 Mazda3 Sport GX (D5XS9AA00) is \$11,979, including down payment of \$2,475. Total lease obligation for new 2009 Mazda5 GS (E6SD59AA00) is \$14,774, including down payment of \$3,350. For other models see your dealer for details. Lease payment includes freight and P.D.E. of \$1,395 for all 2009 Mazda3/2009 Mazda6 models and \$1,535 for all 2009 Mazda5 Sport GX (D5XS9AA00) is \$11,979, including down payment of \$2,475. Total lease obligation for new 2009 Mazda3 GX (D4XS9AA00) is \$11,499, including down payment of \$2,475. Total lease obligation for new 2009 Mazda3 Sport GX (D5XS9AA00) is \$11,979, including down payment of \$2,475. Total lease obligation for new 2009 Mazda5 GS (E6SD59AA00) is \$14,774, including down payment of \$3,350. For other models see your dealer for details. Lease payment includes freight and P.D.E. of \$1,395 for all 2009 Mazda3/2009 Mazda6 models and \$1,535 for all 2009 Mazda5 models. PPSA registration fee of \$65 for a 48-month term extra. 20,000 km per year mileage allowance applies; if exceeded, additional 12¢ per km applies. 25,000 km leases also available. For Purchase/Finance/Lease - \$1,395 freight and P.D.E. for all 2008, 2008.5 and 2009 Mazda3/2009 Mazda6 models and \$1,535 for all 2008 and 2009 Mazda5 models. \$65 PPSA, \$5 DMVIC transaction fee, licence, insurance, taxes and other dealer charges extra. Down payment may be required. Dealer may sell/lease for less. Dealer order or trade may be necessary on certain vehicles. Lease and Finance on approved credit for qualified customers only. Visit mazda.ca or see your dealer for complete Mazda Driving Dividend details. Licence, insurance, taxes and other dealer charges extra. Dealer may sell/lease for less. Limited quantities available. Dealer order or trade may be necessary on certain vehicles. Lease and Finance on approved credit for qualified customers only. Visit mazda.ca or see your dealer for complete Mazda Driving Dividend details. *Based on 2008 fuel consumption ratings published by Natural Resources Canada.

