



# Simply Halton

Your Halton  
Connection  
Sept. 2008

www.halton.ca

## Moving Forward on Sustainable Halton: Building complete and healthy communities



by Regional Chair Gary Carr

Halton Region is developing a plan for creating sustainable and healthy communities for generations to come. This growth management initiative is called **Sustainable Halton** and is Halton's response to the Provincial 'Places to Grow' Plan. The Ontario government's Growth Plan has assigned a population of 780,000 and 390,000 jobs to Halton Region by 2031. Halton Region is required to plan for this population and employment growth. Our efforts through Sustainable Halton will mean greater protection of farmland, better infrastructure, and more liveable communities.

From our work to date, we know that not all future population growth in Halton can be accommodated within our existing urban areas. New urban areas will have to be built in Halton to accommodate growth starting in the year 2021.

In June 2008, Halton Region released five Growth Concepts that show where future homes and jobs could be located. We are currently seeking your input on these concepts, which can be reviewed on our website at [www.halton.ca/sustainablehalton](http://www.halton.ca/sustainablehalton).

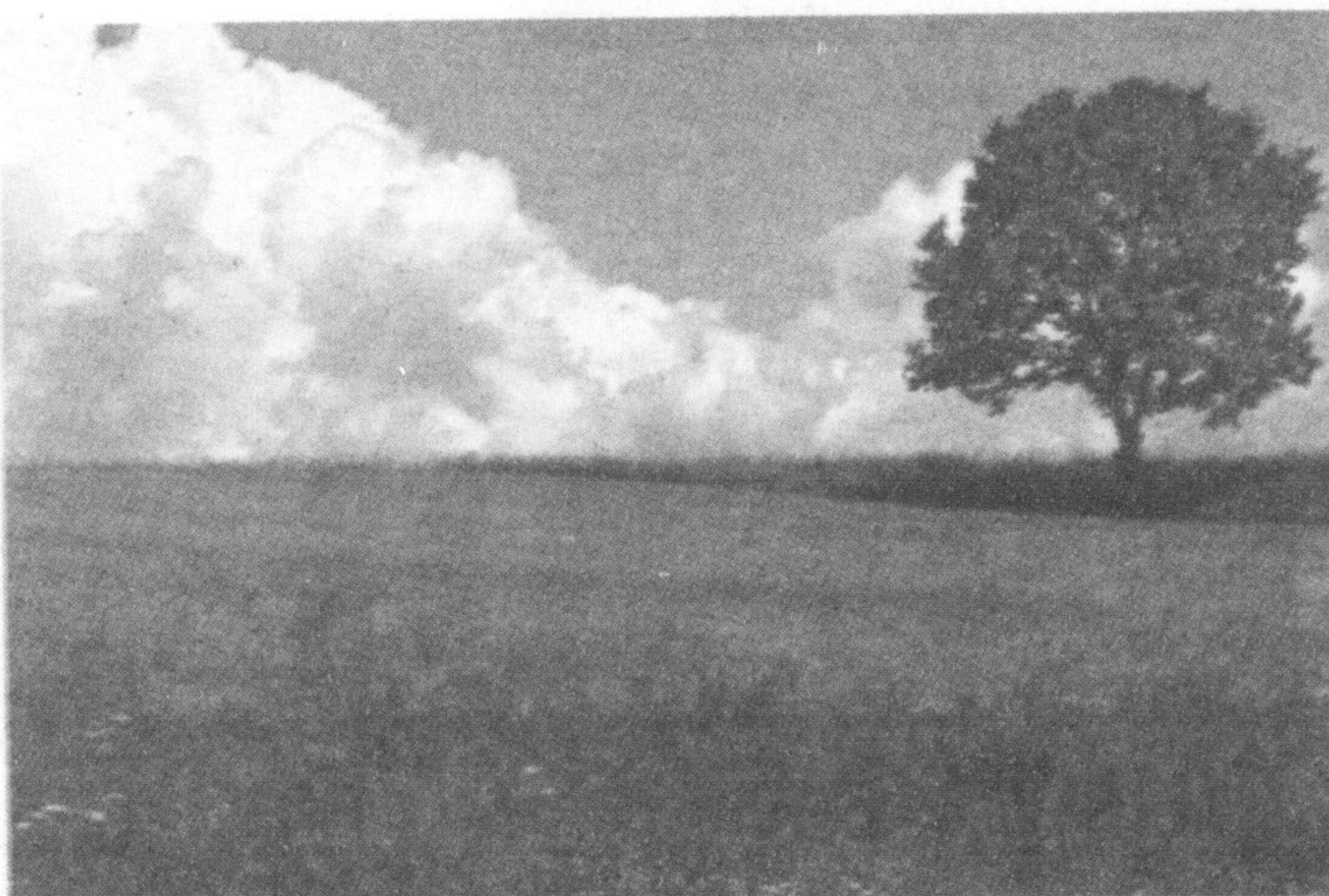
In September, we will be hosting four open houses to discuss the five Growth Concepts. At the open house, you will learn about how we are planning for sustainable and healthy communities and how we will meet the Province's population and employment growth forecasts for Halton Region.

We are interested in getting your feedback on what you feel are the strengths and weaknesses of each Growth Concept. We would like to know if you have any suggested changes for the Growth Concepts. We would also like to know if there is a growth concept that you prefer. Your comments are important as we move forward on Sustainable Halton and further refine the concepts in the next phase of work.

If you are unable to attend any of the open houses, you can provide your comments by visiting the Sustainable Halton website at [www.halton.ca/sustainablehalton](http://www.halton.ca/sustainablehalton) and completing an online workbook. Please either visit the website or attend an open house to let us know what you think. The deadline for providing comments is **September 30, 2008**.

I look forward to hearing from you.

Working together, we can plan a sustainable Halton that will serve the needs of Halton residents and businesses for generations to come.



### We need to hear from you...

Join us at one of our upcoming open houses to share your thoughts on how and where you want Halton to grow in the future. If you are unable to attend any of the open houses, you can provide your comments by visiting [www.halton.ca/sustainablehalton](http://www.halton.ca/sustainablehalton) and completing an online workbook. The deadline for providing comments is September 30, 2008.

#### Open Houses

**Burlington**  
Monday, September 8  
6:15 - 9:00 p.m.  
(presentation at 6:45)  
Appleby Ice Centre – Multi-Purpose Room  
1201 Appleby Line

**Milton**  
Tuesday, September 9  
6:15 - 9:00 p.m.  
(presentation at 6:45)  
Milton Sports Centre – Banquet Room  
605 Santa Maria Blvd.

**Oakville**  
Wednesday, September 10  
6:15 - 9:00 p.m.  
(presentation at 6:45)  
River Oaks Community Centre – Community Room A  
2400 Sixth Line

**Halton Hills**  
Tuesday, September 16  
6:15 - 9:00 p.m.  
(presentation at 6:45)  
Georgetown District High School – Cafeteria  
70 Guelph St.

## Growth Concepts: Common Themes

The five Growth Concepts released in June 2008, reflect Halton's planning vision and the priorities identified through previous consultation. A number of common themes are found in each Growth Concept. They are:

- A natural heritage system that includes features like woodlots, valleys, streams, creeks;
- New mixed-use\*/residential lands are located so that they are an extension of existing urban areas;
- Keeping farmland in the southern portion of Halton Hills to support established farming activities in the area;
- Keeping southwest Milton as rural to preserve connections with farmland in the Greenbelt and Niagara Escarpment area and to limit the potential for land use conflicts with the Halton Waste Management Facility and the CN rail corridor;
- The opportunity to locate mixed-use / residential development around a potential GO Transit station in east Milton (around Trafalgar Road and the rail line) in order to support and encourage transit use; and
- New employment lands are located along Highway 401 in both Milton and Halton Hills because this area has strong connections within Halton to existing employment lands, are a preferred trucking route with good highway access, and include strong connections to other existing employment areas outside of the Region.

\* mixed-use includes things like shopping and stores, hospitals, schools and community centres

Tell us your thoughts on Sustainable Halton by emailing us at [sustainable@halton.ca](mailto:sustainable@halton.ca) or calling our dedicated voicemail at 905-825-6000 ext.7455, toll free: 1-866-4HALTON (1-866-442-5866).

#### Meetings and Closures at Halton Region Headquarters

**September 1** Offices closed for Labour Day  
**Sept. 9, 9:30 a.m.** Health & Social Services Cte  
**Sept. 10, 9:30 a.m.** Planning & Public Works Cte  
**Sept. 10, 1:30 p.m.** Administration & Finance Cte  
**Sept. 17, 9:30 a.m.** Regional Council Meeting  
**Sept. 30, 9:30 a.m.** Health & Social Services Cte

This page has been donated by this newspaper to communicate important information to Halton residents at no cost to taxpayers.

We welcome your feedback. Contact Access Halton at [accesshalton@halton.ca](mailto:accesshalton@halton.ca)  
905-825-6000 • Toll free: 1-866-442-5866 • TTY: 905-827-9833 • [www.halton.ca](http://www.halton.ca)  
The Regional Municipality of Halton • 1151 Bronte Rd., Oakville, Ontario L6M 3L1