

# HOME, LAWN & GARDEN

OPEN MON 10-6 • TUES & WED 9-7 • THURS & FRI 9-9 • SAT 9-3

Gift Certificates Available for Any Occasion

**T.O.T.A.L**  
Skin & Body  
**SPA & SALON**  
-Full Service Spa-

*River Rock Massage*

SPA packages make wonderful gifts for showers and Weddings!

Your journey of relaxation and serenity begins with a private *Eucalyptus Steam Room* session to melt away your tension and warm your muscle tissue before experiencing this perfect treatment using polished *Basalt Lava Stones* that are slowly heated and incorporated in a *Full Body Massage*. This experience continues with a relaxing *Aromatherapy Scalp Massage* that leaves you feeling complete.

*A must try for everyone.*

\$125.00

(saving \$44.00)

Aesthetician Required

258 Main St. E., Downtown Milton — 905-878-9711  
 www.totalskinandbodyspa.com

## Evergreens for year-round greenery

(NC)- The beauty of evergreens lie in their name - they add year-round colour and life to gardens and yards. Narrow leaf evergreen shrubs, such as cedar and spruce are most commonly known, but this group also includes broadleaf evergreens including rhododendrons, camellias and laurels. Although these trees and shrubs are a low-maintenance addition to yards and gardens, they do require a little extra attention to keep them healthy throughout the winter.

As the temperatures begin to fall, continue to water evergreens as often as once a week, as long as the air temperature is above freezing. This is especially important for recently planted or transplanted trees and shrubs. Remember to stop watering once the temperature dips below freezing as ice formation can damage evergreens.

Fall is also good time to feed your large evergreens. Spruce, yew, hemlock and juniper need nutrients at their roots, making fertilizer spikes

such as Miracle-Gro Evergreen Fertilizer Spikes 12-10-10 a good choice. For broadleaf evergreens like rhododendrons, use something like Miracle-Gro Evergreen Tree and Shrub Food, which is specially formulated for these acid-loving shrubs.

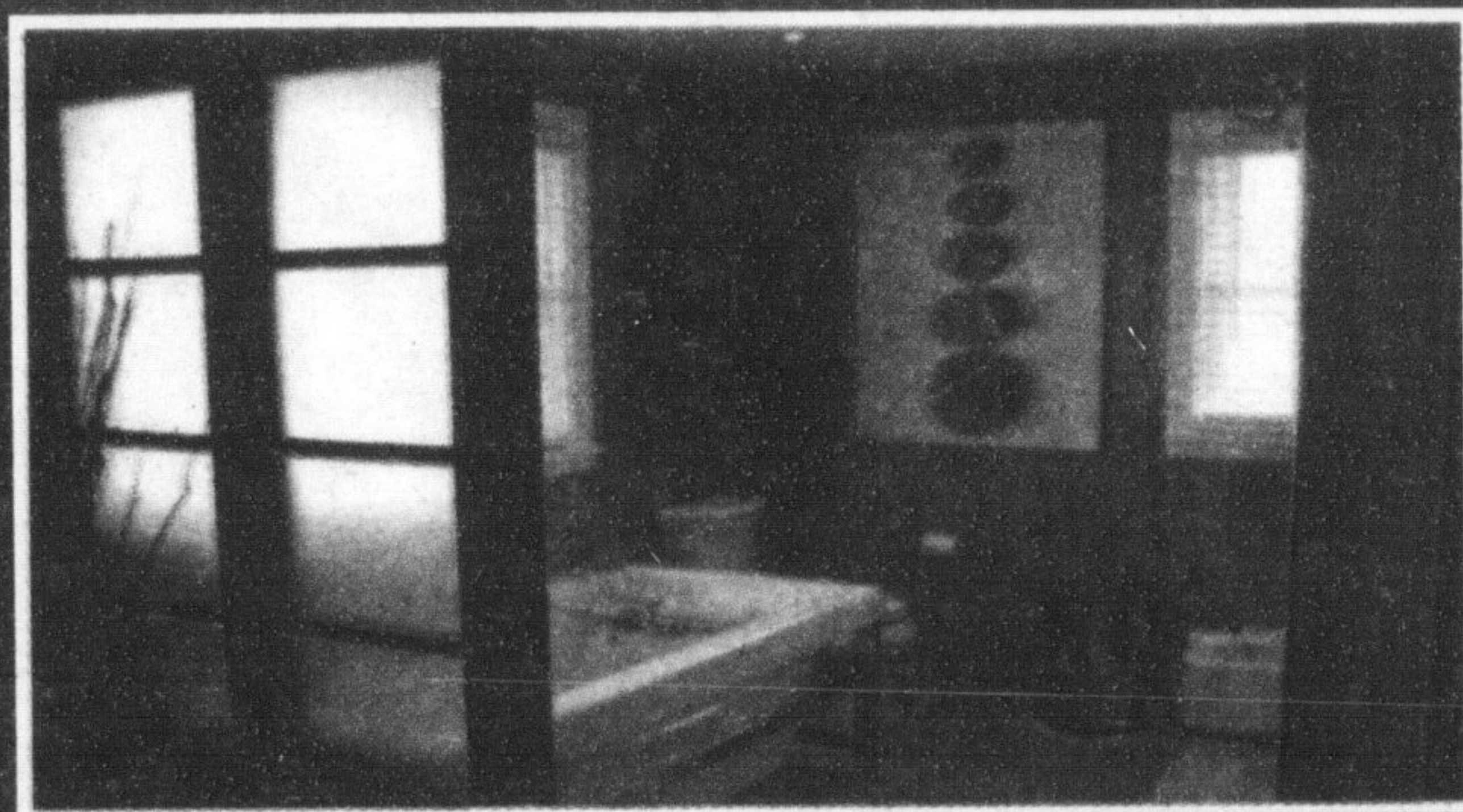


Evergreens are susceptible to moisture loss from the drying effects of winter winds. Protect them from wind damage by erecting a screen made of burlap, shade cloth or similar material stapled to wooden stakes. Sprays such as anti-desiccants or anti-transpirants can also help prevent winter moisture loss. These sprays, which can be used on both broad and narrow leaf evergreens, coat leaves with a clear film that does not interfere with plant growth, photosynthesis or other natural processes. These products are available at your local nursery or

garden centers and should be applied when the temperature is above freezing.

For information from a Scotts Garden Expert call 1-866-436-8477 or visit [www.Scotts.ca](http://www.Scotts.ca).

## BATHROOM RENOVATIONS?



### GIVE YOUR BATHROOM THE FACTORY TILE TOUCH

See our design team to transform your space

*We specialize in importing and supplying quality Granite, Caesarstone, Marble, Ceramics, Porcelain and Natural Stone*

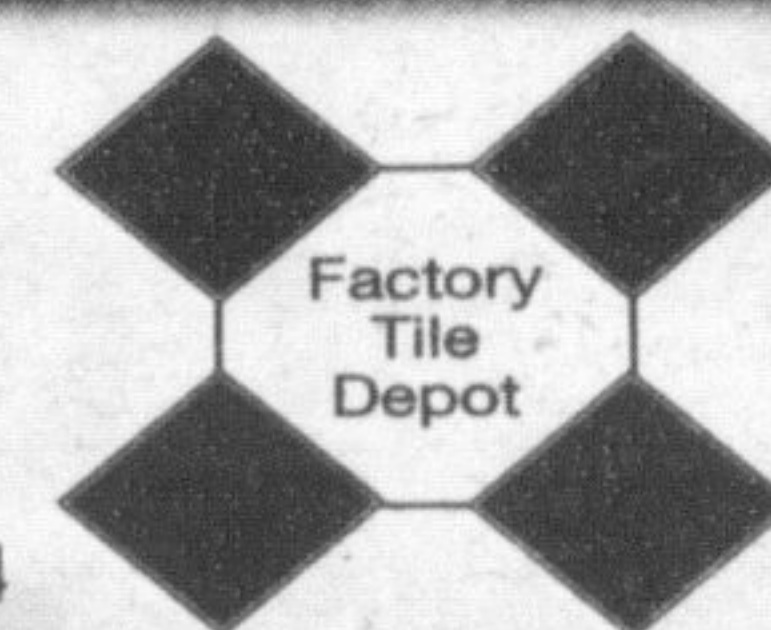
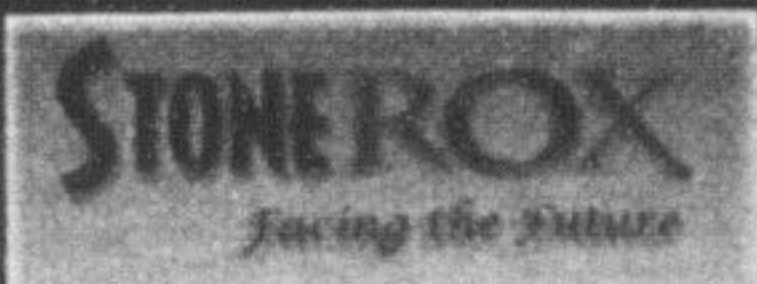
*Ask about our Custom Glass Shower Doors & Floor Heating*

*Tile selection made enjoyable!*

### FACTORY TILE DEPOT

1360 Speers Road, Oakville (East of third line)

905.465.1650 Mon.-Wed., 9:30-6, Thurs., 9:30-8, Fri. 9:30-5, Sat., 10-5, Sun., 11-4



[www.factorytiledepot.ca](http://www.factorytiledepot.ca)

We welcome American Express® Cards

