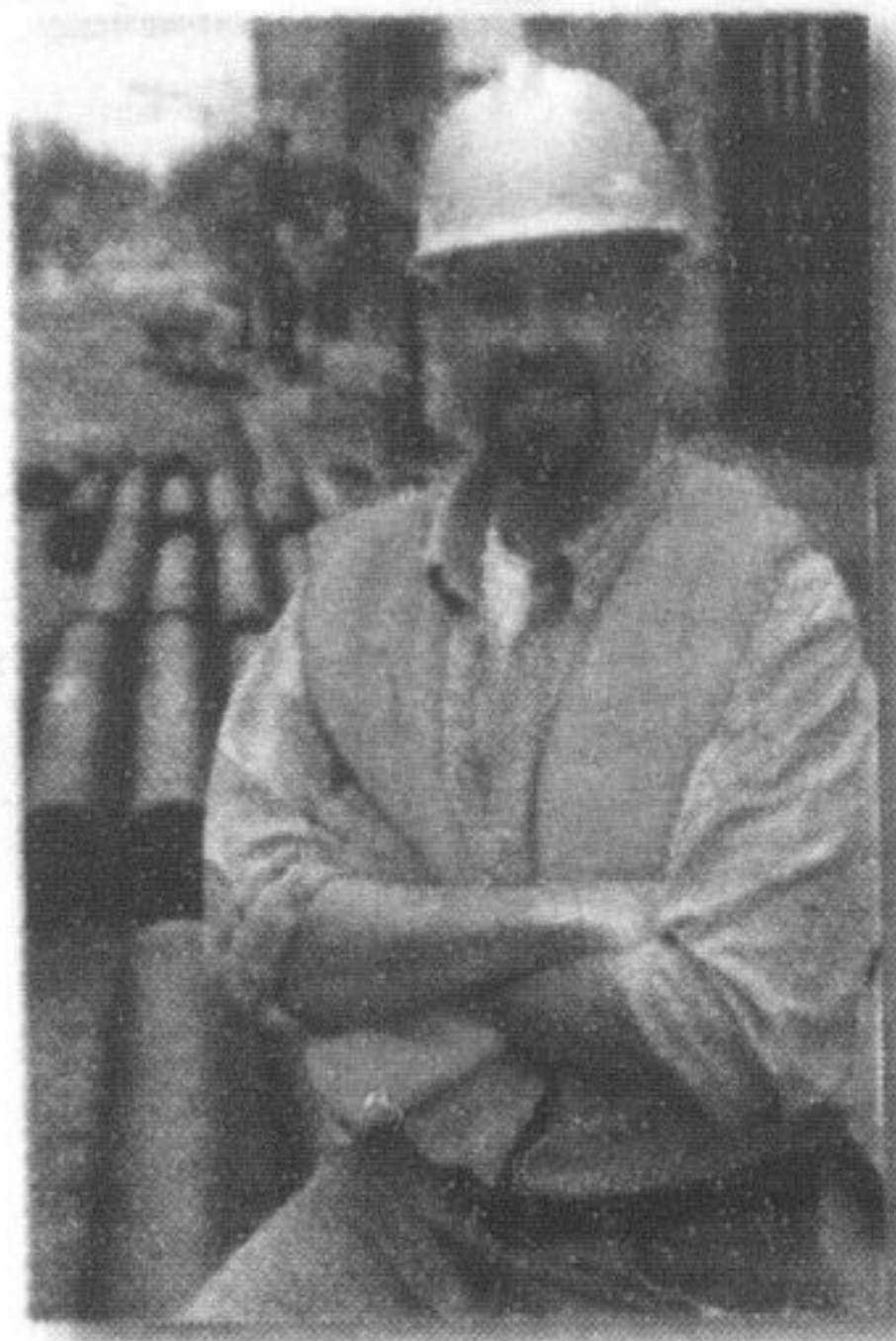


JOB & CAREER SEARCH



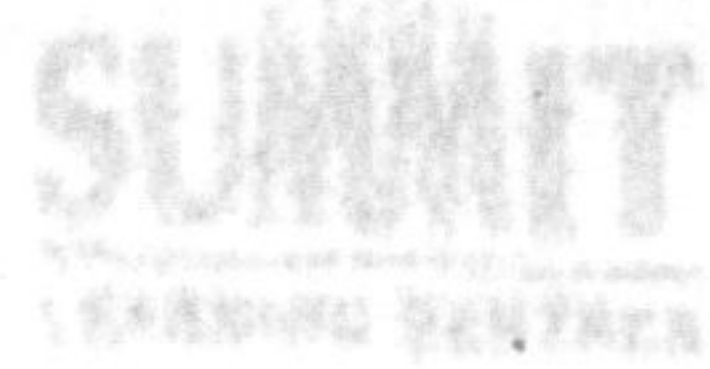
Employment Opportunities

Burlington Post

The Oakville Beaver

REVIEW

The Canadian Champion



www.summitlearning.ca

Growing Education Company seeks qualified

Teachers for our Milton (strong math skills) and Burlington locations

To join a winning team of professionals.

- Adult Students
- Reduced Class Size
- Attractive Wage
- Benefits Package

If you enjoy the challenges and rewards of teaching, apply today:

**Email: careers@summitlearning.ca
No Phone Calls Please**

Great Opportunities at a Great Firm

At Raymond James we believe in the power of independence. From our approach to financial planning and investing to the people we employ, our philosophy of freedom permeates our entire organization. Discover how this makes us unique and what it can mean for you.

We are pleased to be expanding our services in Milton. Begin your career with us by choosing your professional path:

- Investment Advisor/Financial Planner****
- Licensed Sales Associate****
- Part-Time Marketing Assistant**

**Ideal candidates will possess superior communication skills and have a minimum of 2 years experience with related industry courses.

If you would like to be considered for these positions please forward your resume to:

**diana.bristow@raymondjames.ca
or fax to (905) 864-4774**

Bristow Financial Group 174 Mill Street, Milton L9T 2R3
www.bristowfinancialgroup.com

RAYMOND JAMES

Individual solutions from independent advisors

Raymond James Ltd., member CIPF



Too much fun to call it a job!

TERRA Greenhouses is North America's most innovative retail garden centre. We have built our success with talented people and are always looking to expand the TERRA Team with the right players!

NOW HIRING
SEASONAL PART TIME
PERMANENT CAREER
ALL POSITIONS AVAILABLE

visit www.terragreenhouses.com
for more details

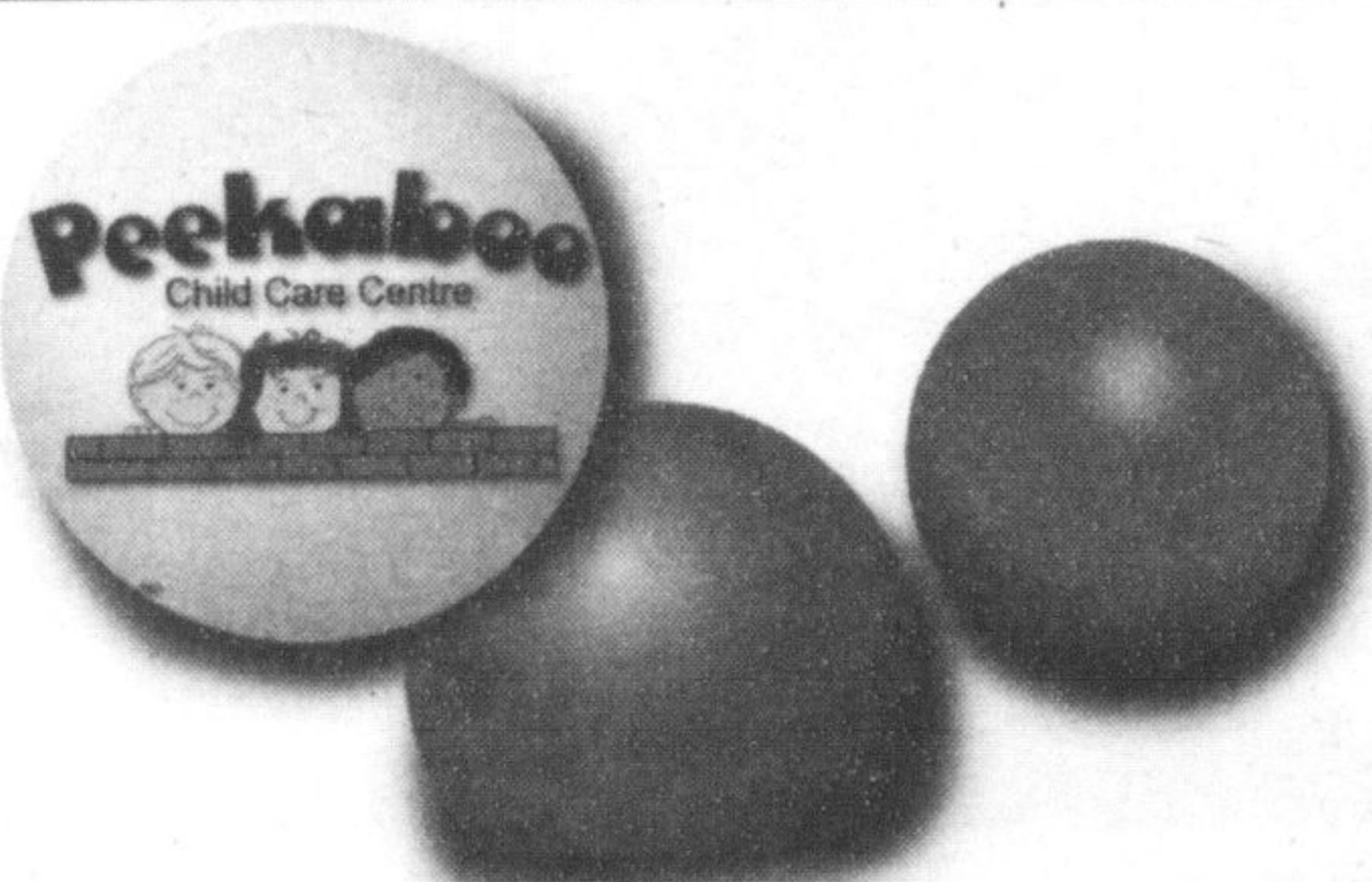
Email your resume (with position of interest & location) to:
HR@TerraGreenhouses.com or fax to 905-690-8410

There's a fit for you at TERRA!

If you'd like to work with us but don't see the job you're looking for, send your resume anyway. We're always growing & you might be the perfect fit for a future position.



Burlington • Waterdown • Milton • Vaughan



Peekaboo Child Care is a fast growing organization with plenty of opportunities for advancement!! We have well-equipped centres featuring all the greatest toys and individual classroom budgets!! We offer health and dental benefits, professional development opportunities and educational re-imbursment! We have created a great team environment through special events and staff recognition programs! Take a Peek at what you're missing, visit our website @ www.peekabookid.com!

EMPLOYMENT OPPORTUNITIES:

Various employment opportunities available including: ECE (must have valid Ontario ECE diploma or AECEO equivalent), ECA/Assistant, or Supply Staff, for ages Infant to Kindergarten, in multiple locations... Check our locations page at www.peekabookid.com
There's a Peekaboo close to you!

Please fax or e-mail your cover letter and resume to:

AMANDA TERRY

(fax) 905-451-8416

(e-mail) amanda@peekabookid.com

WAREHOUSE EMPLOYEES FULL TIME POSITIONS

Sigma-Aldrich is a leading Life Science and High Technology Company operating in 36 countries with 8,000 employees. Our biochemical and organic chemical products are used primarily by life science companies, university and government institutions, hospitals and in industry. Our Canadian Warehouse and Distribution Centre has immediate openings for full time warehouse employees.

As a Warehouse Associate on the 12:00 pm to 8:30 pm shift, you will join a fast paced, highly motivated team of about ten employees. You will be responsible for a number of warehouse functions including picking, packing, and shipping of orders in an SAP and ISO 9001 environment.

As the ideal candidate, you will have at least three years experience in a warehouse and distribution operation preferably in a chemical environment. Candidates should have working knowledge of WHMIS and current Health and Safety requirements. Certification in Transportation of Dangerous Goods along with SAP and superior computer skills will be definite assets.

These positions report to the Warehousing and Distribution Team Leaders and offer a competitive salary. Full time positions also include standard company benefits. Please reply in confidence to:

SIGMA-ALDRICH CANADA LTD.
2149 Winston Park Drive
Oakville, Ontario L6H 6J8

email: canadah@siat.com or fax: 905-829-9274

AUTOMOTIVE CONSULTANTS Wallace PONTIAC - Milton

Our market is growing at a rapid pace and as a result we need to fill two positions in the short term.

If you are self motivated and appreciate being rewarded for your hard work, then this could be the opportunity for you!

You will receive ongoing training and strong management support which will give you the necessary skills to be successful and earn a great income.

For more information about the retail car business; Call 905-878-2355 and ask for John Langevin

Or

Apply in confidence with resume to;
j.langevin@wallacepontiac.com