



The Regional Municipality of Halton  
www.halton.ca

**WE'RE MOVING FORWARD ON SUSTAINABLE HALTON  
PHASE II - GROWTH CONCEPTS**

Halton Region is developing a plan for building sustainable and healthy communities for generations to come. This growth management initiative is called **Sustainable Halton**. Halton Region's efforts will mean less sprawl, greater protection of farmland, better infrastructure, and more liveable communities.

In June of this year, Halton Region released five Growth Concepts that show where future homes and jobs could be located.

In September, the Region is hosting **four open houses** to discuss the five Growth Concepts. Come to an open house to learn about how the Region is planning for sustainable and healthy communities and how we will meet the Province's population and employment growth forecasts for Halton Region. We want to hear your views of the Growth Concepts. Your comments are important as we move forward on Sustainable Halton and further refine the concepts in the next phase of work.

If you are unable to attend, or want more information, please visit our website at [www.halton.ca/sustainablehalton](http://www.halton.ca/sustainablehalton). Follow the links to the online workbook and give us your thoughts.

**We look forward to hearing from you.**

**Sustainable Halton Meeting Schedule**

Date	Location	Venue	Time
Monday September 8	<b>Burlington</b>	Appleby Ice Centre Multi-Purpose Room 1201 Appleby Line	6:15 to 9:00 p.m. *presentation at 6:45
Tuesday September 9	<b>Milton</b>	Milton Sports Centre Banquet Room 605 Santa Maria Blvd	6:15 to 9:00 p.m. *presentation at 6:45
Wednesday September 10	<b>Oakville</b>	River Oaks Community Centre Community Room A 2400 Sixth Line	6:15 to 9:00 p.m. *presentation at 6:45
Tuesday September 16	<b>Halton Hills</b>	Georgetown District High School Cafeteria 70 Guelph Street Georgetown	6:15 to 9:00 p.m. *presentation at 6:45

For more information, please contact either:

Perry Vagnini, Acting Senior Policy Analyst at 905-825-6000 ext. 7987, toll-free at 1-866-442-5866, or by e-mail at [Perry.Vagnini@halton.ca](mailto:Perry.Vagnini@halton.ca)

**OR**

Alana Fulford, Intermediate Planner at 905-825-6000 ext. 7354, toll-free at 1-866-442-5866, or by e-mail at [Alana.Fulford@halton.ca](mailto:Alana.Fulford@halton.ca).

**Kids are back in School - Drive SAFE**

Labour Day weekend signals back to school for Halton students. The roads and neighbourhoods in our community will be busier with children walking, bicycling, or taking the bus to and from school.

We would like to remind all motorists that when driving your vehicle, be aware of the speed limit at all times, particularly in school zones. Remember when approaching a stopped school bus with its upper red lights flashing, vehicles travelling in both directions must stop.

Drive SAFE (Safety Awareness For Everyone) is a partnership between Halton Region and Halton Regional Police Service to promote road safety. To learn more about the Drive SAFE program visit our website, [www.halton.ca/drivesafe](http://www.halton.ca/drivesafe).

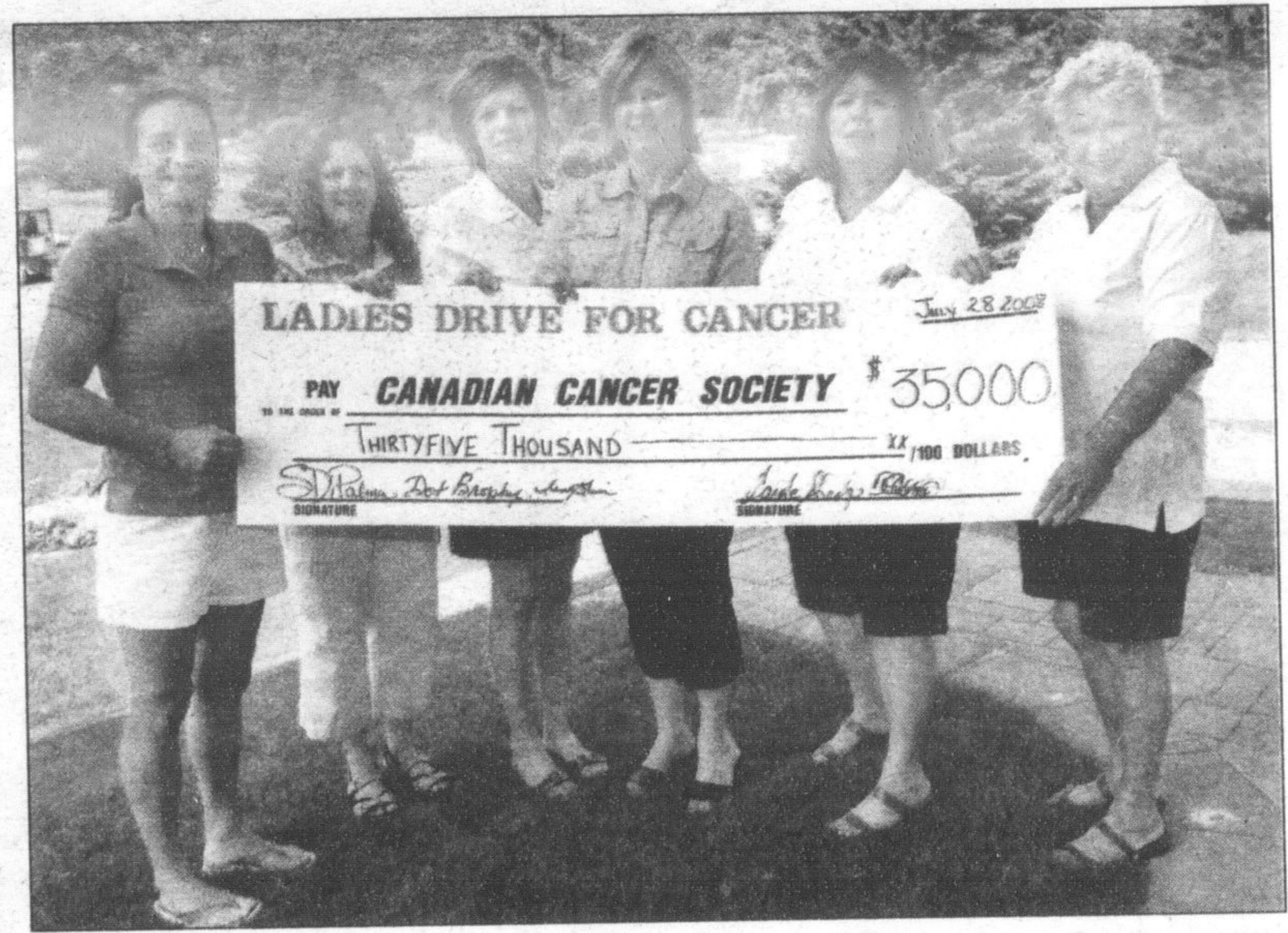


Gary Carr  
Regional Chair

**Halton Regional Meeting Schedule**

September 9 9:30 a.m. Health & Social Services Committee  
September 10 9:30 a.m. Planning & Public Works Committee

1151 Bronte Road, Oakville, Ontario L6M 3L1  
Tel: 905-825-6000 • Toll Free: 1-866-4HALTON • TTY: 905-827-9833 • [www.halton.ca](http://www.halton.ca)

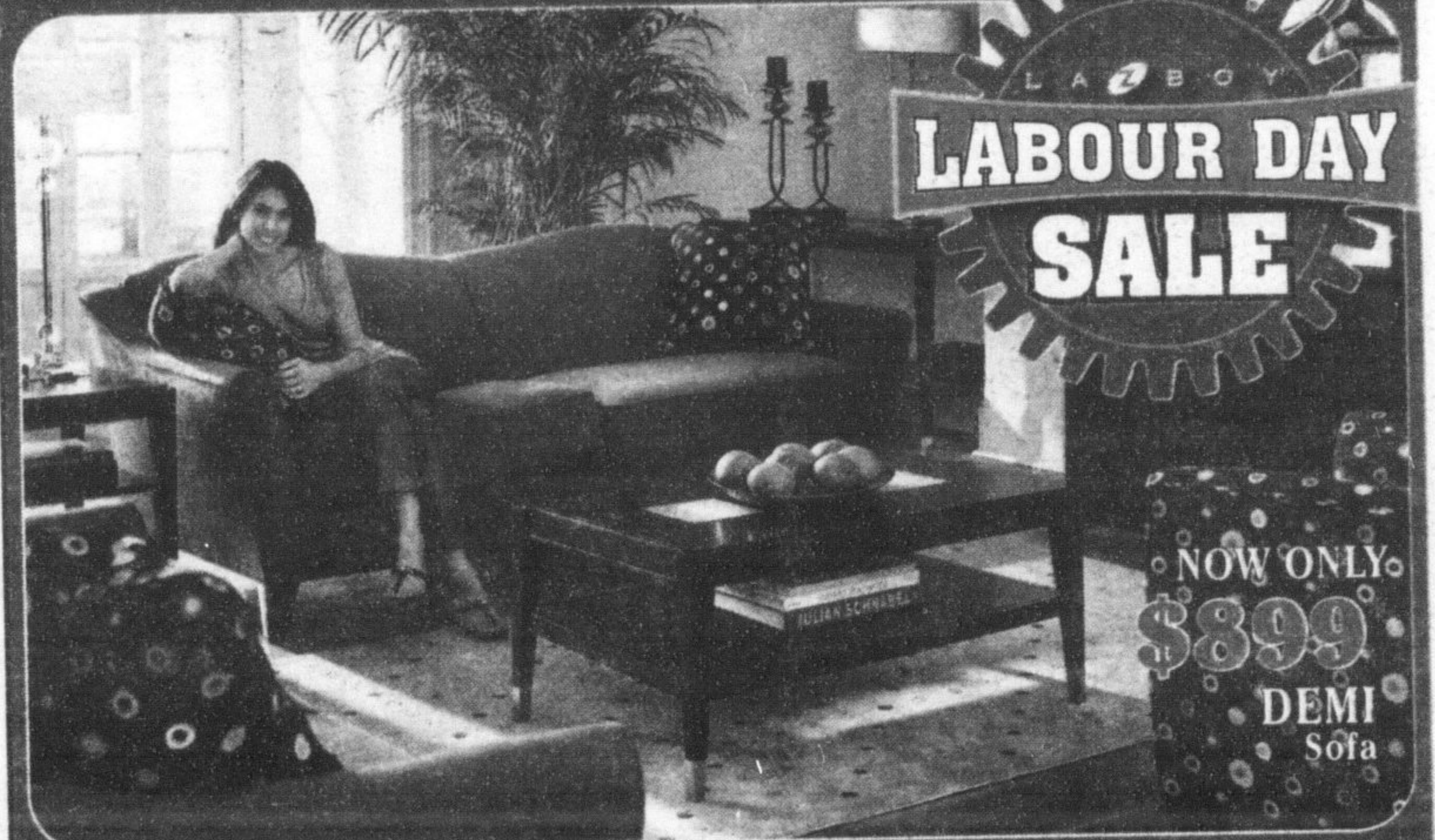


GRAHAM PAINE / CANADIAN CHAMPION

**FORE A GOOD CAUSE:** Canadian Cancer Society fundraising co-ordinator Nancy Yarmel (centre) accepts a cheque for \$35,000 in support of breast cancer research from Ladies Drive 4 Cancer organizers (from left) Sue DiPalma, Carole Sharp, Theresa Chuchmach, Irene Grier and Dot Brophy. The funds were raised at the annual golf tournament at Granite Ridge Golf Club.

**Comfortable Truth #32**

There are only three things you should work on during Labour Day!  
Your tan, your barbeque, and your reclining technique.



**Save 10%-50% off Storewide!**  
Factory direct savings on selected styles!

NO INTEREST  
NO PAYMENTS  
FOR  
ONE  
YEAR

**NOW ONLY \$1999\***  
REESE 100% Leather,  
Dual Reclining

**NOW ONLY \$549\***  
FERGUSON  
Reclining Wing

**NOW ONLY \$799\***  
LYLE Recliner  
100% Leather

**LAZBOY**  
FURNITURE GALLERIES

**Comfort. It's what we do.**

Monday - Wednesday: 10am - 6pm  
Thursday - Friday: 10am - 9pm  
Saturday: 10am - 6pm  
Sunday: Noon - 5pm

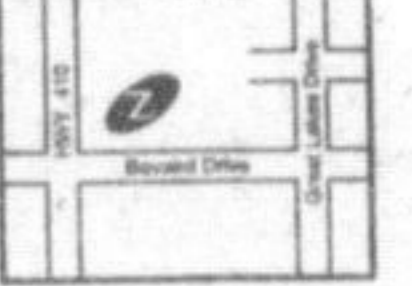
MISSISSAUGA NORTH  
Heartland Town Centre  
Mavis at Rieder Drive  
(by Home Depot)  
(905) 566-2211



OAKVILLE / MISSISSAUGA  
Dundas at Winston Churchill  
(NE Corner)  
(905) 565-0046



BRAMPTON  
Trinity Common  
Hwy 410 at Bower Dr  
(by Home Depot)  
(905) 761-5900



[www.lazboytoronto.com](http://www.lazboytoronto.com)

Ask about our free  
in-home design service

\*Prices shown as above reflect all discounts. Limited Quantities. Products may vary store-to-store. No further discounts on Final Markdowns, Hot Buys or Special Buys. On Approved Credit. Limited Time Offer.

RECLINERS SOFAS CHAIRS TABLES LAMPS RUGS ACCESSORIES