

Dateline

• from DATELINE on page A12

Euchre takes place at 1:30 p.m. The cost is \$2.50 for members and \$4.50 for non-members. Its Friday Evening Movie starts at 7 p.m. featuring *P.S. I Love You*. The cost is \$2. And Evening Euchre takes place at the Campbellville Lions Hall at 7:30 p.m. at a cost of \$2.50. For more information, call (905) 875-1681.

Saturday Aug. 16

The Milton Seniors' Activity Centre, 500 Childs Dr., holds a giant indoor garage sale from 9 a.m. to noon. Tables can be purchased for \$20, and you keep the profits. For more information and to reserve a table, call (905) 875-1681.

Sunday Aug. 17

The Milton Community Policing Committee holds a public forum from 2 to 5 p.m. at the police station at 490 Childs Dr. in the community room. It's aimed at addressing public and individual safety concerns. Topics include road safety, wills to protect seniors and how to set up a neighbourhood watch program. Refreshments are served.

Monday Aug. 18

Milton District Hospital holds a one-on-one breastfeeding clinic with a certified lactation consultant from 1:30 to 3 p.m. For more information or to make an appointment, call Jill Hicks at (905) 878-2383, ext. 7610.

The Milton Seniors' Activity Centre, 500 Childs Dr., holds duplicate bridge at 9:15 a.m., darts and billiards from 9 a.m. to 9 p.m. and table tennis from 7 to 9 p.m. The cost for each activity is \$2 for members and \$4 for non-members. Bid euchre takes place at 1:30 p.m. at a cost of \$2.50 for members and \$4.50 for non-members. For more information, call (905) 875-1681.

Charity poker run supports hospital

A scenic, 150-km ride this Sunday won't be just for leisure.

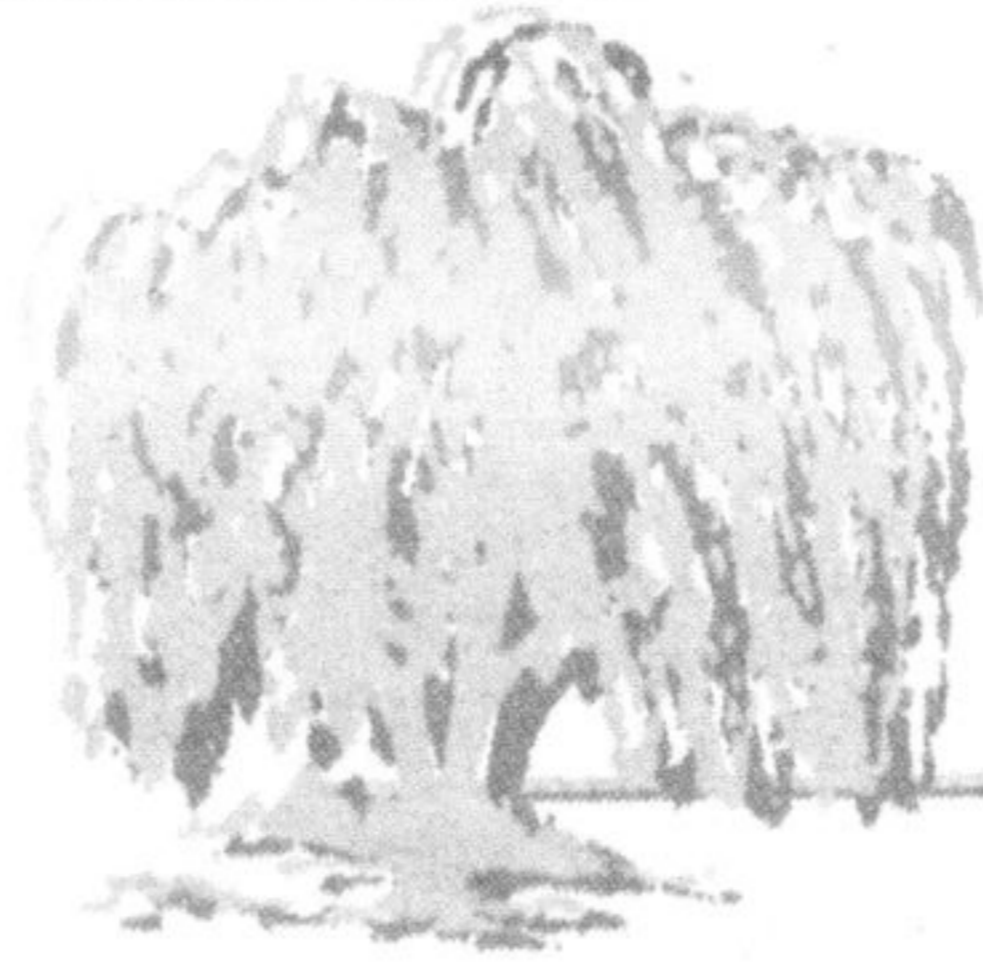
Motorcycle enthusiasts will join forces in support of the Milton District Hospital Foundation (MDHF) in organizer Ron Kulla's annual charity poker run, which has moved to Milton this year from Mississauga.

Riders and their passengers will gather at Halton Transmission, 88 Ontario St. N., before setting off.

The ride will end at the Halton Sportsmen's Association, 5155 Steeles Ave. W., where participants will enjoy a steak dinner and a special performance by the Low Down Dirty Band.

The cost is \$30 per rider and \$20 per passenger; however, registration fees are waived with \$100 in pledges. Registration will take place between 8 and 10 a.m.

To obtain pledge sheets and more information, call Kulla at (905) 601-3000 or visit www.charitypokerrun.ca.



CYPRESS

BRIDAL BOUTIQUE & INTIMATE APPAREL

To Celebrate our 10th Anniversary, we are offering Great Specials!

Anniversary Sale

Order a new Bridal Gown AND WE PAY THE TAXES!

Or choose from our sample wedding gowns, discounted from 10-75% off the already low sale prices on our sales racks.

Since 1998, Cypress Intimate Apparel and Bridal Boutique has been serving the Milton and surrounding community. We take pride in serving our customers, offering excellent service and expert advice.

We began the business specializing in Professional bra fittings and have grown the business to become certified Mastectomy fitters. We have a range of sizes from A-H and encourage women to have a bra fitting once a year. A couple of pounds either way can certainly change your bra size.

As part of our Bridal Boutique, we carry elegant designer bridal gowns in price ranges to suit everyone. With over 175 bridesmaids dresses to choose from, Cypress Bridal is a leader in the Halton area. Adorable Flowergirl dresses and quality Mother of the Bride/Groom dresses are also available. Our accessories will help complete the "look" that we proudly help you create.

Feel free to email or call us with any questions you may have. We look forward to offering you professional and caring service.

Book your appointment today.

Take an additional 20% off the already low sale prices on our lingerie sales racks!

* Cash & Carry, All Sales Final, No Layaways.

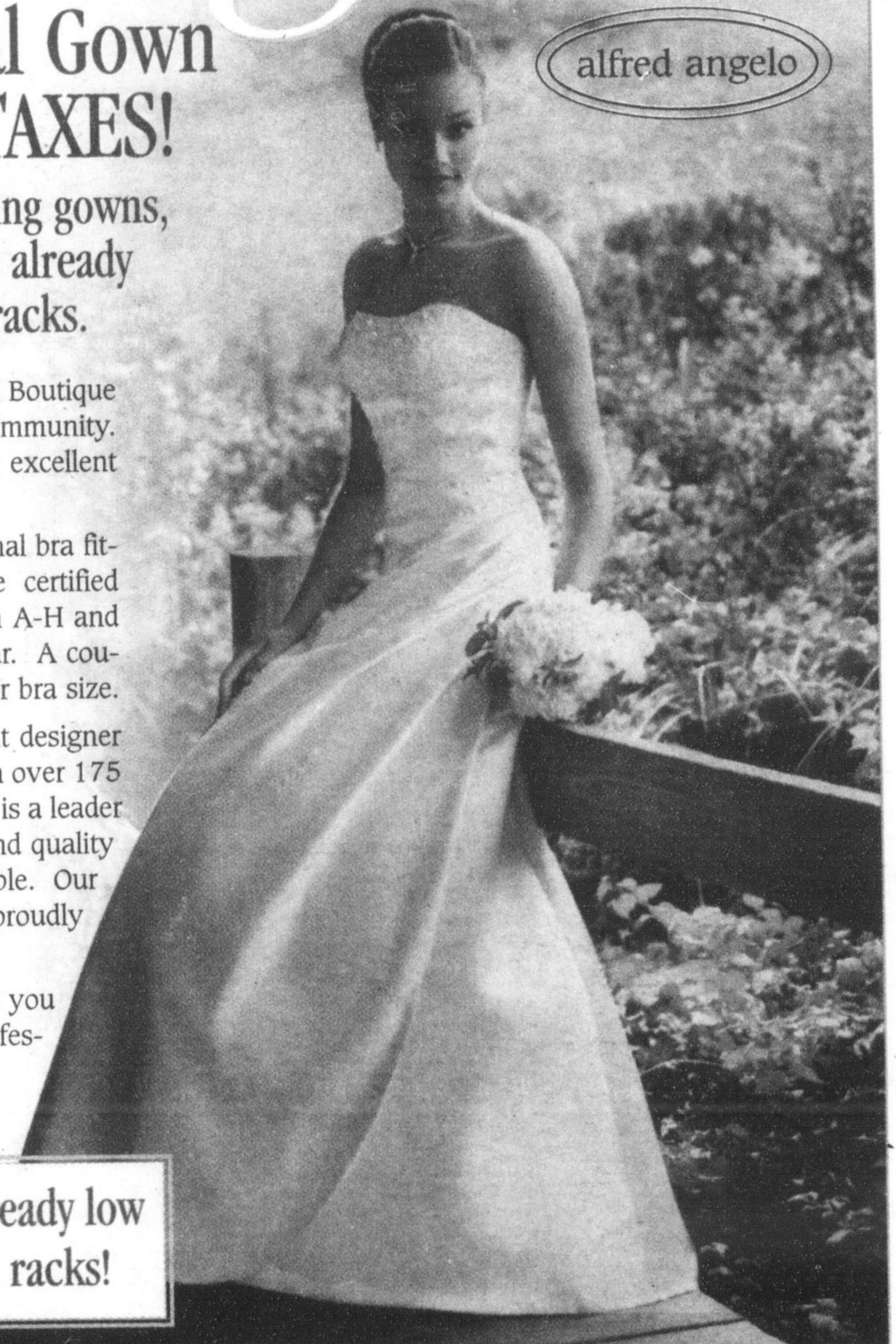
171 Main St. E. Downtown Milton

905-693-0932

www.cypressbridal.com

STORE HOURS

Tues-Wed10am-6pm
Thurs10am-7pm
Fri10am-6pm
Sat10am-4pm
Sun-MonCLOSED



alfred angelo

Discover Country Heritage Park

CORNFEST • AUG 16-17, 12-5PM

- Fresh Ontario Sweet Corn
- Served the old fashioned way
- Corn Husk Dolls
- The Corn Story - plant to production
- Vintage corn handling equipment
- Tractor drawn wagon rides
- Corn maze
- Parks exhibits open
- Country Canteen Open
- Kid's Scavenger Hunt & Prizes

AMERICAN CIVIL WAR RE-ENACTMENT

AUGUST 23-24, 10-5PM

- Authentic military camps
- Battle re-enactment
- Period music
- Medical demos
- Artillery, Cavalry
- Expert commentary
- Parks exhibits open
- Country Canteen Open
- Kid's Spy Mission & Prizes

FALL CRAFT SHOW • SEPT 20 & 21, 9-4PM

- Over 140 juried craft people
- Handmade quality gifts
- Great gifts for Christmas
- Country decorating at it's best
- Live entertainment
- Food available
- Debit machine on site
- Free Parking

Check out our website for all program updates...

www.countryheritagepark.com

8560 Tremaine Road, Milton

905-878-8151 or 1-888-307-3276

Daily admission: Adults \$7, Seniors \$6, Children \$4, Family Package: \$20 (some events differ). Programs subject to change.

Country Heritage Park is open all year for school daytrips, youth programs, corporate events, weddings, group tours & facility rentals. Call for details or email info@countryheritagepark.com.