

Get more bang for your buck

• from KIA on page B15

In terms of price, the base V6 Borrego LX starts at \$36,995 and the V8 LX is \$39,495. The top trim EX models start at \$40,995 for the V6 and \$43,495 for the V8. Prices differ from region to region and even dealer to dealer, but Borrego compares to the base Ford Explorer at \$41,399 and the base Nissan Pathfinder at \$38,298.

But it is what's included in the price where the Borrego

begins to stand out. The base LX V6 comes with part time four-wheel-drive (4WD), Electronic Stability Control (ESC), four disc brakes with ABS and traction control, Downhill Assist Control (DAC), Hill Assent Control (HAC), air, cruise, 17-inch alloy wheels, power locks/windows/doors, windshield wiper deicing, underbody skid plates, heated front seats, roof rails and the list goes on.

Moving up to the EX trim for \$4,000 and it adds full time



ABOVE: The interior of the Borrego whether LX or EX (shown) is roomy with amber lit instruments and a total cargo capacity of 2,765 litres.



RIGHT: The interior of the Borrego is full of creature comforts like Sirius satellite radio and a transmission tunnel mounted receptacle for MP3 music players..

4WD, leather, dual climate control, tilt/slide power sunroof, driver's seat memory (mirror, seat, steering column), bigger 18-inch alloy wheels and more.

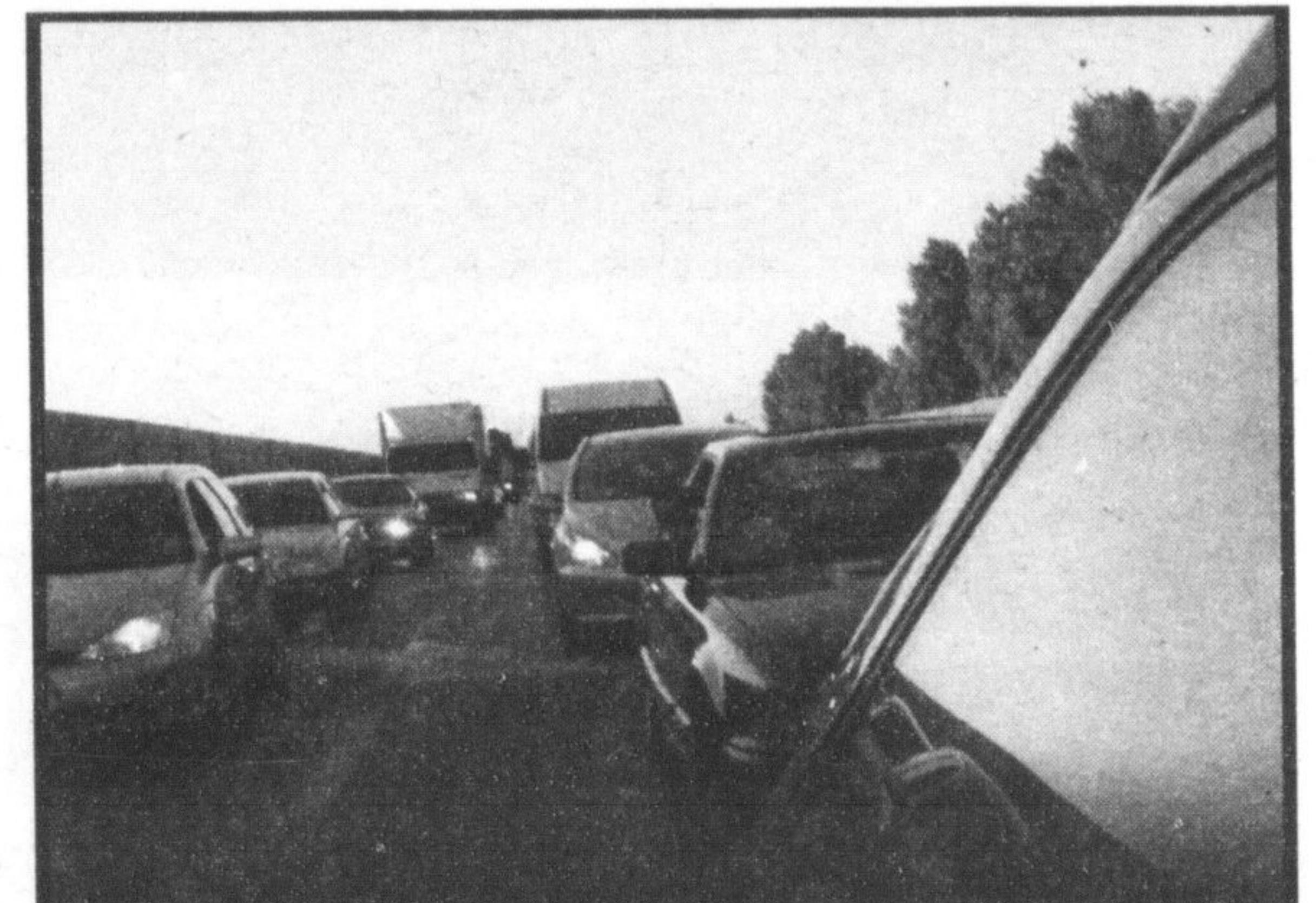
On the LX models, regardless of engine, the drivetrain consists of a five-speed Steptronic transmission with manual shift mode and a part-time 4WD system that lets the driver chose rear-wheel-drive, 4hi and 4lo. The EX models comes with a six-speed Steptronic automatic with a full-time 4WD system that adds an "Auto" setting that shifts torque around on demand.

Also standard on Borrego is a nifty rear differential that locks up when one wheel turns more than three degrees faster than the other. You will never know, or probably feel, the differential deploy but it does wonders in places less than ideal like the dedicated off-road park north of Calgary that Kia took us to as part of the Borrego press introduction.

With a rutted, clay road after an heavy rain, the surface was very slick. Selecting 4lo, the V8 I was driving clambered up and down and over protruding rocks with little effort. Although downhill and hill assent are standard equipment, I never needed these aids. Coming down a steep inline, engine braking and brake pedal modulation were all that was needed.

With an almost dainty turning radius of 5.5 meters, steering in the tight confines of a logging road or the heart of downtown Toronto is a boon.

• see EXCEPTIONALLY on page B19



Got Caught In Gridlock?

Get your up to date traffic reports before you begin your travels....

www.miltoncanadianchampion.com


GALLINGER PRE-OWNED

NEARLY NEW, BARELY, RARELY DRIVEN...

GENTLY, SLIGHTLY USED...

CARS, TRUCKS, MINI VANS & SUVs

2003 CHEVY Cavalier 2 Dr



SOLD

4 cyl, 5 spd manual, air, AM/FM/CD, tinted glass, rear spoiler, only 75,902km. Stk. #S8065A

2005 LINCOLN LS



V6, auto, air, p.group, p.seat, p.moonroof. Only 79,153 kms. Balance of Factory Warranty. Stk 2792A.

2007 FORD Mustang Convertible



V6, auto, A/C, p.group, only 23454 kms. Stk 2786A. Balance of Factory Warranty. (Previous USA rental).


2006 FORD F-150 XLT Supercrew



SOLD

V8 5.4L, auto, O/D, air, pw, pdl, pm, cruise & tilt, chrome wheels, running boards, boxliner, only 34,567km. Stk. #2766A

2006 FORD Escape XLT 4x4




V6, auto, A/C, p.group, sport group. Only 37,418 kms. Balance of Factory Warranty. Stk 2708A.

2005 FORD F-150 Supercrew XLT




5.4L V8, auto, air, p.group. Only 71,036 kms! With Warranty. Stk 2676A.

2005 FORD Focus SE Wagon



4 cyl, auto, air, pdl, spd control & tilt. Only 87,264 kms! Balance of Factory Warranty. Stk 2788A.

2005 MAZDA 3



4cyl, auto, air, p.group. Only 68,382 kms! Balance of Factory Warranty. Stk J8033A.

2003 FORD F-150 Supercab XLT Heritage




5.4L V8, auto, air, p.group, p.moonroof. Only 72,682 kms! With Warranty. Stk F8091A.

We're Thankful For Your Business



2002 FORD Escape XLS



V6, auto, air, p.group. Only 119,578 kms. With Warranty. Stk 2732B.

2007 FORD E-250 Cargo Van



V8, auto, A/C, pw grp, partition, running boards. Only 8515 kms! Stk 2796A. Balance of Factory Warranty. (Previous USA rental).

2003 FORD Windstar Sport




V6, auto, air, p.group, TV. Only 66,802 kms. Balance of Factory Warranty. Stk A8042A.

2004 FORD Freestar SE



V6, auto, air, p.group, quad captain chairs. Only 59,058 kms. Balance of Factory Warranty. Stk 2785A.

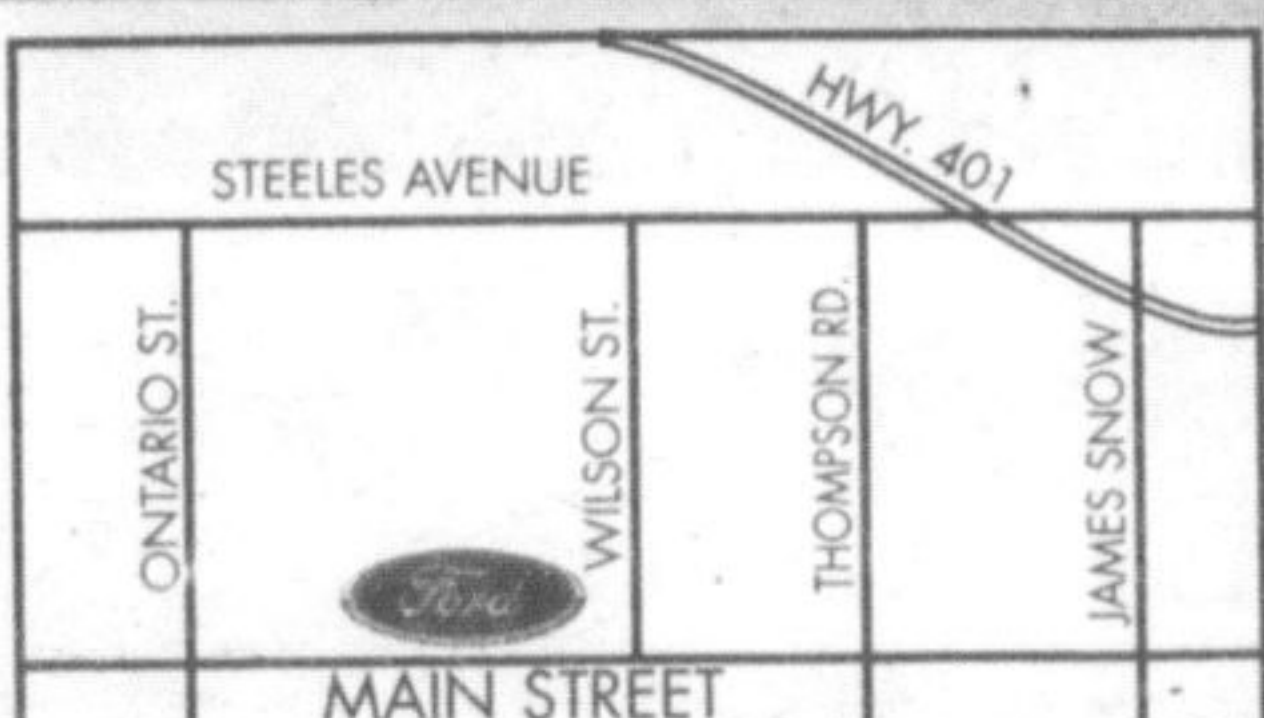
2007 FORD Edge AWD



6 cyl, auto, O/D, pw, pdl, pm, air, cruise & tilt, AM/FM/CD, alloy wheels, tinted glass, only 50,222 km. Balance of Factory Warranty. Stk. #2760A. (Previous USA rental).

UCDA 20+ YEARS CarProof VERIFIED

SALES • LEASING • SERVICE • PARTS



905 875-FORD
www.gallingerford.com



655 MAIN STREET EAST, MILTON, ONTARIO

DIRECT PARTS LINE 905.875.0111