

Queen of Credit

I WILL FINANCE YOU!

Anyone, Anytime, Anywhere.

I'LL MAKE YOUR FIRST 3 PAYMENTS

100% APPROVAL RATING!

Vehicles from \$5000 - \$25,000 whatever you need!

IF YOU HAVE AN INCOME ...YOU'RE APPROVED!

YOUR JOB IS YOUR CREDIT

PROBLEMS = SOLUTIONS

- On Disability
- Late Payments
- No Credit
- Bankrupt
- No Money
- Divorced
- 0 Down
- Lowest Interest Rates
- Credit Counselling

YOU'RE APPROVED!



GIANT USED CAR CLEARANCE

- TRUCKS • VANS • SUVs • CARS
- WHATEVER - 2,500 TO CLEAR!

Low as **\$37** per wk.
\$0 DOWN! SAME DAY DELIVERY

Specializing in 100% Credit Re-establishment

IF WE DON'T HAVE IT - WE WILL GET IT!

1-866-367-7390

2009 Nissan Maxima

• from JUST on page B18

Improved body stiffness helps improve noise isolation for passengers, while the engine note has been fine-tuned to just the right pitch.

The 3.5-litre V6 produces power to spare when passing or merging into high-speed traffic. And for 2010, Nissan officials have indicated that a diesel version of the vehicle will be offered.

The paddle shifters are a nice touch, particularly for anyone pinning for a manual transmission (which isn't offered by the way).

The CVT performs well, but the whine can get a bit much when you put the pedal to the metal—a common complaint with these type of transmissions. Acceleration is smooth and responsive and the adaptive shift control system is designed to adjust shift patterns for driver's demands in any driving situation.

Being a front-wheel drive vehicle, Nissan engineers also had to work hard to nearly eliminate that

dreaded torque steer so common with front drivers.

Much of the performance development work was done at the famed Nurburgring track in Germany as the Maxima was benchmarked against well-established European sports sedans.

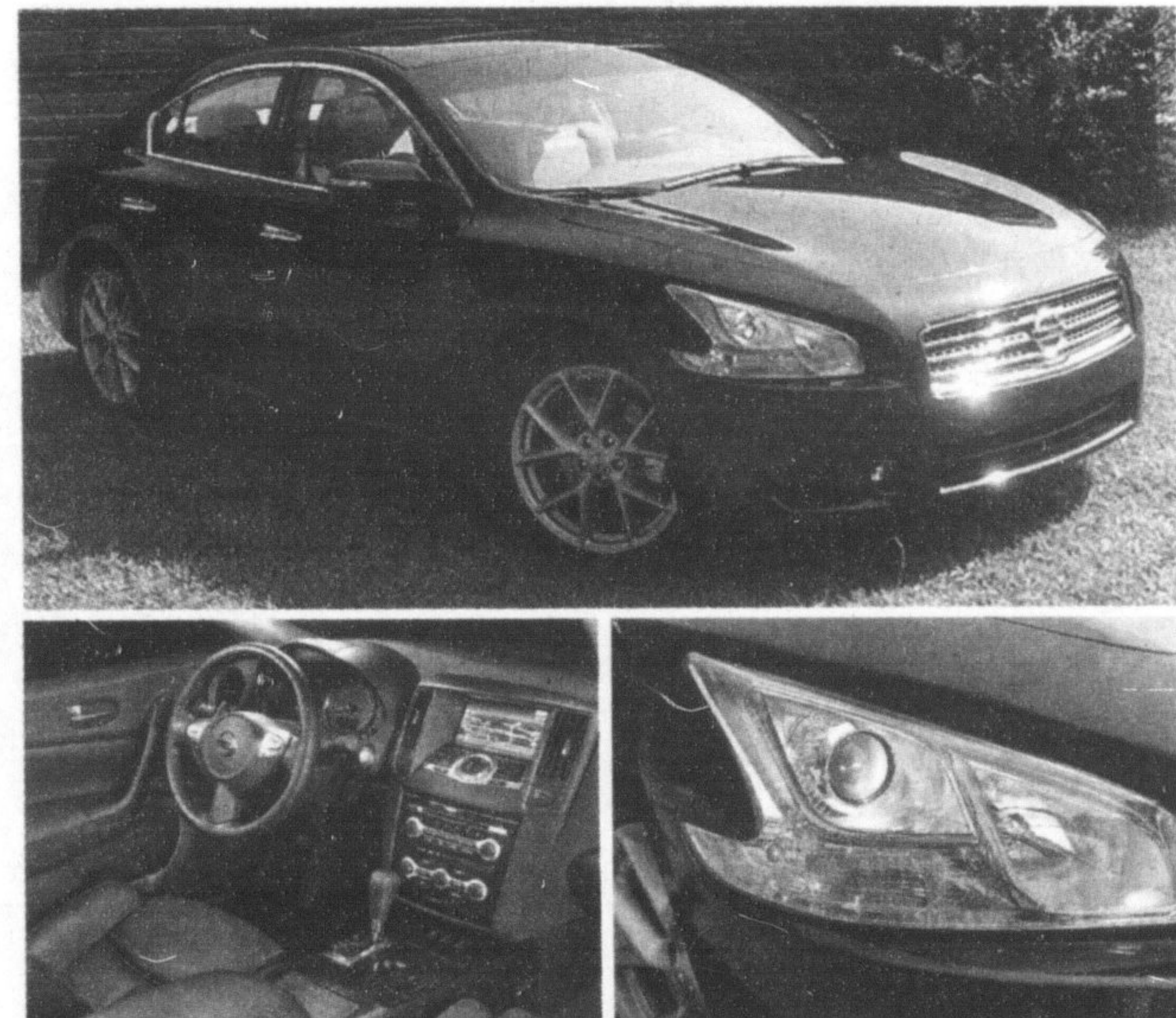
The end result is a vehicle that competes favourably in the ride and handling department with many of the top sports sedans on the market. The ride is a bit softer than most true sports cars, but it provides a nice balance between sportiness and comfort. It also has a more nimble feel than the previous generation and the turning diameter has been reduced by 2.6 ft. to 37.4 ft.

Meanwhile, the Maxima offers

the utility of four doors and five-passenger seating if needed. Both front and rear seats have plenty of leg room and there's adequate trunk space for golf clubs, suitcases and the like. The split 60/40 rear seats in the base model or fixed rear seats with pass through in some optional packages add to the cargo capacity.

Competing against the Toyota Camry and Avalon, Acura TL, Lexus ES 350, Volkswagen Passat and others, the 2009 Maxima is up against some heavy hitters in the mid-size sport sedan class.

All the upgrades for 2009 and what is promised to be competitive pricing could vault the Maxima to a leading entry in the class. The four-door sports car is back!



TOP RIGHT: The Maxima, the flagship sedan in the Nissan fleet, has undergone a complete redesign for 2009 with a more aggressive, sporty look.

BOTTOM LEFT: An interior look at the 2009 Nissan Maxima, this with the Premium Package featuring wood trim accent pieces.

BOTTOM RIGHT: A look at the distinctive headlamps on the Nissan Maxima for 2009. High intensity Xenon headlights are available as part of option packages.



JULY 12-19 Mazda

POSITIVELYDIFFERENT

- GREAT SERVICE
- FANTASTIC PRICES
- RELAXED ENVIRONMENT

ZOOM-ZOOM

HEAR WHAT OUR CUSTOMERS ARE SAYING:

"The service here has gone above and beyond our expectations."

~ STEPHANIE P.

CASH IN ON GREAT DEALS

OUR CERTIFIED VEHICLES INCLUDE:
30 DAY MAJOR COMPONENT WARRANTY
150 POINT INSPECTION
1 YEAR OF OIL CHANGES
7 DAY EXCHANGE
WHEEL LOCKS

'04 Tribute 2WD \$12,981	'04 Mazda 3 GS \$12,981	'04 Mazda 6 \$10,981	'05 Mazda MX-5 \$22,981	'04 Mazda 6 GS Wagon GFX \$13,981	'06 Mazda MPV \$14,981
'06 B4000 4x4 \$17,981	'04 Mazda Miata GS \$11,981	'05 Mazda 3 GT Sport \$14,981	'05 Mazda 3 GT Sport \$14,981	'04 Mazda 3 GT Sedan \$14,981	'05 RX8 GT \$21,981
'04 Mazda 6 GS [58K] P1740 \$12,981 \$128/mo	'05 Mazda 3 GS [80K] P1733 \$13,981 \$138/mo	'06 Mazda MPV [76K] P1683 \$14,981 \$148/mo	'04 Mazda 3 GX [84K] P1742 \$10,981 \$108/mo	'04 Mazda RX8 GT [46K] P1702 \$20,981 \$205/mo	'04 Mazda 3 GT [100K] P1708 \$13,981 \$138/mo
'04 Mazda 6 Wagon GFX [95K] P1738 \$13,981 \$138/mo	'04 Mazda 6 GS [89K] P1739 \$10,981 \$108/mo	'04 Mazda MPV [83K] P1703 \$13,981 \$138/mo	'05 Mazda MX-5 [36K] P1725 \$22,981 \$224/mo	'05 Mazda 3 GS [67K] P1721 \$13,981 \$138/mo	'04 Mazda 3 GT Sport [70K] P1701 \$15,981 \$155/mo
'05 Mazda 3 GT Sedan [65K] P1743 \$14,981 \$148/mo	'05 Mazda 3 GT Sport [88K] P1698 \$14,981 \$148/mo	'04 Mazda Miata GS [157K] P1651 \$11,981 \$118/mo	'04 Mazda 3 GS [100K] P1687 \$12,981 \$128/mo	'04 Mazda 3 GS [60K] P1677 \$12,981 \$128/mo	'04 Mazda 3 GS [100K] P1687 \$12,981 \$128/mo
'05 Mazda Tribute 4WD [36K] P1741 \$14,981 \$148/mo	'04 Mazda MPV [44K] P1676 \$12,981 \$128/mo	'05 Mazda RX8 GT [42K] P1723 \$21,981 \$214/mo	'04 Mazda 3 GT Sport [70K] P1701 \$15,981 \$155/mo	'04 Mazda 3 GS [100K] P1687 \$12,981 \$128/mo	'04 Mazda 3 GS [100K] P1687 \$12,981 \$128/mo
'04 Mazda 3 GS [63K] P1650A \$12,981 \$128/mo		'06 Mazda B4000 4X4 [38K] P1693 \$17,981 \$176/mo	'04 Mazda 6 GT [86K] P1724 \$15,981 \$155/mo		

VIEW 25+ PICTURES OF EACH VEHICLE ONLINE AT: www.oakvillemazda.com

905-827-4242

1291 SPEERS ROAD, OAKVILLE

MON.-THURS. 9AM - 9PM

FRI.-SAT. 9AM - 6PM

CREDIT PROBLEMS IN THE PAST? NO CREDIT APPLICATION WILL BE REFUSED!

Disclosure: Finance payments are biweekly payments on 60 month term with 10% down. Payments include fees and taxes. I.e. \$11,981 plus tax with \$1,200 down equals \$118 bi weekly @ 7.85% with cost of borrowing being \$2,686 ver the term. Cash prices exclude taxes.