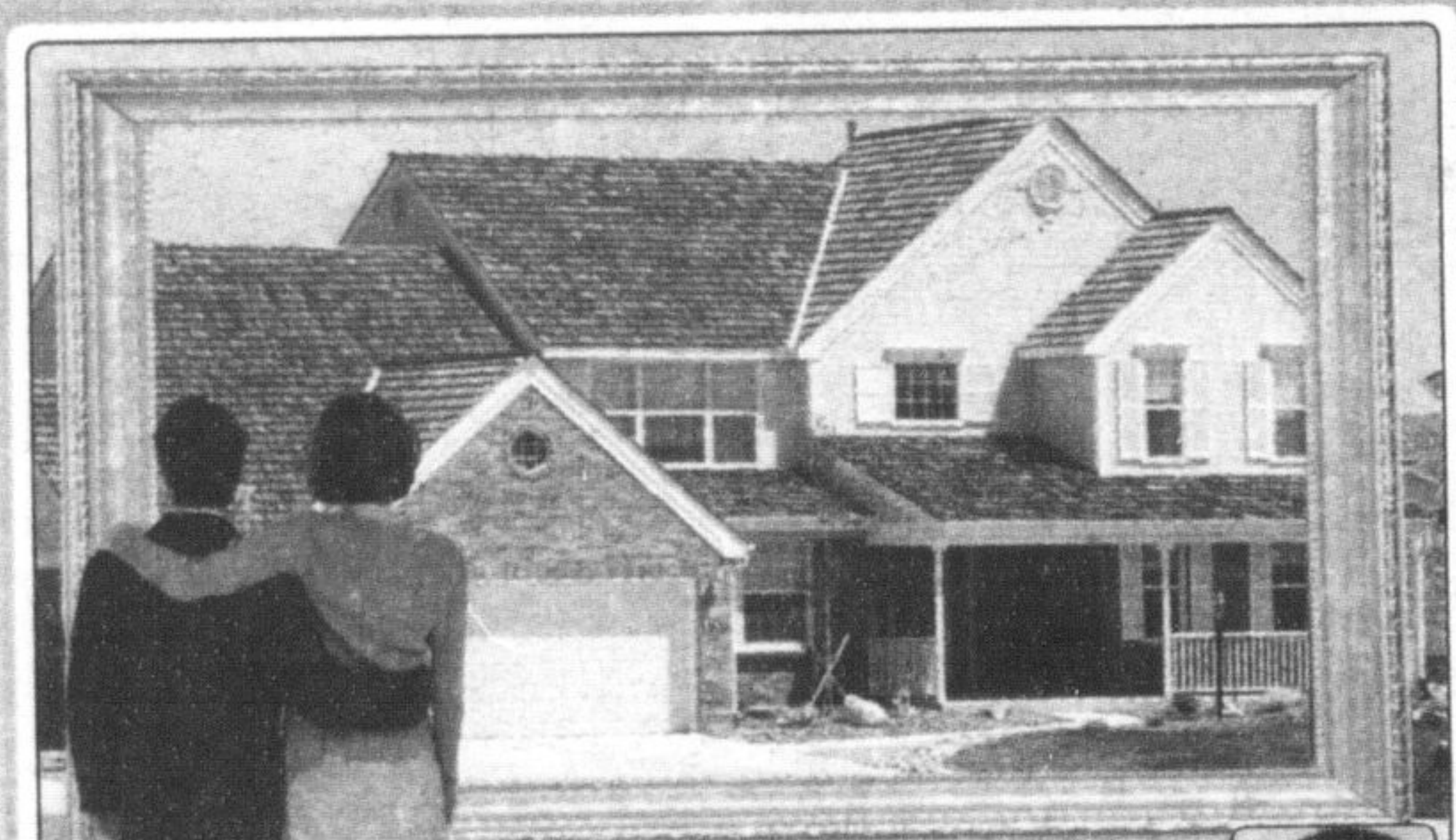


# Weekend SPOTLIGHT



### Create Traffic!!

Call Diane to book your listing in the Tuesday Best Homes Real Estate Section and Friday Spotlight on Homes Feature.



MILTON CANADIAN CHAMPION 905-878-2341 X212  
DIANE WOLSTENHOLME, SALES REPRESENTATIVE



OPEN HOUSE  
SUNDAY 2-4

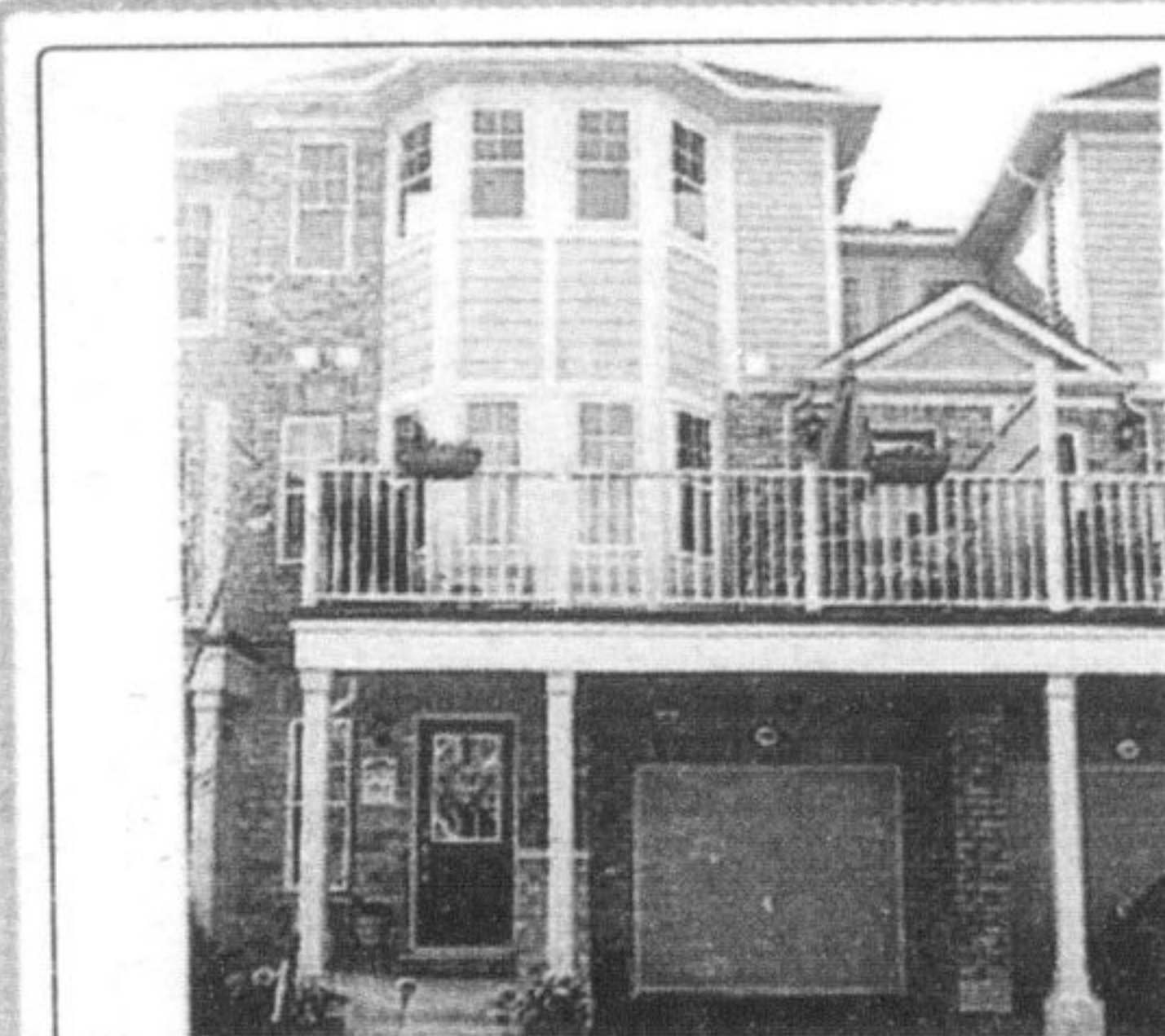
\$429,900



### 1220 FIELD DRIVE

Gorgeous, upgraded, detached 4 bedroom. Large gourmet kitchen with centre island & S/S appliances. Main flr has HDWD. Spacious family room with fireplace. Separate living & dining room. Fully fenced lot with large deck/accent lighting. Walk to park/amenities. See virtual tour at [www.remaxaboutowne.com/blain](http://www.remaxaboutowne.com/blain)

RE/MAX ABOUTOWNE REALTY CORP. BROKERAGE  
BEULAH BLAIN, SALES REP. (905) 338-9000



OPEN HOUSE  
SUN  
2 - 4 PM  
744 SHORTREED CRES.  
MILTON

### MAGNIFICENT MATTAMY FREEHOLD!!!

Popular Springdale model 2 years new, thousands spent in upgrades shows like a model home! Next to golf course on a quiet crescent. Hardwood floors on main floor, gourmet kitchen with stainless steel appliances & 3 good sized bdms. Close to schools, shopping, GO station & sports arena. Only \$279,900

ROYAL LEPAGE KINGSBURY REALTY, BROKERAGE  
Gary Singh, Sales Rep. 905-568-2121



ROYAL LEPAGE

## HALTON

# YOU'RE IN FOCUS

A MONTHLY PUBLICATION FOCUSING ON THE RESIDENTS OF MILTON & AREA

YOU'RE IN FOCUS is a new free monthly paper for Milton.

IN FOCUS is different from your newspaper. It's designed to offer something new to our readers - a cheerful, colourful, well designed publication of photo happenings. Readers will be invited to have their own photos, short stories, poetry, artwork and pet photos published, making this a keepsake publication, truly focused on (& created by) our readers.

As an advertiser, IN FOCUS will offer you the opportunity to submit photos of your new business opening, new product arrivals, employee celebrations, business functions & anniversaries, sporting events, festivals, charitable events...anything you would like to showcase. IN FOCUS, will offer the reader the chance to see the personal side of your business!

Residents of Milton will be able to pick up a copy of IN FOCUS at local businesses, offices, library and schools.

### PRINTED ON HIGH QUALITY WHITE STOCK

#### 1/16 PAGE

2.5 x 3.5 inches

\$70

includes process colour

#### 1/2 PAGE VERTICAL

5 x 14 inches

\$365

includes process colour

#### FULL PAGE

10.25 x 14 inches

\$675

includes process colour

#### 1/8 PAGE

5 x 3.5 inches

\$125

includes process colour

#### 1/2 PAGE HORIZONTAL

10.25 x 7 inches

\$365

includes process colour

#### BACK PAGE

10.25 x 14 inches

\$775

includes process colour

- ORDER 4 ISSUES, GET THE 5TH @ 25% OFF
- ORDER 6 ISSUES, GET THE 7TH @ HALF PRICE
- ORDER 8 ISSUES, GET THE 9TH FREE
- ADD ON GEORGETOWN!  
SAME AD FOR HALF THE PRICE!

Produced by your community newspaper

## The Canadian Champion

555 Industrial Dr., Milton

ROGER BERTRAND OR DIANE WOLSTENHOLME

(Real Estate Sales Representatives)

[rbertrand@miltoncanadianchampion.com](mailto:rbertrand@miltoncanadianchampion.com)

[dianew@miltoncanadianchampion.com](mailto:dianew@miltoncanadianchampion.com)

Tel: (905) 878-2341 Roger x252 or Diane x212 Fax: (905) 876-2364

[www.miltoncanadianchampion.com](http://www.miltoncanadianchampion.com)

CALL NOW  
To Reserve Your  
Ad Space For  
The Next Issue!



## INVIDIATA TEAM RE/MAX aboutowne

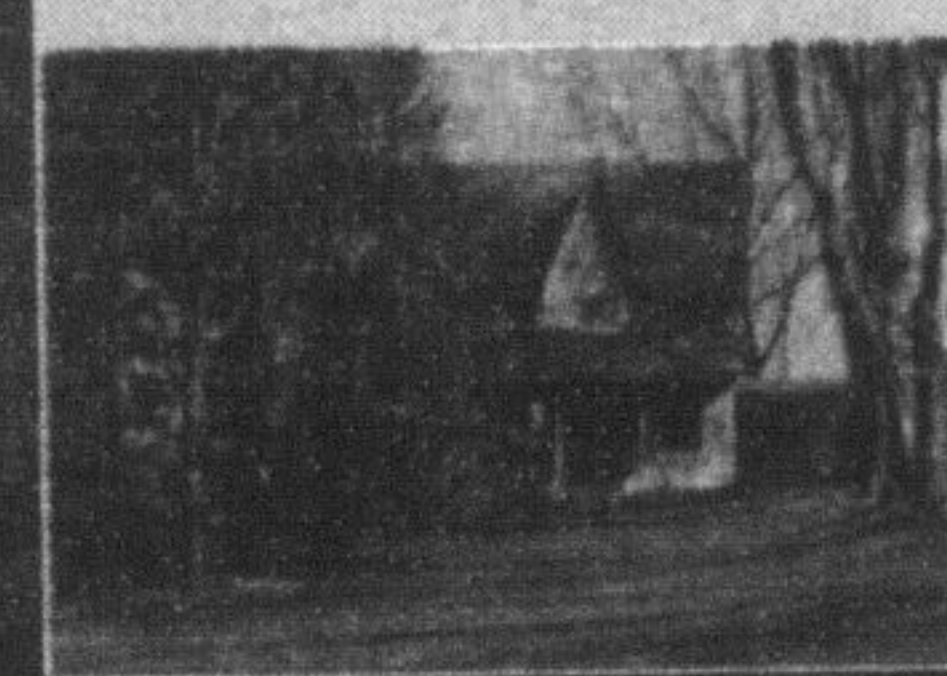
Leaders in Luxury Real Estate

[www.invidiata.com](http://www.invidiata.com)



CHRISTOPHER  
INVIDIATA

### CAMPBELLVILLE \$979,900



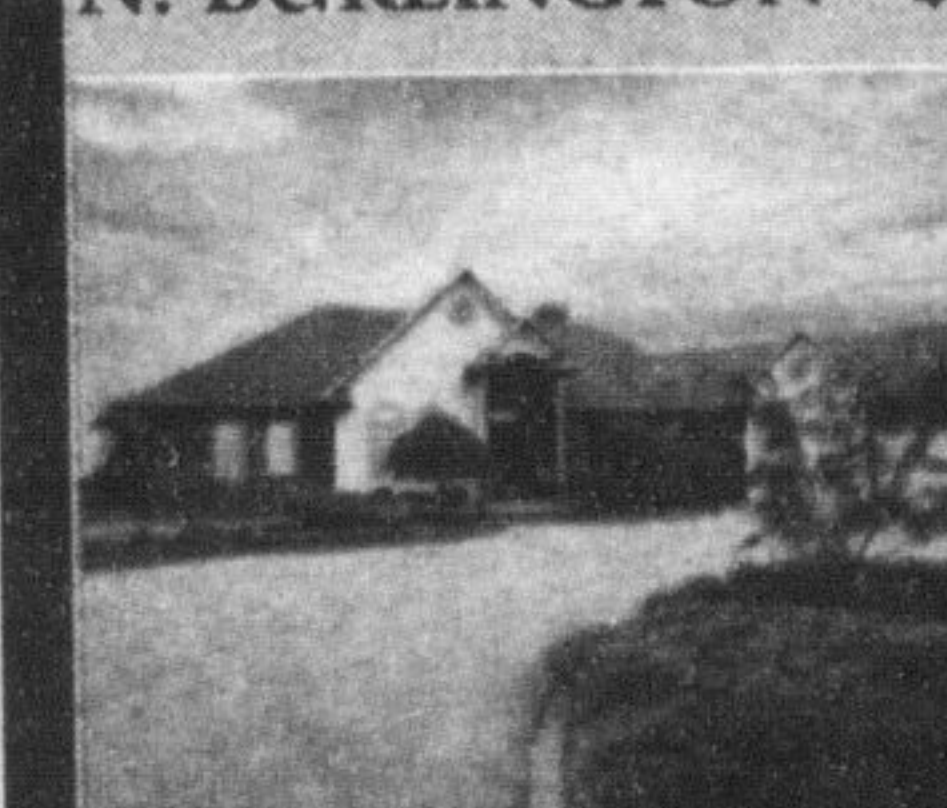
- Updated country stone home built in 1876
- Overlooking 12 acres of mature forest and manicured grounds
- Close to golf courses, hiking trails and conservation areas
- Minutes from town and highway access

### CAMPBELLVILLE \$1,075,000



- Original Jay Robinson build
- 18 acres of serenity North of Campbellville
- 4 bedrooms with walk in closets
- 3 1/2 baths
- Finished lower level with grade level walk out to multi-tiered cedar deck

### N. BURLINGTON \$1,075,000 | NEW PRICE



- 12 year old custom built country estate
- Maple kitchen w/ granite and H/W floors
- Finished L/L with 4th BR and heated floors
- Privately nestled on 1.86 acres
- Stone's throw to many fine golf courses, hiking trails and conservation areas
- Minutes from the conveniences of town

### RURAL MILTON \$1,389,000



- Custom built home with panoramic views of the city
- Nestled on the escarpment on approx. 2 acres with mature trees, gardens and pond
- 2 stone patios for outdoor entertaining
- 3 bedrooms, 3 full baths
- Live and play in scenic rural Milton



CINDY  
AVIS\*



JAY  
BRIDLE\*\*



SUSAN  
DANIO\*\*



DIANE  
DAWTREY\*



PATSY  
GAUER\*



MARIJA  
KOLESAR\*



KIRSTEN  
LEGGAT\*



NADIA  
MECCO\*



LLOYD  
PISAPIO\*

\* SALES REPRESENTATIVE \*\* BROKER

RE/MAX 24 HOURS 905.632.2233 ~ 83 Reynolds Office Direct 905.339.3444  
[sales@theinvidiataeam.com](mailto:sales@theinvidiataeam.com) ~ [www.invidiata.com](http://www.invidiata.com)

To advertise in this feature please call **ROGER** ext. 252 at 905-878-2341 or **DIANE** ext. 212 at 905-878-2341  
[rbertrand@miltoncanadianchampion.com](mailto:rbertrand@miltoncanadianchampion.com). email: [dianew@miltoncanadianchampion.com](mailto:dianew@miltoncanadianchampion.com)