

COVER *story*



The homes have been fully decorated to appeal to the stylish and sophisticated active adult who appreciates the finer things in life.

Master-planned for excellence

Charleston Homes offers beautiful designs in picturesque Rockwood

From custom country estates to spacious single-family homes and executive towns, Charleston Homes has created a number of friendly and charming communities in the picturesque village of Rockwood. Carriage Place will feature 42 luxury townhomes ideal for empty-nesters and young professionals who are eager for a little peace and quiet. Carriage Place's stately town homes are clustered in intimate groupings of two, three and four that grace this private cul-de-sac in an established neighbourhood. These residences enjoy fine architectural appointments such as a tumbled stone base, rich heritage brick, coach-style garage and beautiful mullioned windows capped by a charming gabled roof. Set within a green space ravine, Charleston Homes' character and quality are evident from the moment you enter this enclave.

Perched high above the Eramosa River and charming historic village of Rockwood, local master-builder Charleston Homes, has an intimate collection of homes on a landscaped cul-de-sac. Each of the plans offers exceptionally spacious, wide town homes with rare walkouts basements or "daylight" aboveground basements. Unlike traditional towns these homes are clustered as semis or small blocks of three or four. The look and feel is handsome stone and stucco with pretty mullioned windows, hipped

roofs and classic coach style garages.

Charleston Homes has built two town home models to showcase the unique designs and custom crafted features available at Carriage Place. "The Charleston Home buyer is a sophisticated and savvy consumer who recognizes quality and classic style. The two models are a virtual showroom of exterior and interior finishes that allow the buyer to choose, a la carte, the many options and styles that suit their lifestyle.

The homes have been fully decorated to appeal to the stylish and sophisticated active adult who appreciates the finer things in life.

The Brookfield end unit model offers 1955 sq.ft of stylish sophistication. The foyer, study and dining room are decorated with elegant furnishings in dark woods, rich glossy floors, and dramatic periwinkle blue and soft cream walls accented by double French doors. The first impression is warm, classic and elegant.

The rear of the home opens up to reveal a stunning combined kitchen and great room. Vaulted ceilings, three sets of soaring windows and the rooms great proportions make this gathering place extraordinary. The kitchen is a gourmet's delight with vast expanses of creamy marble countertops, pantry, chef's island and stainless steel appliances. The seating area is plush and inviting with glamorous furnishings dressed in silks, velvets and wools. Built-in cab-

inetry, art niche, gas fireplace and soft lighting make this room both cozy and formally elegant at the same time. The rest of the main floor boasts a dramatic powder room, mudroom/laundry and double garage access.

Upstairs the Brookfield offers two innovative layouts that are ideal for empty nesters or professionals. Available as a two bedroom or megamaster suite, this plan offers Charleston's Loft landing or "brain space", a clever way of utilizing a generous landing area. Built-in work surfaces can become computer alcoves, home office, and gallery or buffet area for the master suite.

The master bedroom is a sumptuous retreat complete with spacious bedroom, walk-in closet, and spa-inspired ensuite. The ensuite is warm and inviting with "super sized" glass shower outfitted with rain showerhead and body sprays, bench seating and artisan-tile work. A second bedroom and ensuite bath makes a perfect guest suite or private bedroom for visiting kids home from university.

The Brookfield basement is a fantastic lower level that is bright and airy due to its abundance of large windows and walk out plan. The homebuyers can adapt this lower level to anything they wish. This model home was decorated to reflect a sophisticated games/media/entertainment room with built-in café/bar and merchan-

dised with overstuffed leather club chairs, casual furniture, bar stools, tasteful card table and art work. A powder room and second room is ideal for a guest suite or even home office. The unfinished area is very large and ideal for storage, wine cellar, hobbies etc. Walk out to a wooded conservation area with backyards as deep as 175 feet.

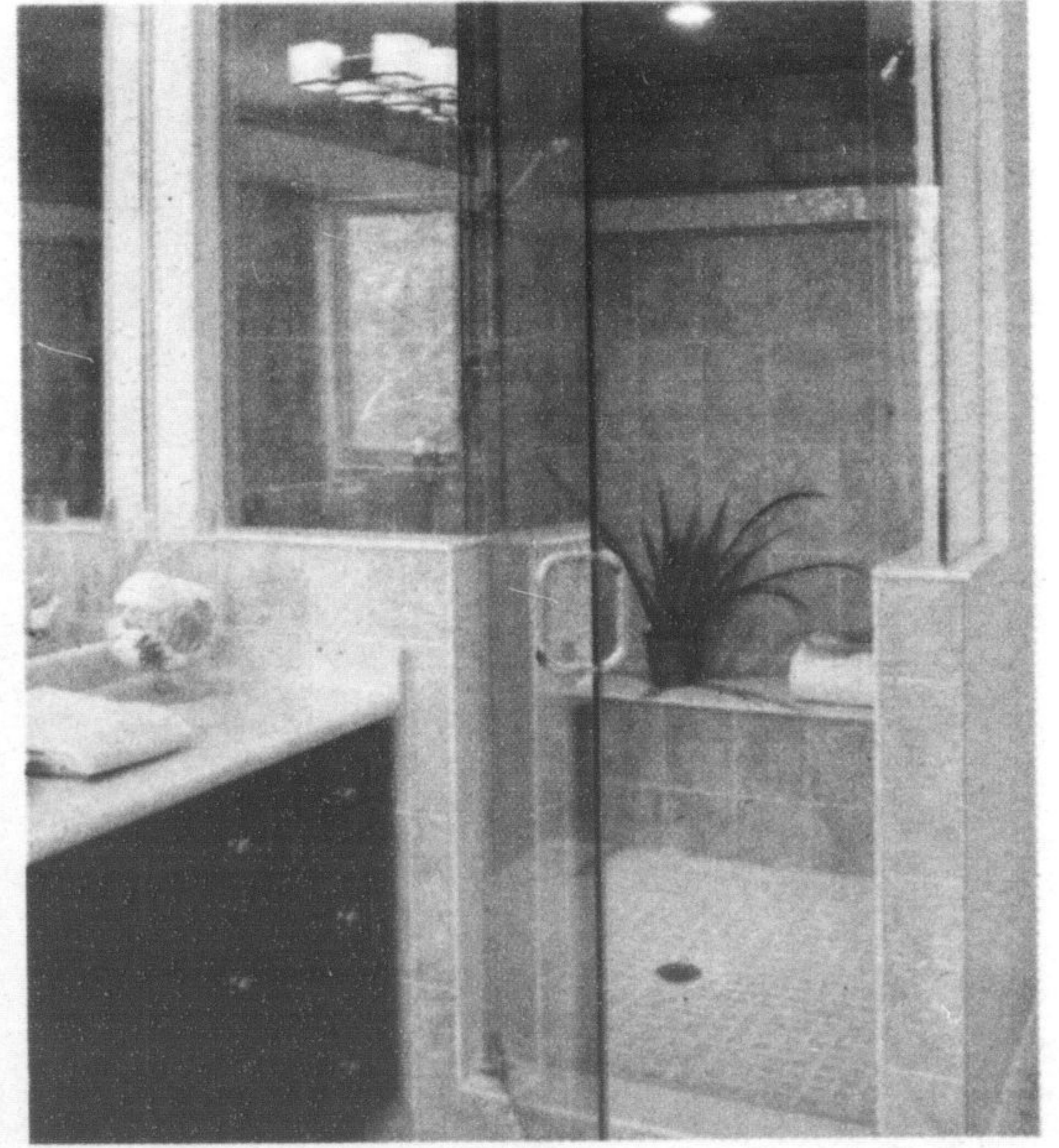
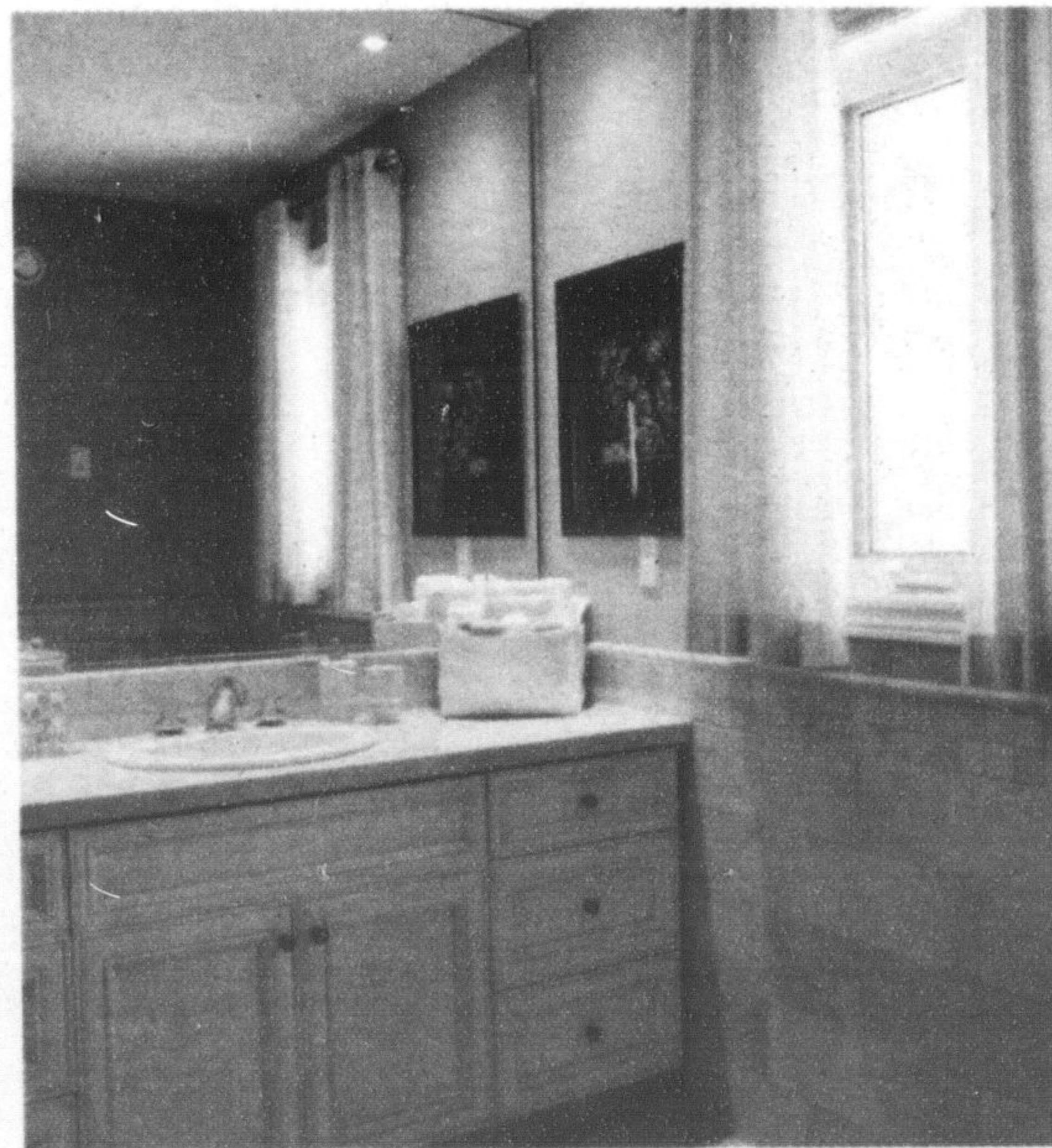
The adjoining model - The Drummond, is a 1911 sq.ft. plan with even more features dressed in a lighter colour palette and showcasing different built-ins, closet systems, cabinetry, master ensuite layouts. It even includes an adaptation of the Charleston "loft landing" that features a hotel-suite inspired "buffet" kitchen - a terrific place to brew up coffee or have a glass of orange juice while you get ready for the day! The Drummonds' lower level also relays the flexibility and functionality of these generous bonus rooms with plenty of options for adapting a bright walkout to your lifestyle needs.

The Model home is located off Cobblestone, from Hwy. 7, in the village of Rockwood. Call: 519-856-4411 or visit charlestonhomes.com for more details.

Hours: Saturday & Sunday 12:00 to 5:00 P.M. Monday thru Wednesday from 2:00 to 7:00 P.M.

Prices: From \$371,400

Occupancy: From June to November 2008.



Charleston Homes has built two town home models to showcase the unique designs and custom crafted features available at Carriage Place.