

# Wallace

PONTIAC • BUICK • CADILLAC

801 MAIN ST. E.  
MILTON

VISIT OUR SHOWROOM

905-878-2355

2003 HONDA CIVIC - 2 TO CHOOSE!  
AUTO, A/C, 2DR & 4DR, TOP CONDITION!  
GREAT ON GAS!

from \$8,980  
\$99 BIWeekly tax incl. \$0 Down

2005 GMC JIMMY SLS  
4x4, Automatic, A/C, Full Power  
Package, CD

\$9,890  
\$109 BIWeekly tax incl. \$0 Down

2004 GMC SIERRA SLE 4WD  
CREW CAB, A/C, FULL POWER PACKAGE,  
BOX LINER

\$19,995  
\$225 BIWeekly tax incl. \$0 Down

2005 GMC SIERRA SLT Z71 4WD  
CREW CAB, A/C, LEATHER, FULL POWER  
PACKAGE, LOTS OF CHROME

\$22,995  
\$259 BIWeekly tax incl. \$0 Down

2003 SATURN VUE SUV  
4 CYL., 5 SPEED, A/C, CD STEREO,  
ROOF RAILS

\$7,980  
\$99 BIWeekly tax incl. \$0 Down

SEE OUR USED CARS - WWW.WALLACEPONTIAC.COM

HATTON HILLS JEWELLERY  
...On Main

Welcome Back  
Downtown  
**JO'LEEN'S**

218 Main St. E., Milton  
905-875-2999

# THE MILTON SHOPPING news

SERVING MILTON, CAMPBELLVILLE & OAKVILLE  
TOTAL WEEKLY CIRCULATION 97,800. CLASSIFIED SALES 905-827-2244, RETAIL SALES 905-878-8855

VOL. 26, NO. 27  
TUESDAY, JUNE 3, 2008

**TROY'S DINER**



HOME OF THE  
FAMOUS  
**\$3.99**  
ALL DAY  
BREAKFAST

245 MAIN STREET EAST 905-878-8783

ECLIPSE SHUTTERS  
DECORATIVE DREAMS  
• SHUTTERS • BLINDS • DRAPERY • PAINT  
• WALLPAPER • FLOORING • LIGHTING  
905-691-0515 cywmilton@sympatico.ca

**A Designers Touch**  
CUSTOM WINDOW COVERINGS  
**PATIO DOOR SHUTTER SPECIAL**  
STARTING FROM **\$699.00**  
HunterDouglas Custom Blinds, Silhouettes & The all new Pirouette Door inserts also available  
**(905) 878-1180**  
Visit our Showroom at:  
547 Main. St. E. Unit 21, Milton  
(by appt. only)

**FOR SALE:** 61 inch Samsung Tantus HDTV Ready, \$600. RCA TV, 27 inches, \$75. Navy leather couch, \$200. Retractable coffee table, \$200. Upright bag less vacuum, Eureka and Dirt Devil, \$75 each. 905-469-9431

**CHILDREN'S OUTDOOR PLAY SETS**  
Wooden complete sets for \$300/\$400. New HDP plastic centers! Safer, healthier, no chemicals, life time warranty, a must see product, \$900/\$1,400. 905-319-9032

## CARPETING

I have several thousand yards of new Stainmaster and 100% nylon carpets. Will do living room and hall for \$389.00. Price includes carpet, pad and installation (30 sq. yds.). **NO INTEREST & NO PAYMENTS FOR 1 YEAR O.A.C.**  
Call Steve at **SUBURBAN CARPETS**  
905-878-0006

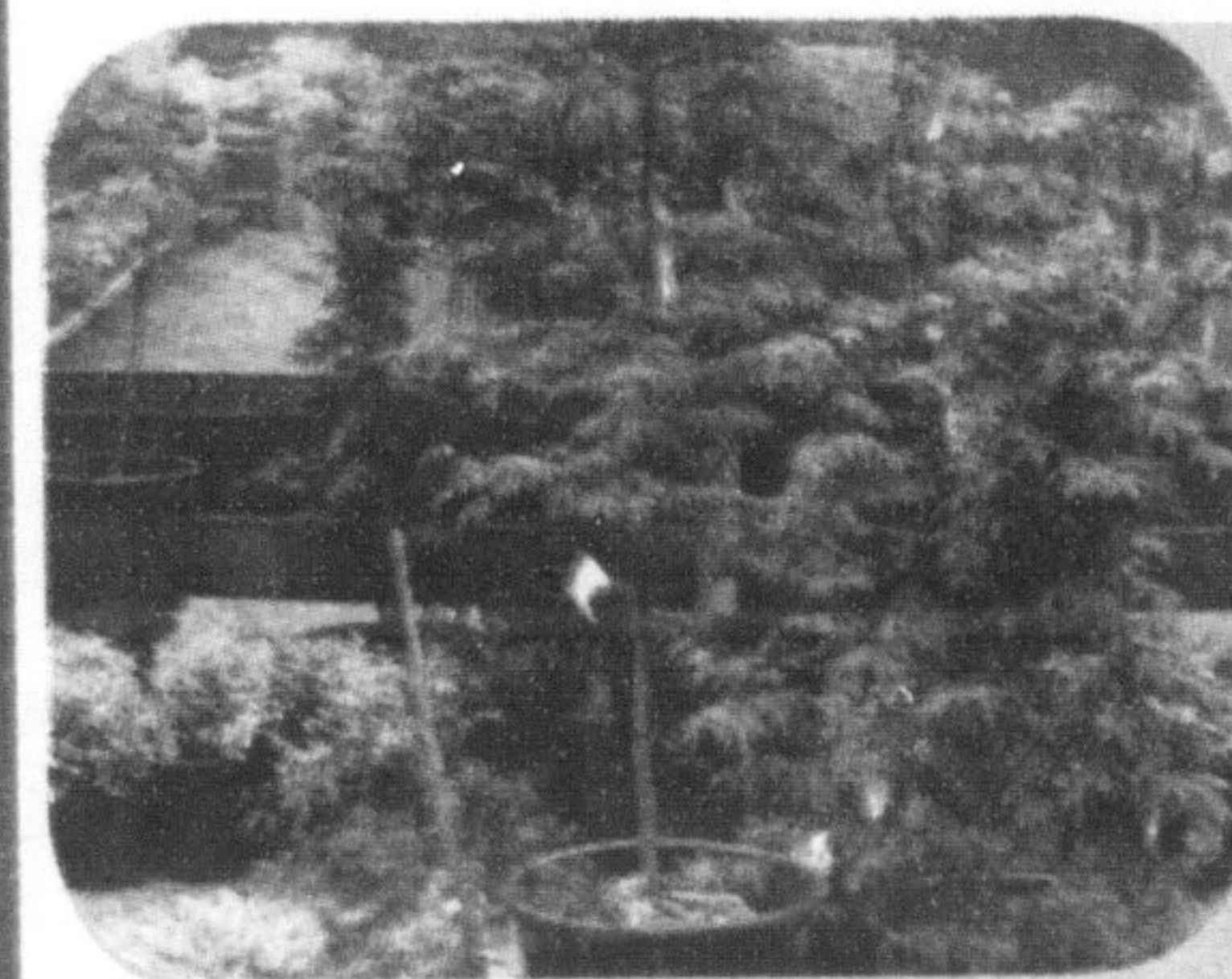
**APPLIANCES**  
White Kenmore stove and white Kenmore heavy duty, energy saving washing machine. Very good condition. \$300 each obo. 905-878-0717

**FOR SALE**  
Jr. birch computer desk, 2 drawers with hutch and matching storage bench, \$350. Air hockey table, \$200. Call Robin 905-815-0959

**ROYAL STONE**  
INTERLOCKING & CONCRETE  
**(905) 693-8106**  
www.royalstone.ca

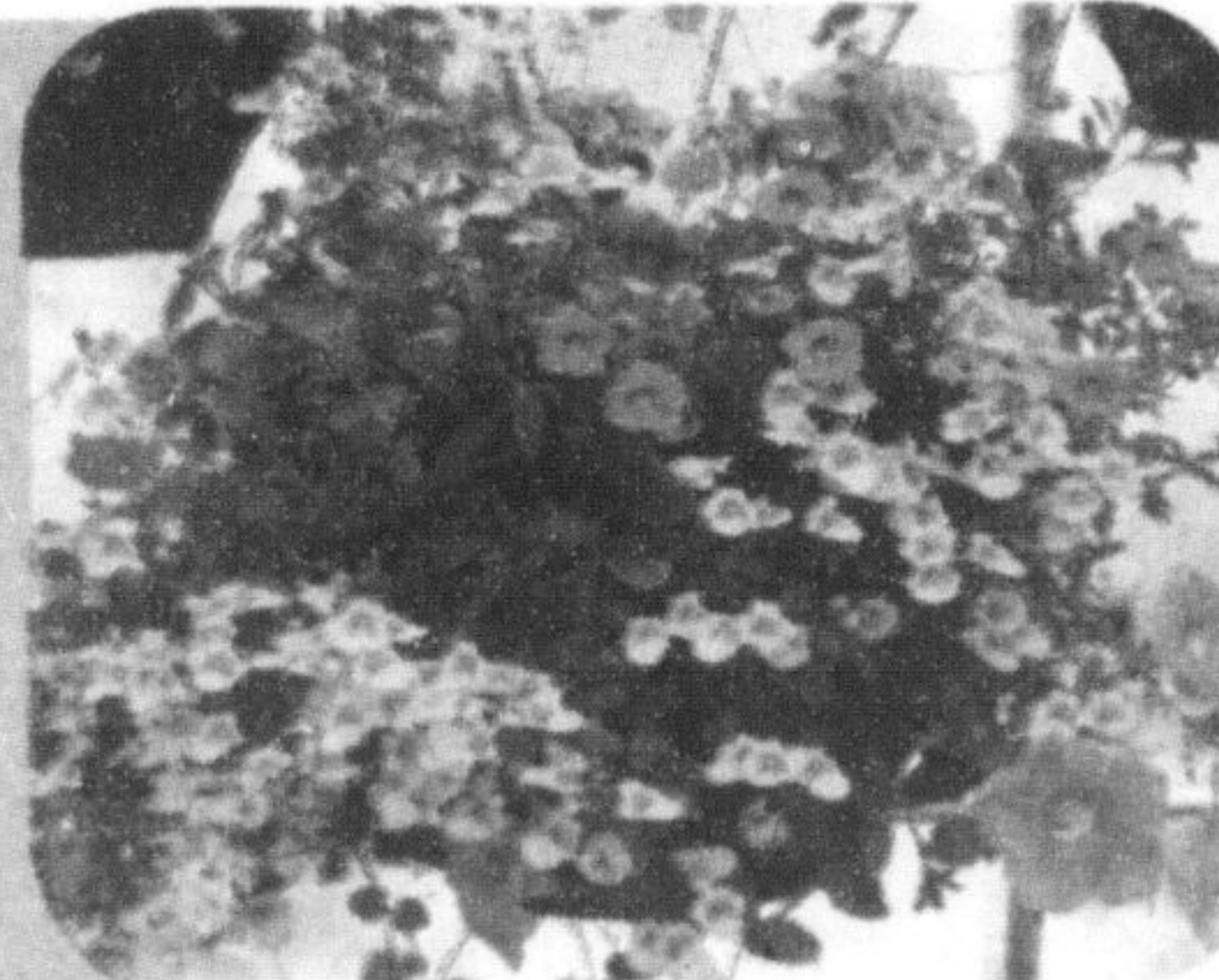
# Taylor Nursery

**30% OFF PERENNIALS**  
This week only until Sunday, June 8th



**TREES & SHRUBS**  
Plant now before summer heat. Deciduous, evergreen for any location!

**BASKETS, PATIO POTS**  
Fabulous colours. Choose from florals or mixed greens.



**WE ARE YOUR COMPLETE GARDENING CENTRE**  
From landscape design to soils & mulch. From annuals & perennials, trees & shrubs, baskets and containers to fertilizers & garden decor. Come visit, browse and get knowledgeable advice from Taylor Nursery!

**MULCH** – pine, composted pine, cedar, red, black, cocoa beans, utility

**NATURAL STONE** – river rock, pea gravel, flagstone, armour, coral, fossil and rockery stone plus sand, screenings, gravel

**SCREENED SOILS** – organic triple mix, top dress.

**Bagged to take home or bulk pickup. Delivery available in Milton area.**

Landscape Consultation/Design by Appointment



I'm Bloomin' Beautiful!



Division of Lawton's Landscaping Ltd.



www.taylorernursery.ca

Escarpment Country TOURISM PARTNER  
Landscape Ontario HORTICULTURAL TRADES ASSOCIATION

For 33 years...Your Town & Country Gardening Centre \* 905.876.4100