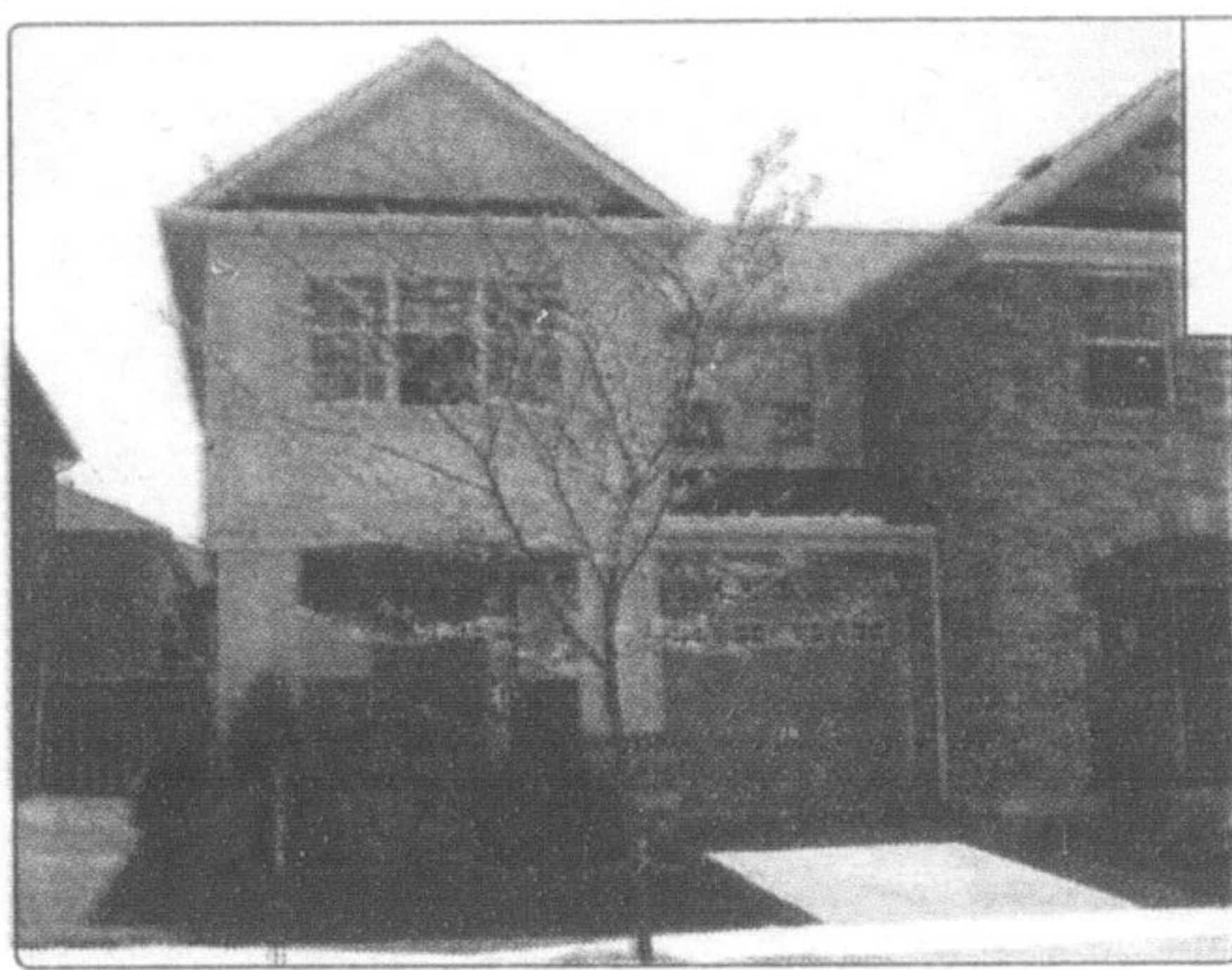


# Weekend SPOTLIGHT



OPEN HOUSE  
SATURDAY, SUNDAY  
MAY 31, JUNE 1  
1-4 PM  
1127 KELLY GATE

Beautiful end unit freehold townhome located in a high prestigious area, hardwood flr, great bright family room, huge kitchen with eaten area, 3 bedrooms, 3 washrooms, R/I cvac, very clean must see.



Century 21

CENTURY 21 ASSOCIATES INC.  
Sam Megally, Sales Rep. (905) 279-8888

OPEN HOUSE  
SATURDAY, MAY 31  
2 - 4 P.M.  
468 WILSON ST.,  
EDEN MILLS

401 West to Guelph  
Line North to  
Eramosa St. East



## COUNTRY BUNGALOW OPEN HOUSES

Reduced \$579,000

**.75 ACRE BUNGALOW WITH IN LAW SUITE**  
15 min to 401, 2400 sq ft. Circle paved driveway, 2 car oversized garage/workshop, massive open concept with cathedral ceiling from kitchen to family rm, modern eat in kitchen with island & W/O to large deck, 3+2 bedrms, sep entrance complete large in law suite, fin W/O bsmt, oak floors. SHOWS 10+. SEE MORE PHOTOS [www.chrisdosne.com](http://www.chrisdosne.com)

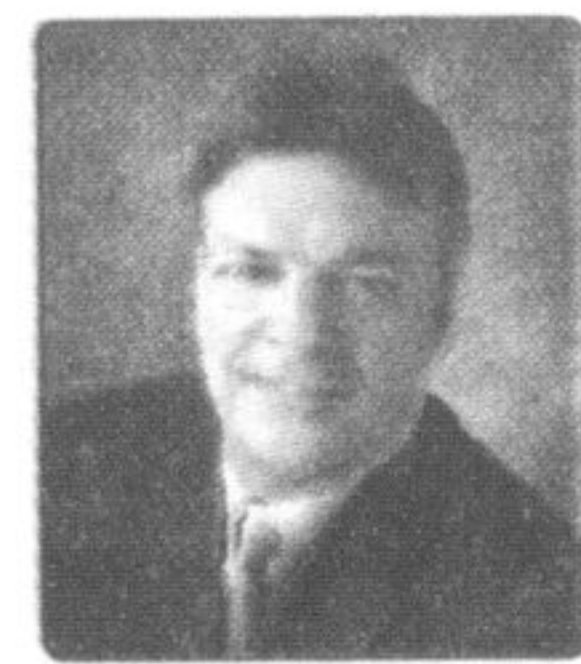


Reduced \$669,000

**2 ACRE BUNGALOW WITH POOL**  
15 MIN to 401, Custom Royal Built Home. Private forest w/ hiking trails, 2 car side garage, long paved driveway, pool w/deck, pond, gazebo, 2,300 sq ft approx., 3 bedrms, new modern kitchen w/hardwood. Family rm w/gas fireplace & huge windows. Dining with bay window, new bathrms & roof, partial fin. basement. SHOWS 10+ SEE MORE PHOTOS [www.chrisdosne.com](http://www.chrisdosne.com)

OPEN HOUSE  
SUNDAY, JUNE 1,  
2 - 4 P.M.  
13079 4TH LINE,  
MILTON

401 to Guelph Line  
North to 25 Sider.  
East to 4th Line  
North



Century 21

CENTURY 21 MILLENNIUM INC., BROKERAGE CHRIS DOSNE, Sales Rep. 1-888-450-8301



KAREN PAUL  
Sales Representative  
Office: 905-634-7755



ROYAL LEPAGE  
BURLIAR REAL ESTATE SERVICES  
INDEPENDENTLY OWNED AND OPERATED BROKERAGES



NEW OFFERING!

\$992,700

### TUCKAWEE ESTATES IN THE HEART OF CARLISLE

Set on .74 acres with complete privacy. 3 plus 2 bedrooms, 3.5 baths, 12 foot ceilings on main lvl. In-law potential with separate W/O. You will buy this one!



\$1,170,000

### A MAGNIFICENT ENCLAVE OF MILLION \$\$\$ HOMES

Superbly designed ranch with great appeal. Beautiful 3 bedroom + den home sits on 5 acres. Vaulted ceilings/hardwood floors/cooks kitchen. This is perfect for you - 905-634-7755 MLS H285832



\$1,399,000

### IN THE LITTLE TOWN OF KILBRIDE

Warm and charming home on 5 acres with 4000 sq ft of fully finished living space, located on an exclusive Brantaven trail, steps to elementary Kilbride school. Luxurious master white marble ensuite, adjoining a dressing room, walkout to your private ingrd pool and estate property. To view call Karen Paul 905-634-7755 MLS H282325



MARK S. IANNI  
Salesperson

416-966-0300  
Direct:  
416-892-0005

Sutton  
GROUP  
ASSOCIATES REALTY INC.,  
BROKERAGE



OPEN HOUSE - SAT 2-4 PM & SUN, 12-2 PM  
13640 GUELPH LINE, MILTON

### STUNNING 8 YR OLD CUSTOM HOME ON PRIVATE 2 ACRE LOT!

Huge gourmet kit w/corain counters, breakfast bar, ceramic floors & back-splash! Bright & airy sunroom opens to the kit & provides access to the backyard! Lrg family rm is warm & inviting with it's fireplace, custom ceiling & new hdwd floors! Bsmt just completed w/unreal theatre/media rm that's fully wired as well as great home gym w/nautilus machines included!! Natural running stream at rear of property! One of a kind backyard w/kidney shaped saltwater inground pool, 16x25 3 level pond w/waterfall, large covered patio w/outdoor kitchen (B/I BBQ, meat smoker & outdoor sink) 14x16 workshop that is any handman's dream! \$569,000



JOIN US FOR  
A BARBECUE 12-5  
THIS SATURDAY &  
SUNDAY!

Rain  
or Shine!

## FOX HOLLOW 1950 SQ. FT. LOT SIZE 50'X150'

- Limited Walkout basements lots available.
- Double paved driveways • Double car garage.
- Only 3 three car garages left!

### Ask About Our \$15,000 Limited Builder's Bonus Package!!

This truly amazing Community consists of 55 Bungalows with 6 different plans. Starting in the \$400s, the property backs onto the Mill Pond, offers walking trails, putting greens and much more. You can still select from all of our glorious standard features with closing dates as early as 60 days to Oct. of this year. Open House this Sat. and Sun. - 12:00 - 5:00 pm. Mon. to Wed. 2:00 - 7:00. For more information call Yvonne at 647-273-4442 or email her at [yvonnemccoll@rogers.com](mailto:yvonnemccoll@rogers.com).

Located 2 minutes north of Hwy 401 on Brock Rd. to Guelph

519-837-2223

1-877- 216-2223



YVONNE  
McCOLL  
Sales  
Representative



[www.meadowsofaberfoyle.com](http://www.meadowsofaberfoyle.com)



PAM  
MARTELL  
Site  
Co-ordinator



To advertise in this feature please call DIANE WOLSTENHOLME at 905-878-2341 ext. 212 email: [dianew@miltoncanadianchampion.com](mailto:dianew@miltoncanadianchampion.com).