

**CANADA'S
FASTEST
GROWING
AUTOMAKER***



THANK YOU ONTARIO SALES EVENT

**YOU HELPED MAKE US THE FASTEST GROWING AUTOMAKER IN CANADA.
WE WANT TO THANK YOU BY OFFERING OUR BEST PRICES EVER!**

Get a Total Canadian Price
Adjustment of up to

\$11,500*

FOR

Our Best Prices Ever^o

2008 DODGE CALIBER R/T

BEST PRICE EVER

★★★★★
NHTSA 5 Star Front and Side Impact[‡]



Fuel consumption rating:
City: 8.8L/100 km (32 mpg)^Δ
Hwy: 6.9L/100 km (41 mpg)^Δ

**CANADIAN PRICE
ADJUSTMENT* OF \$3,750**

**2008 CHRYSLER
SEBRING LIMITED**

**BEST PRICED
MID-SIZE SEDAN**

★★★★★
NHTSA 5 Star Front Impact[‡]



Fuel consumption rating:
City: 12.9L/100 km (22 mpg)^Δ
Hwy: 7.7L/100 km (37 mpg)^Δ

**CANADIAN PRICE
ADJUSTMENT* OF \$5,000**

2008 JEEP PATRIOT LIMITED

**BEST PRICED SUV
IN CANADA***



★★★★★
NHTSA 5 Star Side Impact[‡]



Fuel consumption rating:
City: 8.9L/100 km (32 mpg)^Δ
Hwy: 7.1L/100 km (40 mpg)^Δ

**CANADIAN PRICE
ADJUSTMENT* OF \$2,250**

**2008 JEEP GRAND CHEROKEE
LIMITED 4X4 DIESEL**

**DRIVE MORE THAN
700 KM WITHOUT
STOPPING FOR FUEL†**

★★★★★
NHTSA 5 Star
Front and Side Impact[‡]



**CANADIAN PRICE
ADJUSTMENT* OF \$10,000**

**ALL NEW 2008 DODGE
GRAND CARAVAN SXT**

**CANADA'S #1
SELLING MINIVAN**

★★★★★
NHTSA 5 Star
Front and Side Impact[‡]



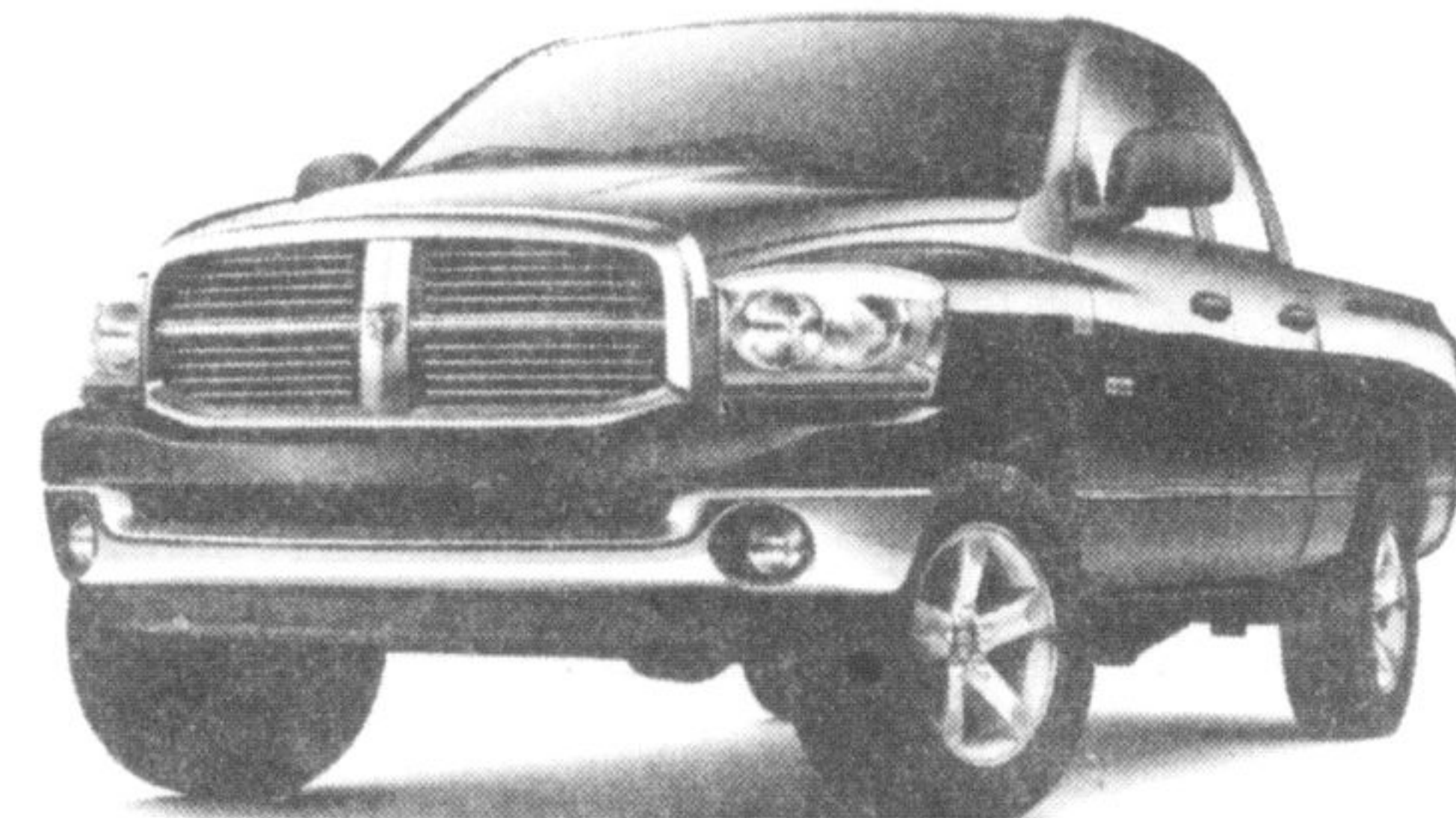
Fuel consumption rating:
City: 13.3L/100 km (21 mpg)^Δ
Hwy: 8.7L/100 km (32 mpg)^Δ

**CANADIAN PRICE
ADJUSTMENT* OF \$6,200**

**2008 DODGE RAM
1500 QUAD CAB®
LARAMIE 4X4**

**BEST PRICED
FULL-SIZE TRUCK**

★★★★★
NHTSA 5 Star
Front Impact[‡]



**CANADIAN PRICE
ADJUSTMENT* OF \$11,500**

ONLY CHRYSLER CAN OFFER YOU 13 VEHICLES UNDER \$20,000!

**COME SEE FOR YOURSELF WHY WE'RE SETTING THE PACE WITH
21 MONTHS OF CONTINUED SALES GROWTH. JOIN THE DRIVE TODAY!**

**CANADA'S
FASTEST GROWING
AUTOMAKER***

**DODGE
Caravan Kids**

PROUD SPONSOR OF MINOR HOCKEY ACROSS CANADA

chrysler.ca

jeep.ca

dodge.ca

VISIT YOUR CHRYSLER • JEEP • DODGE RETAILER TODAY

VISIT YOUR NEIGHBOURHOOD CHRYSLER, JEEP®, DODGE RETAILER OR CHRYSLERCANADA.CA

Wise customers read the fine print: * These limited time offers apply to retail deliveries for personal use only on selected new 2008 models from participating retailers. Offers subject to change without notice. Canadian Price Adjustment is the total of all manufacturer to retailer and manufacturer to consumer incentives offered on specific models. Certain incentives such as Consumer Cash Discounts and Delivery Allowances are deducted from the negotiated price before taxes. Other incentives consist of rebates which are deducted from the negotiated price after taxes. Certain incentives only apply to vehicles which are leased or financed through Chrysler Financial. Some conditions/limitations apply. Canadian Price Adjustments vary by vehicle. Program ends June 2, 2008. See your participating retailer for complete details. o Best Prices Ever apply to selected 2008 models and include all applicable manufacturer incentives. These are the lowest prices offered by Chrysler Canada Inc. since the introduction of these models. Δ Based on 2008 Fuel Consumption Guide ratings published by Natural Resources Canada. Your actual fuel consumption may vary. • Based on Ward's Automotive 2008 segment classification: Small Cross/Utility Vehicle. MSRP pricing as of April 29, 2008. † Details at www.tc.gc.ca/programs. ‡ Based on 2007 Automotive News Lower Mid-Range Sport Utility segment. Actual fuel mileage may vary with driving conditions. ‡ Based on U.S. National Highway Traffic Safety Administration (NHTSA) scoring system for 2008 model year Dodge Caliber, Grand Caravan and Ram 1500 Quad Cab, Chrysler Sebring Sedan, Jeep Patriot and Grand Cherokee. † Based on 2007 Canadian sales and market share growth. ® Jeep is a registered trademark of Chrysler LLC.

FINANCING PROVIDED BY
Chrysler Financial

