



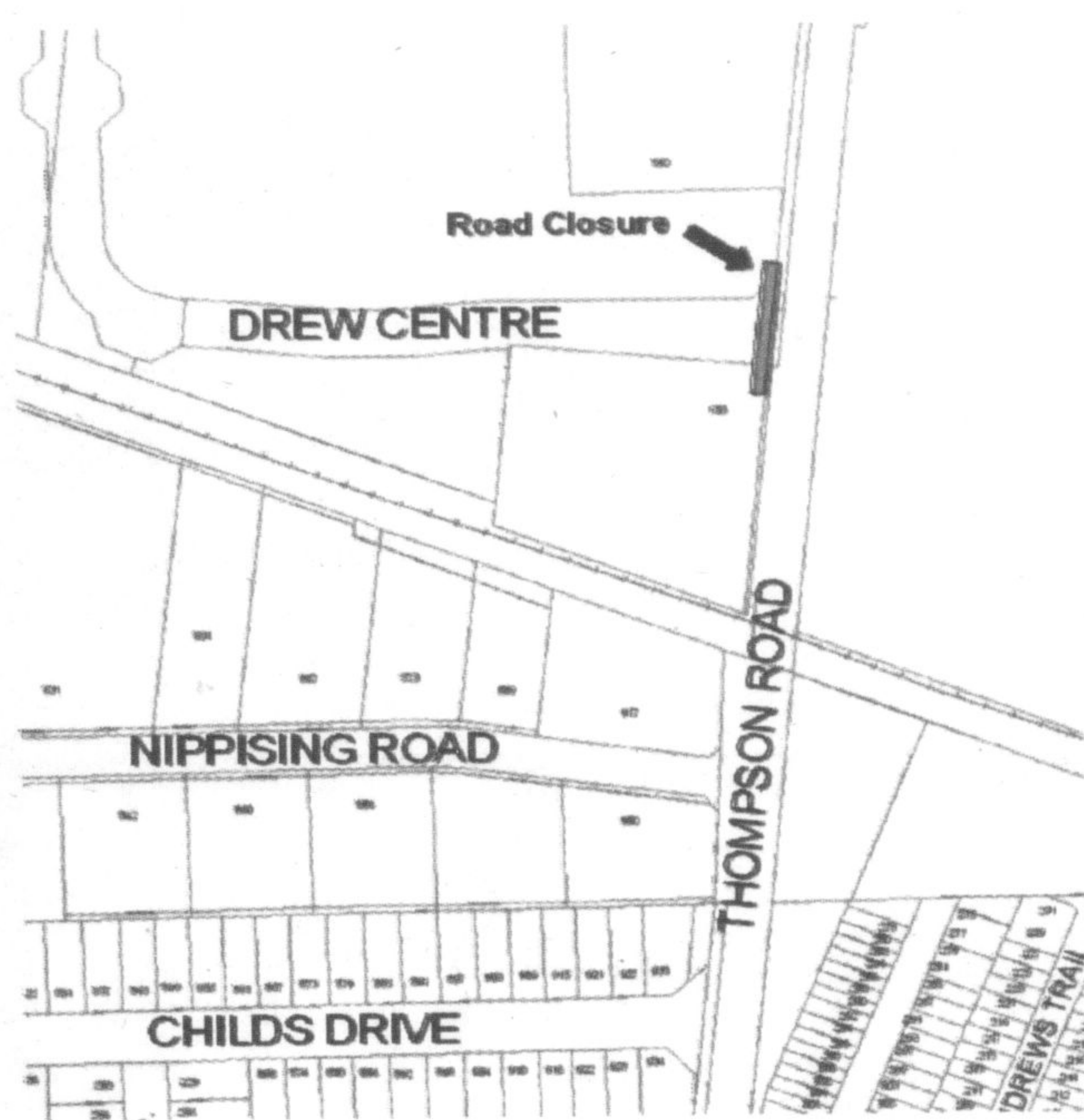
The Corporation of the Town of Milton

905-878-7252 TTY: 905-878-1657
 1-800-418-5494 • Rockwood/Guelph • www.milton.ca

Notice of Temporary Road Closure (Drew Centre at Thompson Road)

As part of the Town of Milton's continuing roads infrastructure improvement program, Engineering Services will implement a temporary road closure of Drew Centre at Thompson Rd. The closure is required to facilitate road reconstruction. Access to all properties and businesses will be from Main St. East and entrances located between Drew Centre and Main St. East.

May 12 2008 - May 14 2008



For further information, please contact the undersigned:

Rick Tipping, C.E.T., Coordinator, Infrastructure
 Town of Milton, Engineering Services
 43 Brown Street, Milton, Ontario, L9T 5H2
 Phone: (905) 878-7252 ext. 2513
 Fax: (905) 876-5029
 e-mail: rick.tipping@milton.ca

National Access Awareness Week Celebration



The Town of Milton is hosting this event to promote access for all persons with disabilities, including mobility, sensory, non-visible and intellectual disabilities. Families, siblings and caregivers are welcome and are encouraged to participate in this free event.

Saturday, May 24

Take part in this event and enjoy a day of fun for the whole family.

Milton Sports Centre, 605 Santa Maria Blvd.

- 1:00 - 4:00 pm Showcase of disability-related agencies
- 1:00 - 2:00 pm Sledge hockey demonstration game, puck drop by Mayor Gord Krantz
- 2:00 - 2:30 pm Sledge hockey public participation
- 2:30 - 4:00 pm Special needs skate

Milton Leisure Centre, 1100 Main St. East

- 4:00 - 5:30 pm Special needs swim

www.milton.ca 905-878-7252, ext. 2534

Notice of Surplus Lands

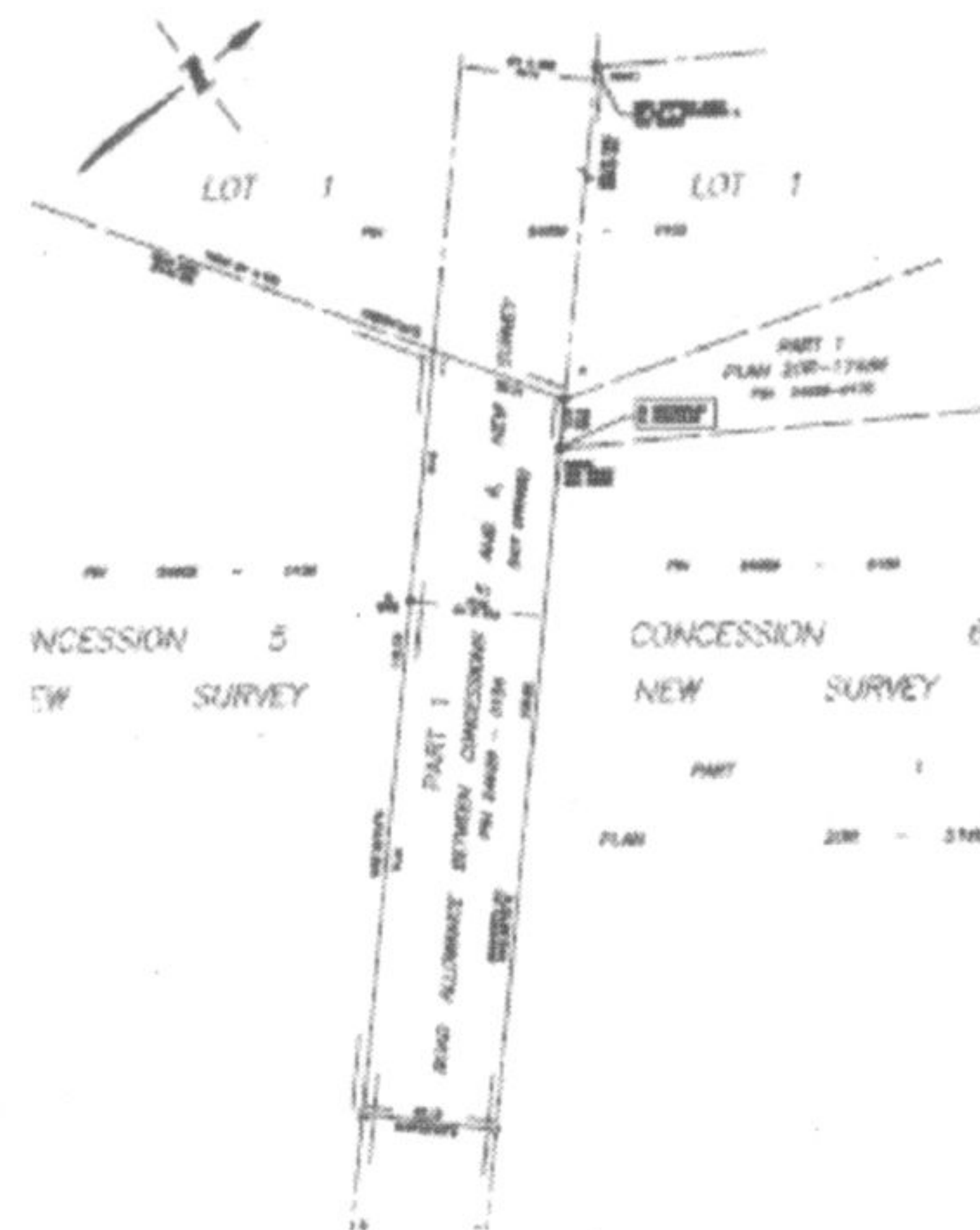
Notice is hereby given that the Council of the Corporation of the Town of Milton has declared Part 1 on the draft registered plan below as surplus to the Town's needs. This declaration is resulting from the construction of a new bridge across 16 Mile Creek at Lower Base Line. The Town is exchanging land in order to complete the project.

This notice is provided in accordance with Town of Milton Property Disposal By-law No. 34-95.

Further information with respect to the aforementioned Notice may be obtained from the Deputy Clerk, Town of Milton, 43 Brown Street, Milton, Ontario (905) 878-7252, extension 2109.

Dated at the Town of Milton this 9th day of May, 2008.

Troy McHarg, Town Clerk
 Town of Milton



Interest for toilet rebate program flooding in

More residents will be able to stop flushing their money down the toilet now that the Region is almost doubling the budget for its residential toilet rebate program.

At its meeting Wednesday, regional council approved an extra \$102,580 for the program that offers rebates of \$60 or \$75 — depending on the toilet — to homeowners who purchase high-efficiency models that save on water.

The move comes in response to what Region staff says has been an "overwhelming" response to the program, which was launched late last year.

The 2008 program designated 790 rebates for Halton Hills — which has wastewater capacity limitations — and an additional 790 rebates for the rest of the region.

While only 43 rebates have been claimed in Halton Hills so far, 605 rebate requests have come from the other three municipalities.

Staff anticipates that rebate funding for Milton, Oakville and Burlington will be exhausted any day now, so it recommended council approve the budget increase to bring an additional 1,420 rebates on board.

This means there'll be a total of 3,000 rebates available this year.

The Region plans to develop promotional material targeting Halton Hills residents with the hopes of reaching the target of 790 rebates.

The extra money for the program is coming from the Region's rate stabilization reserve fund.

According to the Region, those who replace their toilets can save about \$27 annually on their water bill.

For more information on eligibility for the rebates and application forms visit www.halton.ca.

2008 Nissan Altima 2.5S

2.5L 4cyl 175hp engine, cvt automatic transmission, intelligent push button key. Remote entry, side air bags, side curtain airbags, air conditioning, power windows/locks, AM/FM, CD stereo, etc

\$21,998 CVT Automatic Transmission



0.9% Financing
 up to 60 months

*Price excludes freight, (\$1,300) Sec. reg. fee, paint charge (if applicable) taxes, lic.

Milton's
NORTH END NISSAN LTD.

610 MARTIN STREET, MILTON
 905-878-4137

SALES DEPT. HOURS:
 Mon.-Thurs. 9:00 - 9:00
 Fri. 9:00 - 6:00
 Sat. 9:00 - 5:00



www.nissan.ca



SHIFT