

Weekend SPOTLIGHT



BILL CURRIE
*Sales Rep.

Direct:
905-878-4944
Office:
905-878-7777

www.billcurrie.com



**OPEN HOUSE
SUN 2-4PM
321 MCNABB CRES**



NEW PRICE!

Located in a low traffic area on a private 50 X 120' lot, this immaculate home is within walking distance of schools & parkland. Other features include 3 bedrooms plus Nursery, 2 washrooms, separate DR, formal LR with w/o to large deck, bright eat-in Kitchen, A/C, & finished Lower Level. Close to Go Transit & Hwy. 401. Call Bill to view!!

Asking \$354,900.



SMALL COMPLEX!!

Spacious 4-bedroom home in low traffic area. Combination LR/DR, eat-in Kitchen, Walkout from LR. Finished basement with washroom. Electrical Panel ('05), Furnace ('06), A/C ('97).

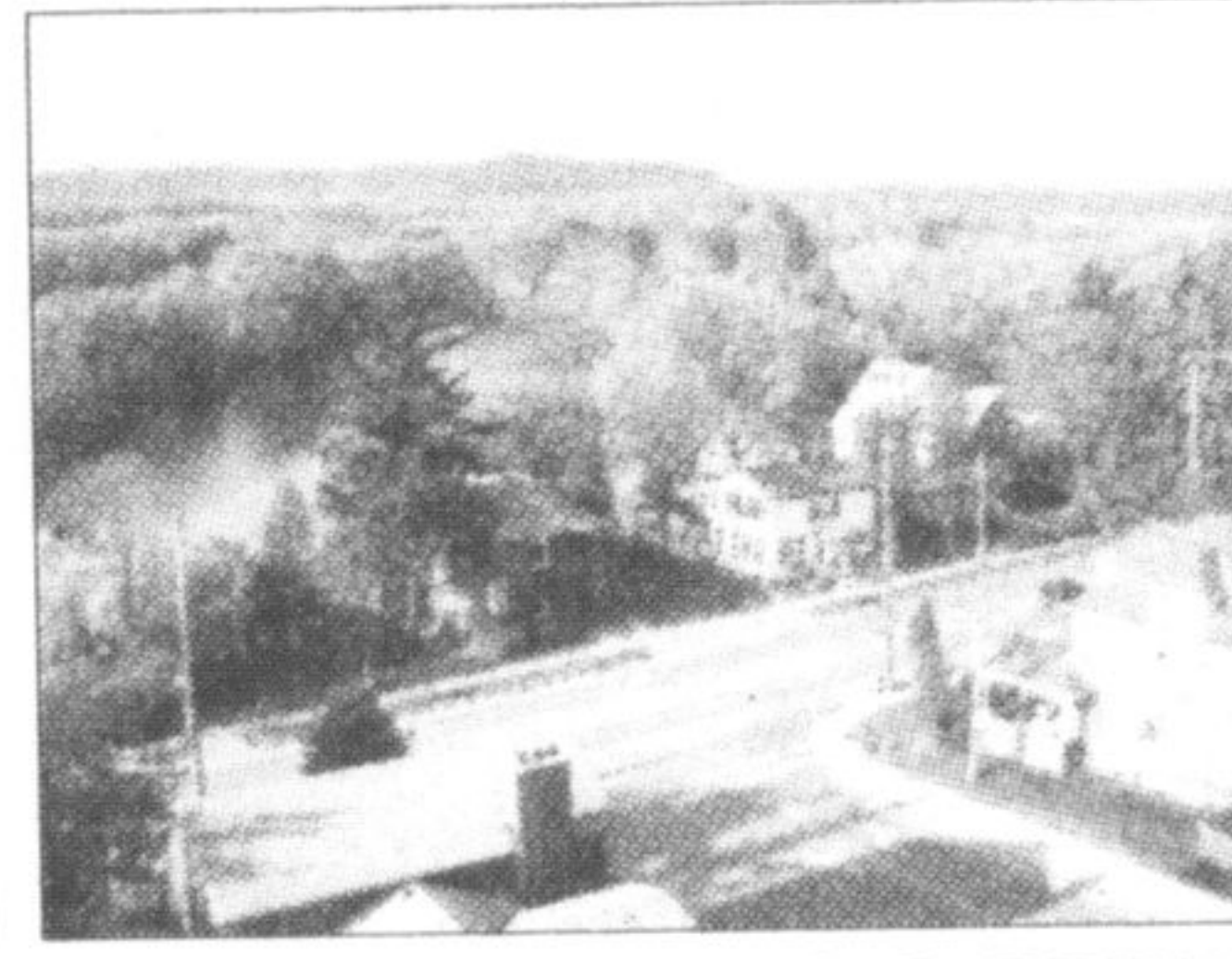
Yours for \$221,500.



UPGRADED BUNGALOW!

Attractive 3-bedroom charmer on a huge 60' X 120' lot. Eat-in Kitchen, combo LR/DR, finished RR with FP, Games Room, extra bedroom, & 3-pc. washroom. Windows ('05), Furnace, A/C, & shingles ('01). Hot Tub & Deck. Call Bill to view!!

Yours for #329,900.



FLEXIBLE CLOSING & PRICE

Great Condo with 2 bedrooms, 2 baths, combination LR/DR, large eat-in Kitchen, indoor parking space. All with a panoramic view of gardens, Mill Pond, the escarpment, and downtown Milton. Pool & exercise room. Was \$286,900 -

**Was \$286,900.
Now offered at \$276,900.**

**OPEN HOUSE
SUN 2-4PM
357 PETTIGREW TRAIL**



HAS ALL THE I WANTS!

Gorgeous home with numerous upgrades. Professionally landscaped. Large deck off kitchen. Lower level finished. Not far from schools, shopping & highways... A must see!! Also includes microwave, washer, dryer, TV in master bedroom. Call Bill to view!!

Asking \$334,900.



Sondra East

Sales Representative
905-878-8101

Direct: 647-895-5399

ROYAL LEPAGE

Meadowtowne Realty, Brokerage
Independently Owned and Operated

No matter what direction you are going, EAST will bring you home!

**OPEN HOUSE SAT & SUN 2-4
1219 MCMULLEN CRES.**



\$418,800

NEW LISTING!

Newer All Brick 4 Bedroom Detached Home on Quiet Crescent! \$40,000+++ in upgrades including 9' ceilings, Granite Counters, Hardwood, S/S Appliances just to name a few.



DEBRA TURK

Sales Representative

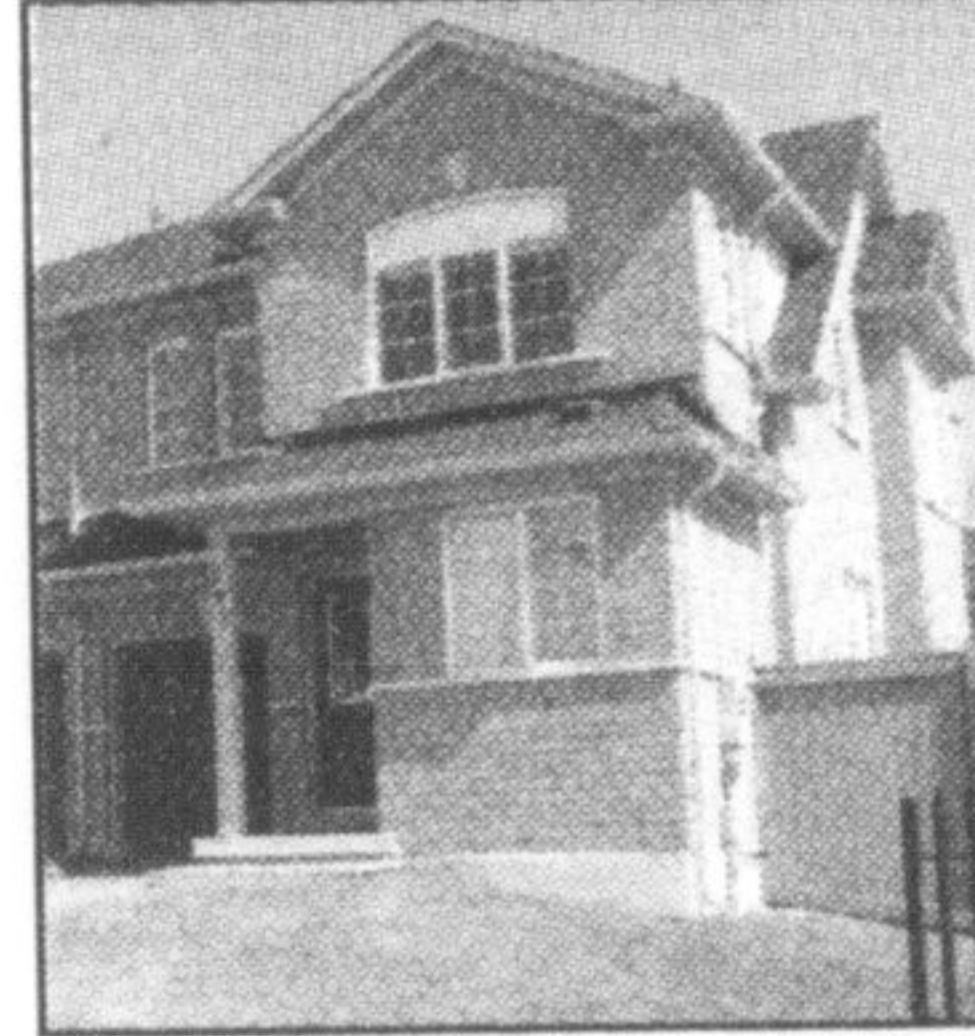
905-878-8101

Working harder for you!



ROYAL LEPAGE

Meadowtowne Realty, Brokerage
Independently Owned and Operated



**OPEN HOUSE
SUNDAY
2:00-4:00pm
208 Pettigrew Trail**

FINISHED BASEMENT

BEAUTIFUL GREEN PARK SEMI

Impressive three bedroom semi close to shopping, schools and parks. Features include hardwood and ceramic floors on main level, large eat in kitchen with sliding patio doors to oversized back yard. Big master with ensuite with corner soaker tub and ceramic floors. Finished basement and upgraded side exterior from builder with extra windows. All decorated in neutral paint tones. Lots of parking. Call Debra today to book a showing. Was \$312,900. NOW 309,900!



BOB PRIDHAM
Broker/Manager

Office: 905-693-9575

1-877-487-5833

bobpridham@
realityexecutives.com

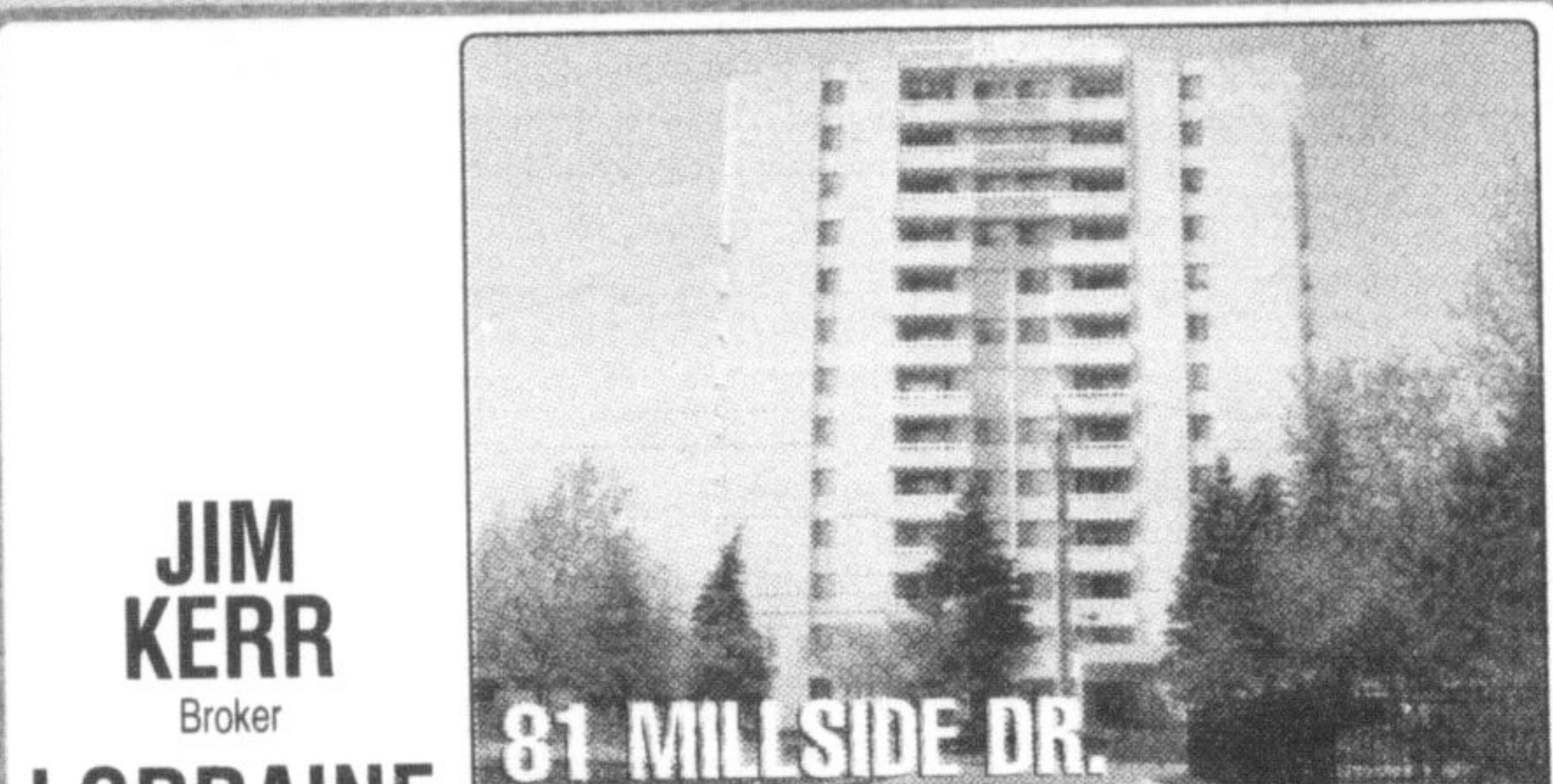


Plus Ltd. Brokerage



**JUST WEST OF MILTON
EXECUTIVE ESTATE**

All the luxuries with small town environment. On a court with one acre treed & landscaped lot. Brantaven built 3400SF. Custom Barzotti kitchen with granite counters/ dark cherry cupboards/maple hardwood. Many windows (some 2 storey) make this a very BRIGHT house. 4+1 bedrooms, finished bsmt & great neighbours. See more pics at www.bobpridham.com or call Bob for your private viewing.

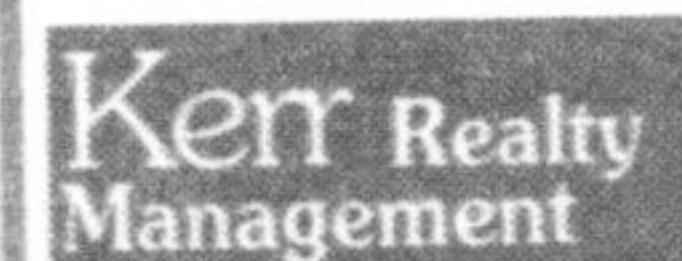


JIM KERR
Broker

LORRAINE KERR

Sales Rep.

905-876-0407



81 MILLSIDE DR.

3 BEDROOM CONDO APARTMENT

- Downtown Milton - Close to everything: churches, schools, shopping, parks & Millpond, etc.
- 2 parking spaces & locker.
- Ensuite laundry & many upgrades.
- Balcony overlooking Millpond & Escarpment.
- Large party room with full kitchen facilities.

For more information or to view,
call Jim or Lorraine Kerr at 905-876-0407.



BRIGID CHAN

Sales Representative
905-270-2000

brigidchan@trebnet.com

www.brigidchan.com



RE/MAX PERFORMANCE
REALTY INC.,
BROKERAGE



\$399,900

**BEAUTIFUL ENERGY STAR DETACHED
IN GREAT CHILD SAFE QUIET CRT!**

4 Bdrms / 3 Washrms. Less Than 1 Yr New, Spacious Sun Filled & Open Modern Layout, Large Eat-In Kitchen W/Breakfast Area, Master Bdrms Full Sized Ensuite + W/I Closet, Large Window & 3 Pc. R/I Washrm In Good Sized Bsm, Dble Garage Inside Access, Great Location! Mins To Oakville & Miss. Call Brigid Now. MLS# W1334008.

"Expect MORE From The Dan Cooper Team"

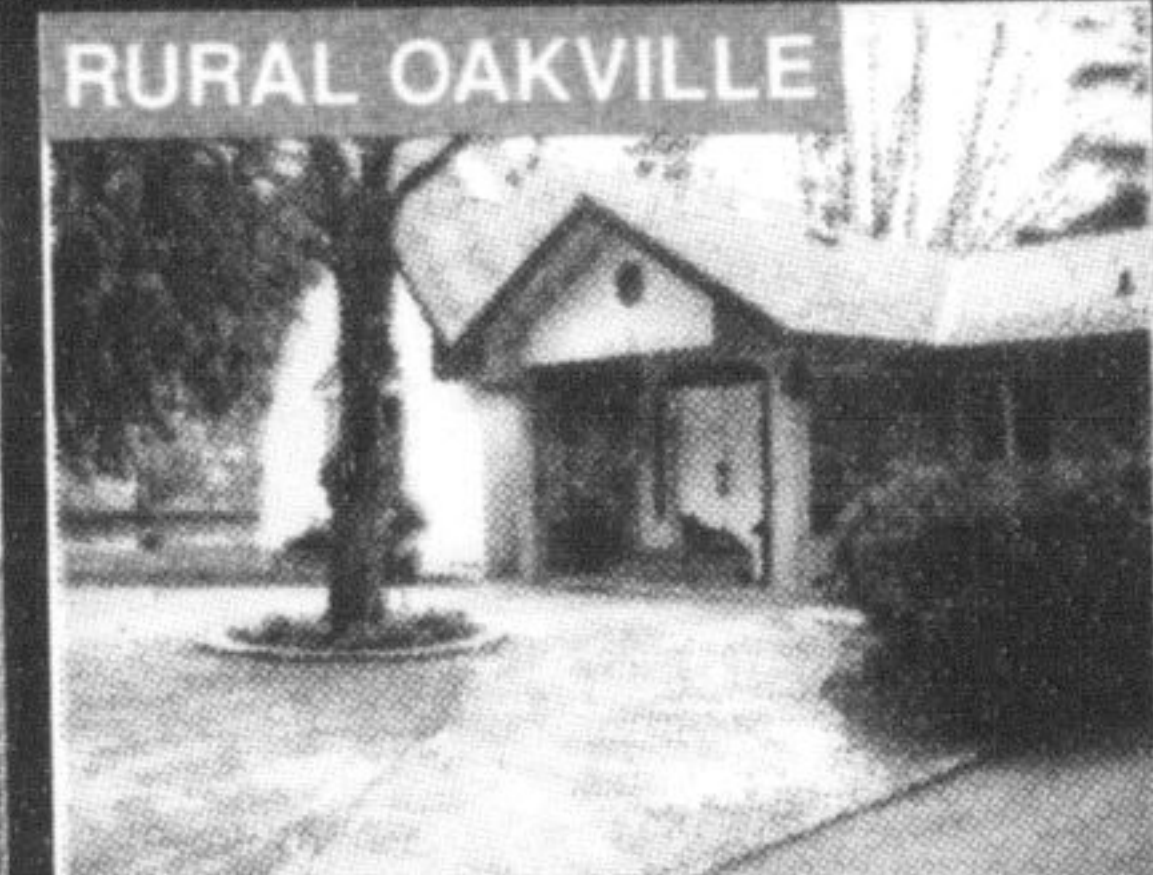


**MORE Service.
MORE Exposure.
MORE Results.**

**Direct
905-849-3303
Office
905-338-3737**



\$1,998,000
Exclusive gated community. Prime lakefront lot. Approx. 7,000sf of upscale living space on 3 levels. Inground pool, hot tub, private beach.



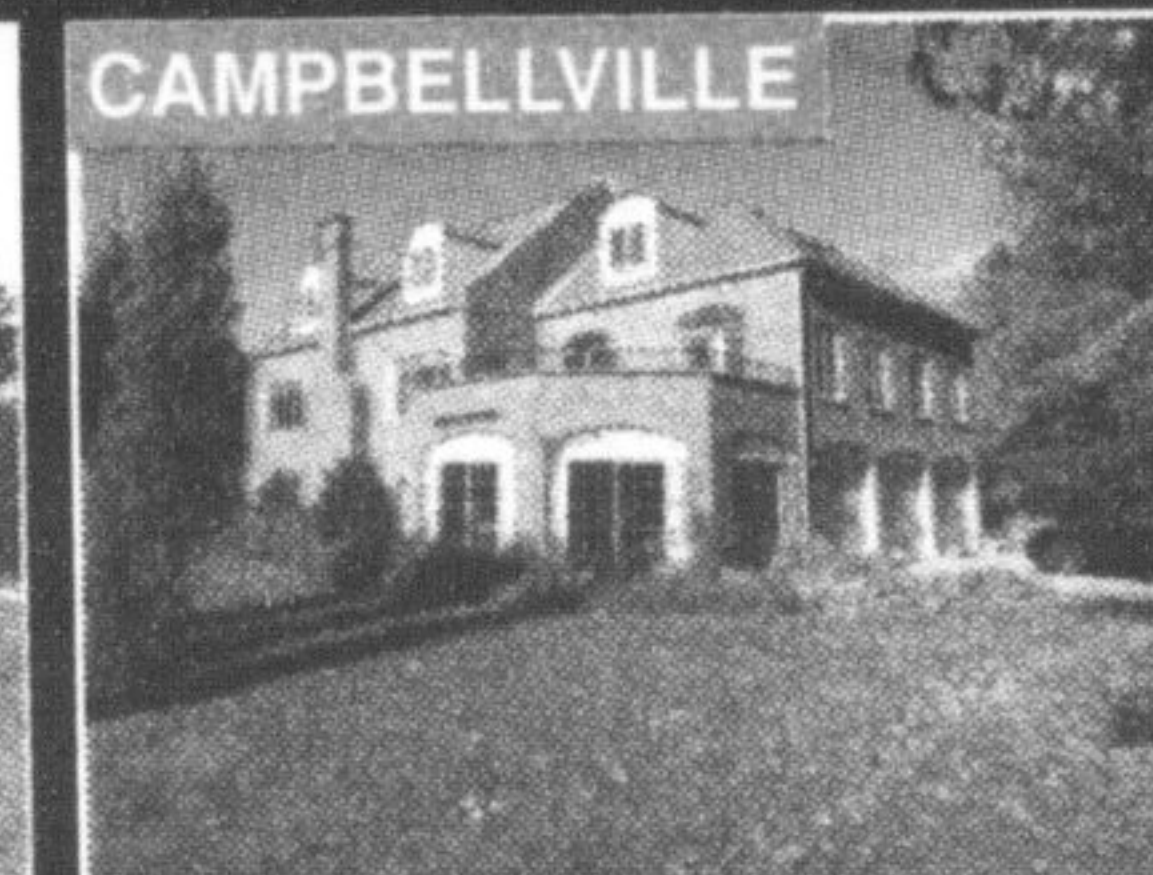
\$1,398,000
Custom built bungalow on a two acre parcel with skylights, 3 FP's, 3 large BR's, 4 1/2 baths, inground pool, circular drive, gated entry & more!



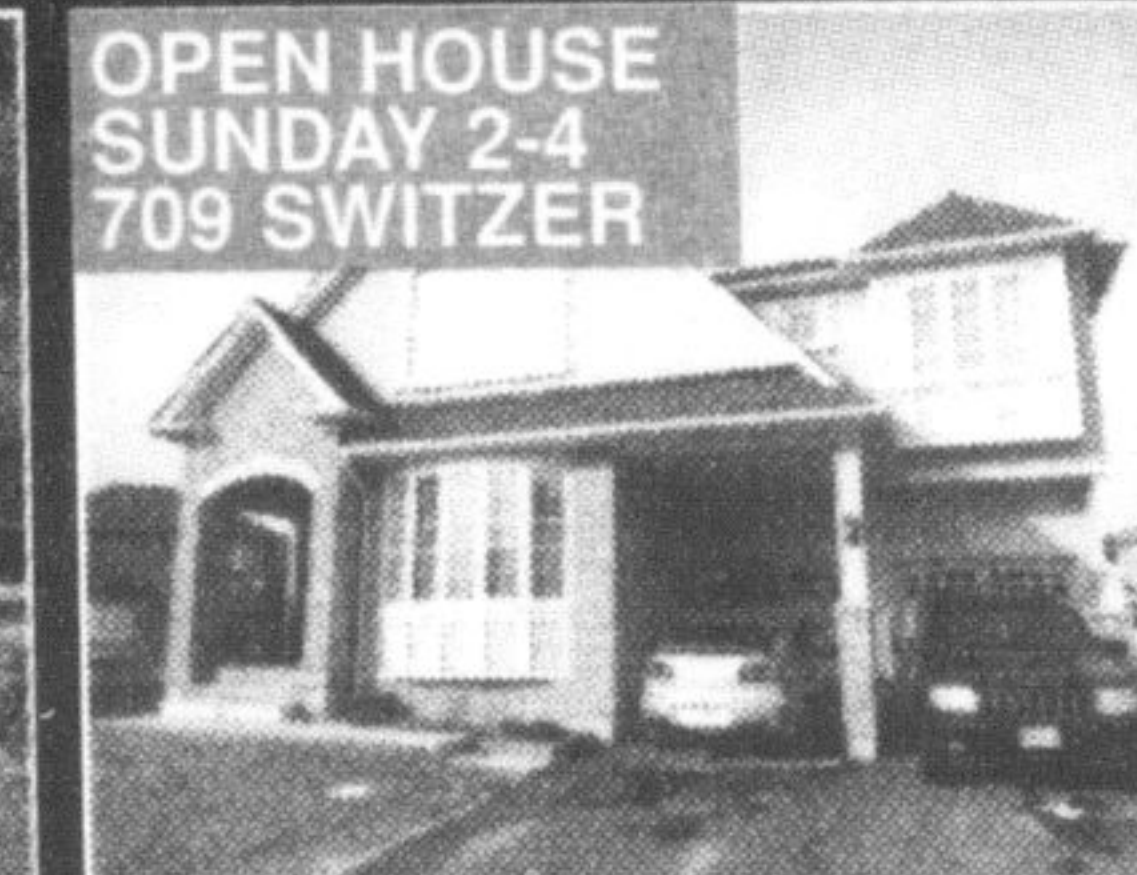
\$1,239,000
Fabulous executive residence in the Churchhill Estates backing onto woods! Serene living in the country. Approx 4,400 sf on 3 levels. Inground pool, cabana & more!



\$1,190,000
Custom built "Marlar Homes" executive on 1.67 acres. Great rm has 18ft ceilings w/ custom b/i's, gas fp, hardwoods, pot lighting t/o, gourmet kitchen.

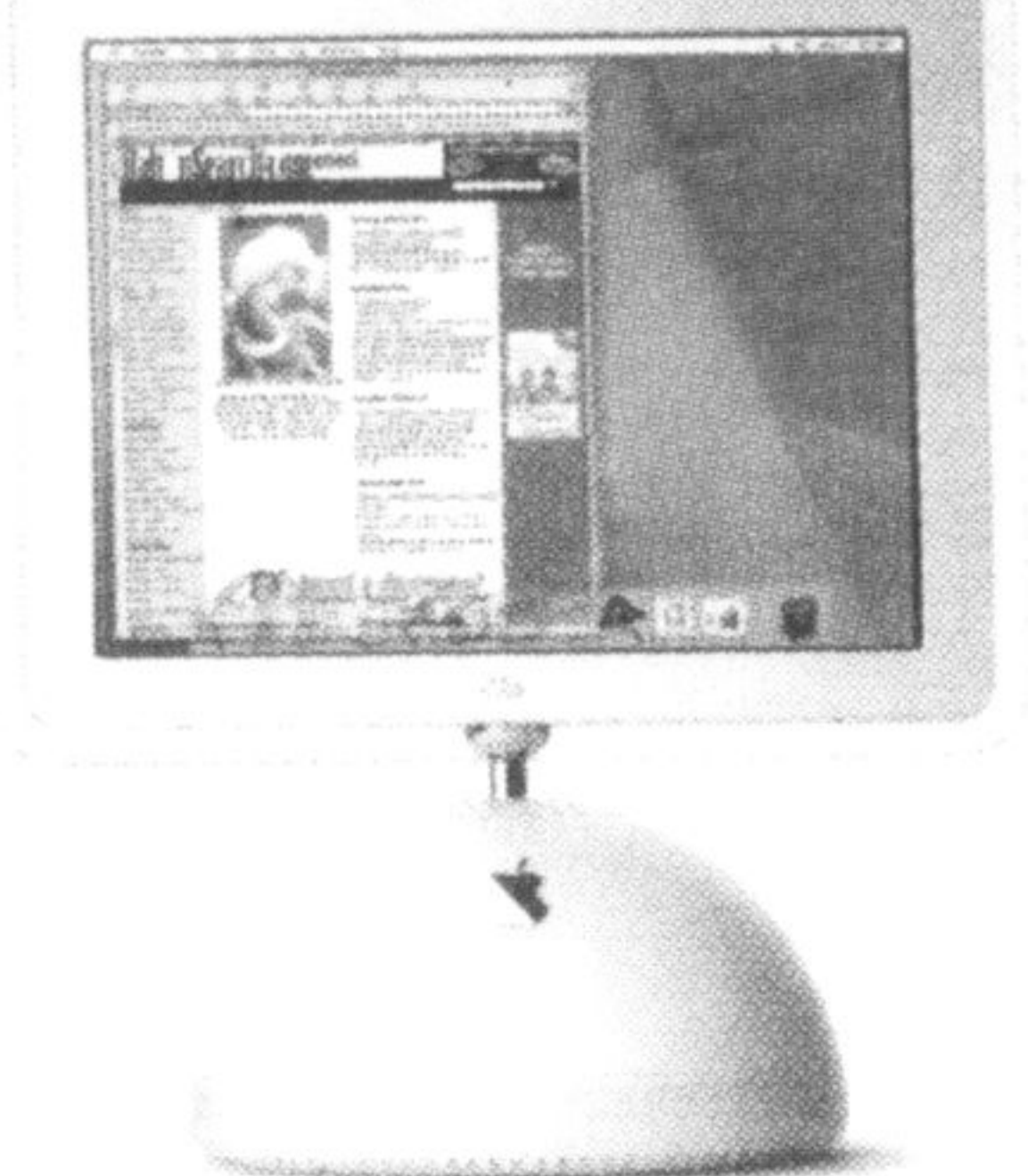


\$989,000
Outstanding 4 BR executive nestled on 1.5 acres. Approx. 3,000 sf w/9 ceilings, gourmet cherry kitchen w/ granite, sun room & more!



\$669,900
Over \$130K spent on upgrades. Granite, hardwoods, built-ins, pillars, maple kitchen, 9' ceilings, den, 5 piece baths & more!

View our complete inventory of listings online at www.dancooper.com



BONUS!
ALL
Real Estate
Ads
appear at...
**www.
milton
canadian
champion
.com**

To advertise in this feature please call **DIANE WOLSTENHOLME** at 905-878-2341 ext. 212
email: dianew@miltoncanadianchampion.com.