

# W.I. Dick set to celebrate 50 years

Calling all W.I. Dick alumni. The Highside Drive middle school is turning 50 this spring, and in honour of the golden anniversary a special open house is slated for next Saturday, May 3. Staff and students are in full swing

with preparations for the milestone celebration, which runs from 11 a.m. to 3 p.m. — with a presentation and cake cutting at noon. The school's bands and spirit squad will be performing, while classrooms will be decorated to reflect different

decades over the past half century. Those planning on attending the festivities are asking to sign up at WID's\_50th@hdsb.ca. Attendees are also encouraged to bring along old photos and memorabilia.



GRAHAM PAINE / CANADIAN CHAMPION

**LOADED UP:** Sara Ross-Howe and daughter Ainsley, 5, carry their shopping bags to the parking lot — as well as Ainsley's pink elephant doll — after a morning at the 'Mom to Mom' sale, held recently at the Milton Seniors' Activity Centre. The sale featured everything for moms and moms-to-be, including maternity wear, infant and children's clothing and toys.

## GALLINGER PRE-OWNED

NEARLY NEW, BARELY, RARELY DRIVEN...

GENTLY, SLIGHTLY USED...

CARS, TRUCKS, MINI VANS & SUVs

### 2007 Ford Mustang GT Convertible

4.6L V8, auto, AC, PW, PL, p seat, speed control, tilt wheel, alum wheels, leather seats, only 19,100 kms (former daily rental), balance of factory warranty, vista blue ext. Stk. #2753A



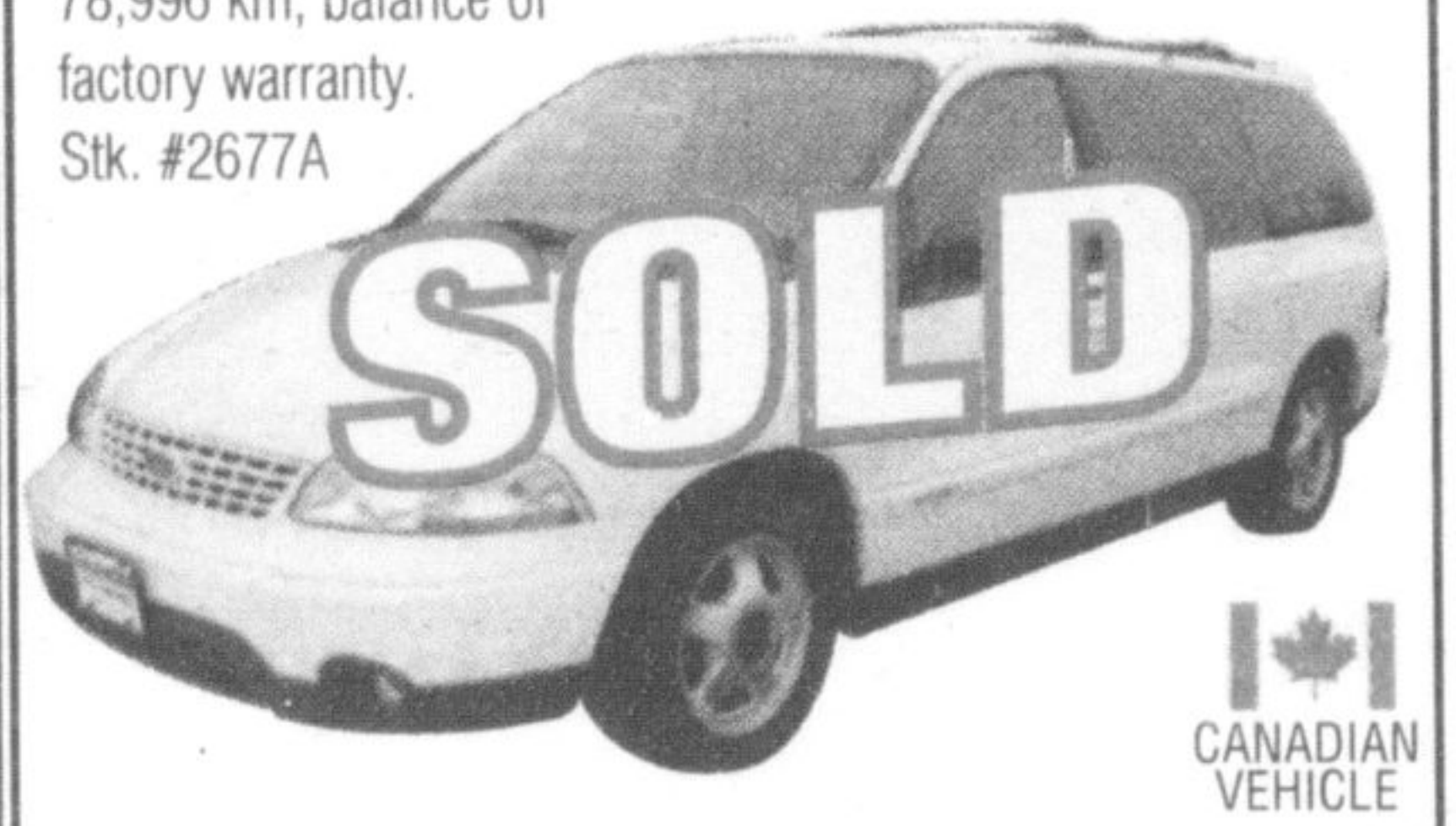
### 2005 Sport Trac 4x2 XLT

V6, auto, AC, PW, PL, alum wheels, moonroof, tonneau cover, 98,947 kms w/ warranty, black ext. Stk. #2740A



### 2003 Ford Windstar Sport

V6, auto, AC, PW, PL, TV, quad seats, white ext, RCC return 78,996 km, balance of factory warranty. Stk. #2677A



### 2003 Ford Escape LTD 4x4

V6, auto, AC, PW, PL, P seat, moonroof, leather seats, silver ext, trade-in 135,705 kms w/warranty. Stk. #S8078A



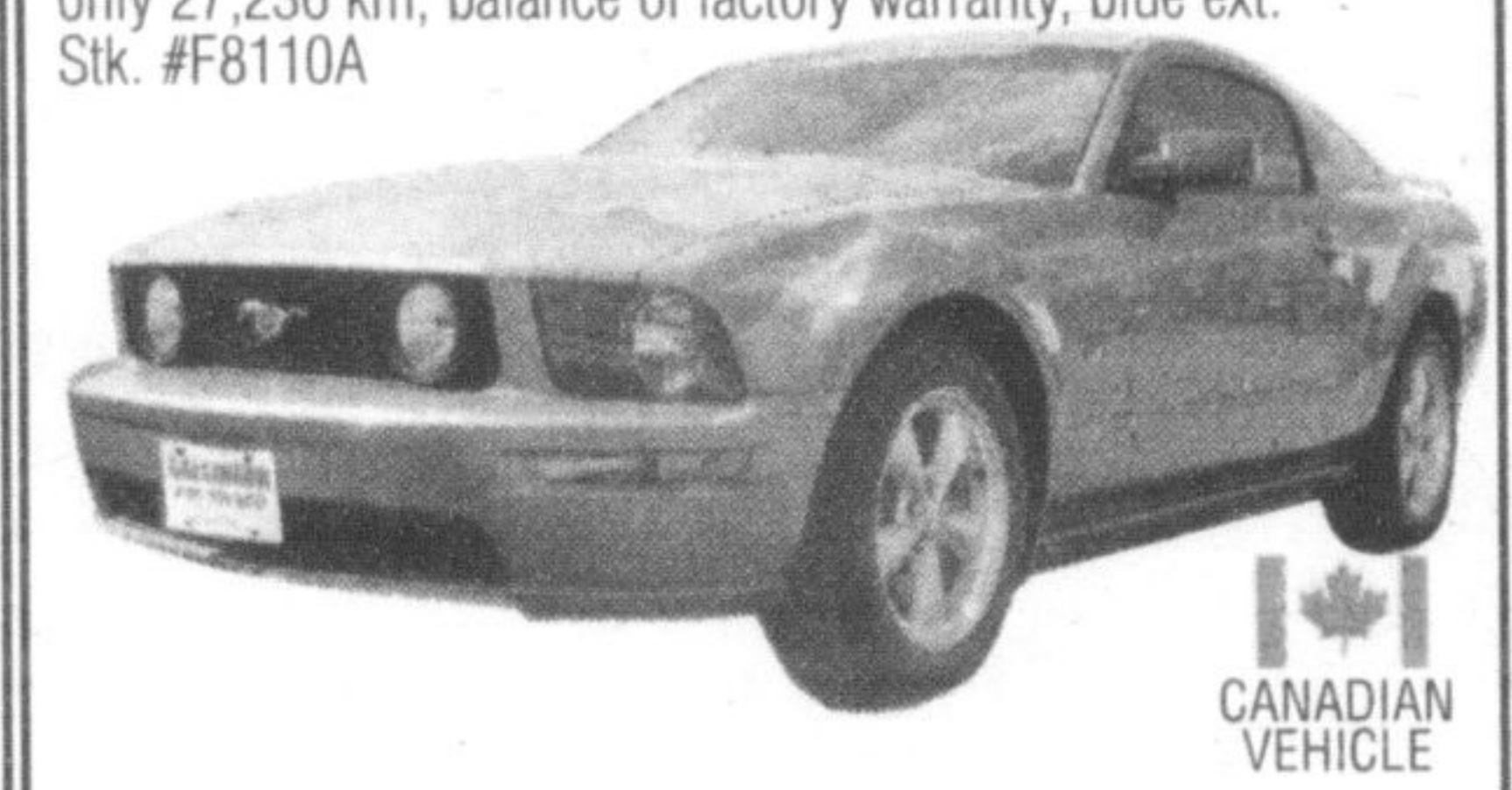
### 2005 Ford Taurus SE 4DR

V6, auto, AC, PW, PL, speed control, tilt wheel, only 23,091 kms, balance of Ford ESP, windviel blue ext. Stk. #2742B



### 2007 Ford Mustand GT Coupe

4.6L V8, 5 spd., A/C, pw, pl, p. seat, speed control, tilt wheel, interior upgrade pkg., side airbags, leather seats, only 27,236 km, balance of factory warranty, blue ext. Stk. #F8110A



### 2004 Nissan Murano

3.5L V6, auto, A/C, pm, pw, pdl, leather, Bose stereo, p. sunroof, alloy wheels, p. seat. Stk. #2704A



### 2006 Ford E-250 Cargo Van

4.6L V8, auto, A/C, PW, PL, speed, tilt, running boards, white ext. Only 10,301 kms. Bal. of Fact. Warranty. Stk 2722A.



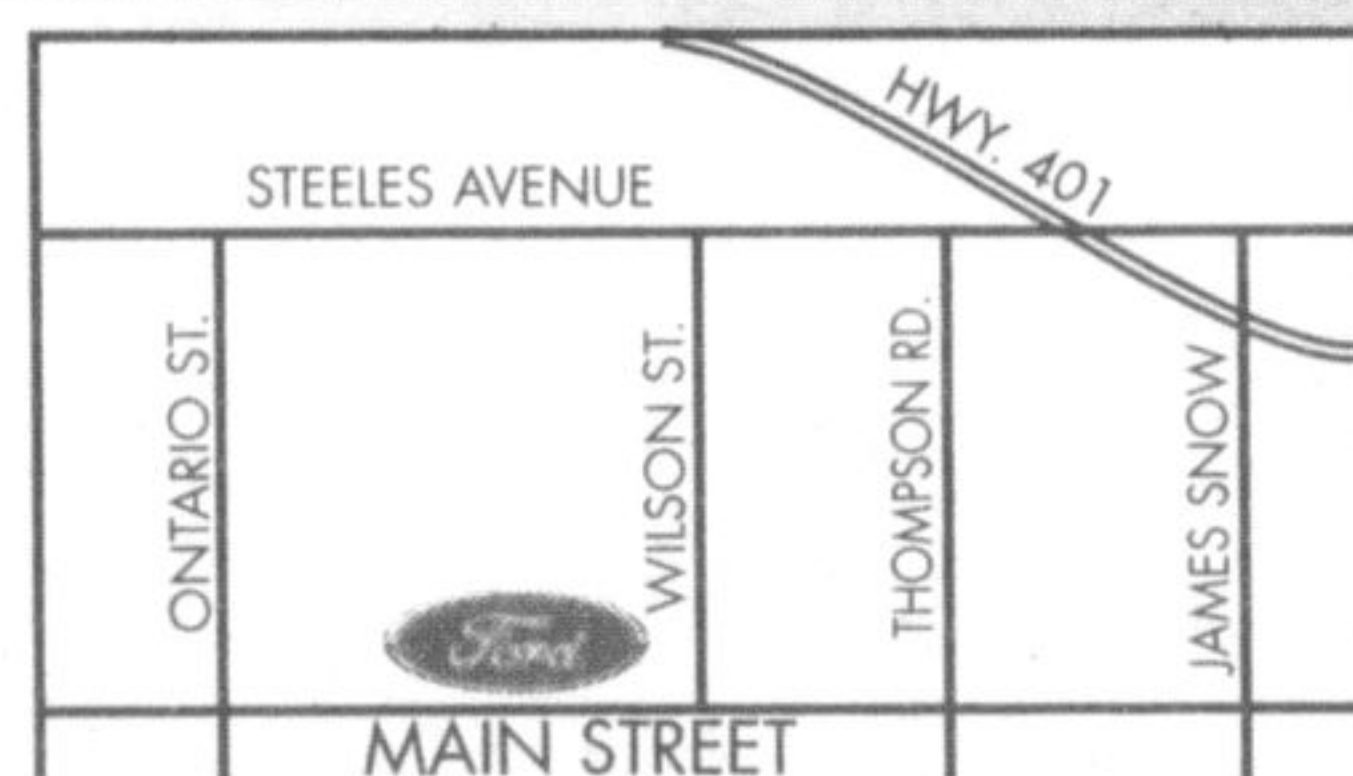
### 2003 Ford F-150 S/Cab Heritage XLT 4X4

5.4L V8, auto, A/C, PW, PL, speed, tilt, alum wheels, two-tone paint, moonroof. Only 72,682 kms with warranty. Stk F8091A



## ALL VEHICLES CarProof VERIFIED

SALES • LEASING • SERVICE • PARTS



 powered by you  
**905 875-FORD**  
www.gallingerford.com



655 MAIN STREET EAST, MILTON, ONTARIO

DIRECT PARTS LINE 905.875.0111



The Rotary Club of Milton presents...

## A MASQUERADE BALL

Saturday, April 26th, 2008

For Tickets email: [tourlady@sympatico.ca](mailto:tourlady@sympatico.ca)

All proceeds will support:

**YAH!**  
Youth After Hours!



- Fully Licensed Child Care
- Ages 6 Weeks to 6 Years
- Care Available 2-5 Days per Week
- Caring ECE Staff
- Arts, Crafts, Computers
- Field Trips, Special Events
- Low Ratio Kindergarten Programs
- Jolly Phonics, Science & Math
- Nutritious Meals and Snacks
- All Natural Cleaning Products

VIDEO OVER THE INTERNET

VOTED BEST DAYCARE

NO APPOINTMENT NECESSARY

DROP IN FOR A TOUR

1120 Maple Ave, Milton

905-693-4873

8611 Escarpment Way, Milton

905-875-2255

**NOW REGISTERING**  
**DROP IN FOR A TOUR**

For more information on any of our 17 great locations

Visit: [www.peekabookid.com](http://www.peekabookid.com)

Call: 1-866-607-PEEK (7335)

"Quality Child Care You Can See!"