

DOWNTOWNE REALTY

MILTON

www.meadowtowne.com

ROYAL LEPAGE
Meadowtowne Realty, Brokerage
Independently Owned and Operated

AMY & DARRYL flowers

WATCH YOUR DREAMS GROW
Sales Representatives

905-878-6232
Direct Line

NEW LISTING



Corner unit semi detached across from the park. Hardwood floors throughout, cozy fireplace, huge eat-in kitchen, fully fenced yard and much much more.

\$369,900

HOT NEW LISTING



Beautiful townhouse in Hawthorne Village. Lots of windows, eat-in kitchen, fully fenced yard, and completely finished basement. A must see!

\$277,900

STUNNING



Stunning 3000 sqft. executive style home that has been fully upgraded with gleaming hardwood floors throughout, 9' ceilings, fireplace, pot lights & amazing chef's kitchen & much more. This home is perfect for a large/growing family.

\$519,900

ACROSS FROM PARK



Stunning Powell model 1990 sqft in a perfect location. Directly across from park, splash pad & school. Parking for 2 cars in long driveway.

\$384,900

TIMBERLEA



Stunning completely renovated family home in Timberlea. Gleaming oak hardwood floors throughout. Completely finished basement for any size family.

\$434,900

LEASE



Beautiful bungalow country living with easy access to town & major highways. Spacious & bright with over 1 acre lot.

\$1,600 per mth.

Sandy Del Papa
AN ACCREDITED "HOME STAGING" PROFESSIONAL

DID YOU KNOW?
A STAGED HOME SELLS FASTER & FOR MORE MONEY

2 NEW MATTAMY 'CROFTSIDE' MODELS

\$303,900 BACKING ONTO OPEN SPACE
Great location - backing onto 'OPEN SPACE', this beauty features extra-long driveway (holds 2 cars), prof. landscaped front yard with interlock steps, gas FP & 4th bdrm, finished on lower level & more.

\$295,900 DECORATOR'S TOUCH
This home exhibits a decorator's touch. Features include extensive hardwood & ceramics, custom leveler blinds, keyless entry from garage & more. If you are a discriminating buyer, this home's for you!

\$299,900 GREAT STARTER HOME
This fully detached (above ground) home is finished top to bottom and has most big ticket items done. If you are in this price range, this is a "must see" before you buy.

\$329,900 HUGE PIE SHAPED LOT
This "open-concept" split level beauty has it all!
• fully detached (above ground)
• formal LR, cozy Fam rm (FP) PLUS rec rm
• shows like a new home (lots of upgrades)
• over 1800 sq.ft. of finished living space
Great Value for the size of lot.
Call Today!

see sandydelpapa.ca
FOR INTERIOR PHOTOS & MORE INFO.

Pat Rideout
SALES REPRESENTATIVE 905-878-8101
email: PatR@RoyalLePage.ca
www.patrideout.ca
Member of both the Oakville-Milton and Toronto Real Estate Board



BEAUTIFUL 1565 SQ FT GREENPARK VELLORE 3

This 3 bedroom semi is situated on a quiet street in a sought after area with easy access to 401 and GO. Open concept with gleaming hardwood floors and ceramics on main level. Moveable centre island in kitchen with walkout from breakfast area. This home is a must see. Listed at \$314,267.



MATTAMY'S POWELL MODEL

Situated on a huge pie shaped lot across from Trudeau Park. This 1900 square foot home features a large eat-in kitchen with a walk-out to the 22x16' deck, inside entry from garage and lots more. Listed at \$399,900.

Call Pat for your personal tour.

EXPECT THE *Royal Treatment*

Top 1% in Canada
JOSEPH BRAZEAU
WWW.MILTON-REALESTATE.COM



Joseph Brazeau, B.A.*



Virginia Brazeau R.N.*



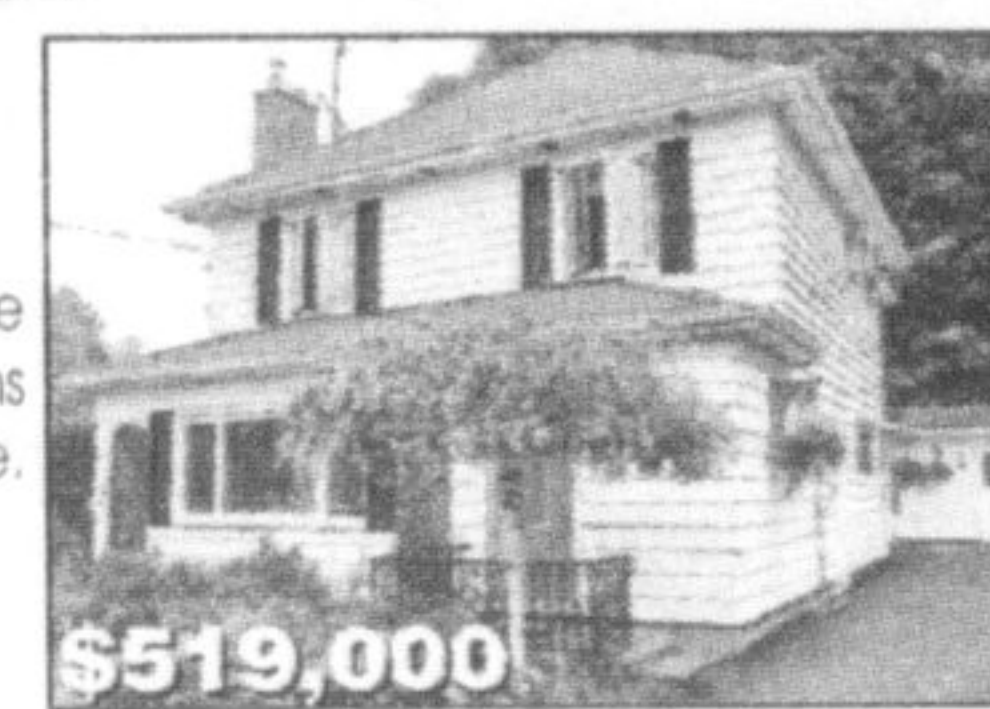
Jodie Near, B.A.*

THE BRAZEAU GROUP
905-878-8101

LOVELY CENTURY HOME

Updated & renovated. Beautiful gardens with mature trees and in-ground concrete pool. Huge kitchen opens to familyroom with granite stone gas fireplace. Separate entry to potential in-law suite.

For further information and photos please visit: Milton-realestate.com

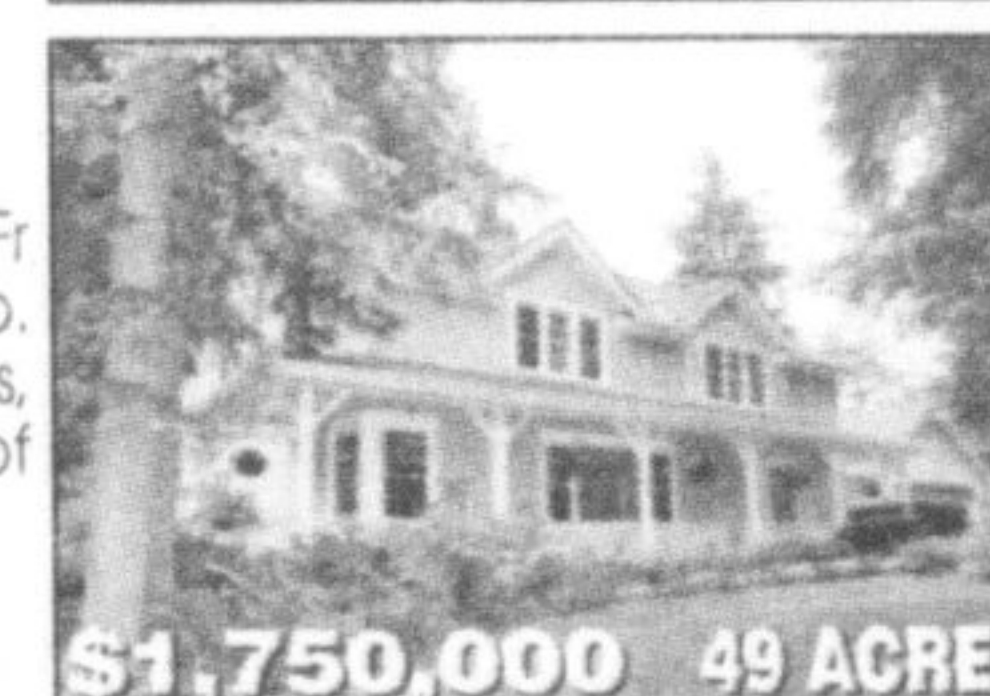


\$519,000

IDYLIC SETTING

Spacious 5-bdrm executive w/gleaming hrdwd, Fr drs, firepl, numerous w/out to deck & patio, 24x18' log cabin, rebuilt 62x48' bank barn w/stalls, 10 fenced pastures/paddocks. On banks of Bronte Creek.

For further information and photos please visit: Milton-realestate.com



\$1,750,000 49 ACRES

BETTER THAN NEW

Dbl door entry leads to this 2 storey, 4 bdrm open concept home. MF lam rm w/ gas fp, separate din. rm, den & open concept kit w/ breakfast bar, upper/lower cabinet lighting and walk out to lg fully fenced yard. MB has 6 piece ensuite and w/closet. 2nd bdrm has a 4 piece semi-ensuite. Complete with all appliances, C/A, central vac, garage door opener and roughed in security system.

For further information and photos please visit: Milton-realestate.com



\$539,000

BUILD YOUR DREAM HOME

Build your "Dream Home" on this .77 Acre building lot in rural subdivision at the south end of Freeiton in an area of executive homes. South side of Highway 97, west of Highway 6. Quick access to Carleton Place, Waterdown, Cambridge, Guelph. Natural gas and municipal water at lot line.

For further information and photos please visit: Milton-realestate.com



\$179,000

HOUSE ON THE HILL

1.85 acres with great views. Fabulous 3800 sq.ft. with \$\$\$ in upgrades and finished basement. Main floor master suite w/ensuite. "Great Room" with vaulted ceiling, large windows & gas fireplace. Gourmet kitchen with French doors to patio, pool and professionally landscaped grounds.

For further information and photos please visit: Milton-realestate.com

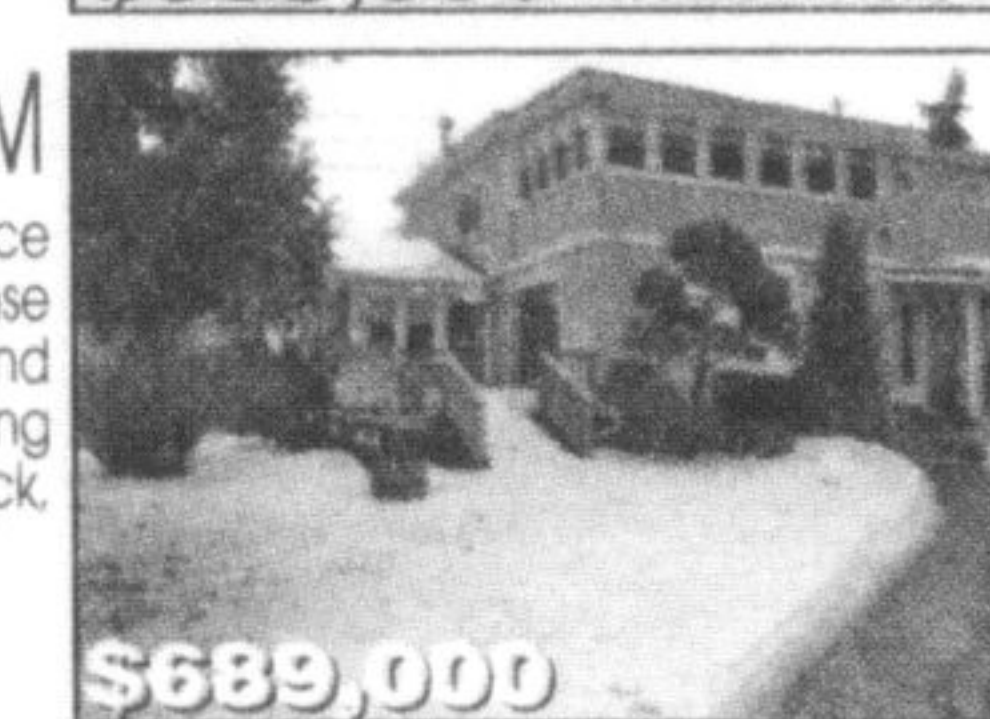


\$898,000

BEAUTIFUL EXECUTIVE 4 BEDROOM

"Century Home" lovingly updated, retaining the elegance of Yesteryear with modern day conveniences. "No expense spared". Steps to schools, Mill Pond, downtown and extensive walking trails. Private Master suite with dressing room, walk in closet and 4 piece bath. Private deck, mature, fully fenced gardens and hot tub. "A Must See"

For further information and photos please visit: Milton-realestate.com



\$689,000

12.18 ACRES

Country Bungalow with complete privacy. Large eat in kitchen. Formal livingroom. Master suite with skylights and ensuite. 32 ft x 23.5 ft barn with loft. Spring fed pond.

For further information and photos please visit: Milton-realestate.com



\$549,000

CUSTOM BUILT

3 acres. Custom built 6,880 sq. ft with pool, spa, lilac grove. Exceptional upgrades. Dream kitchen with state-of-the-art appliances. Main floor master suite. 3 staircases. Gallery overlooking "Great Room". 4 car garage.

For further information and photos please visit: Milton-realestate.com



\$1,665,000 3 ACRES

FREEHOLD TOWNHOME

Approx 1130 sq ft "Mattamy". Tastefully decorated. Walk out from eat in kitchen to fully fenced yard. Professionally landscaped front garden. Master has walk in closet and semi-ensuite.

For further information and photos please visit: Milton-realestate.com



\$274,000

FAMILY HOME

4 Bdrm Family home on quiet street. Huge kitchen/familyroom with fireplace. Fully fenced backyard. Finished basement with recreation room, office and 3 piece bath.

For further information and photos please visit: Milton-realestate.com



\$459,000