

ROYAL LEPAGE
Meadowtowne Realty, Brokerage
 Independently Owned and Operated

ROYAL LEPAGE
MEADOWTOWNE REALTY

905-878-8101
475 MAIN ST. E.,
MILTON
 www.meadowtowne.com



Carole Budworth
 Sales Rep.
 905-878-8101
 carolebudworth@royallepage.ca



\$425,000
HOT OFF THE PRESS
 Executive 2 st., 4 bedroom home in excellent area. 2300+ sq. ft., close to town, close to shopping, go-train, highway access. Formal L.R and D.R., Main floor laundry, inside entry to garage, F. R. with gas fireplace, huge eat-in kitchen, ceramic floors, oak cupboards, C/A. Walk to local schools and parks. Fronts onto wooded area. Call Carole for more details.



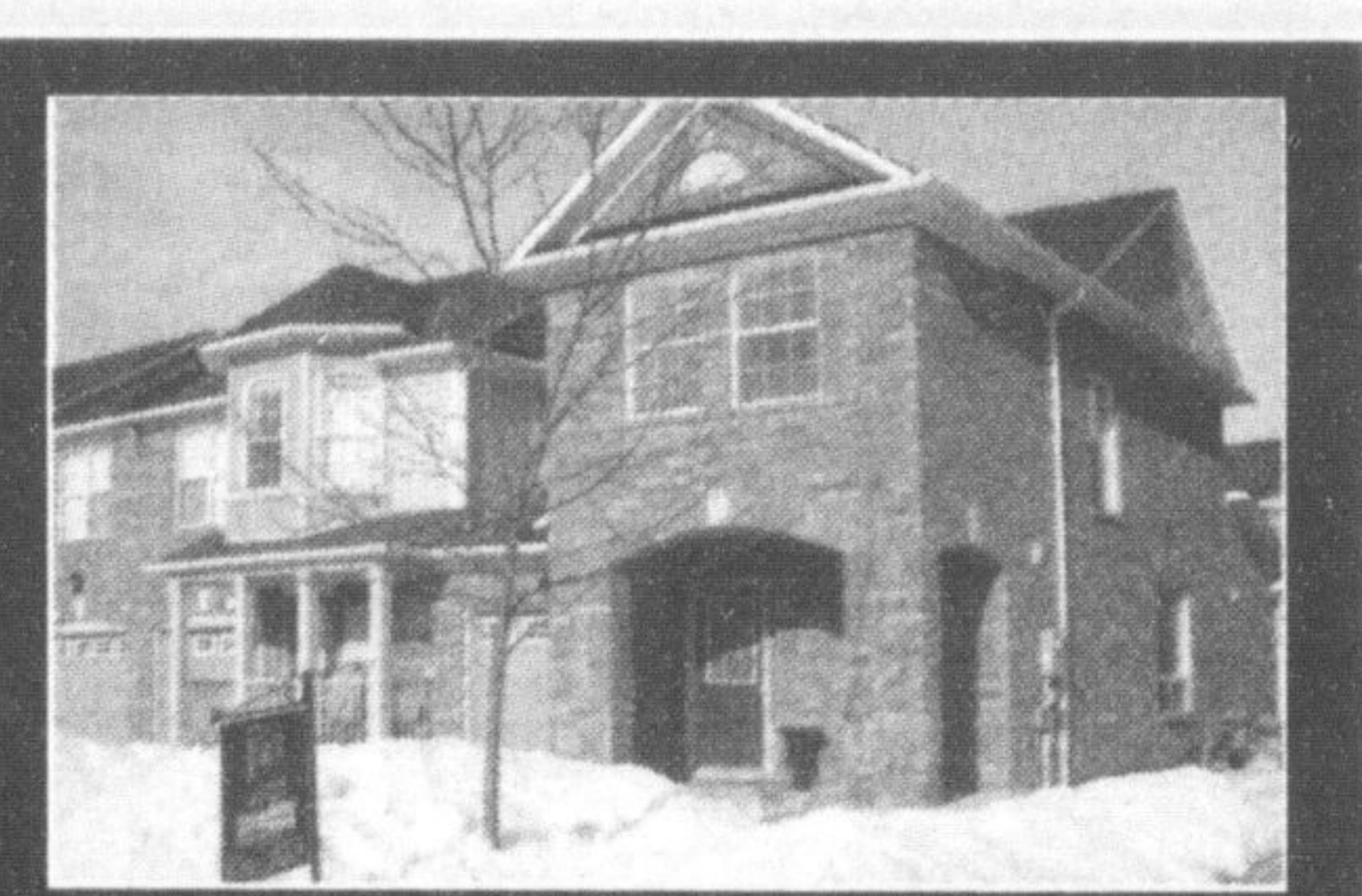
Chris Lightfoot
 Sales Representative
 Direct
 905-876-7979
 905-878-8101



OPEN HOUSE Sun. 2-4pm
160 Cooke Crescent
\$429,900
COMFORT ON A CRESCENT
 Opportunity knocks!! Stunning 4- bedroom Beaverhall "Venice" model on cozy crescent in Dempsey Park - 2050 sq feet of comfort and style!! Upgraded maple kitchen cabinets and ceramic bkpsplsh, oak strip floors, custom paint finishes, huge backyard complete with interlock/landscaping/ shed, 2nd floor walkout balcony and more!!! Ask about all the extras when you see this beauty!!!!



INGRID HOLLINGER
 Sales Rep.
905 878-8101
 Direct Line
 416.822.5558



This Croftside end unit home is located in Hawthorne village, on a small quiet street. Just steps from schools and amenities. This home has dark oak hardwood, oak stairs, fully finished basement, three bedrooms, 2.5 baths, parking for 3 cars. Call for private showing. **\$314,900.**
Make Your Dream A Reality



Adina Nonis
 Sales Rep.
 905-878-8101
 adinanonis@royallepage.ca



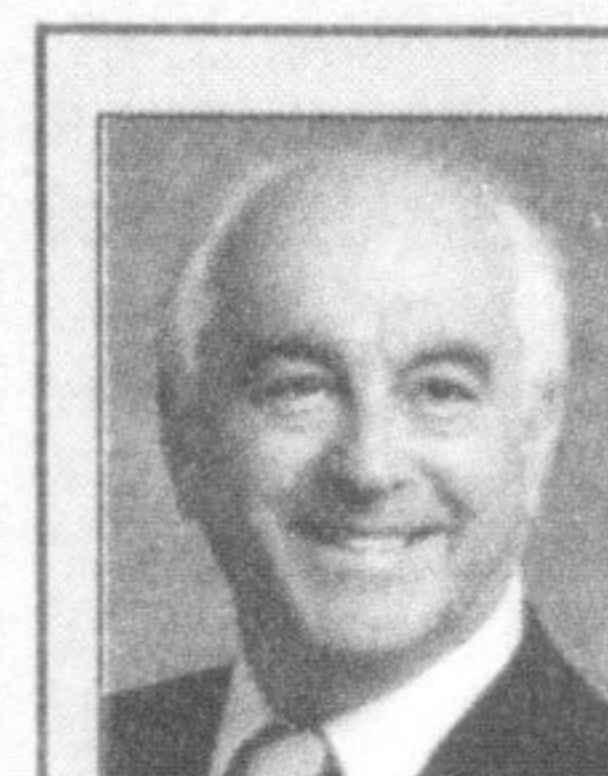
LISTING PRICE \$479,000
4 BEDROOM GREENPARK BEAUTY!
 This lovely home shows pride of ownership. Located in a wonderful neighbourhood and on a quiet street. Walking distance to shopping, restaurants, movie theatre, transit/go station, schools, parks and Downtown Milton. 9 foot ceilings gleaming hardwood floors, 4 washrooms, main floor laundry room/mudroom. Visit my virtual tour at www.myvisualhomes.com/adinanonis
2 BEDROOM PLUS DEN APARTMENT FOR RENT IN DOWNTOWN MILTON!
 I have clients wanting to buy a Mattamy "Thistle Bay Model" call me if you are thinking of selling!



Karen Cumby
 Sales Rep.
 905-878-8101
 karencumby@royallepage.ca



NEW LISTING
\$309,900
POPULAR CROFTSIDE MODEL
 Spotless well maintained home. Very tastefully decorated. All appliances are included. Backing onto park. Priced to sell. Won't last long. Call Karen today!



Stewart Haddon
 Broker
 878-8101
 878-3333



\$473,900
LARGE 5 LEVEL SPLIT
 Lots of parking 2 garage 4 driveway, Large family room, Fireplace and walk out to covered deck, Well appointed kitchen, Large rear lot.
 For more information or to view please ask for Stewart Haddon Broker MLS #1093552



Michelle Merritt
 Sales Representative
A HIGHER STANDARD
 905-878-8101
 905-876-5465
 MichelleMerritt@royallepage.ca



SIMPLIFY YOUR LIFESTYLE
 Condo living at it's best! 1200 sqft, 2 bedroom, 2 full bath, open concept floor plan, tastefully decorated and ready for you to move in. Enjoy heated indoor pool, sauna, weight room, recreation room, terrace and the perfect location to downtown shops and millpond. 1 underground parking space and locker.
www.michellemerritt.ca



Lana Harvey
 Sales Rep.
 905-878-8101
 www.LanaHarvey.com
 lanaharvey@royallepage.ca



OPEN HOUSE SUN. APRIL 6, 2-4PM
871 MCDUFFE CRES.
LOCATION LOCATION LOCATION
 Rare "ALL BRICK" 4 Bedroom Lindsay Model on quiet street in Hawthorne Village. Steps from the park and walking distance to shopping and schools. Featuring a large, upgraded kitchen with stainless steel appliances and backsplash. Main floor has hardwood throughout, upgraded lighting and is freshly painted. Large bedrooms for the growing family, master has soaker tub and separate oversized shower. Beautifully interlocked in backyard. This home is a must see! www.LanaHarvey.com or call for your personal tour.
LOOKING FOR WELLINGTON, QUEENSGROVE AND TOTHBURG MODELS. PLEASE CALL.
YOUR REALTOR IN YOUR COMMUNITY



Susan Recoskie
 Sales Representative
878-8101



\$309,900
NOW IS THE TIME
 to own this super 4 bedroom, 3 bath home. Basement is fully finished with a wet bar. Some windows have been replaced and the master bedroom has a 2 piece ensuite. Super neighbourhood close to schools and shopping. Only \$309,900. This home has alot to offer a family so give me a call. Susan Recoskie 908-878-8101.



Michelle Merritt
 Sales Representative
A HIGHER STANDARD
 905-878-8101
 905-876-5465
 MichelleMerritt@royallepage.ca



4000 SQFT ON A PREMIUM LOT
 Just what you have been waiting for! Mattamys biggest Rockhaven model, just shy of 4000 sqft on a 56' huge pie shaped lot. Formal living room, main floor office, open concept family room, upgraded kitchen, butlers pantry, gorgeous maple stairs all the way to the basement. Luxurious master retreat, 4 large bedrooms, 2nd floor fitness studio, tech centre and 2nd floor laundry. Professionally painted throughout. Don't miss this one.
JOIN ME THIS SATURDAY AND SUNDAY FOR MY OPEN HOUSE 12:00 - 5:00. \$689,683.
www.michellemerritt.ca



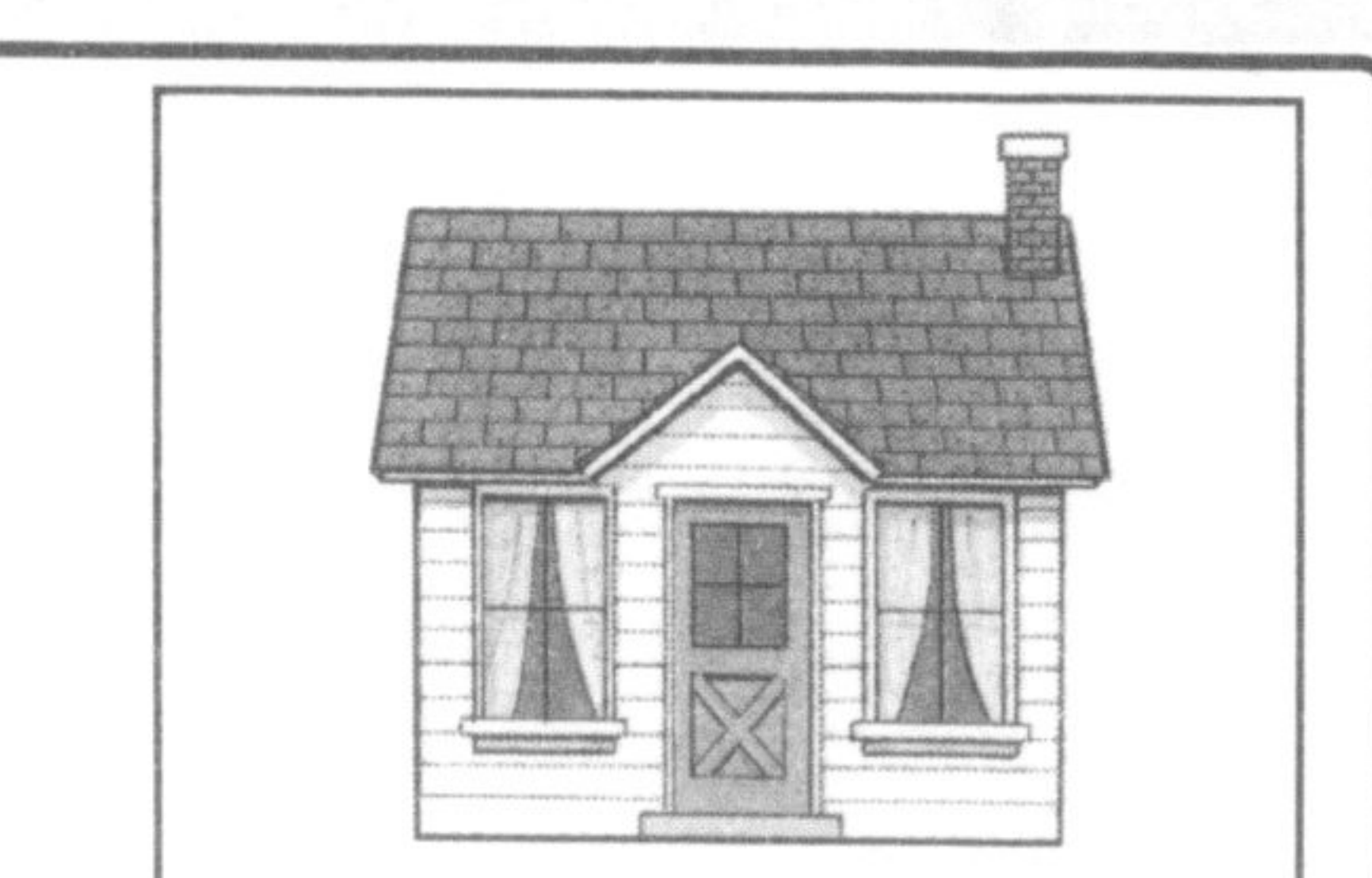
Michelle Merritt
 Sales Representative
A HIGHER STANDARD
 905-878-8101
 905-876-5465
 MichelleMerritt@royallepage.ca



\$445,771
2600 SQFT FAMILY HOME
 Tiffany Built. Dark hardwood floors throughout main level, open concept kitchen and living room with separate formal dining room, main floor laundry, 9ft ceilings, huge 2nd floor Family room, 4 large bedrooms, oversized basement windows with direct access to garage, great potential for a separate living space. Fully landscaped and fenced lot. Great location close walk to both Public and Catholic schools.
www.michellemerritt.ca



Chris Lightfoot
 Sales Representative
 Direct
 905-876-7979
 905-878-8101
 chrislightfoot@royallepage.ca



COMING SOON
Georgetown bungalow on LARGE LOT!
 LOOKING FOR OFFICE SPACE w/ ample parking for 15-20 employees, to purchase in Oakville/Milton corridor- approx. 3500-5000 square feet needed. Call me today!
REAL ESTATE WITH REAL RESULTS.

* Sales Representative **Broker