

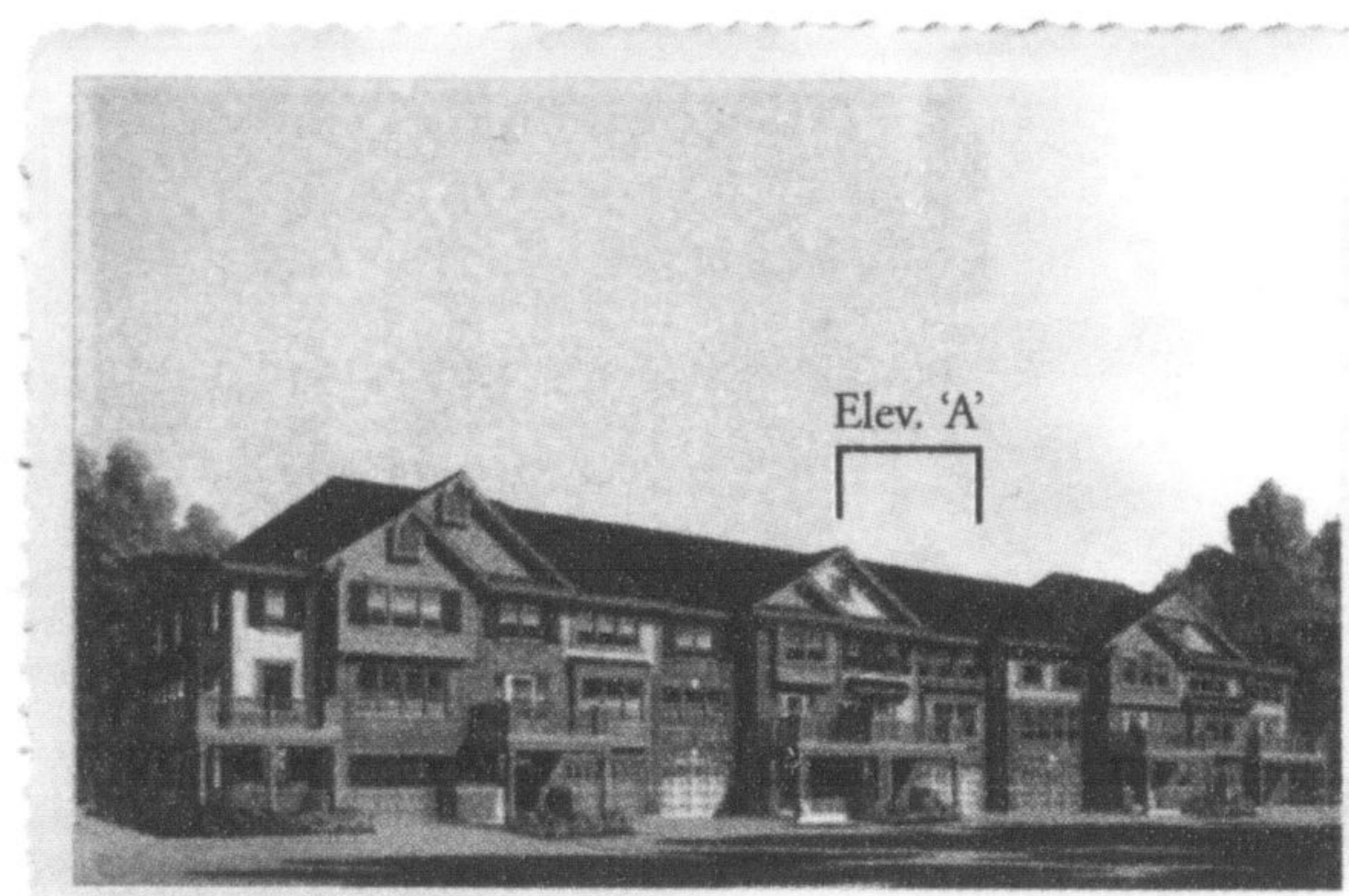
★★★★★ Highest in Customer Satisfaction With
New Home Builders in Greater Toronto Area,
Two Years In A Row ★★★★★

We Now Have Multiple Neighbourhoods Available For Multiple Family Needs.



Large Variety Of Home Designs To Suit Any Size Family!

Today, Hawthorne Village invites you to a whole new neighbourhood of much anticipated WideLot™ homes. We are presenting the largest variety of new homes we have ever offered. This collection is so large, we've had to open a complete new neighbourhood in this community. Come and see why 7,000 families have already chosen to live at the foot of the escarpment in a community that has just been honoured as ENERGY STAR® Builder of the Year.



Village Homes, The Cherrywood 'A',
1,040 Sq.Ft., \$220,990

- Village Homes From \$220,990
- WideLot™ Townhomes From \$249,990
- Main Street Townhomes From \$275,990
- WideLot™ Semis From \$289,990
- 28' Detached Homes From \$339,990
- 34' WideLot™ From \$307,990
- 36' WideLot™ From \$345,990
- 40' WideLot™ From \$396,990
- 43' WideLot™ From \$413,990
- 50' WideLot™ From \$427,990



36' WideLot™, The Walnut 'B',
2,427 Sq.Ft., \$383,990

www.mattamyhomes.com



Presentation Centre Hours:
Monday to Thursday 1pm-8pm; Friday 1pm-6pm;
Saturday, Sunday and Holidays 11am-6pm



Mattamy Homes received the highest numerical score in the Greater Toronto Area (GTA) in the proprietary J.D. Power and Associates 2006-2007 Canadian New Home Builder Customer Satisfaction Study. 2007 study based on 5,158 responses from homeowners in the GTA, measuring 25 home builders and measures opinions of consumers closed on their new homes total their new homes January-December 2006. Proprietary study results are based on experiences and perceptions of consumers surveyed in March-June 2007. Your experiences may vary. Visit jdpower.com.

All illustrations are artist's concept. All dimensions are approximate. Prices, specifications, terms and conditions subject to change without notice. E.&O.E.

When Our Homeowners Feel Satisfied, We Feel Satisfied.