



RE/MAX REAL ESTATE CENTRE

INC., BROKERAGE

878-7777

22 Ontario St. S., Milton, ON

Chances are we're going to sell your home.
Why Not Call Us First?

CLAYTON & CRAIG HACKENBROOK



SERVING MILTON SINCE 1980

(905) 878-7777

www.hackenbrook.com



CRAIG HACKENBROOK
Sales Representative



SOLD

SUPER SEMI

This 3 br home is located 15 min to Milton near 10th Line & Britannia and close to schools & shopping. It features hardwood floors, 5 appliances, central air, ceramic floors in kit & baths and a finished basement and a tasteful decor throughout. There's lot of value in this property so call Clayton or Craig to view.

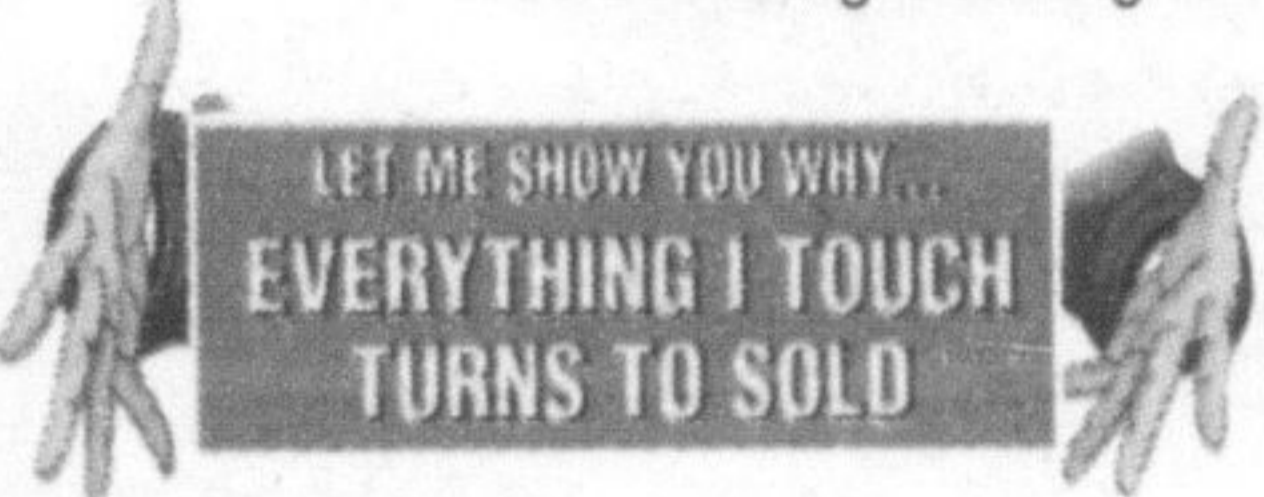
NEW LISTING ASKING \$357,500

WANTED FOR QUALIFIED BUYERS:

- 3 or 4 bedroom home on Marcellus, White, Syer, etc... up to \$410,000
- 4 bedroom home in Timberlea... up to \$490,000
- Older home preferably near downtown core... up to \$600,000
- A property in newer area with a double driveway... up to \$380,000
- 4 brdm home preferably w/garage in mature part of town... up to \$490,000

INDUSTRIAL / COMMERCIAL REAL ESTATE

- Free standing building around 10,000 sq. ft to buy



Think of Clayton & Craig Hackenbrook for buying or selling your next home. Let 27 years of experience in residential and commercial real estate help guide you!

These are serious buyers. If you are interested in knowing more, please call Clayton or Craig



TERI LYNN & NORM HILSON

*Sales Representatives

MEMBER OF THE REMAX HALL OF FAME

thilson@sympatico.ca • ndhilson@sympatico.ca

www.terilynnhilson.com • www.listedsold.com

905-878-7777

OUR MARKETING STRATEGY SETS US APART FROM THE REST.

CALL US TODAY FOR A FREE MARKET EVALUATION OF YOUR HOME TO SEE HOW IT CAN WORK FOR YOU!!!

- Mortgage Preapprovals
- Free Comparative Market Analysis
- Open Houses
- Virtual Tours
- Professional Feature Sheets
- Your Own Domain Name Of Your Listing

We will insure your home against defects for the entire listing period and provide insurance on new resale purchase for 6 months absolutely FREE!



This 4 bedroom home is loaded with upgrades hardwood flooring through-out (upper and lower level), upgraded staircase, large family room with gas fireplace, peek through wall from family room to kitchen, eat in kitchen, upgraded tumble marble back splash, Upgraded ceramic tile throughout, large master bedroom with 4 pce ensuite with corner soaker tub, large fenced lot completely re sodded, exposed aggregate patio, 4 car parking, this home shows a 10. **Listed at 443,900.**



ATTENTION ALL INVESTORS!

Great chance at owning your own multi unit building. Located in a great area close to shopping, highways, public transportation. Four good sized units in a well cared for building.

Was \$489,900. NOW \$459,900.

Crossword

1	2	3			4	5	6		7	8	9	
10			11		12			13		14		
15					16					17		
	18			19		20				21		
			22			23		24		25		
	26	27						28		29	30	31
32				33			34	35		36		
37						38			39		40	
41			42	43			44			45	46	
47					48			49		50		
					51		52		53			
54	55	56			57	58		59		60	61	
62					63			64		65		66
67					68					69		
70							71				72	

ACROSS

- Social reformer Dorothea
- Flock sound
- Saint, in Mozambique
- Regarding
- Leaving
- Juicer residuum
- Unaccounted for soldiers: abbr.
- Trunk line
- Cookbook author Rombauer
- Mike or Cicely
- Thus far
- Actual
- Odds and
- Couch
- Pale shade
- Bring to mind
- Quarterback's grunt
- Hunter slain by Diana
- "Paradise" Dashboard Light
- Great Scale note
- Thread holder
- Bring up the rear
- Man et al
- Like some lingerie
- Hinny
- Actor Christopher and others
- Creator of Meg, Jo, Beth and Amy

- React to poison ivy
- Sour mood
- All of the Jets
- School cheer
- Not active
- Heiden or Severeid
- Beautify
- Form of address
- Walkway
- Free-for-all
- Watchdog gp.?
- Lodge brother
- Trig. ratio
- Request to Santa

DOWN

- Tenebrous
- Monogram unit: abbr.
- Like Superman's vision
- Low
- Fanciful
- Contributes a share
- Free from doubt
- English painter -Tadema
- Autumn stone
- Switchback curves
- Looks, slangily
- Burt Reynolds's sequel to White Lightning
- High-seas crime
- Atop
- Loses traction
- Candlemas Day mo.
- Heartbeat
- Dickens title start
- Heavens supporter
- Buddhist holy city
- Compass' pair
- One with will power?
- Delighted exclamation
- Coward and Harrison
- Unlikely
- Prove
- Solidify
- Undo
- Skedaddle
- Particulars
- Mythological underworld
- Distant: prefix
- Unwritten
- Porcine pronouncement
- Golf target
- Very attentive
- Mexican food
- Geometric shape: abbr.
- Merry month



KATRINA WALTON

Sales Representative

905-878-7777

Welcome Home
RE/MAX REAL ESTATE CENTRE

GREAT 4 BEDROOM HOME

Super 4 bedroom home for the growing family. L-shaped living/dining room. Galley style kitchen with dinette. 3-season sun room overlooking perennial gardens. Fully finished lower level with rec room, office and utility room. Just move in and enjoy. Close to schools, shopping, transit and easy access to highways for commuters. Don't miss out - call today to see this bright spacious home.



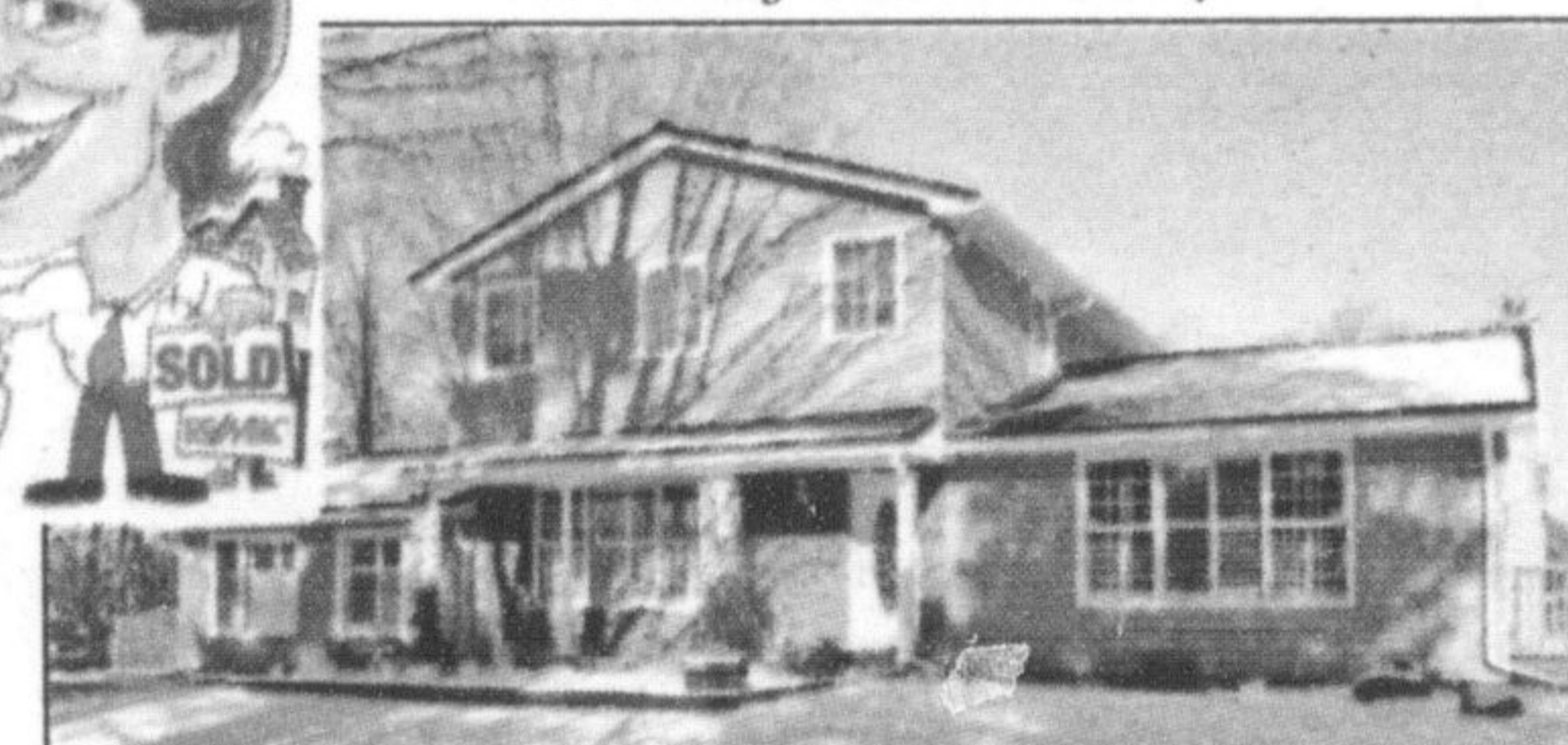
Offered at \$299,900

RE/MAX REAL ESTATE CENTRE



Mark Holman,

The Friendly Real Estate Salesperson



8495 FIRST LINE, CAMPBELLVILLE MOVE TO THE COUNTRY!

11 acre rural property with barns and stalls for horses. Immaculate 4 bedroom, 2 storey house. Totally renovated within last 2 years. No fixing up needed here because everything has already been done. 6 minutes to 401 at Guelph Line.

Call Mark for directions or more information
Office: 905-878-7777 Cell: 416-346-2645



RICHARD HIERMAN
Sales Rep

905
878-7777

hierman@globalserve.net



OPEN HOUSE
SUNDAY
2:00-4:00pm
450 Woodward Ave.

GREAT ADDITION

This home boasts an addition with sunken living room and large separate dining room. 3 large bedrooms, 3 bathrooms, main floor family room, 2 gas fireplaces and authentic English pub combined with very large lot equals great value. **\$359,900.**

SUDOKU

6	9		1	8				2
	8			2		3	1	
	1		6	7				8
								4
8	9	5	4		6	1	7	3
2								
7			4	1			9	
5	4		2				8	
9			8	3		4		5

A	O	L			C	E	S			K	T	E
V	C	P	S		E	E	M		E	N	V	L
M	A	V	M		N	R	O	V		C	I	E
		T	E	R	I	N	I	H	V	A	N	O
				T	I	N	S		H	C	I	
	V	S	I	U	O	L		S	E	V	E	R
S	S	V		R	E	E	H	S		S	E	S
G	V	L			L	O	O	P	S		V	L
E	H	T	Y	B		N	O	I	R	O		H
L	L	A	L		R	E	C	E	L	S	T	E
				V	A	F	O	S		S	D	S
L	V	A	L		R	E	L	Y		N	O	S
V	A	M	A		R	I	A	T	R	O	V	A
P	L	P			P	U	L	G		N	O	G
O	V	A			M	A	V				X	I