

3 for 1

BUY 1, GET 2 FREE!!!

FREE Eye Test
Accepted by ALL Major Insurance Companies
No Appointment Necessary
Superior Customer Service

great glasses 3for1
Fashion for the Naked Eye

1250 STEELES AVE. In The New Walmart Plaza 905-864-4070

Dateline

• from **DATeline** on page A17
Hairspray. The cost is \$2. And bid euchre takes place at 1:30 p.m. at a cost of \$2.50 for members and \$4.50 for non-members. For more information, call (905) 875-1681.

Friday Feb. 1

The Salvation Army Khi Community, 100 Nipissing Rd. unit 3, holds its junior (ages nine to 12) and senior (13 to 17) youth groups on alternate weeks. Activities vary. Contact Dan Bonham at (905) 875-1022 for a schedule.

The Deck youth centre, 200 Main St. (rear entrance), invites students in Grades 6 to 8 to drop by between 3:30 and 6:15 p.m. to play a game of pool or just hang out. High school students are welcome from 7 to 11 p.m.

Milton District Hospital holds a drop-in breastfeeding group with a certified lactation consultant from 10 to 11:30 a.m. at Our Lady of Victory School, 540 Commercial St., with information shared and babies weighed. For women and babies only. For more information, call Jill Hicks at (905) 878-2383, ext. 7610.

The Milton Seniors' Activity Centre, 500 Childs Dr., holds bingo at 9:30 a.m., contract bridge at 9:30 a.m., its Cyber Café from 1 to 3 p.m. and darts and billiards from 9 a.m. to 4 p.m. The cost for each activity is \$2 for members and \$4 for non-members. Euchre takes place at 1:30 p.m. at a cost of \$2.50 for members and \$4.50 for non-

members. Its Friday Evening Movie is held at 7 p.m. featuring The Bourne Ultimatum. The cost is \$2. And Evening Euchre takes place at the Campbellville Lions Hall at 7:30 p.m. at a cost of \$2.50. For more information, call (905) 875-1681.

Friday Feb. 1 - 2

The Milton Players present the farce "There Goes the Bride" at the Milton Seniors' Activity Centre, 500 Childs Dr. For the Friday performance, doors open at 7:30 p.m., with the show starting at 8 p.m. A cash bar and refreshments are available. Tickets cost \$20. Saturday is a dinner theatre. The bar opens at 6:30 p.m., dinner's at 7 p.m. and the show starts at 8:15 p.m. Tickets cost \$40 each in advance or \$45 at the door. For tickets, call (905) 875-0629 or visit Boutique 188, 188 Main St.

Saturday Feb. 2

The Milton Community Resource Centre, 410 Bronte St., holds its Dad and Me drop-in program from 9:15 to 11:15 a.m.

Monday Feb. 4

The Learning Disabilities Association of Halton meets from 7 to 9 p.m. at its resource centre on Guelph Line in Burlington. The topic is effective planning strategies. A donation is requested. To reserve a seat, call (905) 333-1977. For more information, visit www.ldahalton.ca.

The Ontario Early Years Centre, 410 Bronte St. S., holds its Developmental Early

Identification and Prevention Program clinic from 9:15 to 11:15 a.m. for families with kids from newborn to five years old. It offers a 15-minute consultation with professionals from speech, hearing, behaviour, pre-school and infant development. No appointment is necessary; it's on a first come, first served basis. For more information, call (905) 876-1244, ext. 10.

The Salvation Army Khi Community, 100 Nipissing Rd., unit 3, holds its Volunteer Night from 7 to 9 p.m. to support the foodbank and other community services. For more information, call (905) 875-1022.

The Halton Women's Centre, suite 229 in Hopedale Mall, 1515 Rebecca St. in Oakville, holds its free Family Law Legal Clinic from 6:30 to 8:30 p.m. providing half-hour private sessions to discuss separation/divorce, child/spousal support and child custody/access. For more information, call (905) 847-5520 or visit www.haltonwomenscentre.org.

The Milton Seniors' Activity Centre, 500 Childs Dr., holds duplicate bridge at 9:15 a.m., its Cyber Café from 1 to 3 p.m. and darts and billiards from 9 a.m. to 9 p.m. The cost for each activity is \$2 for members and \$4 for non-members. Bid euchre takes place at 1:30 p.m. at a cost of \$2.50 for members and \$4.50 for non-members. For more information, call (905) 875-1681.

Bergsma's Home Decor

PAINT • WALLPAPER & BORDERS • LIGHTING • WINDOW COVERINGS • HOME DECORATION ACCESSORIES & SUPPLIES

39th Annual January PAINT & HOME DECORATING SALE



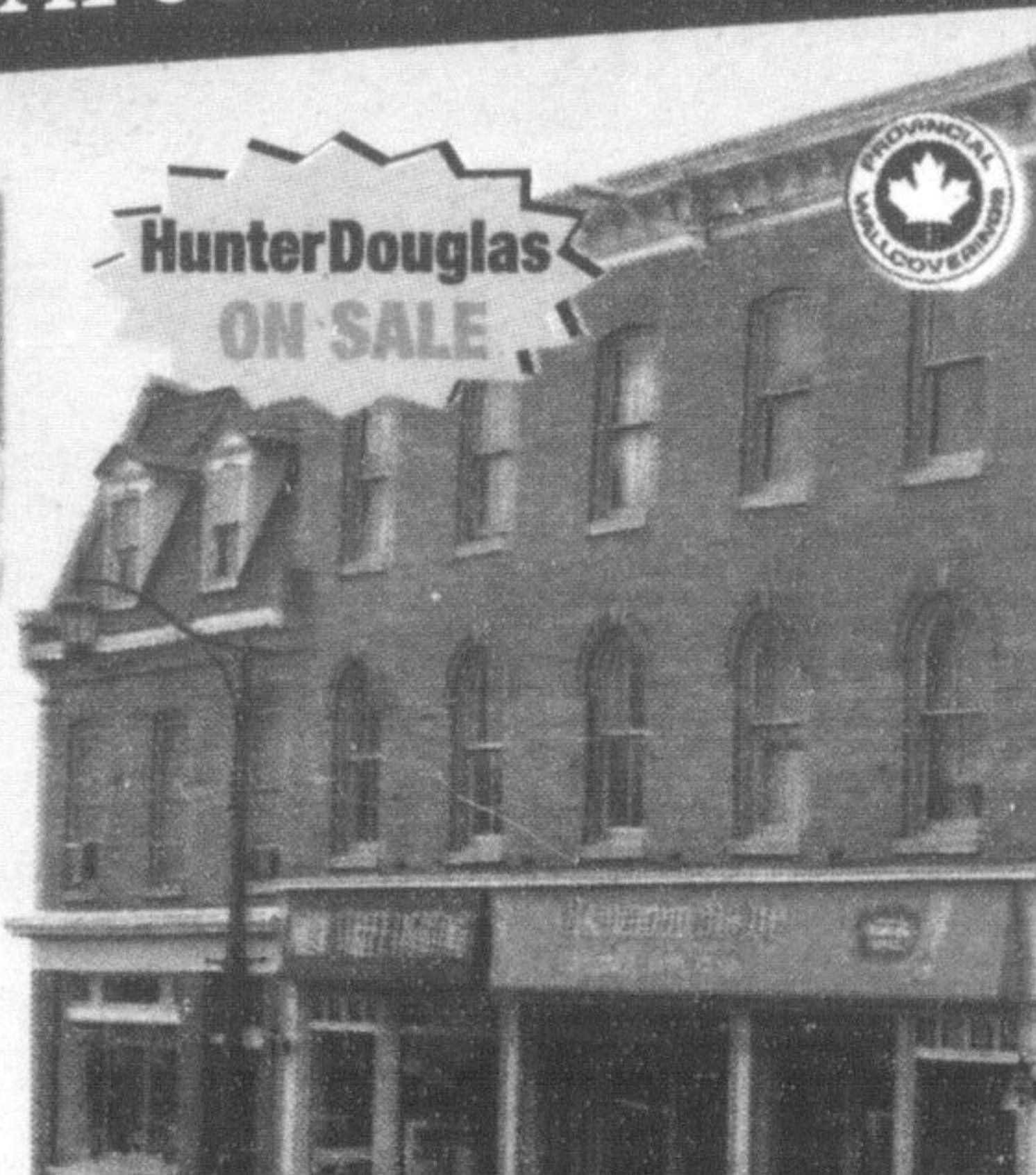
LAST WEEK! SALE ENDS SATURDAY FEB. 2ND

"Looking after your home interiors since 1985, come see us in beautiful downtown Milton, we have over 100 years of combined experience."



HunterDouglas ON SALE

20-50% off
all wallpaper
book orders
largest selection in Milton!



194 Main Street East, Downtown Milton • (905)876-4922 www.bergsmashomedecor.com
Hours: Mon-Wed 7am-6pm, Thur-Fri 7am-8pm, Sat 9am-5:30, Sunday - Closed

Congratulations on your Retirement!



On behalf of the Milton community, we wish to extend our thanks to Donna McLaughlin, for over 26 years of dedicated service to Milton District Hospital and the Milton community.

During Donna's tenure as Director of Development, her desire to ensure the very best in quality healthcare in Milton as well as ensuring strong relationships with our valued donors was clear. Whether it was visiting with donors in their homes, at their hospital bedside or at community

events, her gratitude for their generosity and genuine appreciation for their support was always evident.

Donna's passion for Milton District Hospital was also clear in her community involvement. She tirelessly attended all fundraising events and celebrations including galas, Auxiliary events, hikes, golf tournaments, cultural celebrations, donor unveilings, community breakfasts and Hospital staff events. As a representative of the Milton District Hospital Foundation she was always available to show our appreciation for the overwhelming support we receive from our community.

Her support to members of the MDH Foundation Board and staff has been outstanding and we appreciate her dedication and commitment to the Foundation for over 26 years.

Donna, thanks for the memories! We wish you the very best in your retirement!



MDH Foundation Board of Directors

For local arts events go to

www.arts Milton .com