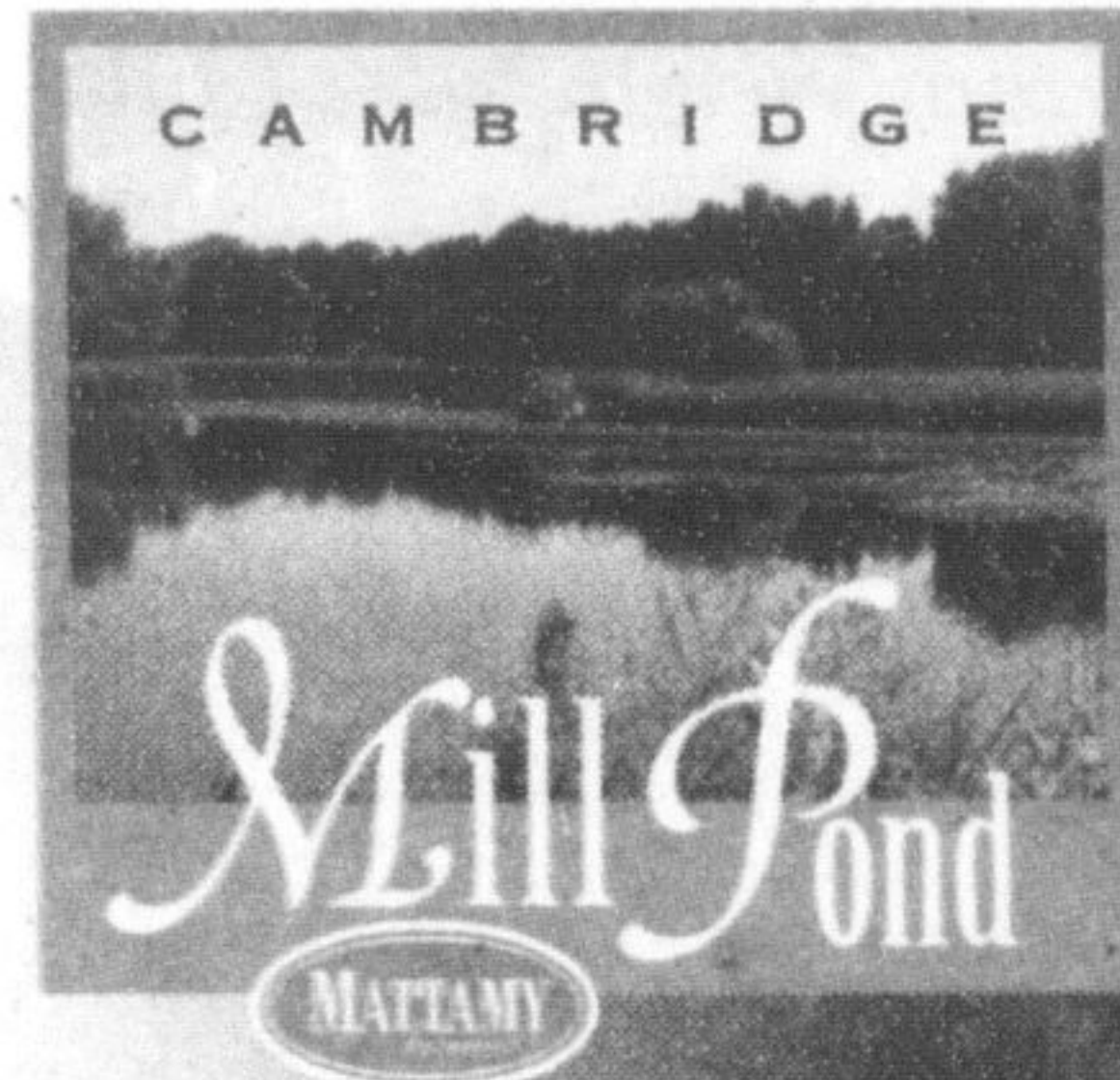


★★★★★ HIGHEST IN CUSTOMER SATISFACTION WITH
NEW HOME BUILDERS IN GREATER TORONTO AREA,
TWO YEARS IN A ROW ★★★★★

Coming Soon, A More Natural Life In Cambridge.

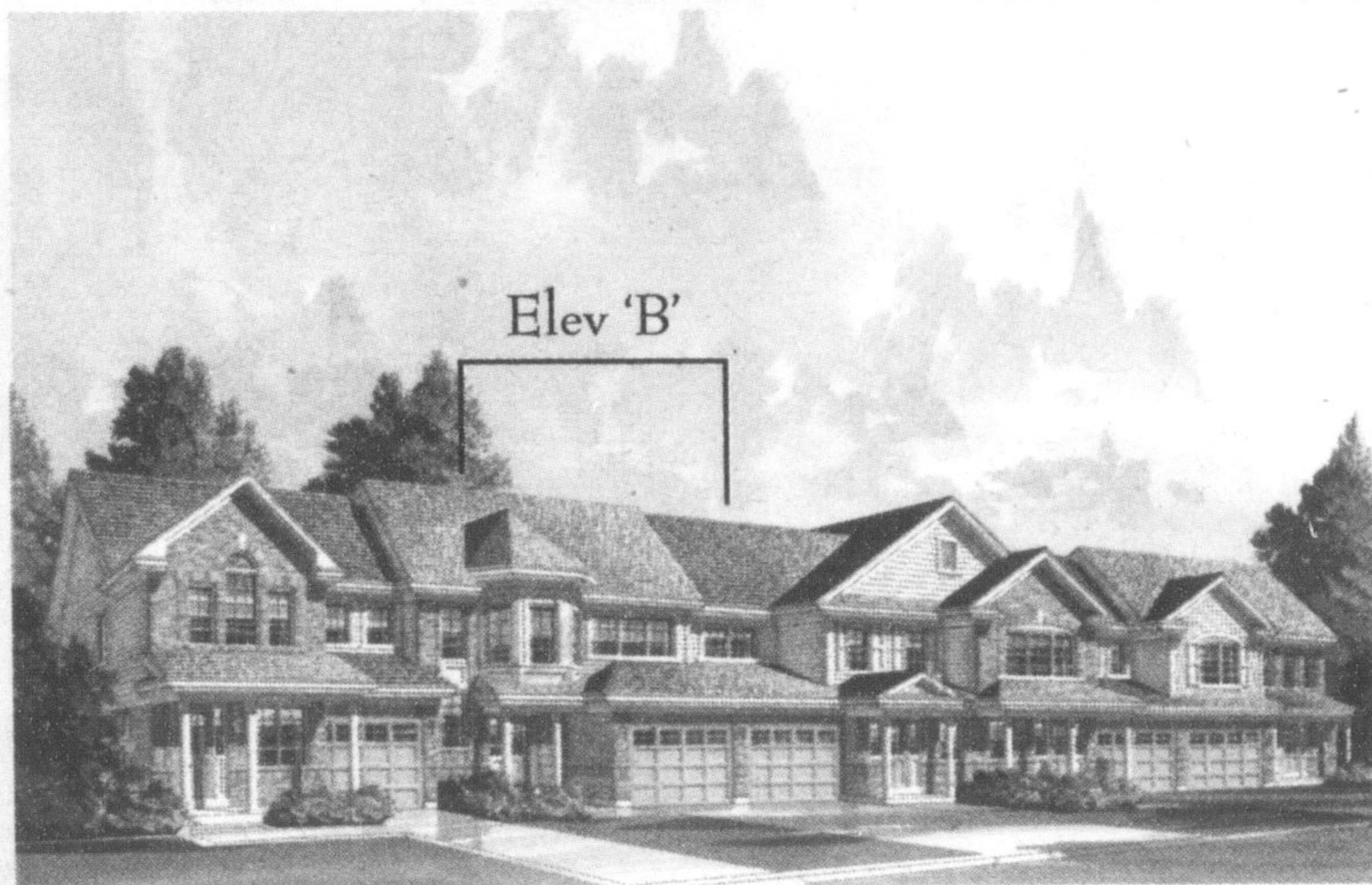


Town of Hespeler

Townhomes Opening In January 2008

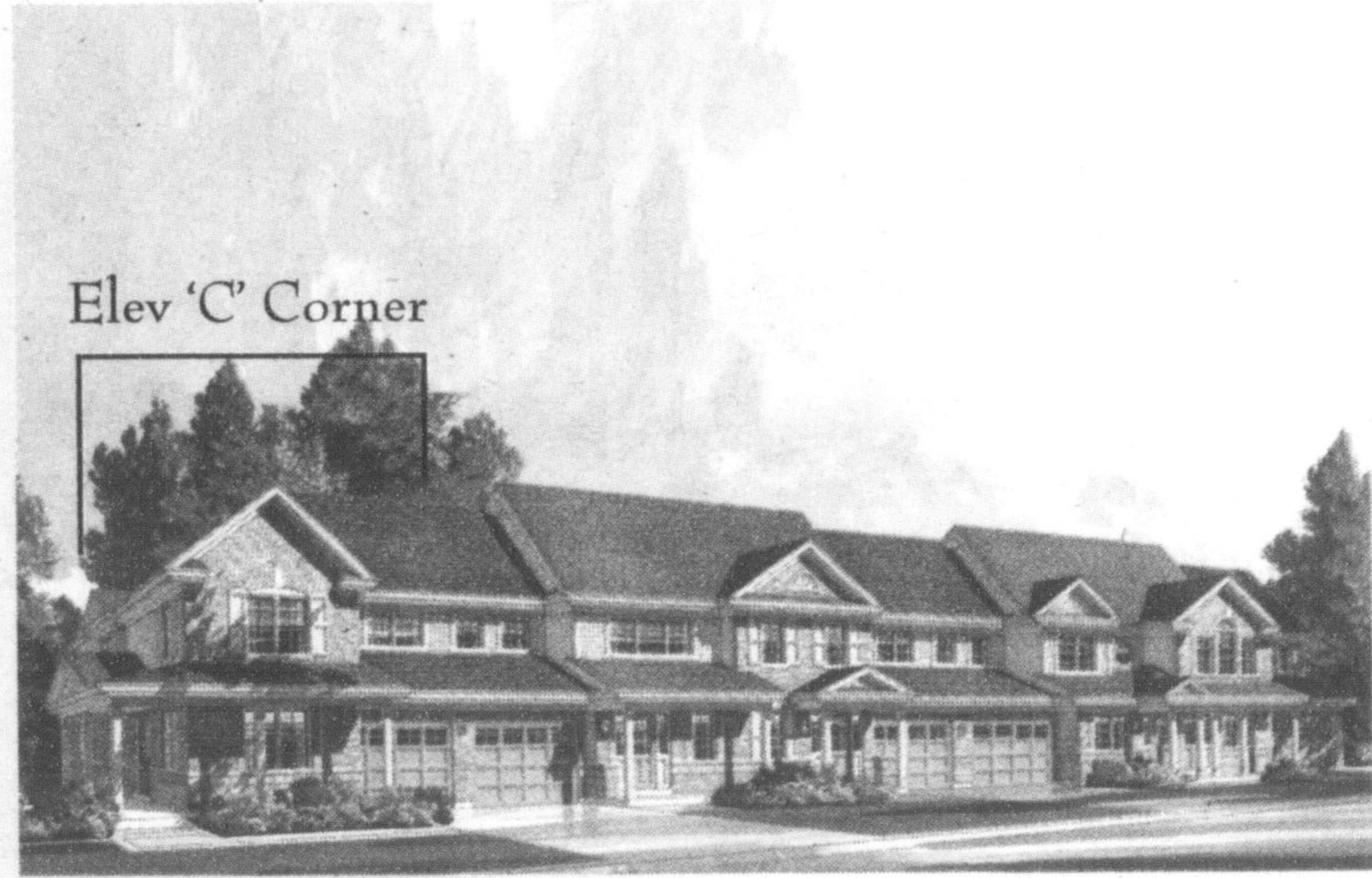
The Mill Pond is a special place just outside of Hespeler, well connected to the many benefits of life in Cambridge. Mill Pond will be a special environment and a fine addition to our 2 other Mattamy communities in Cambridge, Country Club Estates and the friendly family community of Upper Country Club. The Mill Pond will be open with a new collection of WideLot™ Townhomes in January 2008. Shortly following we'll release a beautiful collection of detached 34', 43' & 50' detached WideLot™ Homes.

To Register For This Charming Family Community www.mattamyhomes.com



Elev 'B'

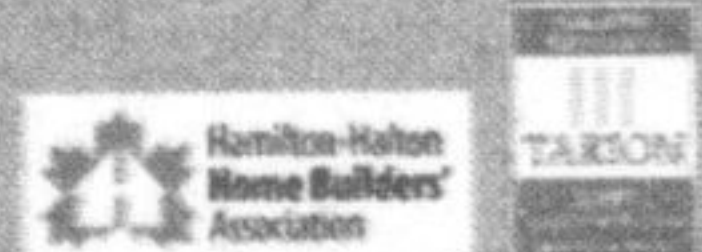
WideLot™ Townhome, The Cyrus 'B', 1,111 Sq. Ft.



Elev 'C' Corner

WideLot™ Townhome, The Southgate Corner 'C', 1,509 Sq. Ft.

www.mattamyhomes.com



All illustrations are artist's concept. All dimensions are approximate. Prices, specifications, terms and conditions subject to change without notice. E.O.M.E.



Mattamy Homes received the highest national score in the Greater Toronto Area (GTA) in the prestigious J.D. Power and Associates 2006-2007 Canadian New Home Builder Customer Satisfaction Study™. 2007 study based on 5,124 responses from homeowners in the GTA, comparing 23 home builders and measures of customer satisfaction based on 100 key issues with their new homes January-December 2007. Proprietary study results are based on experience and perception of consumers surveyed in March-June 2007. Your experience matters. Visit jdpower.com.

When Our Homeowners Feel Satisfied, We Feel Satisfied.