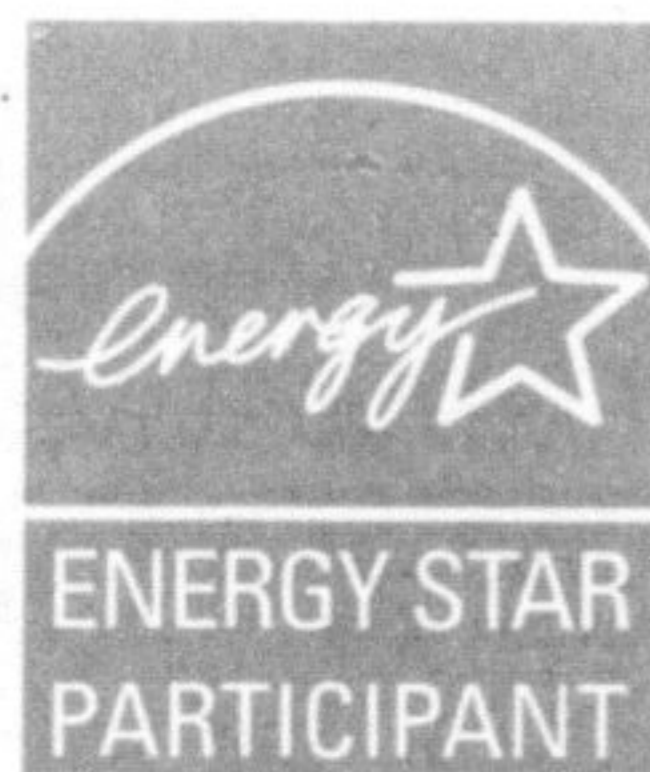


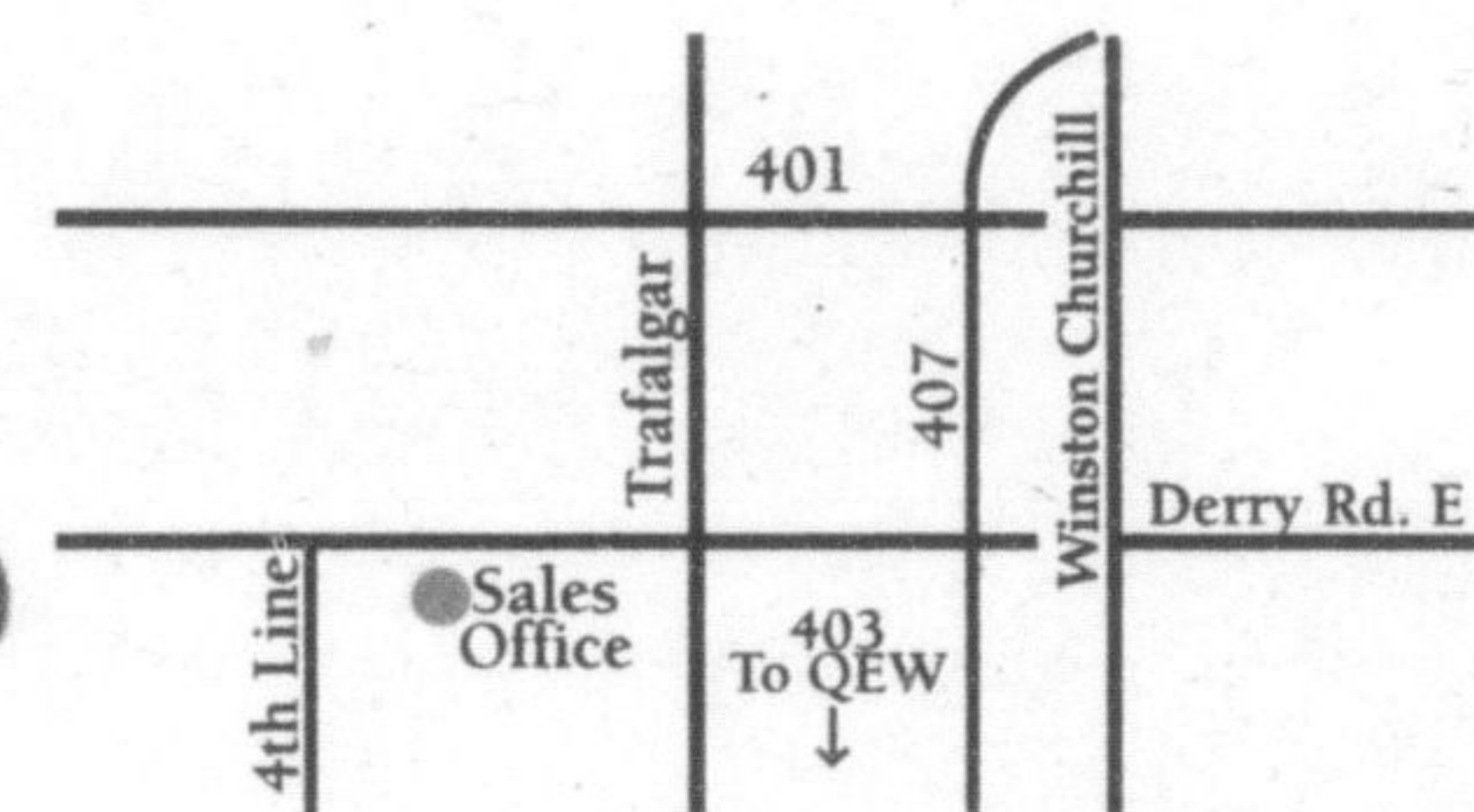
★★★★★ HIGHEST IN CUSTOMER SATISFACTION WITH
NEW HOME BUILDERS IN GREATER TORONTO AREA,
TWO YEARS IN A ROW ★★★★★

For *Great Fall Escarpment Views*, Try Our *New Release Of Homes*.

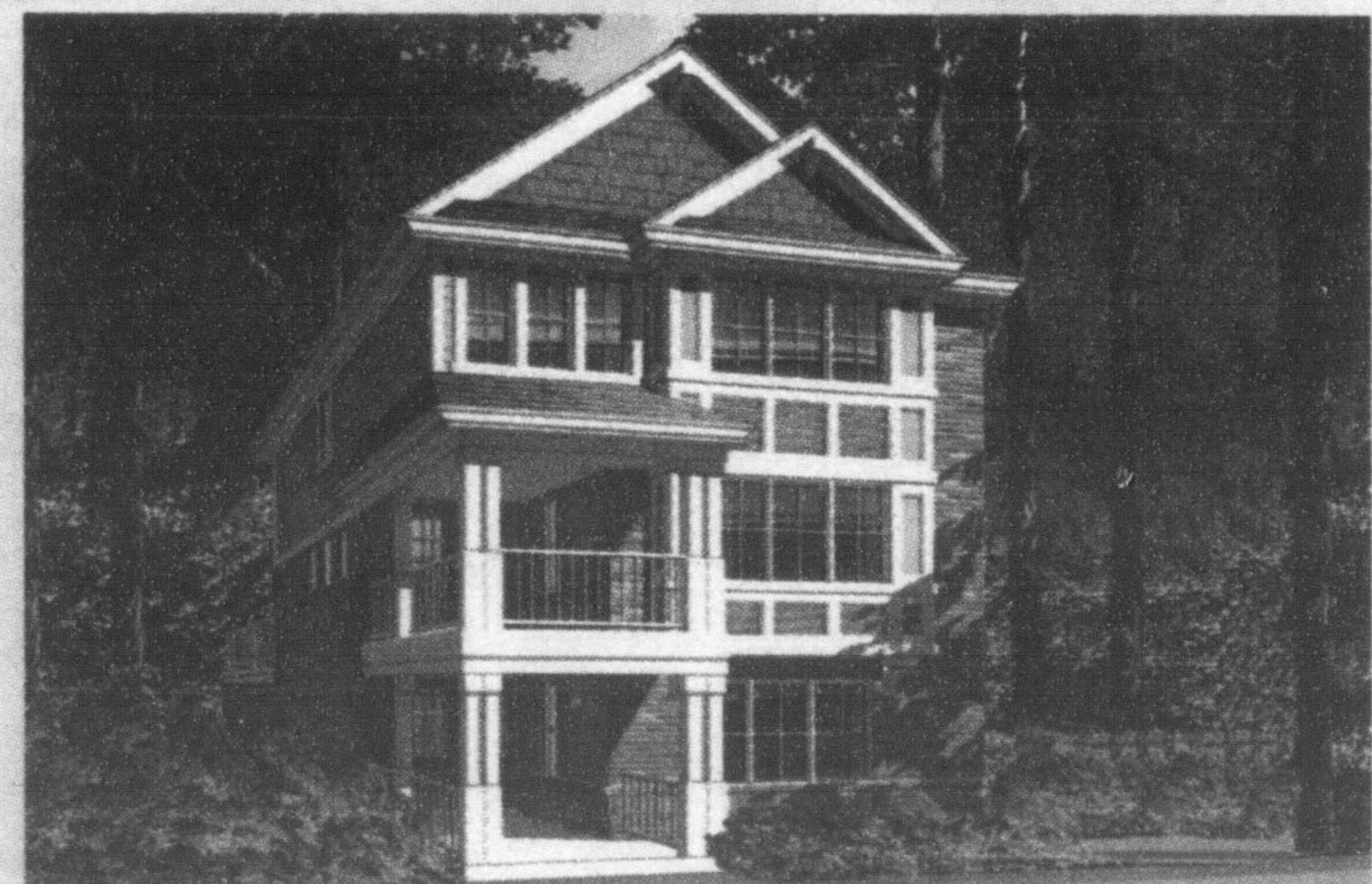


A new release in Hawthorne Village on the Escarpment is selling out quickly. Join us this weekend and discover why more than 6,500 families already enjoy the many benefits of living in Canada's largest WideLot™ community.

WideLot™ Townhomes From \$249,990
Main Street Townhomes From \$275,990
Main Street Detached Homes From \$339,990

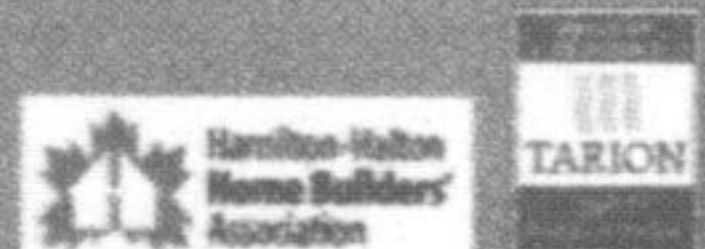


Main Street Townhome, The Ashberry 'A', 1,585 Sq.Ft.,
\$275,990



Detached Main Street Home, The Brentrock 'B', 1,943 Sq.Ft.,
\$348,990

www.mattamyhomes.com



Presentation Centre Hours:
Monday to Thursday 1pm-8pm; Friday 1pm-6pm;
Saturday, Sunday and Holidays 11am-6pm



Mattamy Homes received the highest numerical score in the Greater Toronto Area (GTA) in the proprietary J.D. Power and Associates' 2006-2007 Canadian New Home Builder Customer Satisfaction Study™. 2007 study based on 5,155 responses from homeowners in the GTA, measuring 25 home builders and measuring aspects of customer's closed on their new homes with their new homes January-December 2006. Preliminary study results are based on experiences and perceptions of customers surveyed in March-June 2007. Your experiences may vary. Visit jdpower.com.

All illustrations are artist's concept. All dimensions are approximate. Prices, specifications, terms and conditions subject to change without notice. E.&O.E.

When Our Homeowners Feel Satisfied, We Feel Satisfied.