

# GEARED FOR LIFE IN OVERDRIVE.



Jeep



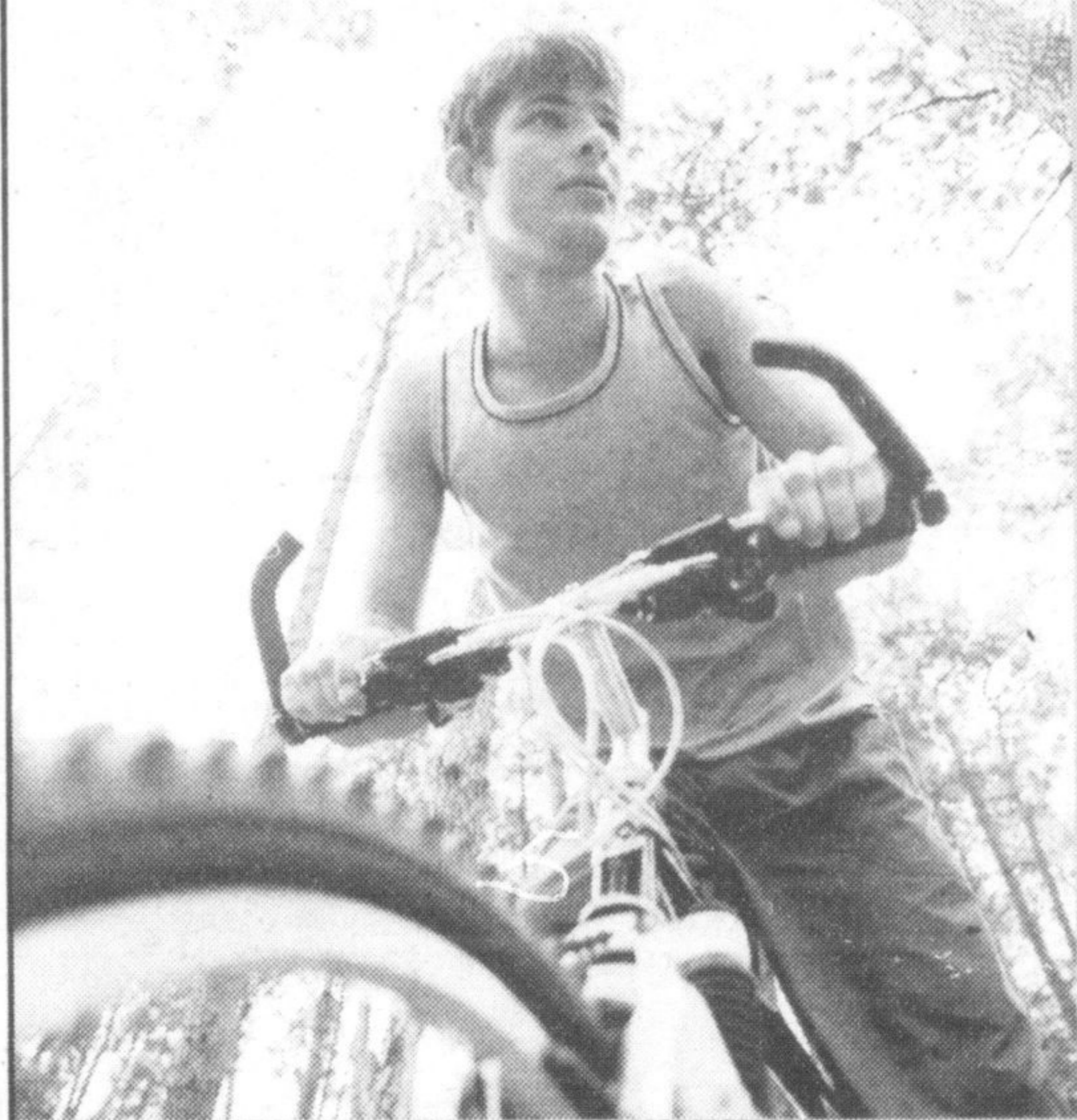
PURCHASE FOR  
**\$18,888<sup>†</sup>**

LEASE FOR  
**\$219<sup>†</sup>** per month for 27 months  
with \$789 down payment.

- 2.0L 4 CYL 16V Dual VVT engine with Automatic Transmission • 17" Steel Wheels • AM/FM CD Radio
- Illuminated Cup Holders • 60/40 Split Recline Rear Seat • Sliding Armrest with Cell Phone Holder
- Available Premium Sound Group with 6 Speaker Boston Acoustic System, Subwoofer and Liftgate Speakers

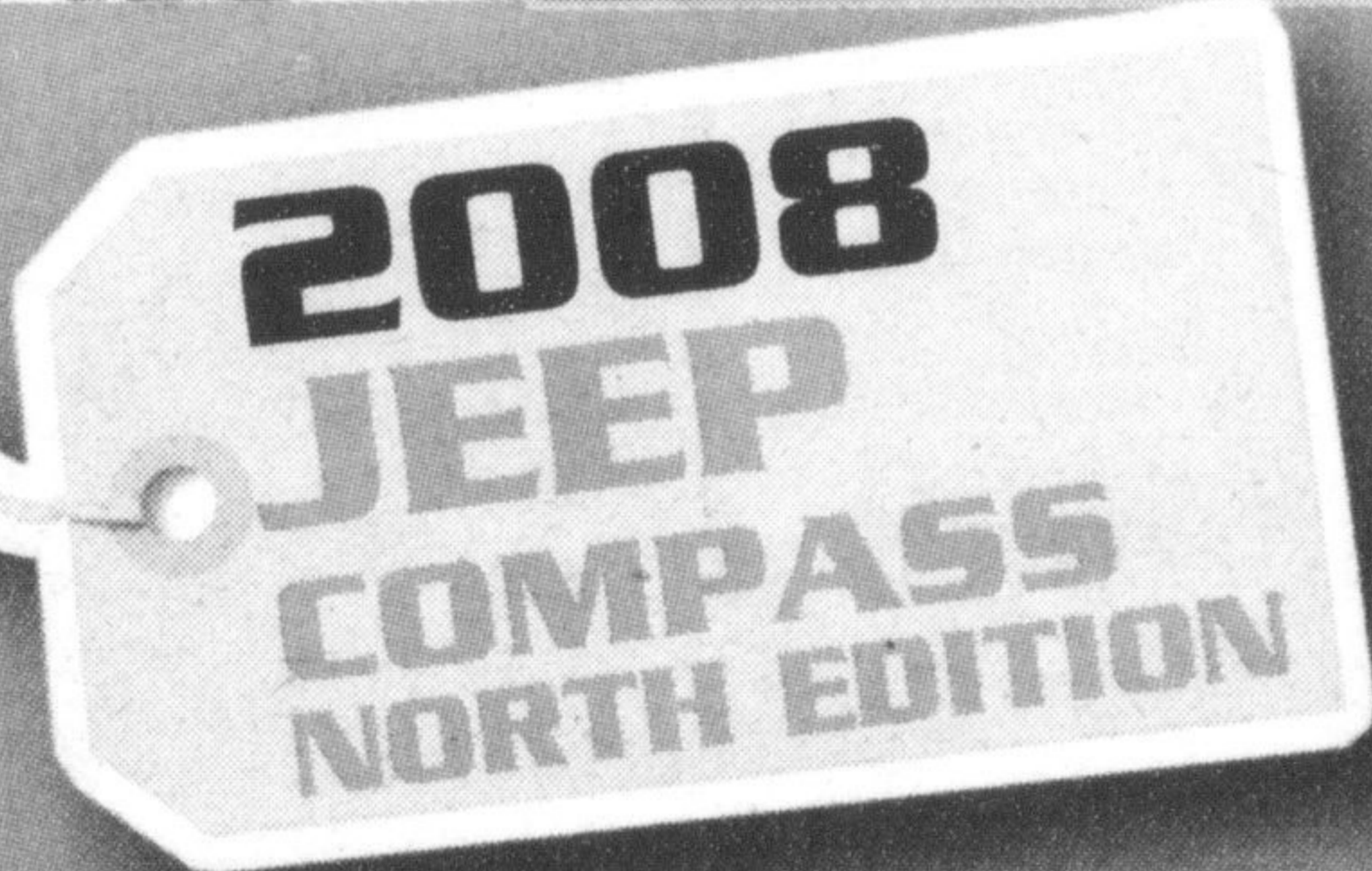
LEASE APR  
**2.99%**

OTHER 27 MONTH LEASES	
DOWN PAYMENT	MONTHLY PAYMENT
\$0	\$249 <sup>†</sup>
\$1,789	\$181 <sup>†</sup>
\$2,789	\$142 <sup>†</sup>
\$3,789	\$104 <sup>†</sup>



PURCHASE FOR  
**\$20,888<sup>†</sup>**

- 2.4L 4 CYL 16V Dual VVT engine with Continuously Variable Automatic Transmission • AM/FM CD Radio
- Speed Control • Available Power Express Sunroof
- Next Generation Multi-Stage Front Air Bags
- Rear 60/40 Folding Seat • Folding Flat Load Floor Storage



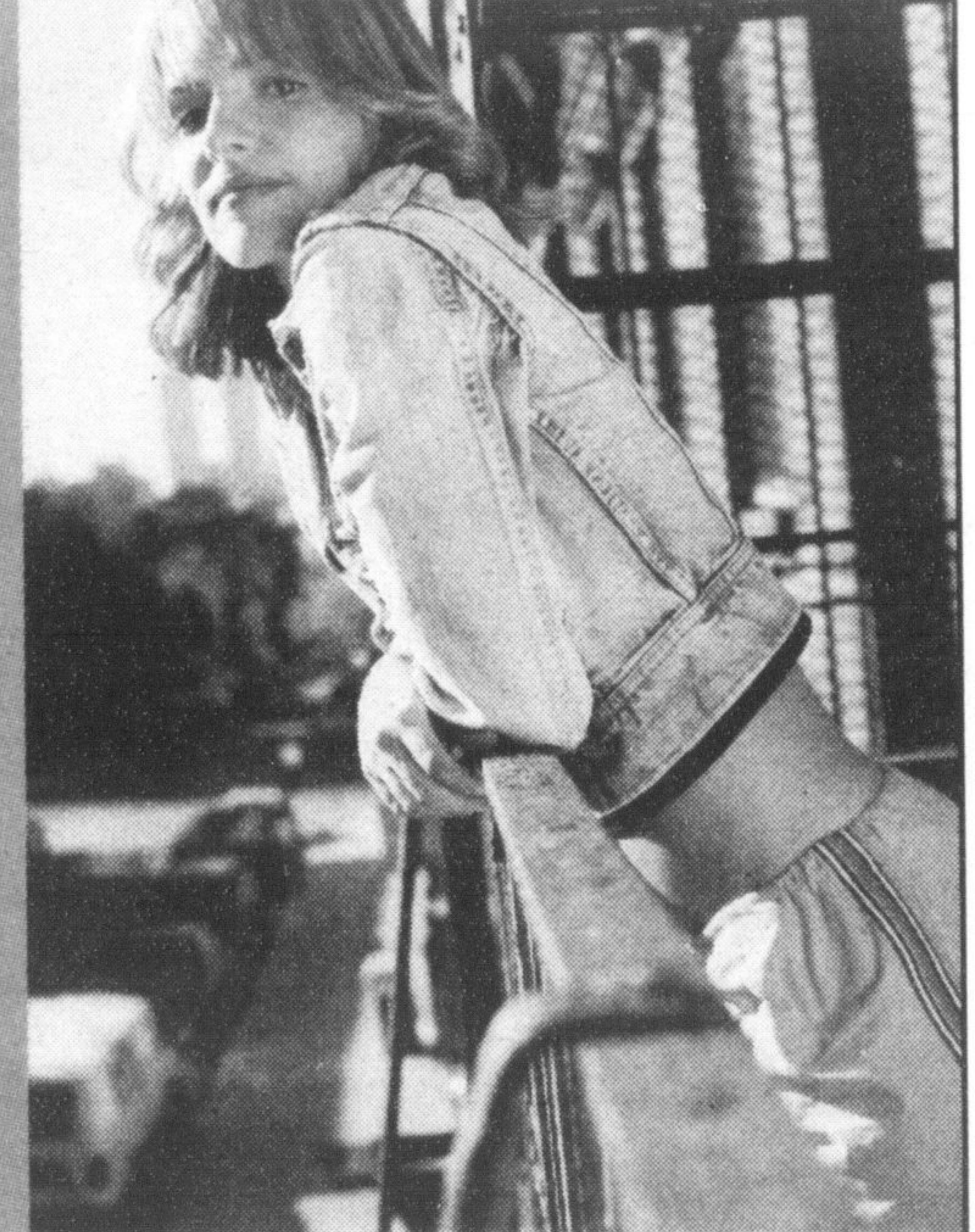
- 2.4L 4 CYL 16V Dual VVT engine with Continuously Variable Automatic Transmission • Fog Lamps
- AM/FM CD Radio • Speed Control • Available UConnect Hands-Free Communication • Electronic Roll Mitigation
- Luxury Front and Rear Floor Mats • Next Generation Multi-Stage Front Air Bags • Anti-Lock 4 Wheel Disc Brakes

PURCHASE FOR  
**\$21,688<sup>†</sup>**

LEASE FOR  
**\$289<sup>†</sup>** per month  
for 27 months with  
\$769 down payment.

LEASE APR  
**2.99%**

OTHER 27 MONTH LEASES	
DOWN PAYMENT	MONTHLY PAYMENT
\$0	\$319 <sup>†</sup>
\$1,769	\$252 <sup>†</sup>
\$2,769	\$213 <sup>†</sup>
\$3,769	\$175 <sup>†</sup>



All three vehicles offer a Boston Acoustics® sound system, complete with MP3 compatibility and Music Gate power flip-down rear speakers.



**Now Available\*** The nüvi® 250W by Garmin™  
Now available as an authentic accessory by Mopar!  
A sleek portable navigation system that fits in any vehicle.



Ask about our no charge  
12 month Sirius  
radio subscription.

**ATTENTION**

Existing Chrysler Financial lease customers with Chrysler, Jeep, Dodge leases maturing between April 01, 2008 through June 30, 2008.

To get into a new Chrysler, Jeep or Dodge vehicle, Chrysler Canada will waive your remaining monthly lease payments.\*

VISIT YOUR JEEP® • DODGE RETAILER TODAY.



**Wise customers read the fine print:** \* † ‡ Ω. These limited time offers apply to retail deliveries for personal use only on selected new and unused models. All offers exclude freight (\$1,200), license, insurance, registration, any retailer administration fees, up to \$75 PPSA and applicable taxes. Retailer order/trade may be necessary. Offers are subject to change without notice. See retailer for specific details and conditions. \* The nüvi® 250W by Garmin™ is an available accessory by Mopar. Retail price is \$493. nüvi®, Garmin™ and Mopar are registered trademarks. † Purchase prices apply to 2008 Dodge Caliber SE (24D), 2008 Jeep Compass North 4X2 (26E+NHM) and 2008 Jeep Patriot North 4X2 (26E+NHM). ‡ Lease based on 27 month terms for 2008 Dodge Caliber SE (24D): total lease obligations is \$6,702/\$6,723/\$6,676/\$6,623/\$6,597 with \$789/\$0/\$1,789/\$2,789/\$3,789 down @ 2.99% lease APR. First month's payment, down payment, any retailer administration fees and up to \$75 PPSA are due at lease inception. Kilometers limited to 45,900 for 27 month term; charge of \$0.15/km for excess kilometers. Ω Non-transferable offer applies to retail customers only. Exclusions depend on vehicle currently leased by customer. November Car Pull-Ahead excluded vehicles include: 2007 Dodge Caliber, 2008 Dodge Caliber Base Model (PMDL49) and 2007/2008 Dodge Sprinter. November Ram Pull-Ahead excluded vehicles include: 2007/2008 Dodge Caliber & Sprinter, 2007/2008 Jeep Compass & Patriot. Some conditions apply. See retailer for details. © 2007 SIRIUS Satellite Radio Inc. "SIRIUS", the SIRIUS dog logo, channel names and logos are trademarks of SIRIUS Satellite Radio Inc. Sirius 12-month subscription is paid for by Chrysler Canada Inc. ® Jeep is a registered trademark of Chrysler Canada Inc.

FINANCING PROVIDED BY  
Chrysler Financial

