

Hunt

CHRYSLER Jeep

Prices Are Falling

On All 2007 Models!



Now Is The Time To Rake Up
A FABULOUS DEAL!
No Reasonable Offer Refused!



2007 CHRYSLER SEBRING



2007 CHRYSLER PACIFICA



2007 JEEP PATRIOT



2007 DODGE CHARGER



2007 DODGE RAM 4X4

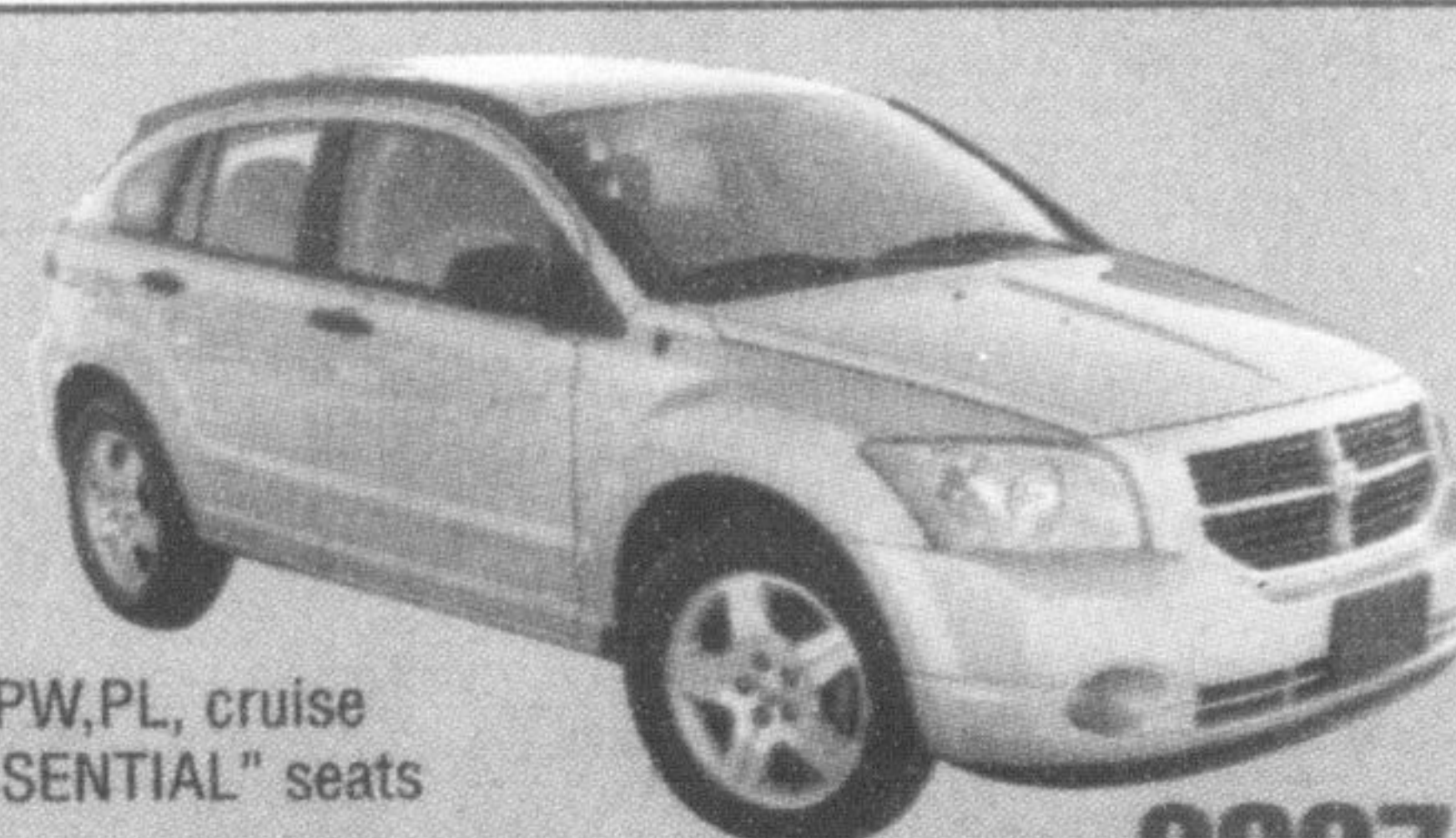


2007 DODGE NITRO



2007 CHRYSLER PT CRUISER

M.S.R.P. \$18,110
Dealer Allowance -250
Discount -465
FALL SALE PRICE **\$17,395†**
PLUS 0% FOR 36 MONTHS



2007 CALIBER SXT

OR
1.8L, 5spd, air, PW,PL, cruise control, "YES ESSENTIAL" seats Stk# SR86.
Lease For Only \$270 PER MONTH +TAXES** **\$0 DOWN** **Interest Rate 5.99% 48 MONTH TERM**

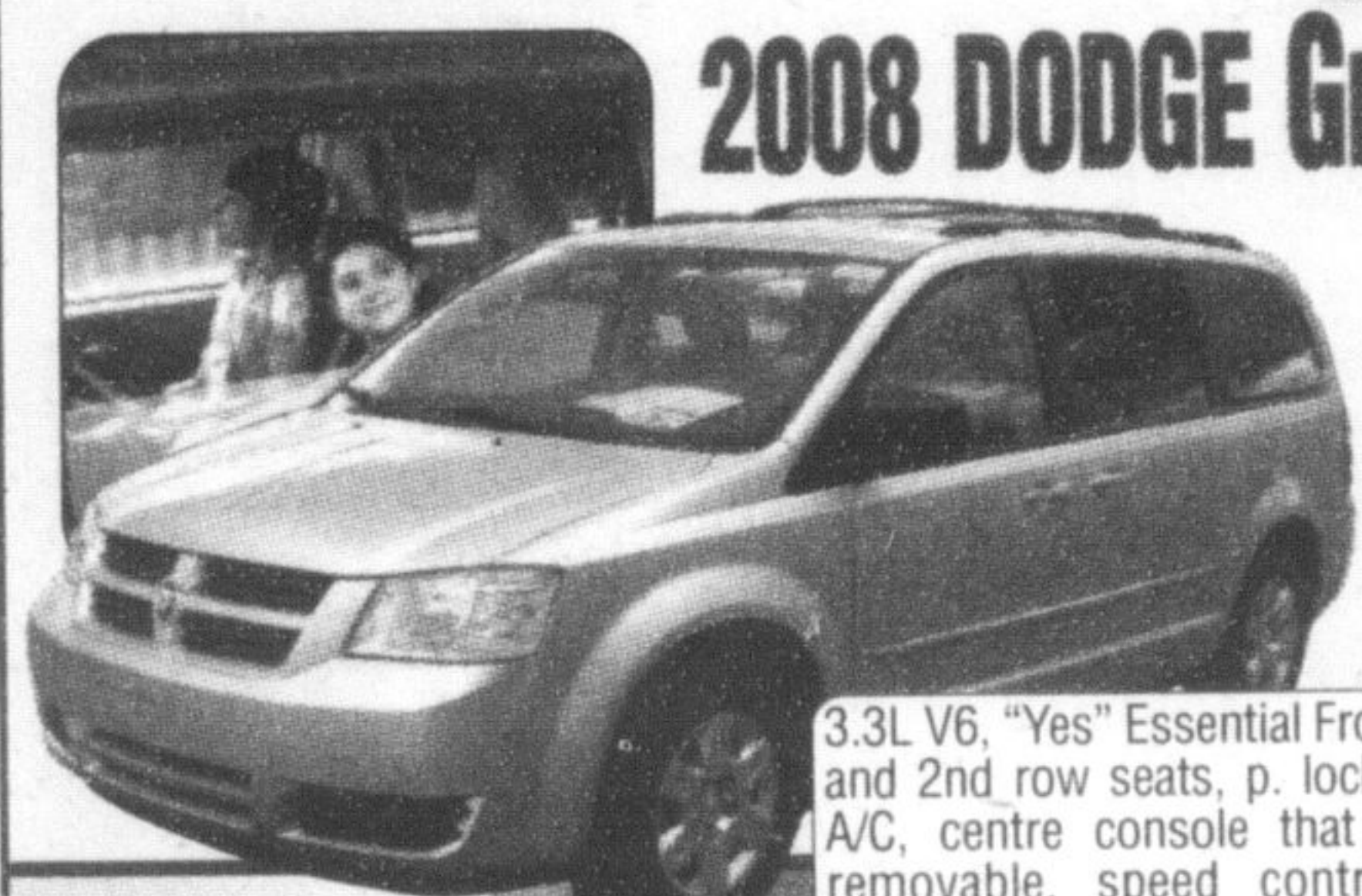
M.S.R.P. \$30,785
Dealer Allowance -4,250
Discount -1,547
FALL SALE PRICE **\$24,988†**
PLUS 0% FOR 48 MONTHS



2007 CHRYSLER 300

OR
27H PKGE, 3.5L 6cyl, air, p. driver seat, p. windows & locks. Stk# SL02.
Lease For Only \$379 PER MONTH +TAXES** **\$0 DOWN** **Interest Rate 4.89% 48 MONTH TERM**

Introducing the All New **STOW'N/GO**



2008 DODGE Grand Caravan 'SE'

3.3L V6, "Yes" Essential Front and 2nd row seats, p. locks, A/C, centre console that is removable, speed control. "PLUS" all new 2nd row power windows! STK #RG08

SPECIAL Lease Interest Rate of **1.79%** FOR 24 MTHS
\$1000 New Chrysler CASH

FUEL UP FOR LESS ON US!
+ \$1,000 CASH ALLOWANCE ON GRAND CARAVAN SE

PETRO-CANADA
10¢/LITRE
Preferred Price

The New **CHRYSLER CORPORATION** has added **AIR CANADA** and **PETRO-CANADA** employees qualify for **EMPLOYEE PRICING!**
*Air Canada Employees, Families & Retirees are eligible for Employee Pricing Discounts. Must provide Control Number to qualify. PetroCanada Corporate Employees only qualify for Employee Price Discount and must provide Control Number to qualify. See dealer for details.

ATTENTION!
GET OUT OF YOUR LEASE **NOW!!!**
Gary wants your leased vehicles back NO MATTER which Chrysler Dealer you leased with. If your Chrysler Financial Lease expires between NOW & MARCH 31st, 2008... Gary will "WAIVE ALL YOUR REMAINING PAYMENTS!"
* Excludes Ram PickUps

Hunt

Chrysler Jeep

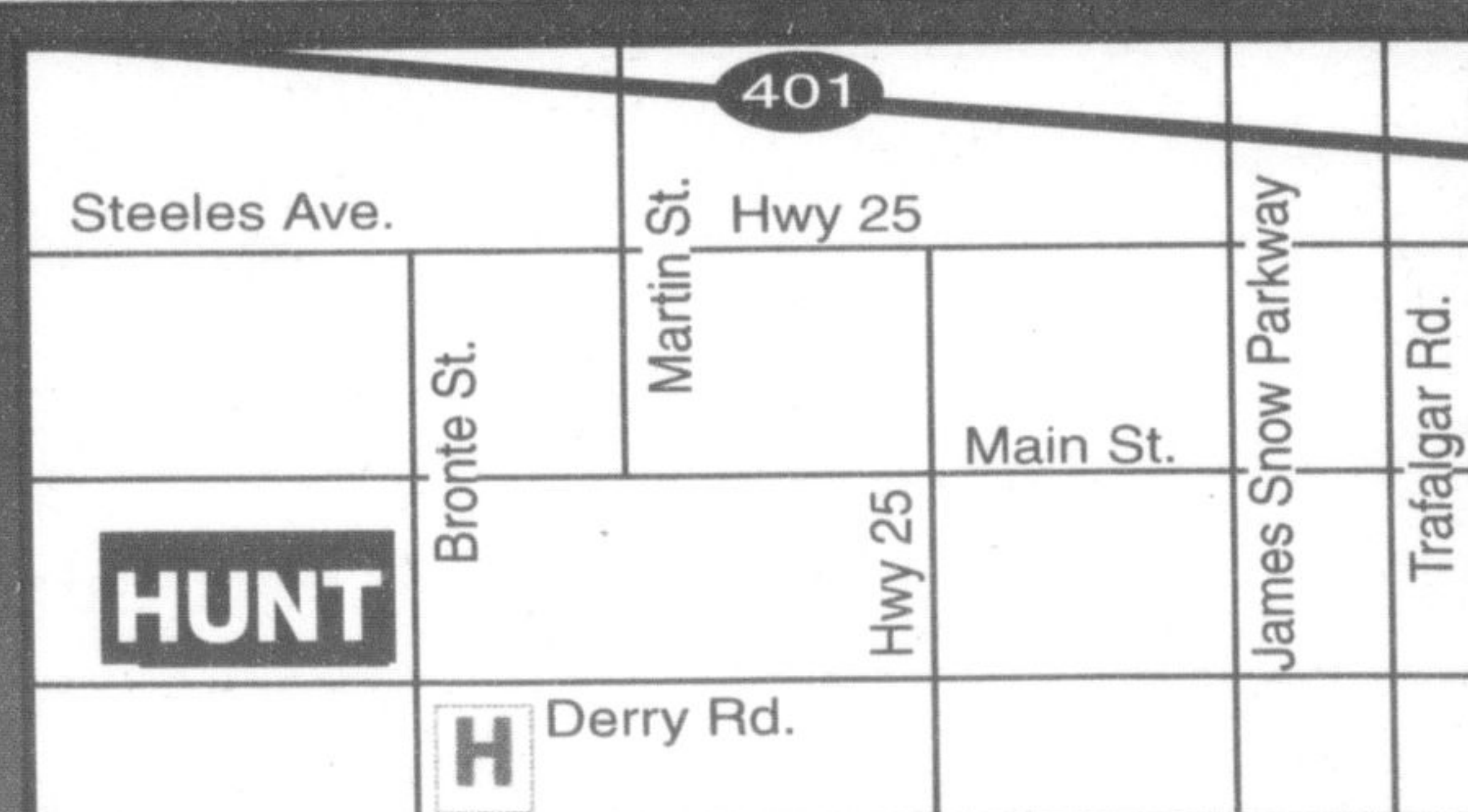


Mike Todd Robbie John Wes
Milton: (905) 876-2580
Toll Free: 1-866-848-8816
Email: sales@huntchrysler.com

Drive that extra mile!
We will make you smile!

Ask about our 12-Month Vehicle Return Policy™. It's the most intelligent way to buy a vehicle today.
Don't lock yourself in. See dealer for details.

WALKAWAY
PROTECTION FOR AUTOMOTIVE FINANCING
walkawayprotection.com



SALES: Mon-Thurs 9-9, Fri. 9-6, Sat. 9-5
SERVICE: Mon-Fri 8-5, Tues. 8-8, Sat. 8-12

SERVICE/PARTS:
www.huntchrysler.com
www.huntchrysler.ca

Your **FIVE STAR** Dealership

500 BRONTE ST. S., MILTON

† Destination charge, airtax, admin fee, GST, PST, lic fee, gas tax due on delivery. †† Borrowing 20,000 @ 0% for 36 mth monthly payment \$555.55 interest charge 0 OAC.
** Leases base on 20,400 kms per year, 15¢ per excess km, no buyback requirement OAC. Destination charge, airtax, lic fee, GST, PST & 1st payment due on delivery.