

COMMERCE Monthly Newsletter

n.ca www.escarpmentcountry.on.ca

New Members

WELCOME to the following Milton and area-based businesses as new Chamber members. We invite you to participate in our monthly event and encourage you to take part in one or more of the Chamber committees. *Denotes Escarpment Country™ Tourism Partner

ANITA TAYLOR, BARRISTER & SOLICITOR
Milton, ON
Contact: Anita Taylor,
Tel: 905-878-8282
Fax: 905-319-8295
Real Estate and Civil Litigation

CAMBRIDGE INSURANCE BROKERS LTD.
(Mississauga)
405-2000 Argenta Rd, Plaza V
Mississauga, ON L5N 2R7
Contact: Rakesh (Rocko) Patel, Personal Lines Sales Executive
Tel: 905-820-1234
1-877-820-1234
Fax: 905-820-6264
www.cambridgeinsurance.on.ca
We provide insurance services for auto, home, tenants, condo, business, liability, travel life and financial services. Also providing quick, reliable claims services 24 hours a day, seven days a week.

INVESTORS GROUP - JOHN-PAUL DESY
Milton, ON
Tel: 905-864-6083
www.investorsgroup.com
I understand the importance of family and in providing security for loved ones. My mission is to build long lasting relationships with my clients and to provide them with a comprehensive financial plan to help them build the financial security they desire and deserve.

LUCIEN'S ACCOUNTING & INCOME TAX SERVICES
Milton, ON
Contact: Lucien Williams, Owner Manager
Tel: 905-878-0192
Fax: 905-878-2050
My services include financial statements, T-2 corporate tax returns, T-1 personal returns, bookkeeping and government reporting. I am a professional advisor of Quickbooks and am able to set-up new clients.

MILTON TOASTMASTERS
Royal Canadian Legion, Upper Hall
21 Charles St.
Milton, ON
Contact: Diana Pastore, V.P. Membership
Tel: 905-693-1101
Milton Toastmasters is a non-profit organization which gives its members the opportunity to develop and improve their public speaking and leadership abilities through local club meetings, leadership roles, training workshops and speech contests. It is done in a mutually supportive and positive learning environment, which fosters self-confidence and personal growth.

MILTONSEARCH.COM
Milton, ON
Contact: David Brown, Owner
Tel/Fax: 905-693-8652
www.miltonsearch.com
Milton, Ontario's homepage, featuring Milton News, sports, weather, community information, community calendar, free classified, blogs, forums, photo gallery, business directory and more.

STUDI-O HAIRDESIGN OF MILTON
153 Main St. E.
Milton, ON L9T 1N7
Contact: Omid Ahi, Stylist/owner
Tel: 905-203-0404
Studi-O Hairdesign of Milton is a full service hair studio in downtown Milton.

URS INSURANCE BROKERS
62 Main St. E, Suite 201,
Milton, ON L9T 1N3
Contact: Chris Healy, President
Tel: 1-888-747-2646 ext 2
Fax: 1-866-801-7774
www.ursinsurance.com
An Independent Insurance Brokerage, we serve Milton and the surrounding communities. We offer a full range of insurance products that provide protection for our clients' homes, automobiles and businesses. We represent the highest rated insurance companies and as brokers are able to shop the market and offer our clients the best price and coverage available.

WE DO WINDOW CLEANING
Milton, ON
Contact: Greg Bell, Owner/Operator
Tel: 416-258-9785
Founded in Milton in October 2003, We Do Window Cleaning has steadily built a strong and loyal clientele. The quality of our work is second to one - our commitment to excellence is evident in our work. Serving residential and business needs in the Milton/Halton areas.

WEB NODES - SOFTWARE DEVELOPMENT
Milton, ON
Contact: Ricardo Covo, President
Tel: 647-838-2686
www.webnodes.ca
Web Nodes is a technology enabler, a software provider and implementer. We do custom application development, helping our clients to find solutions for their unique needs.

LOOKING TO CUT FUEL COSTS?

Call Andrea Boyle at the Milton Chamber of Commerce
905-878-0581 for more information

Renewal Memberships

* Denotes Escarpment Country™ Tourism Partner
A special thanks to the following businesses for their continued support.

Angelika Koeth Dr. - Family Care Chiropractor
Arthur Electric Inc.
Bell Canada
Bird Packaging
The Birks Company
Blue Beacon of Canada - Division of CANCLEAN Financial Corp
Bretco Electric Inc.
Centre for Skills Development & Training
Complete Audio Visual Inc.
DeHoog Piano Movers

Durante's Auto Service & Towing
ECNG Energy L.P.
Enterprise Rent-A-Car
Evergreen Crematorium
Fun-Shine Entertainment/Sneezy The Clown
Garth Turner M.P.
Genesis Financial Products Inc.
Gorrud's Auto Group
Haber Blain Insurance Brokers Ltd.
Hawkins Animal Hospital

J. Spurgeon Appraisals
Jim Shaw Accounting Services Inc.
Johnston Maintenance Ltd.
Knead to Balance Massage and Pilates Clinic
M. Putzer Hornby Nursery Ltd.
Milton CruiseShipCenters
Milton Home Hardware Building Centre
Minuteman Press Milton
Moffatt Autoworks Inc.
Parkway Auto Trade

Peel Exterior Maintenance Inc.
Pereira Wilcock Solutions Inc.
Peter Kiewit Sons Co.
Ronald Flannagan QC
The Salvation Army - KHi Community
Scott's Car Care and Rust Check Centre
SHOOT Photographic
Stanmar Consulting
Staples Business Depot
Studio Harmonia
Subway Sandwiches & Salads - Maple Ave
Subway Sandwiches & Salads 24 Hours - Market Drive
Town of Milton
Twiss Lubricants Ltd.
Wasteco
YOUNG DRIVERS/Collisionfree

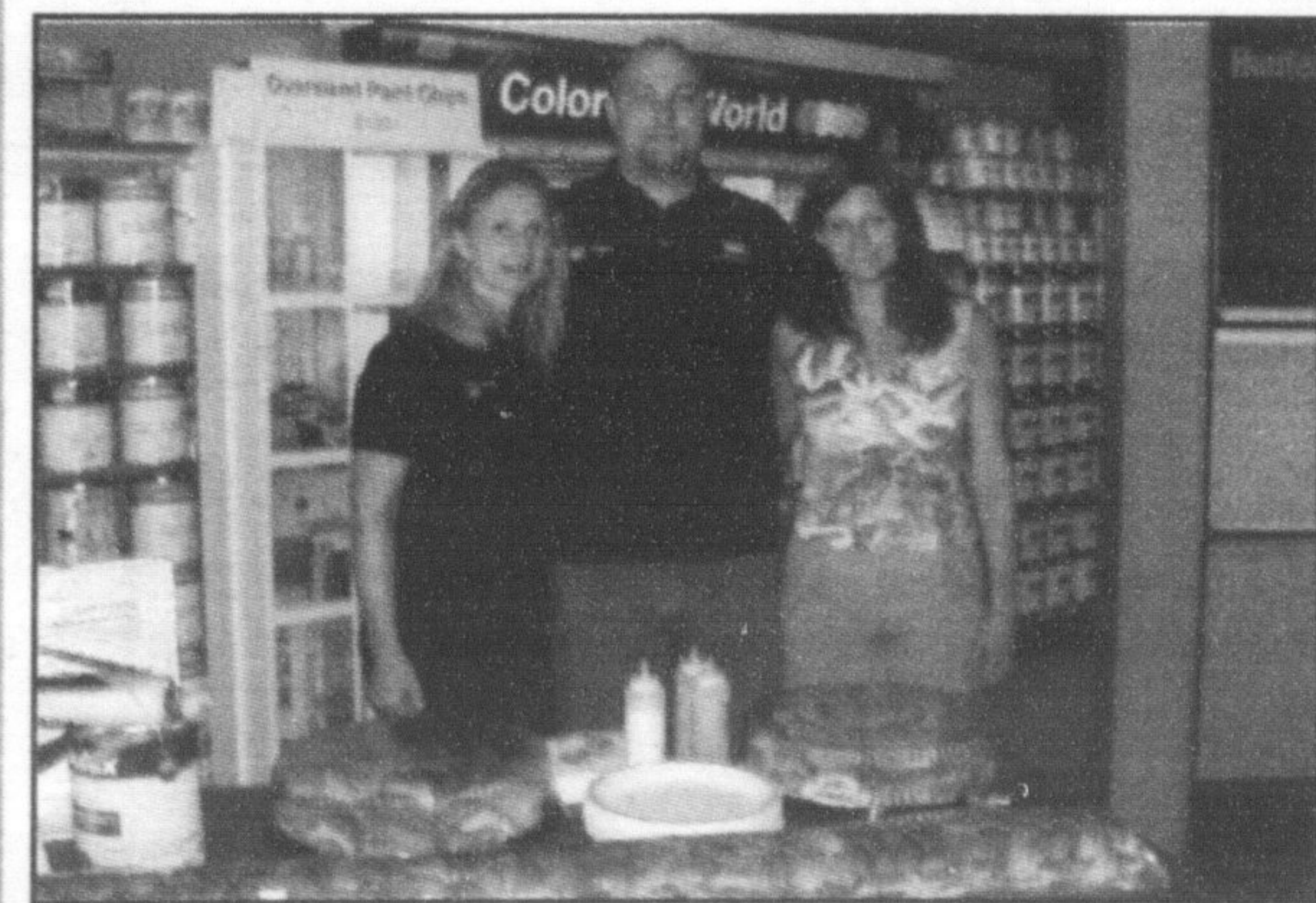


Photo: Julia Vertolli, Michael Vertolli owners of Color Your World and Leanne Krane owner of Subway Sandwiches on Market Drive

August Business After Hours

Color Your World was the venue for the Milton Chamber of Commerce August Business After Hours also co-hosted by Subway Sandwiches & Salads on Market Drive. Michael and Julia Vertolli from Color Your World and Leanne Krane from Subway on Market Street welcomed over 60 guests to the beautiful paint and home décor shop located at 327 Bronte Street South for the August Business After Hours. Guests of the Business After Hours enjoyed delicious Subway Sandwiches and drinks while they networked throughout the evening.

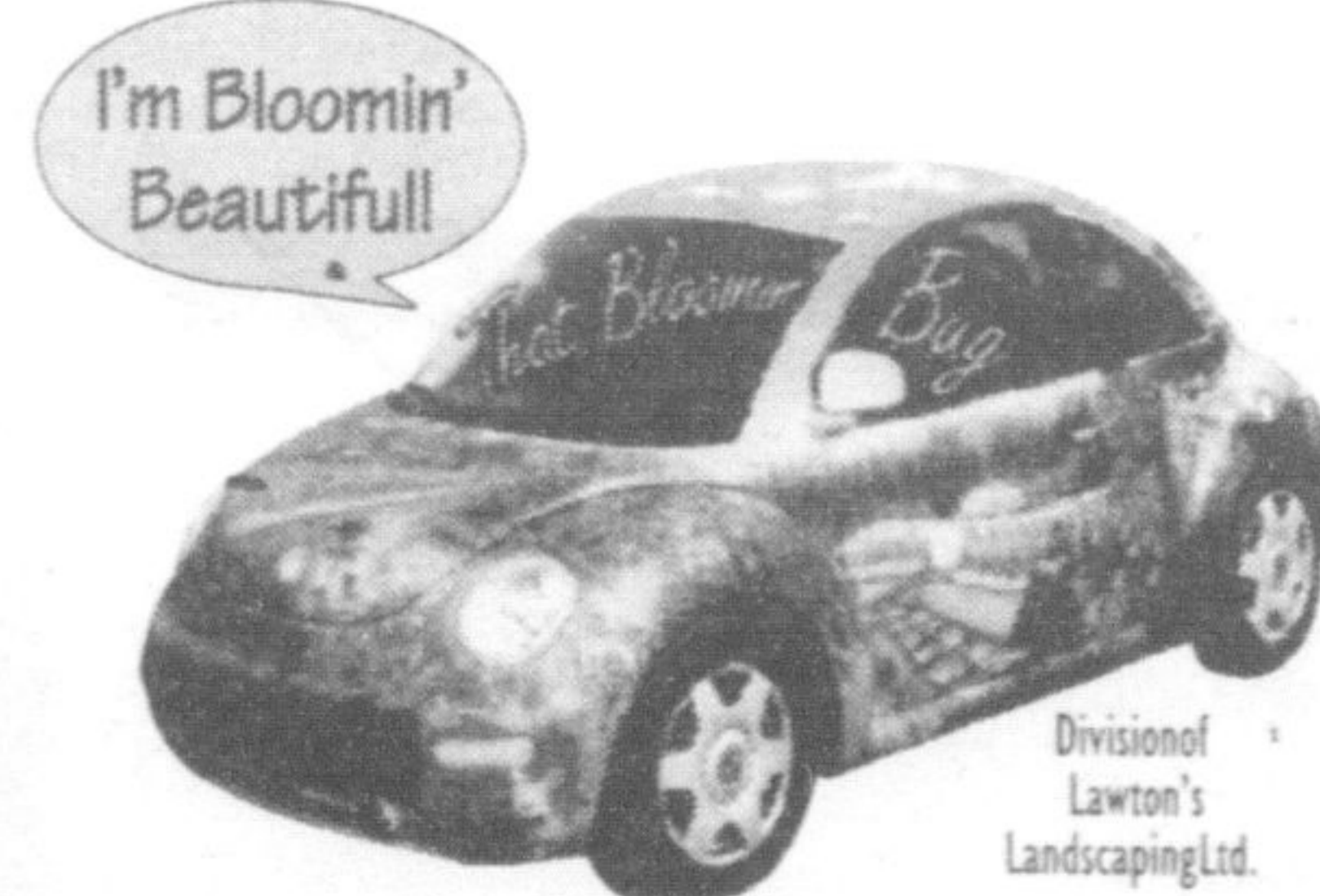
TON, ONTARIO L9T 1P1 905-878-0581 info@chamber.milton.on.ca

7429 Fifth Line, Milton, Right at the east end of Main St.

Taylor Nursery

Soils, Mulch & Aggregates
Flowers * Shrubs & Trees
Garden Decor * Design & Maintenance

For 32 years...Your Town & Country Gardening Centre * 905.876.4100



Design & Print Centre

100 Nipissing Road,
Unit 9
Milton, Ontario L9T 5B2
(Behind Milton Mall)

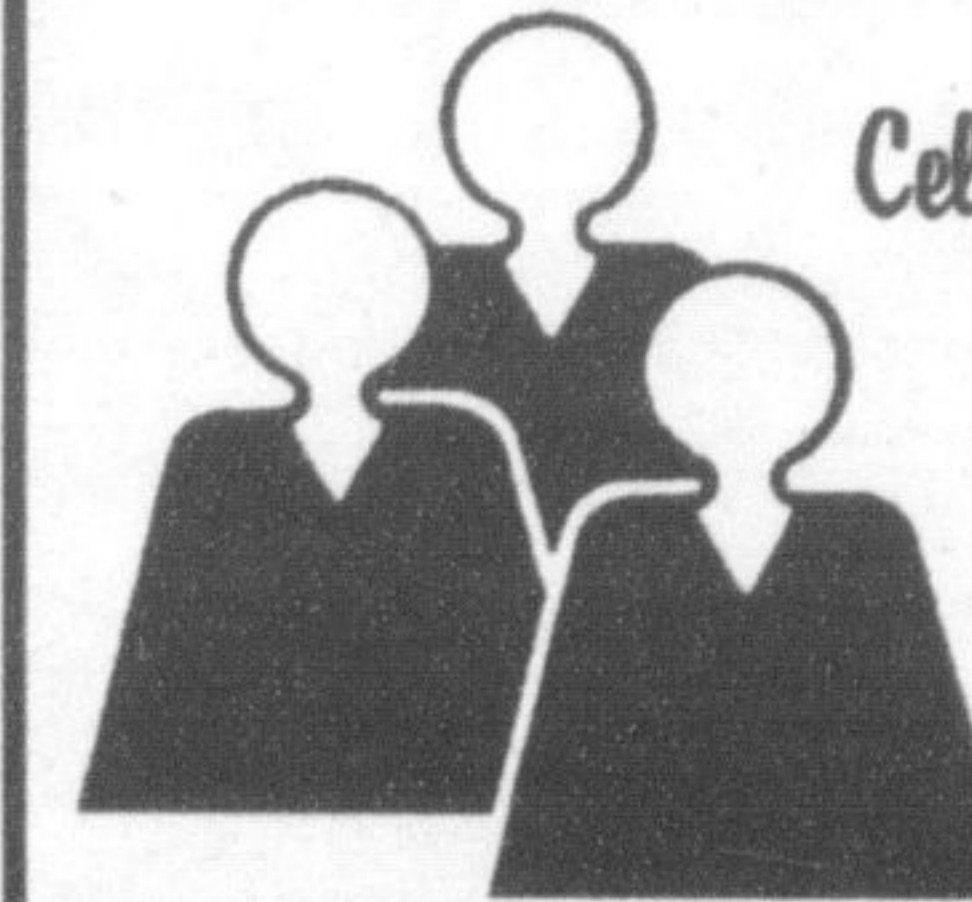
- Graphic Design & Typesetting
- Multi-Colour Printing
- Finishing & Bindery
- High Speed Copier
- Full Colour Laser Copier
- Wide Format Copier

Tel: 905-876-4647
Fax: 905-876-1100

FREE PICKUP & DELIVERY

ROBERT (PIE) LEE INSURANCE AGENCY

Life - Disability - Annuities - RRIFs - LFs - RRSP's - Mutual Funds (M.S.I.L.) - RESP's



Celebrating 32 years of "Home Town" Business

Bob "Pie" Lee
bob@robertleeinsurance.com

Kim Mitchell
kim@robertleeinsurance.com

245 Commercial St. Milton L9T 2J3
OFFICE 878-5786 FAX: 878-3692

FIRST PROFESSIONAL Collision & Paint

MILTON'S FULL SERVICE COLLISION CENTRE
Call Steve Boers

706 Main Street, East
Milton, ON (905) 876-1116

We will exceed your expectations

OPEN SATURDAYS 8:00am - 12 noon
For after hours appointment call (905) 876-8787

SKD COMPANY

375 Wheelabrator Way, Milton

(905) 875-1427

(416) 798-7099

Miltowne INSURANCE AGENCY INC.

working for you

HEALTH, DENTAL AND DISABILITY INSURANCE

Available for as few as one person on Group Rates
Featuring - "Assure" Prescription Card
Group Life & Health Specialist

EXCLUSIVE AGENT FOR THE CHAMBER OF COMMERCE PLAN

P.O. Box 152, Milton, ON L9T 4N9
Roger Lauzon 905-878-1633 Fax 905-878-1671

The Canadian Champion

"Milton's Choice Since 1860"

555 Industrial Drive

905-878-2341

www.miltoncanadianchampion.com

Paying too Much for Insurance?

MILTON CHAMBER OF COMMERCE MEMBERS AND THEIR EMPLOYEES

Save up to 55% on Auto and Home Insurance!

24 Hr Claims Assistance
Open until 8pm on Thursdays

1A-775 Main St E.



Phone 905-876-4607 or Fax 905-876-1001 ING NOVEX