

REPAIRS

to all makes and models of
SMALL ENGINES

- CONSTRUCTION EQUIPMENT • CHAINSAWS
- LAWN & GARDEN



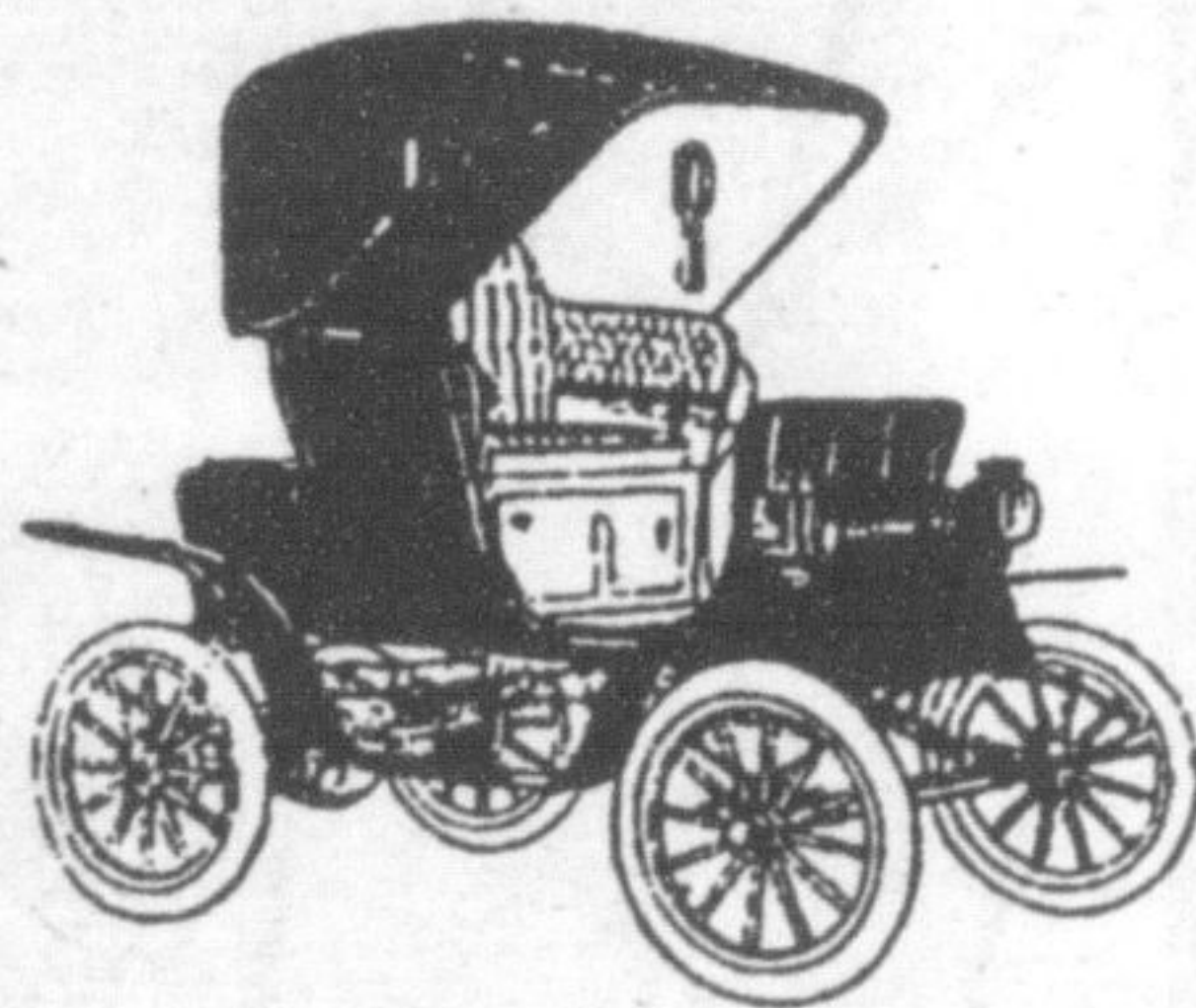
Husqvarna



PICK UP & DELIVERY

HALTON POWER EQUIPMENT
20 MAIN STREET, MILTON
905-875-3286

*"Oldest Family Owned and Operated Business
on Main Street"*



Motor
Trust and Tradition Since 1953
388 Main Street

TAXI
A-1 ROSE TAXI
905-875-1900

A-1 ROSE TAXI
905-875-1900
1-800-595-0296
Call for Reservations
**10% SENIORS
DISCOUNT**

47TH ANNUAL

STEAM-ERA®

Where Your Heritage Comes Alive!

LABOUR DAY WEEKEND
AUG 31ST - SEPT 3RD @ MILTON FAIRGROUNDS

Once again Steam-Era returns to Milton Fairgrounds for its 47th Annual show produced by the Ontario Steam & Antique Preservers Association. Founded in Milton the first show was held in Milton Fairgrounds, Labour Day Weekend 1961 and has grown to be considered, by far, one of the best and most complete historical shows.

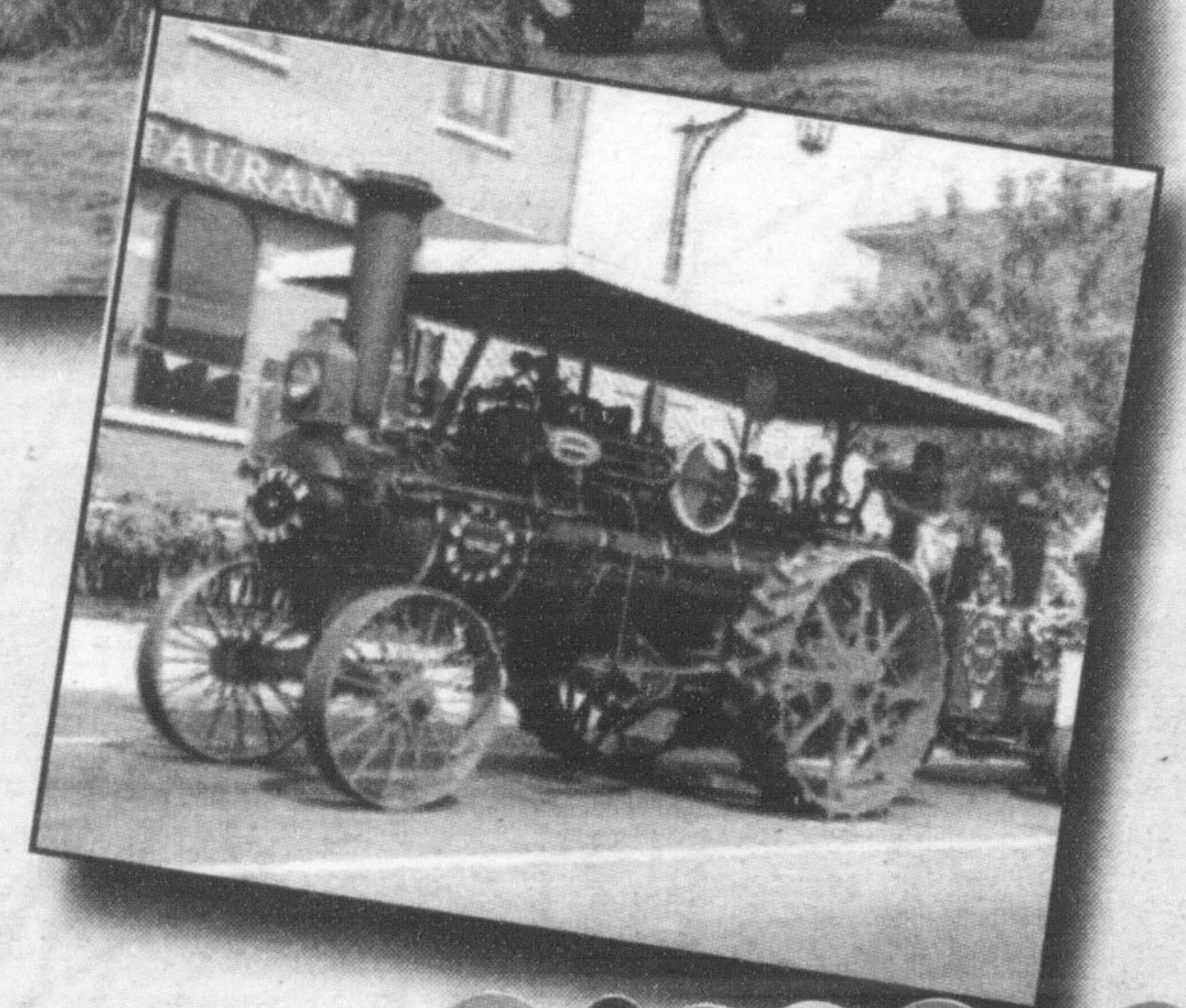
This year's show opens to the public 8am Friday Aug 31 and continues thru Saturday, Sunday and Monday. Outside exhibits will include displays of antique cars, models, all sorts of antique tractors and of course the steam engines. Displays will be in operation daily including a Steam powered sawmill, shingle mills, threshing demonstrations and daily competitions of threshing and operator skills.

Buildings will feature ladies crafts with all sorts of knitted & sewn crafts for sale. The model building houses a vast array of hand made scale models including small engines of steam and gas variety, scale locomotives and toys. Under the Grandstand features antiques displayed by club members and the toy building has vendors with all sorts of collectable toys and souvenirs for sale. An outside flea market & "Trading Post", as it is known at Steam-Era, could contain just about anything from household antiques to auto parts and even a steam engine or two for sale. Treasures abound for the collectors!

This years feature Theme is "The Evolution of the Gas Engine" and its role in agriculture. A special display of the earliest gas engines showcasing their pioneering designs and the evolution of their improvements over the early years of development to more modern types we take for granted today. See all sorts of pioneering machines of our ancestors run by some small and some not so small engines putting away on gas, kerosene and even just hot air.

Kids activities include rides on the model trains, pedal tractor pulls at the stage, log sawing at the grandstand and "Jack Russell" dog races this year are sure to be a crowd pleaser for young and old. The grounds people mover, usually pulled by one of the many steam engines, will be in operation. Rides are free and it stops at all the areas of feature displays in operation.

Saturday at 12:15pm, the Steam-Era "Downtown Parade" begins from Main Street & Commercial streets following the Farmers Market and makes its way through down town Milton back to the fairgrounds. The Grand opening is at 4pm during the daily parade of equipment. Saturday evening at 7:30pm features the ever popular "Country Western Talent Contest" at the Grandstands. A corn roast with corn steamed by the barrel with live steam from a steam engine is always popular. Sunday at 5:30pm Steam-Era hosts a mini lawn tractor pull. (No one cuts grass with these little hot rods!) At 7:30pm after the pulls, Country Western tribute band "LONG TYME FORGOTTEN" appears live on stage. Food is available in the food court from a variety of service groups. The corn roast is ongoing every night and for the early risers coming to the show there is a home cooked "Breakfast Under the Grandstands" open to the public as soon as the gates open at 8am until 11am. You won't be disappointed.



Adult admission is \$6.00 on Friday and \$7.00 Saturday, Sunday and Monday. Children under 12 with an adult are free. An adult weekend pass can be purchased for \$15.00 if you wish to come more than one day or evening. Entrances are at Thomas St. and at Robert St. Visit www.steam-era.com online for more information. There is entertainment for everyone at Steam-Era "Where our Heritage Comes Alive"

KID'S ACTIVITIES

- Pedal Tractor Pulls
- Log Sawing
- Bag Tying Competition
- Junior Talent Contest Saturday at 1 p.m.

47TH ANNUAL

STEAM-ERA®

www.steam-era.com

Where Your Heritage Comes Alive!

LABOUR DAY WEEKEND
AUGUST 31ST - SEPTEMBER 3RD @ MILTON FAIRGROUNDS

SAT. SEPT 1 @ 7:30 PM

**COUNTRY &
WESTERN
TALENT CONTEST**

SUN. SEPT 2 @ 5:30 PM

**MINI
TRACTOR
PULL**

SUN. SEPT 2 @ 8:00 PM

**"LONG TYME FORGOTTEN"
COUNTRY WESTERN
TRIBUTE BAND**

**4 DAYS
ENDING ON
LABOUR DAY**
Corn Roast
Every Night!

ADMISSION

Gates open at 8:00am
FRIDAY
Adults \$6.00
SAT. SUN. MON.
Adults \$7.00
Child 12 & Under
With Adult . . . FREE
Parking . . . \$2.00
Admission includes evening
Grandstand shows

