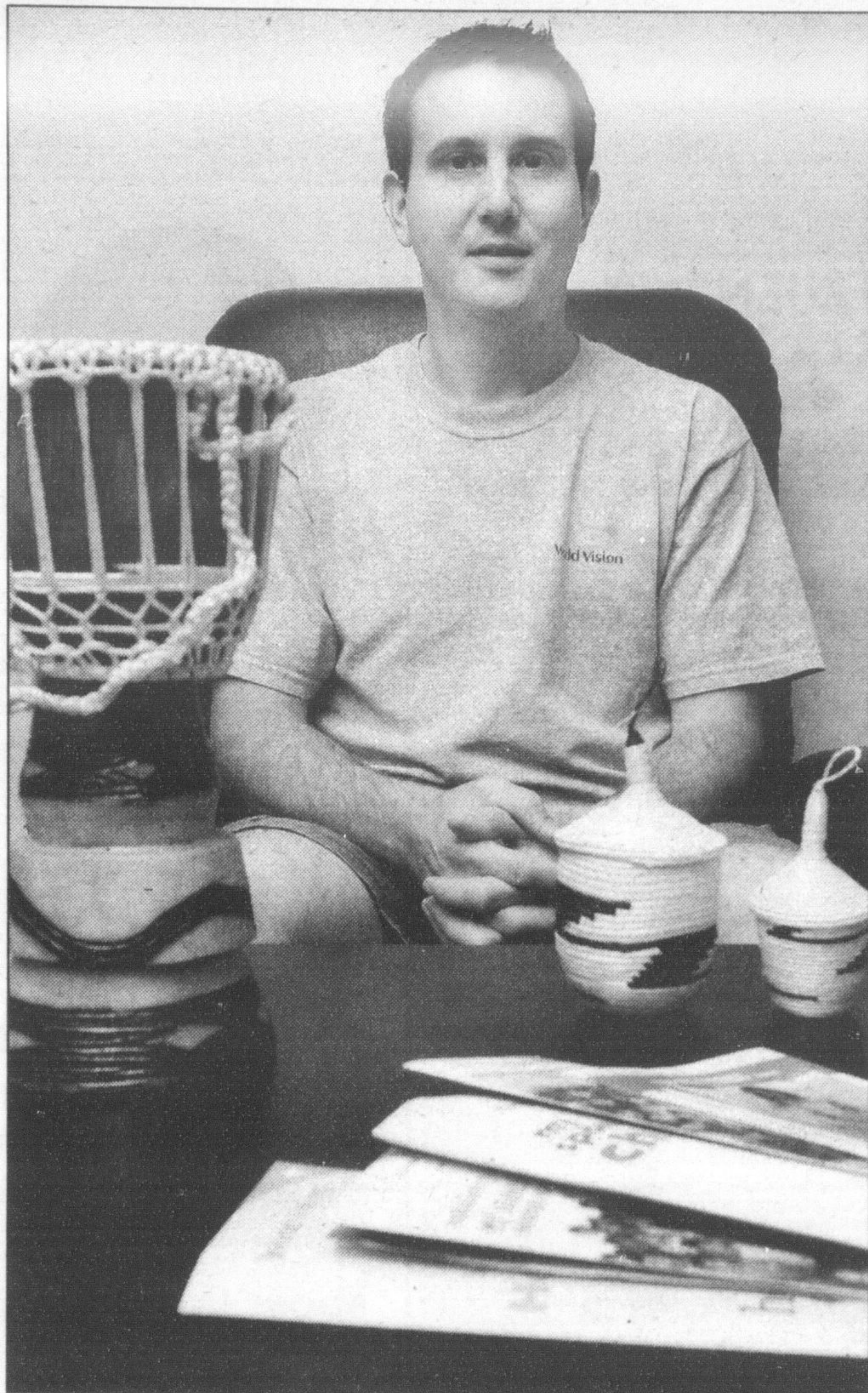


# Double keeps busy getting his goodwill message out there



MIKE IVANIN / SPECIAL TO THE CHAMPION

**KEEPSAKES:** Greg Double displays some of the souvenirs from his trip to Rwanda.

• see LOCAL on page A8

describe the difference in lifestyles.

"How can we justify getting a new TV or computer when that money should be saving someone's life?" Double asked.

It's frustrating that so many people just don't seem to care, he said, adding he has to remind himself that many are simply oblivious to the needs half-a-world away.

Since his return, Double said he's been doing all he can to get the mes-

sage out by giving presentations around town at churches and schools. He's also documenting several of the stories told to him and will be putting them on his blog.

Double and his wife want to ensure each of their children grows up with a heart for others. One of the ways they're doing this is by involving them with the family's sponsored children; they have five.

Their daughter even picked one of them herself, a little girl her age from

Zimbabwe.

"At night we pray, 'Please help get the children and people in other parts of the world the things they don't have,'" her father said.

When he thinks back over his journey, Double said he knows it was meant to be.

"There was a higher hand guiding the whole process."

Stephanie Hounsell can be reached at [sthiessen@miltoncanadianchampion.com](mailto:sthiessen@miltoncanadianchampion.com).



## KIDS COUNTRY

August 4th, 5th & 6th from 12pm-5pm



- Miniature Horses
- Tractor Drawn Wagon Rides
- Ride The Farm Animal Train
- Ride The Saw Horse Animals
- Bean Bag Pitching
- Animal Petting Farm
- Pedal Tri-Cycles
- Heritage Homes
- Heritage School House
- Country Canteen Open

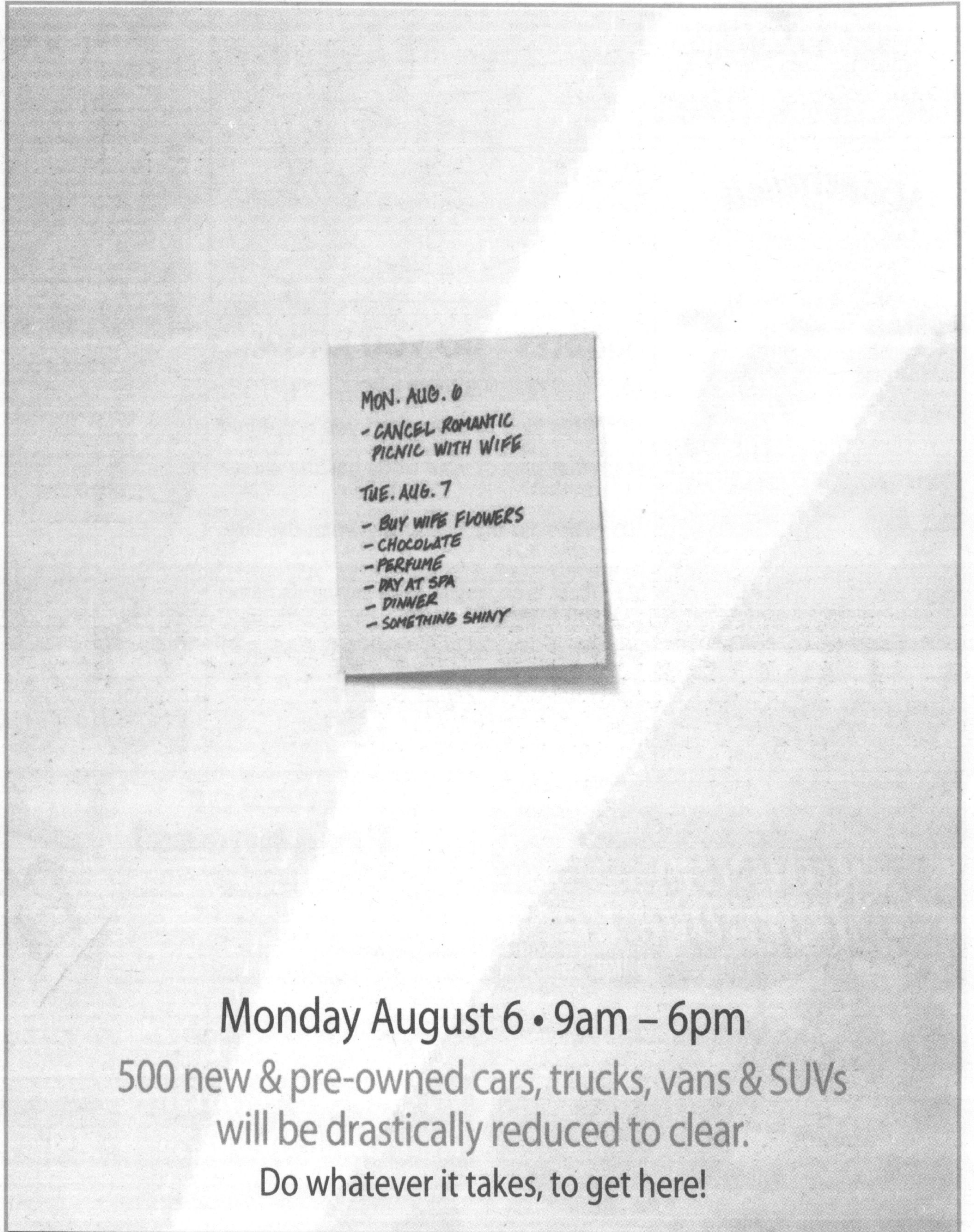
Daily admission: Adults \$7, Seniors \$6, Children \$4  
Family Package: \$20 (some events differ)  
Programs subject to change.

Check out our website for all program updates...

[www.countryheritagepark.com](http://www.countryheritagepark.com)

8560 Tremaine Road, Milton  
905-878-8151 or 1-888-307-3276

Country Heritage Park is open all year for school daytrips, youth programs, corporate events, weddings, group tours & facility rentals. Call for details or email [info@countryheritagepark.com](mailto:info@countryheritagepark.com)



MON. AUG. 6  
- CANCEL ROMANTIC  
PICNIC WITH WIFE

TUE. AUG. 7  
- BUY WIFE FLOWERS  
- CHOCOLATE  
- PERFUME  
- DAY AT SPA  
- DINNER  
- SOMETHING SHINY

Monday August 6 • 9am – 6pm

500 new & pre-owned cars, trucks, vans & SUVs  
will be drastically reduced to clear.

Do whatever it takes, to get here!

Free BBQ • Bouncing Castle • Clown & Balloons • Face Painting

We will be closed Saturday August 4 & Sunday August 5 to prepare for this event

**GORRUD'S  
AUTO**

Doing our best to find a better car for you  
[gorruds.com](http://gorruds.com)

1 800 617.4025  
400-410 Steeles Ave.  
Steeles/HWY25

**MILTON TOYOTA**

That's my Toyota Place! [mytoyotaplace.com](http://mytoyotaplace.com)