

BUSINESS

Bronte St. medical building construction underway

Will include six family doctors

Construction recently got underway on the new Milton Professional Building, which will soon be home to Milton's Primé Care Family Health Team.

The facility on Bronte Street South will house the team that's comprised of six family doctors, five nurses, two nurse practitioners, a mental health counsellor, registered dietician and psychologist.

Upon completion of the building later this year, the team plans to continue improving health care delivery in the community. It intends to bring on additional health professionals in the future, including but not limited to pharmacists, physiotherapists, massage therapists, chiropractors, chiropodists and optometrists. These individuals will provide their services at no cost to the team's 12,000-plus patients.

"I'm proud to say that we have turned a major page in improving our patients' local access to affordable, accessible and excellent health care," said Dr. Garnet Maley, who heads up the Prime Care Family Health Team.

The group also anticipates it will offer:

- Minor surgical procedures.
- A variety of free patient education programs and seminars designed to highlight and promote healthy lifestyles.
- Integrated and seamless access to home care services, in collaboration with the Community Care Access Centre.
- A series of chronic disease management programs, in co-operation with the Ministry of Health and Long-Term Care.

In addition, the team plans to increase the operating hours of its Prime Care after hours clinic.



DIGGING IN TO NEW PROJECT: Mayor Gord Krantz (centre) joins Doctor Kin Chung (second from left), Shamim and David Warren and their daughter Nashrin Struck (left) — who are the developers — in the ceremonial sod turning, as a group of invited guests looks on.

GRAHAM PAINE / CANADIAN CHAMPION

WANTED: People to Test Drive an Audéo

Hearing is inversely proportional to your life experience.

The result of a full and active life is often a diminished ability to distinguish high-pitched sounds. Even subtle changes in our sound perception can reduce the clarity of speech and increase the effort required to follow the conversations around us.

Audéo Personal Communication Assistant is a breakthrough for living life to the fullest, bringing back the speech understanding we can start to lose as early as in our twenties. Sleek, stylish and invisible, it is the ultimate high-tech accessory.

If demanding listening situations have become a challenge, it's time to make the simple decision that will keep you in control. It's time to stay connected. It's time to choose Audéo.

For more information call HearSay Speech & Hearing Centre today at **(905) 875-3345**.

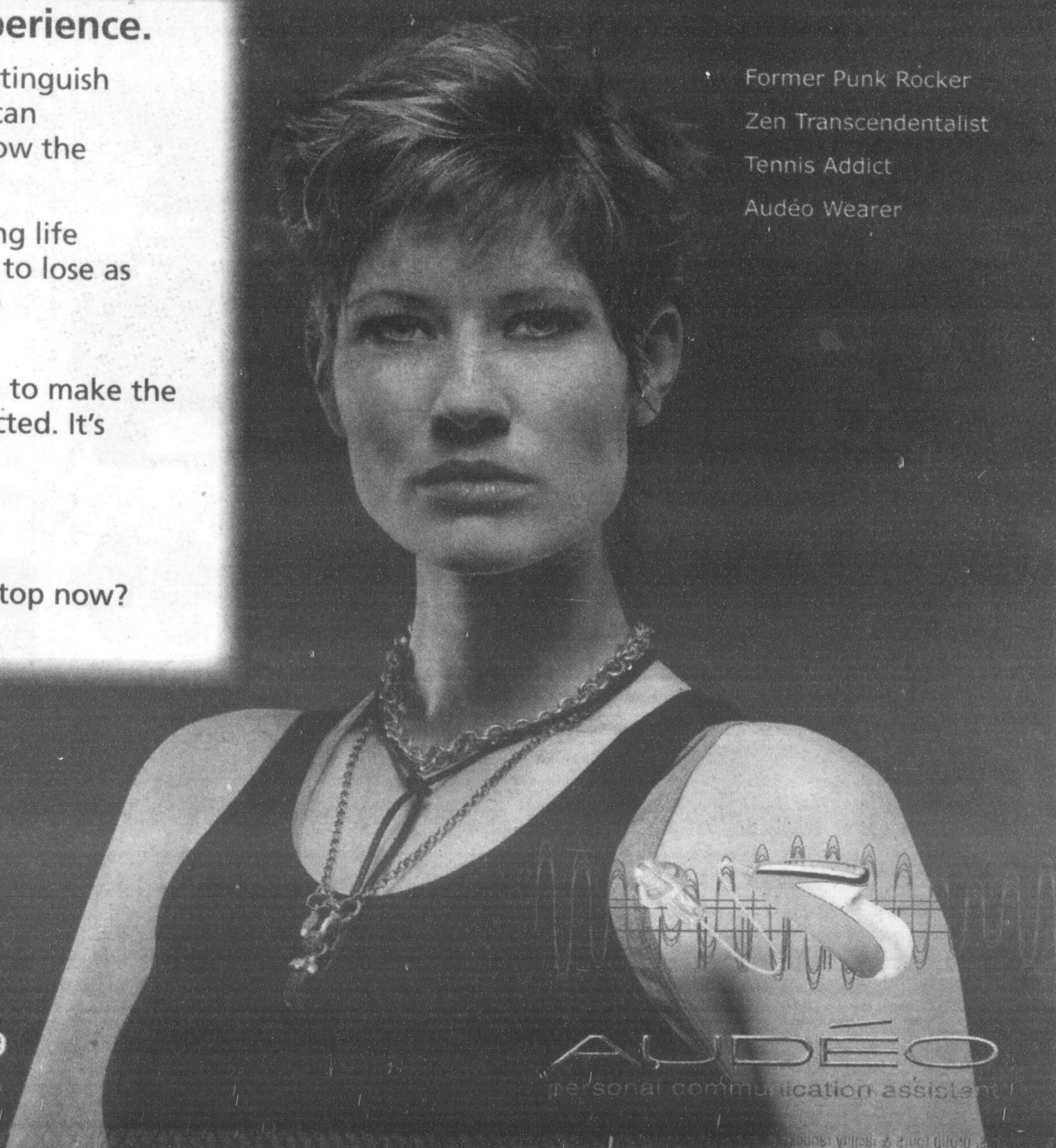
You've always experienced everything the world has to offer. Why stop now?

Audéo — Your life, amplified.

- Former Punk Rocker
- Zen Transcendentalist
- Tennis Addict
- Audéo Wearer

HearSay
SPEECH AND HEARING CENTRE

311 Commercial St., Suite 109, Milton ON L9T 3Z9
905-875-3345



AUDÉO
personal communication assistant