

Region seeking all-day GO train service into Milton

Answer expected early next year

By Melanie Hennessey
CANADIAN CHAMPION STAFF

The Region is pushing for several improvements to GO transportation in Halton, including an all-day train service into Milton.

Halton staff made a presentation to that effect Friday to the Greater Toronto Transportation Authority (GTТА), which will ultimately decide how almost \$12 billion in provincial 'MoveOntario 2020' funds designated for public transit will be spent.

Regional Chair Gary Carr, who also sits on the GTТА board of directors, told the *Champion* that Halton said it would like to see an all-day train service in Milton and

Georgetown and a third track added to the Burlington/Oakville line.

"Amongst the concerns of people in Halton, transportation is one of the big issues," said Carr.

In addition, he said Halton asked for a bus rapid transit service on Hwy. 407.

No decisions were made at the GTТА meeting on the projects. The authority is expected to finalize its plans and report back to the Province early next year on its long-term strategy for transportation in the GTA, including MoveOntario projects.

The GTТА's mandate is to ensure all levels of government work together to develop a long-range transportation plan

in consultation with a broad range of stakeholders.

The agency is responsible for regional transit and transportation planning, purchasing transit vehicles on behalf of municipalities, the future management of GO Transit and ultimately the operation of the GTA fare card system for Greater Toronto and Hamilton.

The MoveOntario 2020 initiative aims to improve transit service in the GTA. It includes 52 projects and calls for 66 per cent of them to be completed by 2015 and 95 per cent of them by 2020.

It's expected that the improvements will result in 800 million new transit trips per year and reduce the number of car trips in the GTA by 300 million.

Suspect keeps his head down

• from BAIL on page A1

the courtroom, Bakhsh sat hunched over with his elbows on his knees and his head down. When his case was addressed, he stood but continued to look down.

Bakhsh has been charged with two counts each of impaired driving causing death and dangerous driving causing death, as well as one count of

refusing to provide a breath sample.

The charges are in connection with the July 19 deaths of an elderly husband and wife from Rockwood who were waiting for a GO train to pass when their vehicle was struck from behind and pushed into the path of the oncoming train.

Bakhsh remains in custody at Maplehurst Correctional Centre.

LaRose
Italian Bakery & Delicatessen

Bakery Special

Kaisers 22¢ or \$2.49 doz.

Fresh Bread and Buns Baked daily 7 days a week!

Delicatessen

Brandt's Honey Maple Ham

88¢ /100 gr OR \$3.99/lb

Brandt's Kolbassa Meatloaf

88¢ /100 gr OR \$3.99/lb

San Daniele Mortadella Classica

99¢ /100 gr OR \$4.49/lb

Max Meat's Pepperseed Salami

\$1.49 /100 gr OR \$6.81/lb

Fresh Produce No. 1 Grade

Product of Ontario **Celery**

69¢

Product of USA **Black Plums**

79¢

Product of ONTARIO **English Cucumbers**

99¢

SPECIALS IN EFFECT FROM TUESDAY JULY 31ST TO MONDAY AUGUST 6TH. WHILE QUANTITIES LAST.

327 Bronte Street S. • White Oaks Plaza
905-875-0303

REGULAR STORE HOURS
Mon.-Thurs. 8:30 am - 7 pm
Friday 8:30 am - 8 pm
Saturday 8:30 am - 6 pm
Sunday 9:00 am - 5 pm

Bronte St.
Derry Rd. X Main St.

Wallace Pontiac presents...

NATIONWIDE CLEARANCE EVENT

0% Purchase Financing up to 60 mths. on Virtually All 2007s!

BRAND NEW 2007 GMC
SIERRA 3500 DURAMAX DUALY

\$61,574 Wallace Price or \$932 Per Month + Taxes with \$2500 Cash Down at 1.9% Lease Rate

BRAND NEW 2007 GMC
SIERRA 2500 DURAMAX SLT

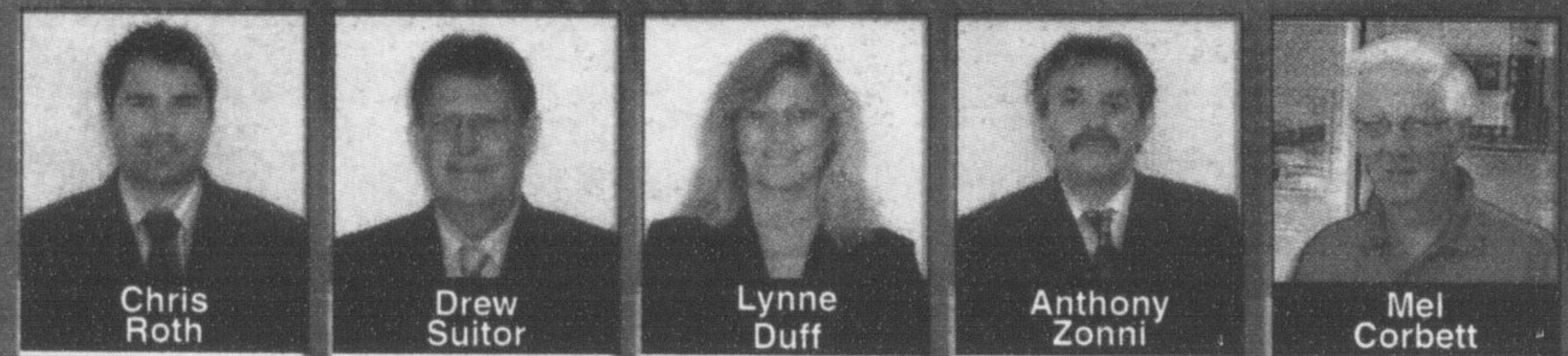
\$59,269 Wallace Price or \$899 Per Month + Taxes with \$2500 Cash Down at 1.9% Lease Rate

BRAND NEW 2007 GMC
SIERRA 1500 EXT. CAB 4X2

\$29,429 Wallace Price or \$359 Per Month + Taxes with \$2500 Cash Down at 0.9% Lease Rate

BRAND NEW 2007 GMC
SIERRA 1500 CREW CAB 4X4

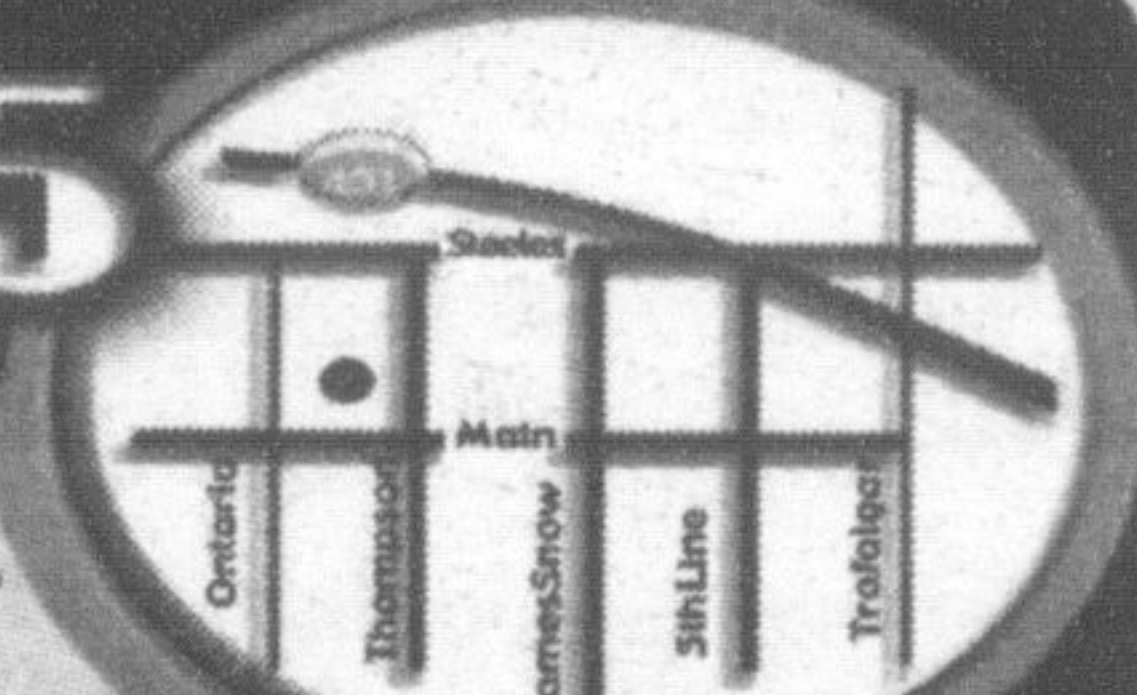
\$36,390 Wallace Price or \$437 Per Month + Taxes with \$2500 Cash Down at 0.9% Lease Rate



Wallace
PONTIAC • BUICK • CADILLAC

905-878-2355

801 MAIN ST. E. MILTON, ONT.
www.wallacepontiac.com • toll free 1-888-878-2354
MON. - THURS. 9:00 AM - 9:00 PM, FRI. & SAT. 9:00 AM - 6:00 PM



*Smartlease are based on 30 mths for Sierras with \$2500 downpayment and include 80,000 km with \$0.15 over and are plus frt., taxes & lic. fees. **Cash prices are plus all applicable taxes, freight, taxes and license fee. All rebates assigned to dealer. Some restrictions apply. +0% eg.: \$20,000 financed over 60 mths. at 0% = \$333.34. C.O.B is \$0, for a total of \$20,000. See dealer for full details. Vehicles are for illustration purposes only and may not be exactly as shown.