

Dateline

• from DATELINE on page B16
 drugs. The group is a member of the Association of Parent Support Groups in Ontario. For more information, call 1-800-488-5666 or visit www.apsgo.ca.

Calling New Parents, a free drop-in program for parents and babies aged 6 months and younger, meets with a public health nurse to discuss parenting and infant care. The group meets at the new Ontario Early Years Centre at 410 Bronte St. from 1:30 to 3:30 p.m. For more information, call (905) 825-6000, ext. 7299.

The Milton Al-Anon group meets at 8 p.m. at St. Paul's United Church, 123 Main St. E., for family and friends of alcoholics.

Milton District Hospital holds a one-on-one breastfeeding clinic with a certified lactation consultant from 9:30 to 11:30 a.m. For more information or to make an appointment, call Jill Hicks at (905) 878-2383, ext. 7610.

The Milton Seniors' Activity Centre, 500 Childs Dr., holds bingo at 1:30 p.m. and its Downsizers Weight Loss Club at 10 a.m. Billiards takes place from 9 a.m. to 9 p.m. The cost for each activity is \$2 for members and \$4 for non-members. Evening Bid Euchre takes place at 7:30 p.m. The cost is \$2.50 for members and \$4.50 for non-members. For more information, call (905) 875-1681.

Wednesday July 25

The Canadian Red Cross holds a

babysitting course for youths aged 11 and older from 8:30 a.m. to 3:30 p.m. at Holy Rosary School, 141 Martin St. The cost is \$50, which includes a manual, mini first aid kit and wallet card. To register, call Catherine at (905) 877-4490.

The Salvation Army/Khi Community holds its Run Club at 5:30 p.m. with a 30-minute run. For meeting location and route, call (905) 875-1022.

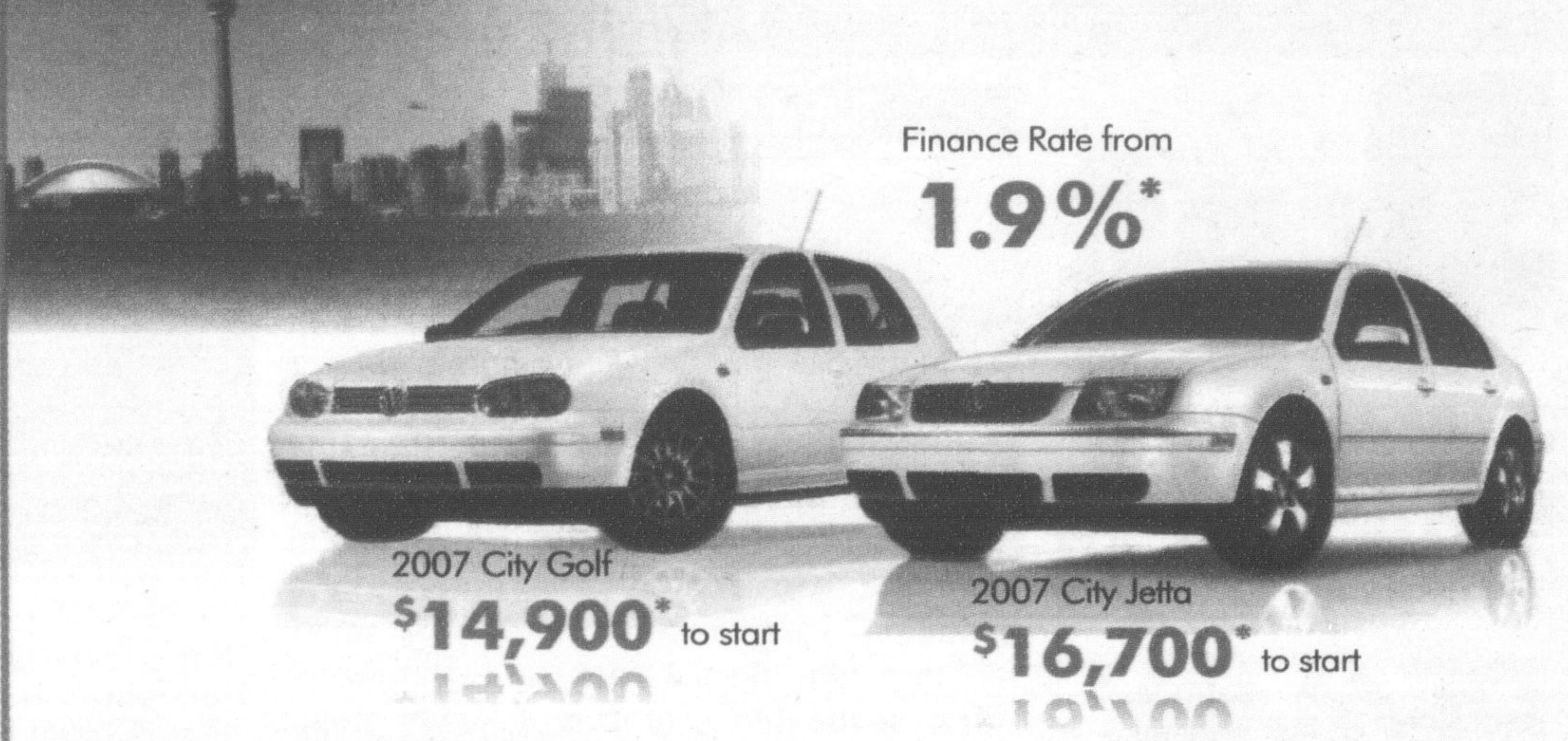
Milton District Hospital holds a one-on-one breastfeeding clinic with a certified lactation consultant from 1:30 to 3 p.m. For more information or to make an appointment, call Jill Hicks at (905) 878-2383, ext. 7610.

A group labyrinth walk takes place at Boston Presbyterian Church, 9185 Third Line/Boston Church Rd., at 7 p.m. Everyone's invited.

The Deck youth centre, 200 Main St. (rear entrance), invites students in Grades 6 to 8 to drop by between noon and 5 p.m. to play a game of pool or just hang out.

The Milton Seniors' Activity Centre, 500 Childs Dr., holds contract bridge at 9:30 a.m., Mexican train dominoes from 2 to 4 p.m. and billiards from 9 a.m. to 9 p.m. The cost for each activity is \$2 for members and \$4 for non-members. For more information, call (905) 875-1681.

Mississauga Volkswagen



Finance Rate from

1.9%*

2007 City Golf
\$14,900* to start

2007 City Jetta
\$16,700* to start

The City. Perfect for the city.

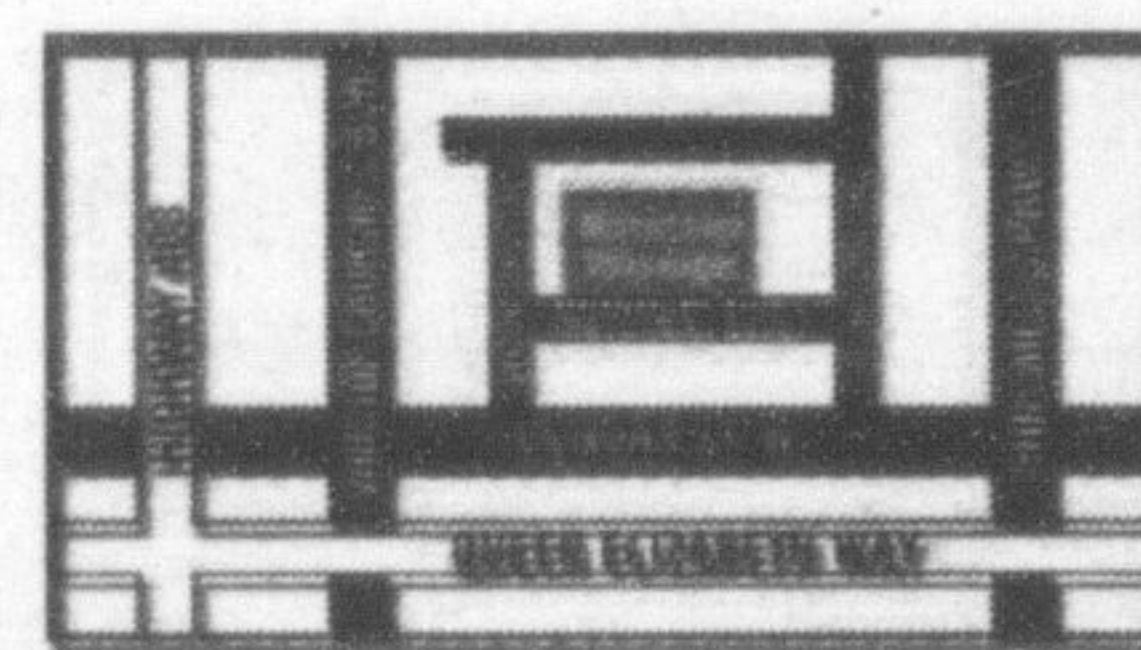
The City just got more affordable. And like you, we don't exactly mind saving a little money here and there. Like printing this ad on newspaper for example. Meet two shining examples of VW design: the **City Golf** and **City Jetta**. Both built with the metropolis in mind. They're nimble enough to turn on a dime, and frugal enough to pick it up when they're through.

College or University Graduate Program. Volkswagen is proud to support recent graduates with \$500 off the finance or lease of a new or certified pre-owned Volkswagen vehicle**

2420 MOTORWAY BLVD., MISSISSAUGA, ON

Tel: 905.569.3233 Fax: 905.569.3022

© 2007 Volkswagen Canada Inc. *Base MSRP is \$14,900/\$16,700 for 2007 City Golf/2007 City Jetta with manual transmission. Vehicle with optional package shown is \$16,500/\$18,300. Freight of \$715, PDI \$635, license, insurance, registration, dealer charges, options, and applicable taxes extra. **Financial plans available through Volkswagen Finance on approved credit. 1.9% offer pertains to 36 month finance terms only on all new 2007 City Jetta. Purchase example: \$20,000.00 finance at 1.9% for 36 months, monthly payment is \$571.98, cost of borrowing is \$591.28, and total to be repaid is \$20,591.28. Down payment may be required. Insurance and applicable taxes are extra. Offer ends July 31st, 2007. Other special rates apply. See dealer for complete details. **Vehicle may not be exactly as shown. Finance plans available through Volkswagen Finance on approved credit. Must have graduated within 24 months of credit application. Offer Valid on all new and used 2006, 2005 or 2004 Volkswagen Certified pre-owned models that are delivered during the program period.



www.mississaugavw.com • info@mississaugavw.com

Weekend SPOTLIGHT



**OPEN HOUSE
 SATURDAY, JULY 21
 2 - 4 P.M.
 4250 ENNISCLARE
 MILTON**

401 to Guelph Line
 North of 20 Siderd.
 East to 4th Line to
 Ennisclare

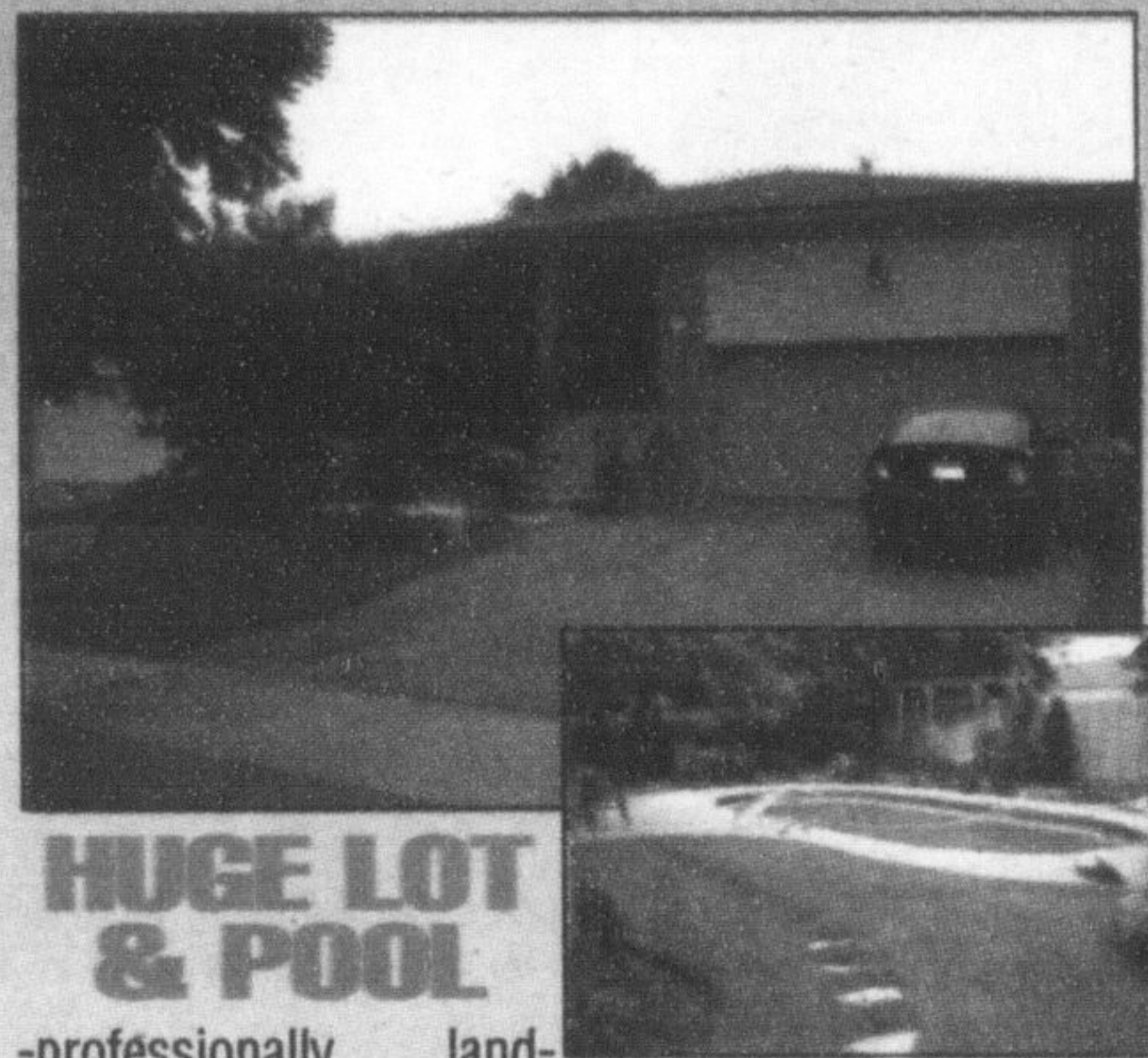
\$749,800

MODERN COUNTRY DETACHED ON 2.6 ACRES WITH MILES OF COMMUNITY TRAILS, 10 MIN. TO 401
 3620 Sq Ft, 4 BRs, 4 WRs, 3 car lge garage, modern kitchen with island & lge eat in & W/O to deck, main floor in law suite complete with kitchen, office, sep ent, living rm with fireplace, lge cedar deck with gazebo, oak staircase, hardwood, ceramics, shows 10+

**CENTURY 21 MILLENNIUM INC., BROKERAGE
 CHRIS DOSNE, Sales Rep. (905) 450-8300**



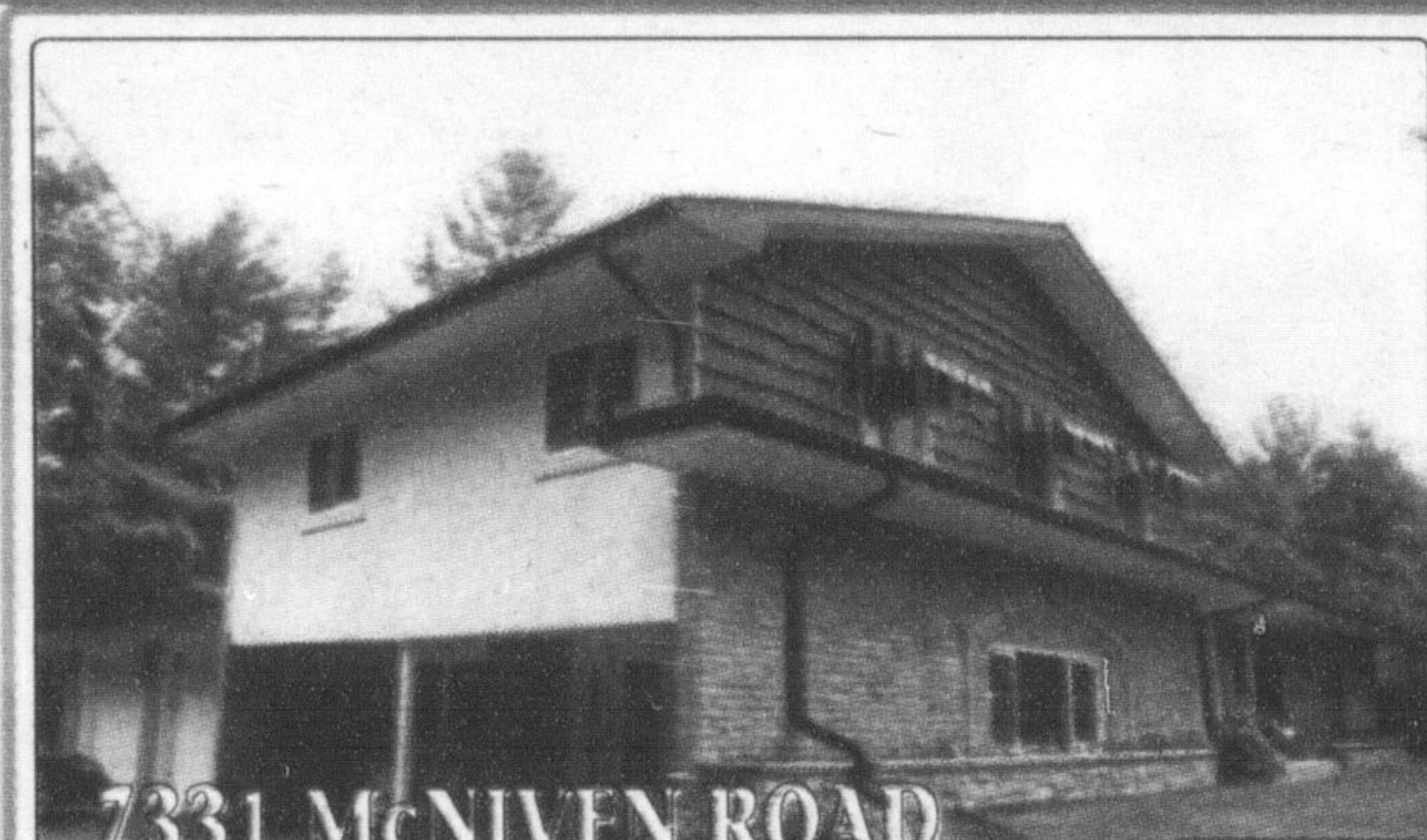
JOHN GIBB
 Sales Representative
 Office: 416-622-5305



HUGE LOT & POOL

-professionally landscaped beautifully renovated backsplit w/huge family rm, 4-bedrooms, finished rec room, oak flooring throughout with granite kitchen. This well maintained home has neutral decor & double car garage-shows better than model home @ \$469,900. Please call John Gibb (416) 622 - 5305

GIBB REALTY
 RESIDENTIAL - COMMERCIAL
 Ken Gibb Limited Real Estate and Insurance.



7331 McNIVEN ROAD

•Rolling 10 Acre Parcel •Country Home Set into a Lush Surrounding •Above Ground Pool/ Wraparound Patio •Steps from Bruce Trail/Kilbride School •Updated and Upgraded Throughout •\$649,500 Don't Wait! H262902



**ROYAL LEPAGE BURLOAK REAL ESTATE SERVICES, BROKERAGE
 Karen Paul, Sales Representative 905-634-7755**



STEPHANIE KIMMERER
 Sales Representative

Office:
905-878-7777

stephaniekimmerer@remaxcentre.ca



**OPEN HOUSE
 Sat & Sun, 2-4pm
 178 Campbell Ave,
 Campbellville**

NEW PRICE



\$347,900

COUNTRY RETREAT

This 1 1/2 storey detached home with hardwood floors, decorator colours, separate dining and living room and finished rec room has been lovingly maintained both inside and out. The gorgeous nearly 3/4 acre property has a ravine leading down to a stream/pond. Take the concrete stairs or run down the hill. Yippee! A wooden playhouse with swings is included. New drilled well (2001), new septic system (2004), six new windows (2000). High-speed Internet and Cable TV available. \$347,900.



Home Sweet Home

When you visualize a home improvement project, it doesn't have to mean tearing down walls and erecting a new structure in their wake. Often, the most subtle touches, like a new paint colour or a few well placed knick-knacks can add that certain pizzazz you're looking for. New fabrics, paint styles and innovative projects can all give your home a fresh look. And if you feel like adding a new room or re-roofing the entire house — go for it!