

# Historical society wants your photos

Don't throw out that old photo of Milton until you check with the Milton Historical Society archives.

Donations or loans of snapshots and professional photos of the changing community any time during the past 150 years are welcome. So

are diaries, letters, family histories and memorabilia.

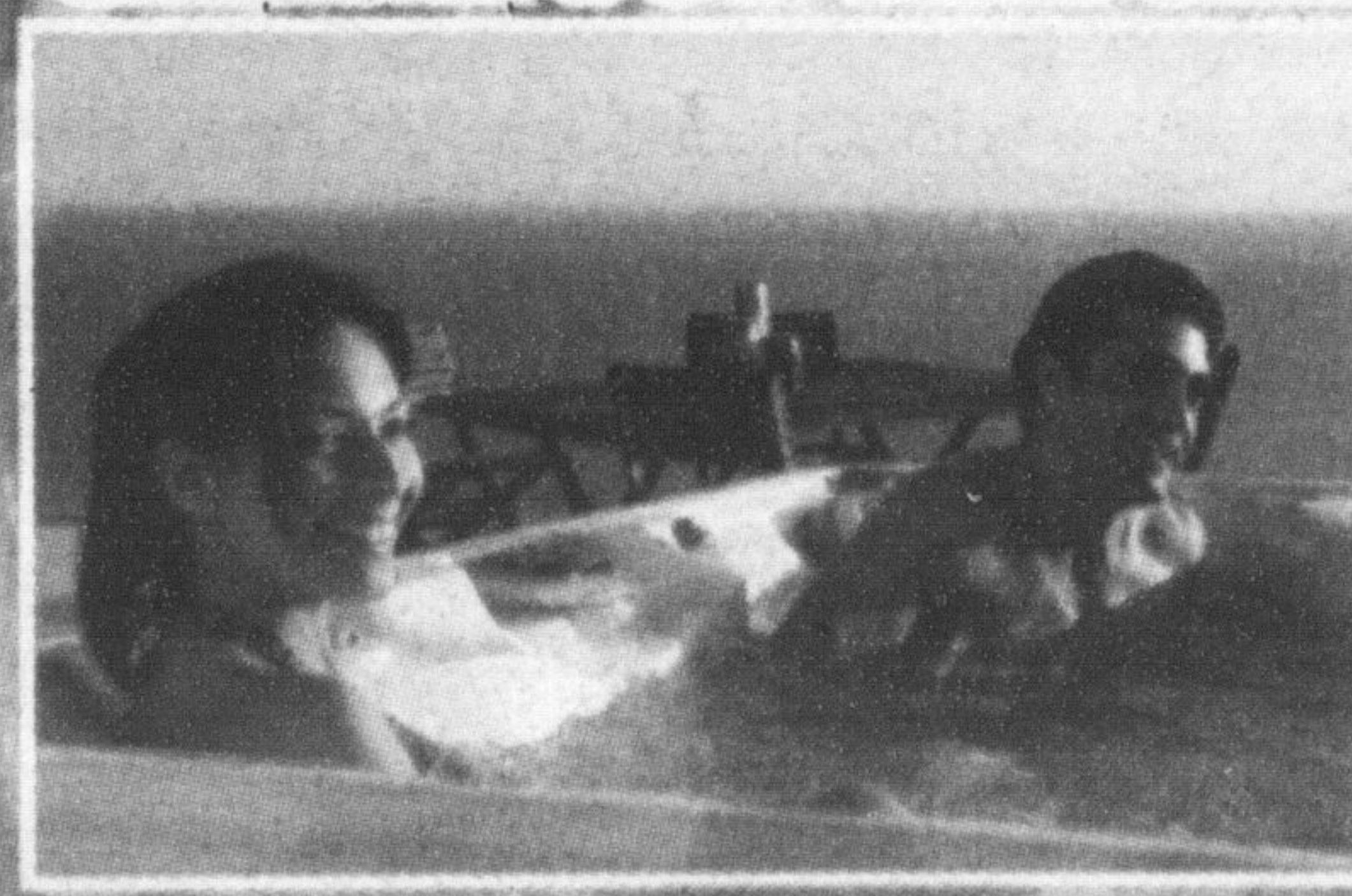
The archives are located at 16 James St., and are open Wednesday and Saturday mornings from 10 a.m. to noon. For more information, call (905) 875-4156.

## Sundance® Spas

Check Out Our FIM Umbrellas

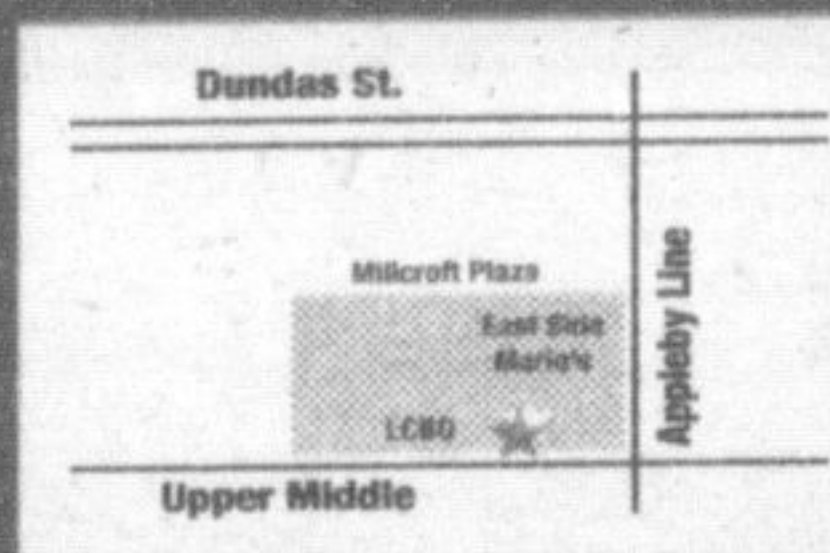
# SUPER SUMMER HOT TUB SALE

CHECK OUT THE GREAT IN-STORE DEALS!



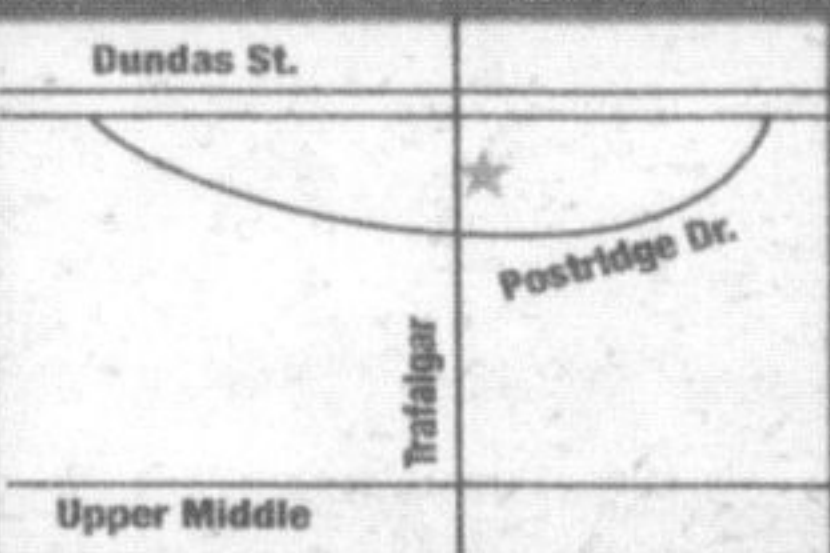
Also Save Big \$\$\$  
On Pre-Orders For  
FALL DELIVERIES

Full Financing  
from  
\$75/month  
OAC



**2000 Appleby Line**  
(Millcroft Shopping Centre)  
Burlington  
905-315-7800

**2379 Trafalgar Road**  
(Winner's Plaza) Trafalgar Ridge Plaza  
Oakville  
905-257-5006



[www.thesundancespastore.com](http://www.thesundancespastore.com)



LIESA KORTMANN / SPECIAL TO THE CHAMPION

**ANCESTOR HONOURED:** From left, Marsha Waldie, Mayor Gord Krantz, Victoria Hobbs, Ron Hobbs, Ken Lamb and Rev. Howard Sullivan stand by the grave of famous Miltonian P.L. Robertson, on which a special plaque was placed during Sunday's Ancestors Day at Evergreen Cemetery. The Hobbs are descendants of the renowned screw manufacturer, whose story was one of many told during the day, which featured costumed greeters.

## Benjamin Moore

Appleby Decor Centre

Colour & Home Decor Inspiration Destination

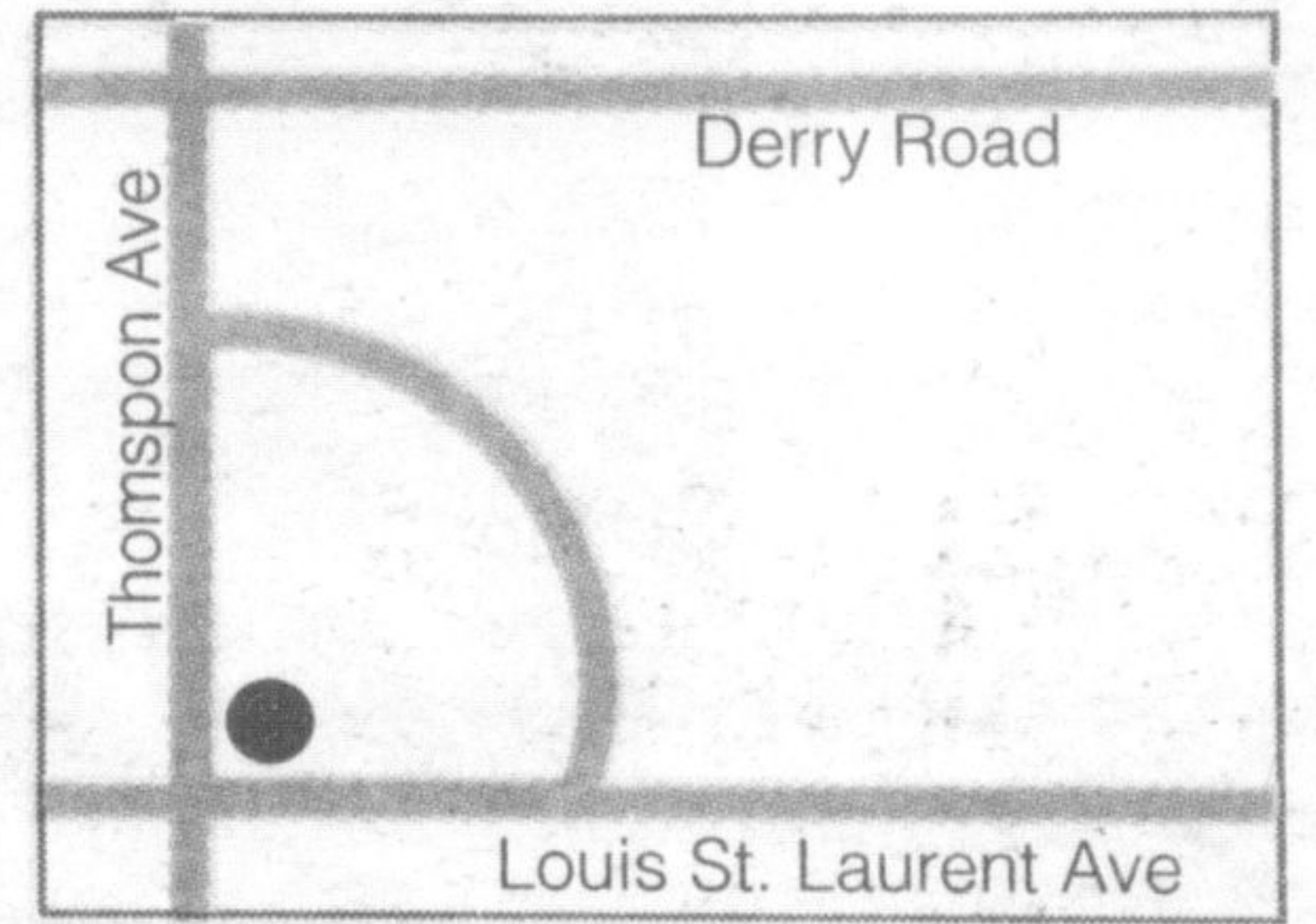
NEW LOCATION NOW OPEN!

Watch for our Grand Opening in September!



- SERVICES:**
- Flooring
  - Home Decor
  - Blinds
  - In Home Consultations
  - Colour Matching
  - Mouldings
  - Wallpaper
  - Contractor Friendly
  - Paint Purchase Database
  - Colour Testers & Big Chips
  - Knowledgeable & Courteous Service

Appleby Decor Centre  
1030 Kennedy Circle  
(A&P Plaza) Milton  
905.864.0665



Mon-Fri 8am-8pm, Sat 9am-6pm, Sun 11am-5pm