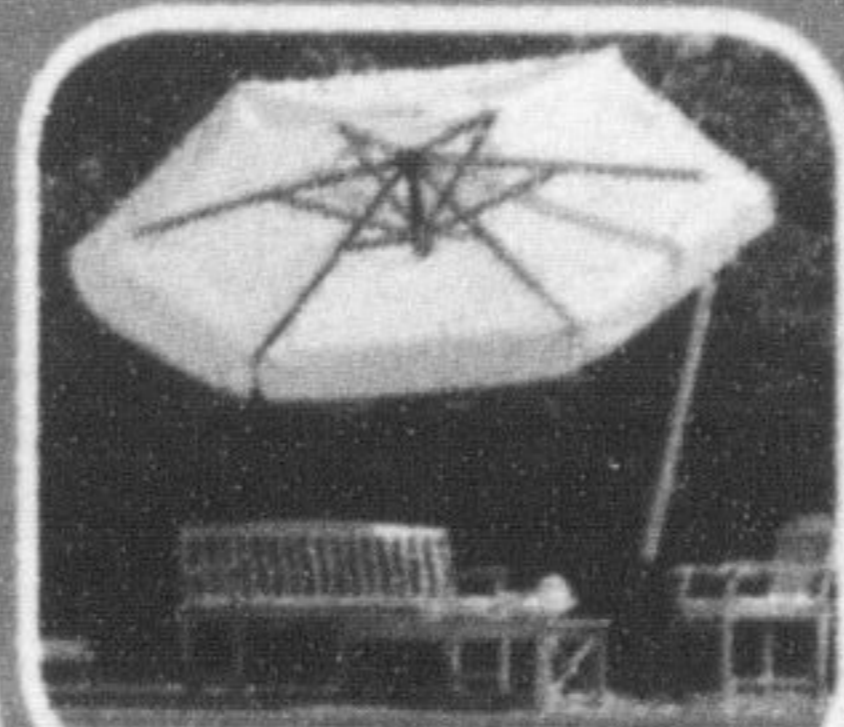


HOME, LAWN & GARDEN

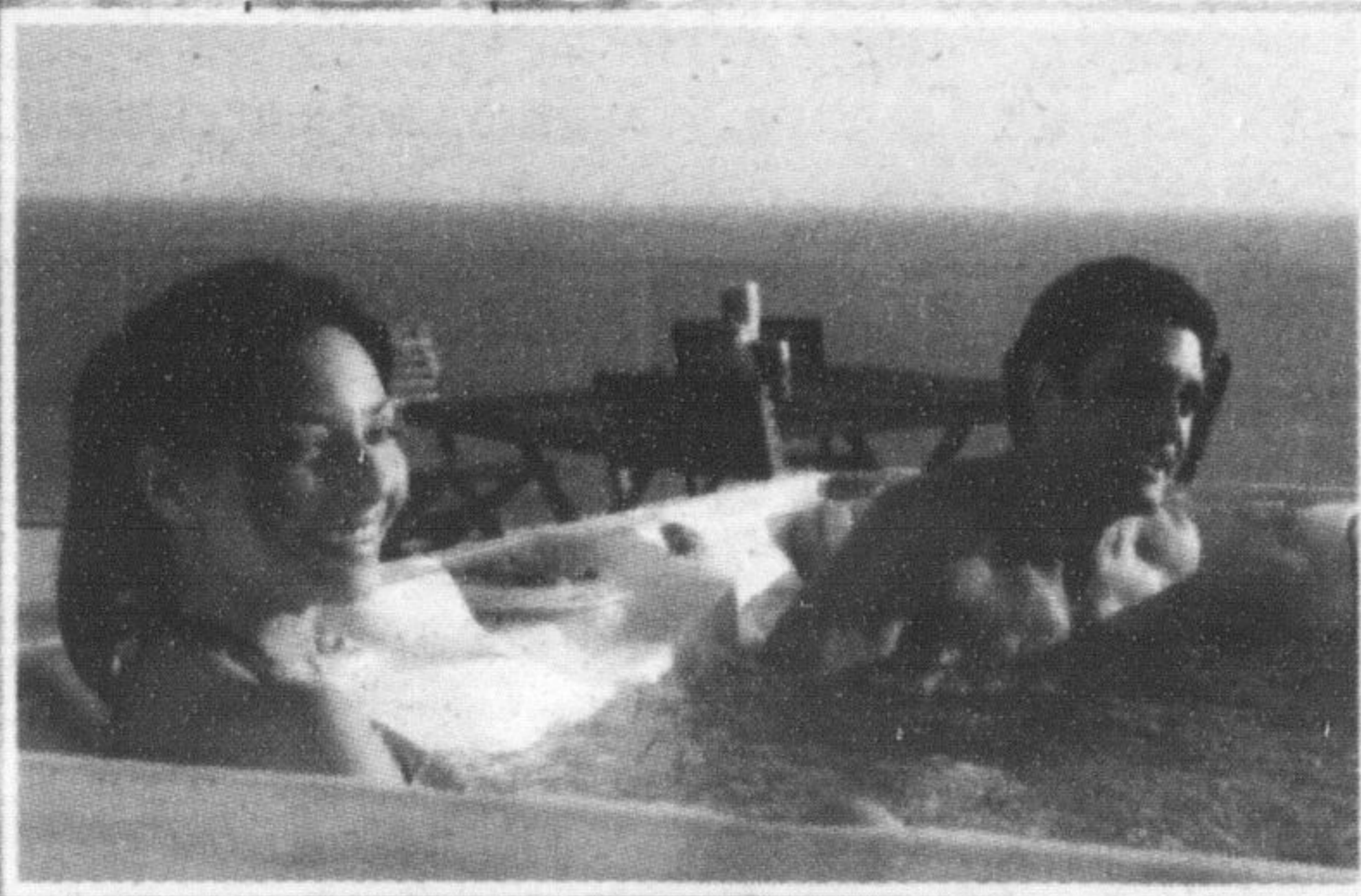
Sundance® Spas

Check Out
Our FIM
Umbrellas



SUPER SUMMER HOT TUB SALE

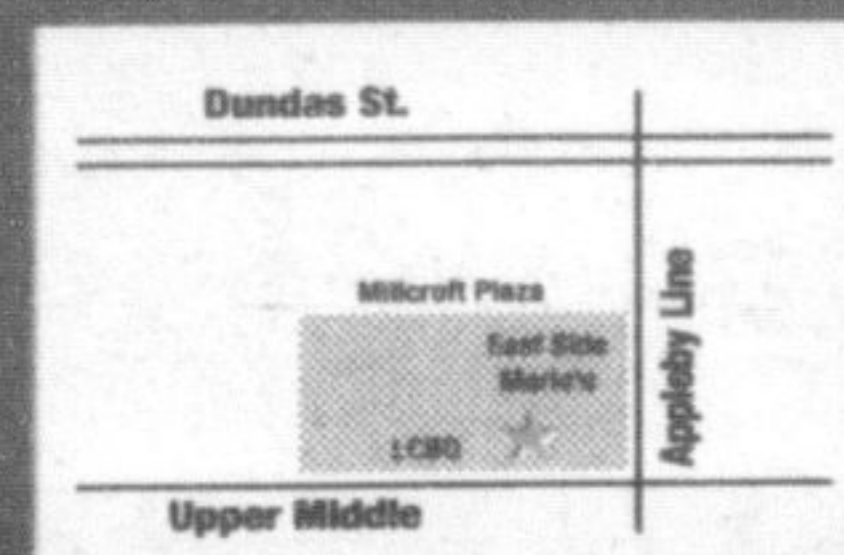
CHECK OUT THE GREAT IN-STORE DEALS!



Also Save Big \$\$\$
On Pre-Orders For
FALL DELIVERIES

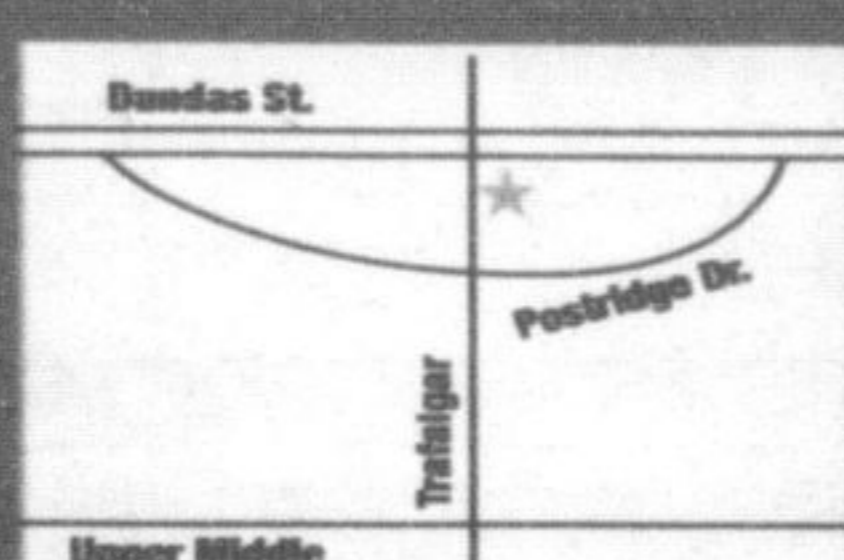
Full
Financing
from
\$75/month
OAC

The
Sundance Spa
Store
Hot Tubs and Leisure



2000 Appleby Line
(Millcroft Shopping Centre)
Burlington
905-315-7800

2379 Trafalgar Road
(Winner's Plaza) Trafalgar Ridge Plaza
Oakville
905-257-5006



www.thesundancespastore.com

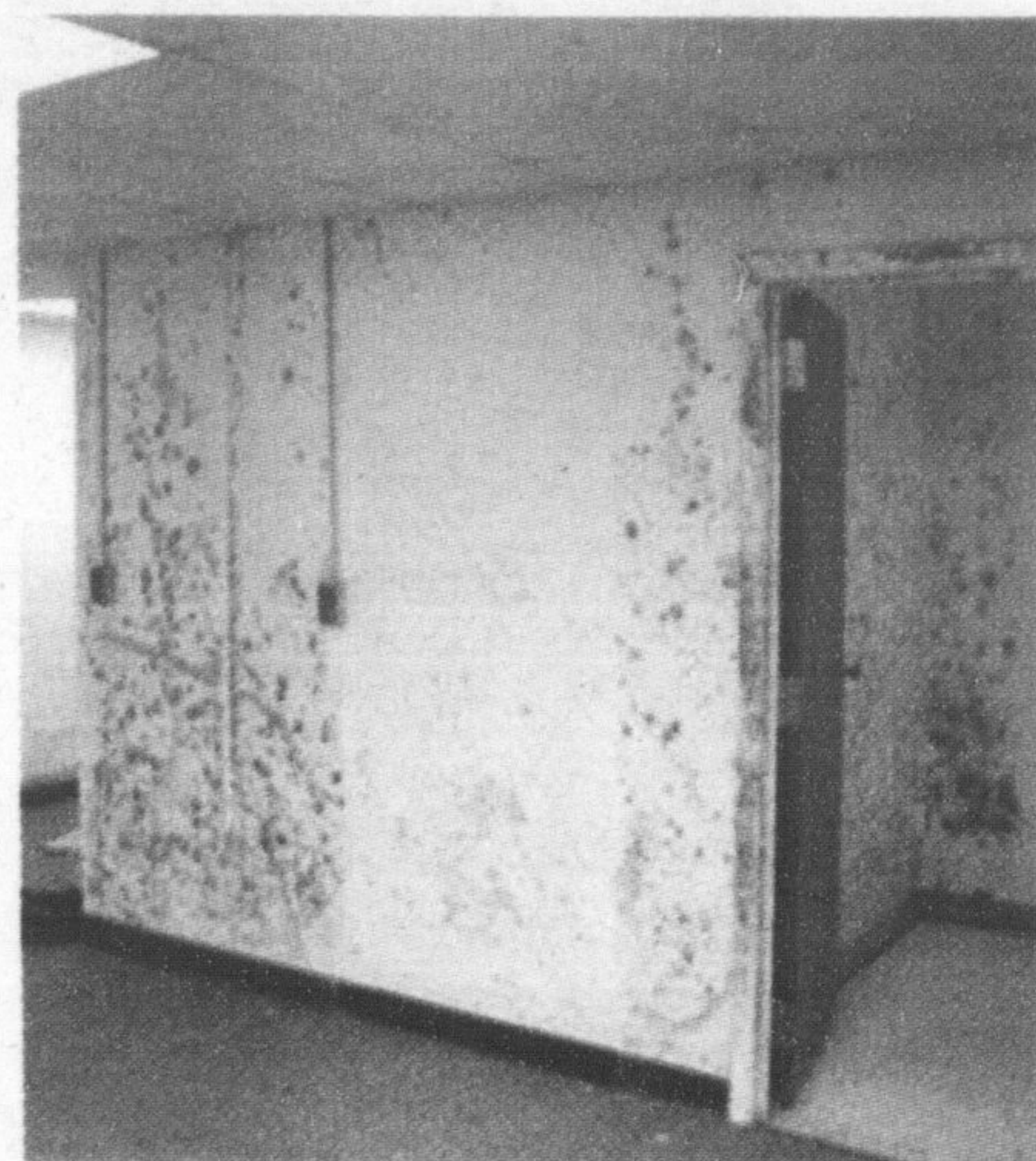
Make your home unfriendly to mould

(NC)—Mould is often caused by moisture buildup due to poor ventilation. However, there are some simple ways to help promote air circulation and reduce moisture retention in mould-prone areas, such as basements and storage areas.

While ice hockey is a great national pastime, storing damp equipment can create a mould-friendly environment. Avoid resting hockey and other athletic equipment against walls. This interferes with air circulation and can also trap moisture against surfaces. Also consider placing boxes and storage containers on pallets rather than directly on the floor to allow for air flow.

If you're going away for an extended period of time, remember that a damp basement means humid air in an environment where air changes occur very slowly. Water vapor can condense on the cooler basement surfaces and allow mould to grow.

When outdoor weather is appropriate, consider helping air flow by opening the windows slightly and securing them in place with special locks or fasteners. If you have a heat recovery ventilator (HRV), consider leaving it on medium speed continuously. Dehumidifiers only remove moisture; mould spores can remain only to cause



problems when moist conditions return.

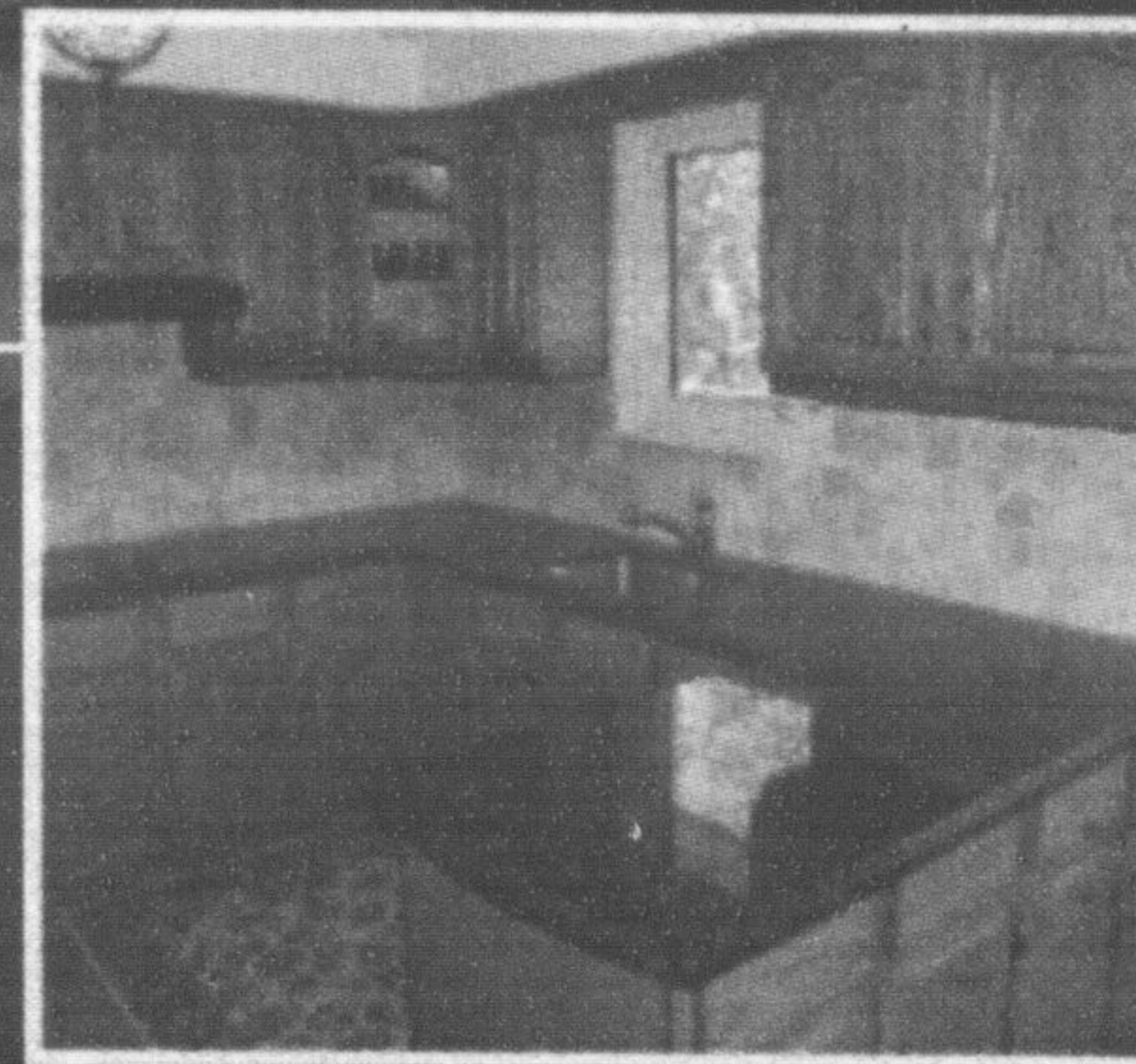
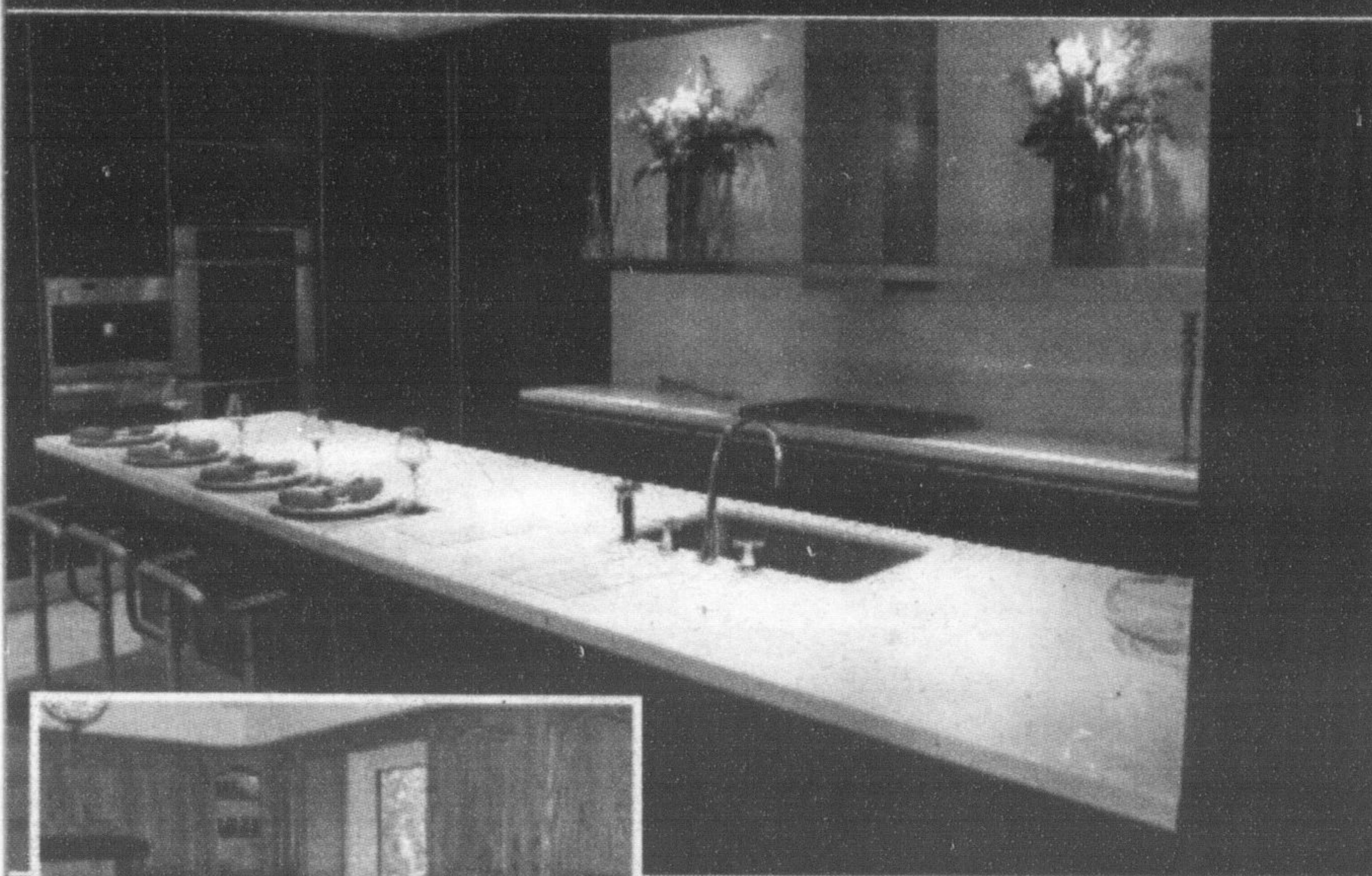
Frequent air change is the best way to keep moisture and mould spores from building up. Since prevention is always the best route in keeping a home fit, these small tips can help avoid the potential health and financial burdens associated with mould.

Remember, these tips are only general guidelines. Since each situation is different, contact a professional if you have questions about a specific issue. Morehome safety and maintenance information is available online at www.housemaster.com.

Elite GRANITE & MARBLE

"WHERE PERFECTION COSTS LESS"

- We specialize in Granite Counter Tops
- Our staff has worldwide experience in all natural stone and some man-made material (sile-stone, quartz)



#645 Main St. E., Milton
tel: (905) 864-0444
Fax: (905) 864-0445
cell: (905) 541-1792

"LET US SHOW YOU THE DIFFERENCE"