



# The Best Gift For Dad Is On Our Lot!

## DODGE TRUCKS



**2007 DODGE Ram 3500 Heavy Duty**

Equipped New! 6.7L Cummins Turbo Diesel "BlueTec", trailer tow package, 6-spd automatic, power trailer tow mirrors, diesel exhaust brakes, 6CD & GPS display Nav radio, leather trim, U-Connect Hands-Free Communication. Stk ST75.

*Now In-Stock! Ready To Tow!*



**2007 DODGE Ram 1500 ST Special Edition**

Equipped with 5.7L MDS, auto, power windows & locks, air conditioning, tilt, cruise, trailer tow package. Stk ST94.

*Now In-Stock!*



**2007 DODGE Ram Charger 1500 SLT Special Summer Edition Package**

20" alum wheels, 20" OWL tires, wheel flares, grey bodyside moulding, leather wrapped steering wheel, trailer tow pkg, fog lamps, chrome exhaust tips, plus equipped with 5.7Hemi MDS, remote start, rear sliding window, 5spd automatic, hodd protection shield, p.windows & locks, air cond'. Stk ST95

**Special Finance Rate**  
**3.9%**  
PURCHASE FINANCING for 48 months<sup>1</sup>

**4.9%**  
PURCHASE FINANCING for 60 months<sup>1</sup>

**6.9%**  
PURCHASE FINANCING for 72 months<sup>1</sup>

**Special Finance Rate**  
**0% PURCHASE FINANCING** for 60 months<sup>1</sup>

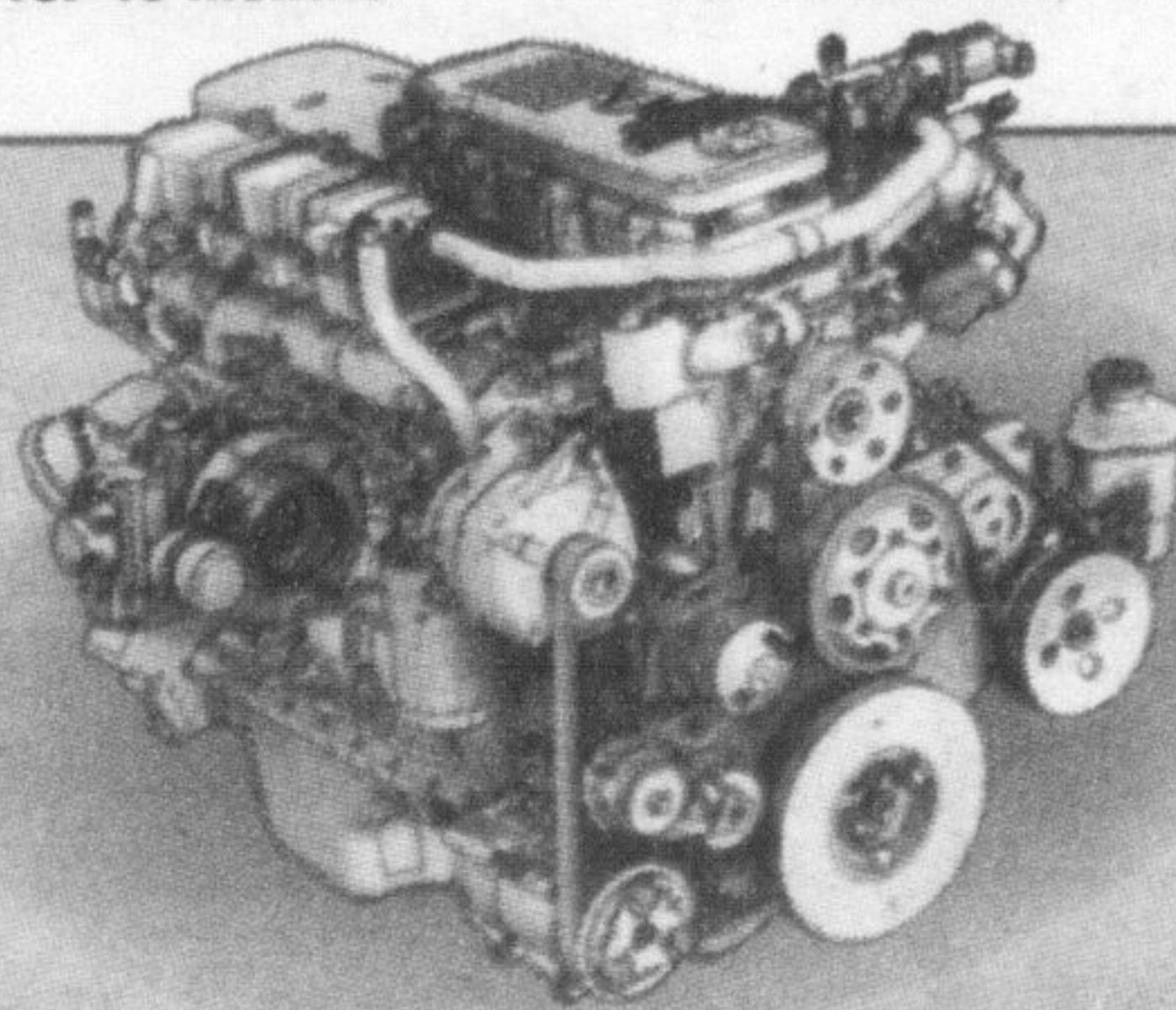
**Special Lease Rate**  
**0% PURCHASE FINANCING** for 48 months<sup>1</sup>

**Special Purchase Price**  
Retail \$42,600  
**For Dad \$39,550\***

**Special Lease Price**  
**\$425\*\*Per mths**  
PLUS 0% for 48 months

PLUS 0% for 60 months<sup>1</sup>

PLUS 0% for 48 months



### All New 6.7-Litre Cummins® Turbo Diesel 1-6 With Bluetec\*

Breakthrough ultra-clean BLUETEC technology and the use of Ultra Low Sulphur Fuel (ULSF)\*\* enables the all-new 6.7L Cummins Turbo Diesel engine to meet extremely stringent 2010 U.S. emission standards today. This leading edge technology reduces Nitrogen oxide emissions by as much as 90 percent and virtually eliminates particulate emissions - all with up to 30 percent better fuel economy vs. comparable gasoline engines.

\*Dodge Ram Heavy Duty pickup trucks only. \*\*Required fuel.

### BAD CREDIT? NEED A VEHICLE?

"Good people who need 2nd chance"

- Bankruptcies • Divorce • Bad Credit • Tax Problems • No Credit • Charge Offence • Repossessions

Call **905-876-2580**

Ask to talk to **Wes Olsen**, you never know you could be driving away.



**PRE-OWNED SPRING SPECIALS**

*All Safety & E-Tested!*

'04 DODGE CARAVAN



1 owner trade in, quad seats, polish cchrome wheels, air, PL, PW, balance of factory warranty. Stk P3451

**Sale Price! \$14,888\***

'06 SEBRING CONVERTIBLE



6cyl, clutch trim, power top, silver in colour. Only 12,500 kms. Balance of Factory Warranty. Stk P3431

**Sale Price! \$21,995\***

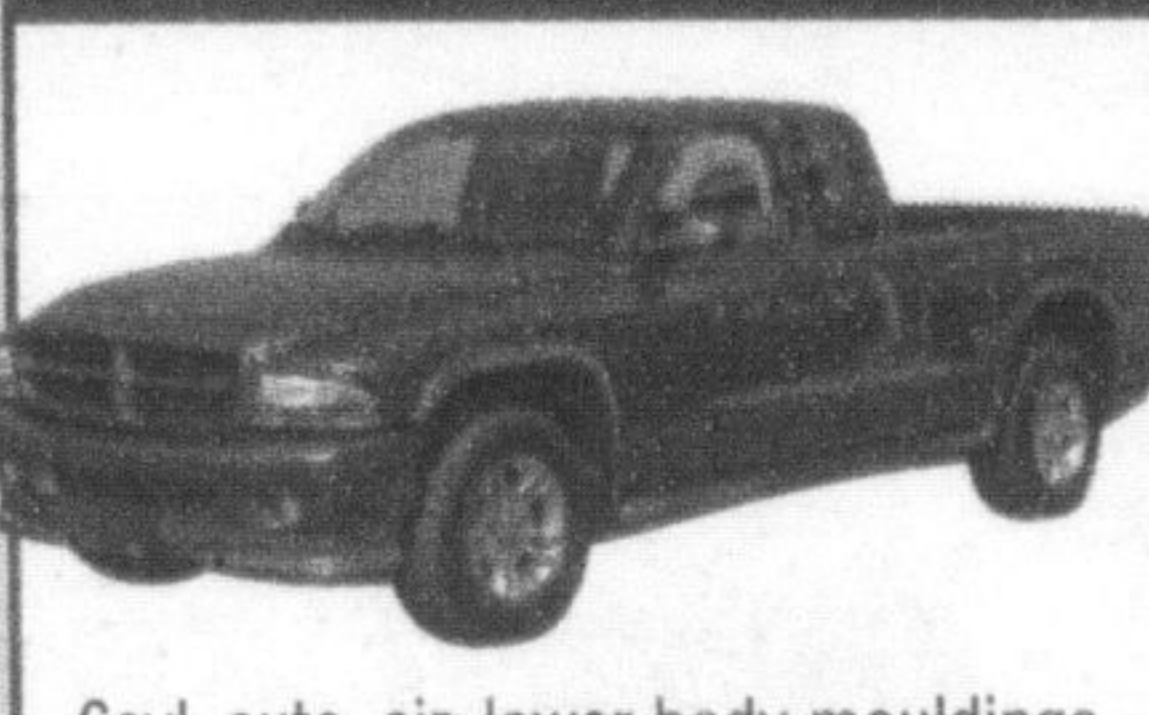
'06 CHRYSLER PACIFICA TOURING



Leather trim, heated seats, p.equipped, back-up sensor. 3.5L 6cyl, former rental. Stk P3362

**Sale Price! \$25,888\***

'03 DODGE DAKOTA CLUB CAB 2WD



6cyl, auto, air, lower body mouldings, 1 owner. Trade-in. Balance of Factory Warranty. Stk P3451

**Sale Price! \$14,888\***

# Hunt

**Chrysler Jeep**

Milton: (905) 876-2580  
Toll Free: 1-866-848-8816  
Email: sales@huntchrysler.com

**Drive that extra mile!**  
**We will make you smile!**

Your **FIVE STAR** Dealership

## 500 BRONTE ST. S., MILTON

Ask about our 12-Month Vehicle Return Policy™. It's the most intelligent way to buy a vehicle today.

Don't lock yourself in. See dealer for details.

**WALKAWAY**  
PROTECTION FOR AUTOMOTIVE FINANCING  
walkawayprotection.com

**HUNT**

SALES: Mon-Thurs 9-8, Fri. 9-6, Sat. 9-5  
SERVICE: Mon-Fri 8-5, Tues. 8-8, Sat. 8-12

SERVICE/PARTS:  
[www.huntchrysler.com](http://www.huntchrysler.com)  
[www.huntchrysler.ca](http://www.huntchrysler.ca)

Wise customer read the fine print: †All special lease and finance rate are subject to OAC. \*Sale price includes dealer allowance, destination charge (\$1350), air tax, admin fee, lic fee, GST, PST extra. ††48mth lease allowing 20,400 per year. 15c per km for average. No buy back requirements. Freight, airtax, lic fee, admin fee & GST/PST due at delivery. OAC. \*Admin fee, applicable taxes, lic fee extra. FINANCING PROVIDED BY Chrysler Financial