

GRAHAM PAINE / CANADIAN CHAMPION

WOULD YOU LIKE FRIES WITH THAT?: McDonald's drive-through customers recently saw a familiar face as Mayor Gord Krantz took a turn serving customers. The local restaurant joined more than 1,400 locations nationwide participating in the 15th annual McHappy Day, which supports a variety of charities.

Registration required for business seminar

• from DOING on page A12

ments will discuss sourcing methods, bid solicitations, evaluation and selection criteria, recourse options and how to market to the government.

Specific government purchasing initiatives such as the procurement strategy for Aboriginal businesses and PS (Professional Services) On-line will also be introduced by the Office of Small and Medium Enterprises, Public Works and Government Services Canada (PWGSC). A question and answer period will follow.

A representative from Merx, the provider of electronic tendering services to the federal government, will give a live demonstration on how businesses can access millions of dollars of sales opportunities, find competitor intelligence and recognize government spending and public buying trends.

The seminar will run from 9 a.m. to noon in the Scotch Block/Merton Room at the Halton Regional Centre, 1151 Bronte Rd., Oakville. A continental breakfast will be provided. There's no registration fee, but pre-registration is required.

To sign up for this seminar contact Halton Region's Business Development Centre at (905) 825-6000 or e-mail busdev@halton.ca. For more information visit www.halton.ca/business.

The seminar is delivered in partnership with the Ontario government's Ministry of Government Services and Ministry of Small Business and Entrepreneurship and the PWGSC.

\$0 SIGN AND \$0 DRIVE AWAY \$0

AT MILTON'S NORTH END NISSAN

2007 ALTIMA 2.5S

2.5L 175 H.P. 4 cyl., CVT Automatic, Air Conditioning, Power Windows/Locks, AM/FM/CD Stereo, Remote Entry, Push Button Intelligent Key Start, Full Size Spare & more.

\$0 DOWN PAYMENT
\$379 /48 MTH LEASE
\$0 SECURITY DEPOSIT
\$0 1ST MTH. PAYMENT

3.5%



2007 SENTRA 2.0

2.0L 140 H.P. 4 cyl., CVT Automatic, Air Conditioning, Tilt Steering, AM/FM/CD Stereo, Side Airbags, Side Curtain Airbags, Remote Entry & much more.

\$0 DOWN PAYMENT
\$279 /60 MTH LEASE
\$0 SECURITY DEPOSIT
\$0 1ST MTH. PAYMENT

3.5%



2007 VERSA 1.8S

1.8L 112 H.P. 4 cyl., 4 Speed Automatic, Air Conditioning, Power Windows, Remote Entry, Power Mirrors and much more.

\$0 DOWN PAYMENT
\$249 /60 MTH LEASE
\$0 SECURITY DEPOSIT
\$0 1ST MTH. PAYMENT

3.5%



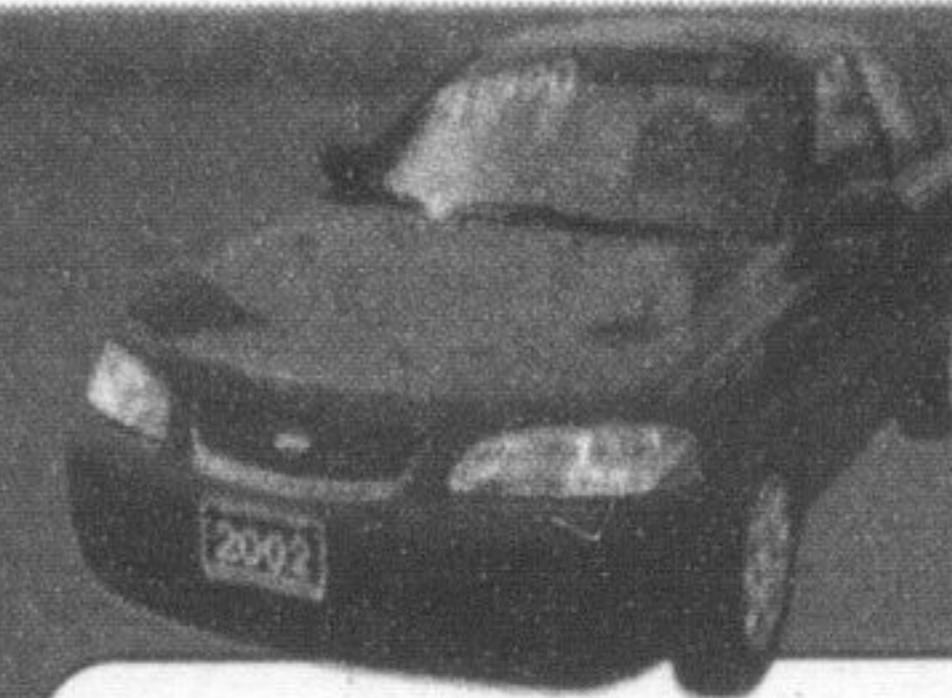
2004 Sentra 1.8 S
Auto, Air, Power Windows/Locks, Cruise, Remote Entry, etc.

\$12,490***



2003 Sentra GXE
Auto, Air, Power Group, Spoiler, 79,000 kms

\$11,990***



2002 Sentra GXE
Auto, Air, Power Group, Low Low kms 32,000

\$11,990***



2002 Sentra GXE
Auto, Air, Power Group, 90,000 kms

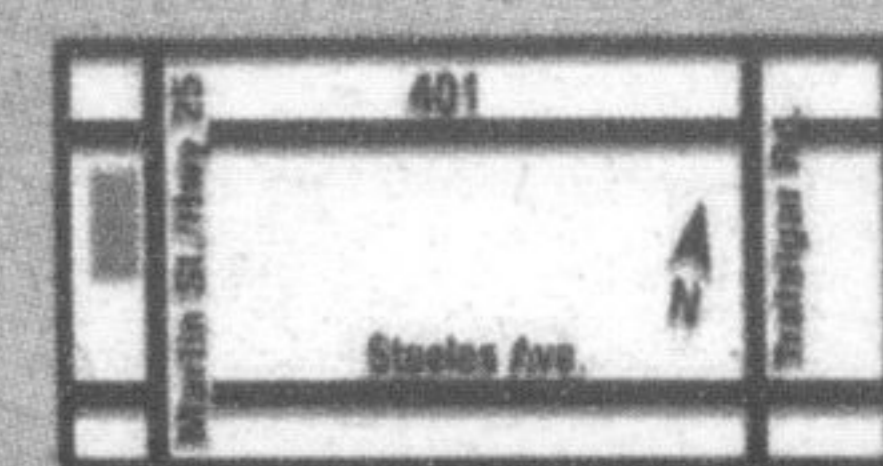
\$9,995***

Pre-owned Vehicles

Milton's
NORTH END NISSAN LTD.

610 MARTIN STREET, MILTON
905-878-4137

SALES DEPT. HOURS:
Mon.-Thurs. 9:00 - 9:00
Fri. 9:00 - 6:00
Sat. 9:00 - 5:00



www.nissan.ca



SHIFT.

Lease offers are for 2007 Altima 2.5S 14R017 AE00, Sentra 2.0 C4L077 BN00 and 2007 Versa 1.8S B4L077 BN00. Lease rates are 3.5%/3.5%/3.5%. Residual values are \$11,263.12/\$6,175.36/\$5,915.32. Lease payments are for 48/60/60 months and are plus P.S.T. & G.S.T. only. Due on signing is PPSA fee and lic. fees. Total lease obligation is \$17,813/\$16,461/\$14,691 plus P.S.T. and G.S.T. All leases are based on 24,000 kms per year excess at 10¢ per km.