



GRAHAM PAINE / CANADIAN CHAMPION

THIS IS WHAT IT WILL LOOK LIKE: Mayor Gord Krantz and Ward 1 Councillor Brian Penman unveil the scale model of the new Town Hall as other members of council, project managers and Halton Regional Chair Gary Carr look on.

Completion set for fall 2008

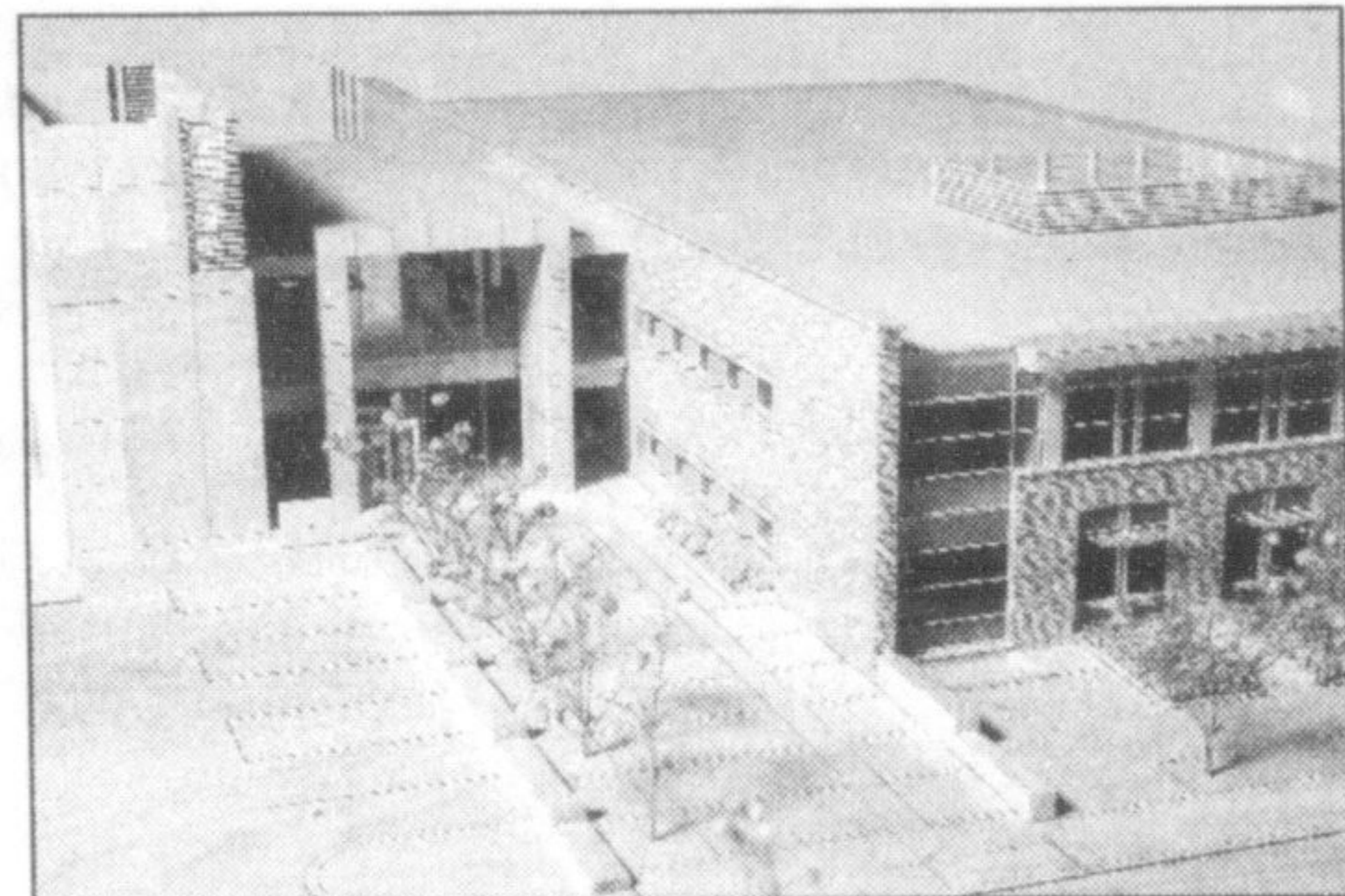
• from TOWN on page A1

The evening culminated with the unveiling of a detailed 3-D model that showcases the expansion, existing Town Hall and surrounding neighbourhood.

The wooden model, which lights up, also includes trees and landscaping all around the building.

"There's literally going to be almost a park setting there's so much landscaping," said Paul Sapounzi of The Ventin Group — the architects hired for the project. "I think it's going to be an award-winning, excellent project."

Council recently awarded a construction tender for the expansion. Within the next few weeks large plywood boards are expected to be put up around the construction site for dust and noise



The main entrance from King Street.

control. The area around Hugh Foster Hall will also be under construction to connect required site services.

By August, the underground services for the site are expected to be in place, along with the foundation. Next April is the projected date for having the new building fully

enclosed and able to hold heat. It's anticipated that the expansion will be ready for occupancy by fall 2008.

For more information or to sign up for the Town Hall expansion newsletter visit www.milton.ca.

Melanie Hennessey can be reached at mhennessey@miltoncanadianchampion.com.

Martin Street School promises lots of fun for all at Spring Fling

Martin Street Public School is inviting young and old alike to usher in the lazy, hazy days with its Spring Fling fundraiser.

Saturday, June 2 from 11 a.m. to 2 p.m., the school, located at 184 Martin St., will be transformed into a festival that'll feature plenty of food, a rock-climbing wall and the famous Martin

Street Dunk Tank.

Visitors will be able to enjoy a barbecue, a bake sale room, a raffle and a silent auction, plus plenty of indoor and outdoor games — to name just a few of the activities.

The school relies on funds raised at this annual event throughout the year.



A Wine Maker's Evening with Vineland Estates Winery

Friday, May 25, 2007

7:00pm Pre-Dinner Wine Tasting & Hors d'oeuvres
8:00pm Dinner and Wine Appreciation

MENU

Leek and Pear Soup
Sautéed Mushrooms and Apples in a Yellow Zucchini Basket,
Dijon Herb Dressing
Pork Loin Stuffed with Apricots with Sweet Potato and Parsnip Mash,
Tri-Colour Roasted Vegetables

Warm Apple Tart with Maple Ice Cream
All courses include carefully chosen wines by Vineland Estates

\$69.00 per person plus taxes and gratuities

Sunday Brunch 11am to 3pm

The quaint dining rooms of the Glenerin Inn offer the perfect atmosphere to enjoy Brunch every Sunday. Our team offers a vibrant experience, exquisite food & personal service, delivered with a flair.

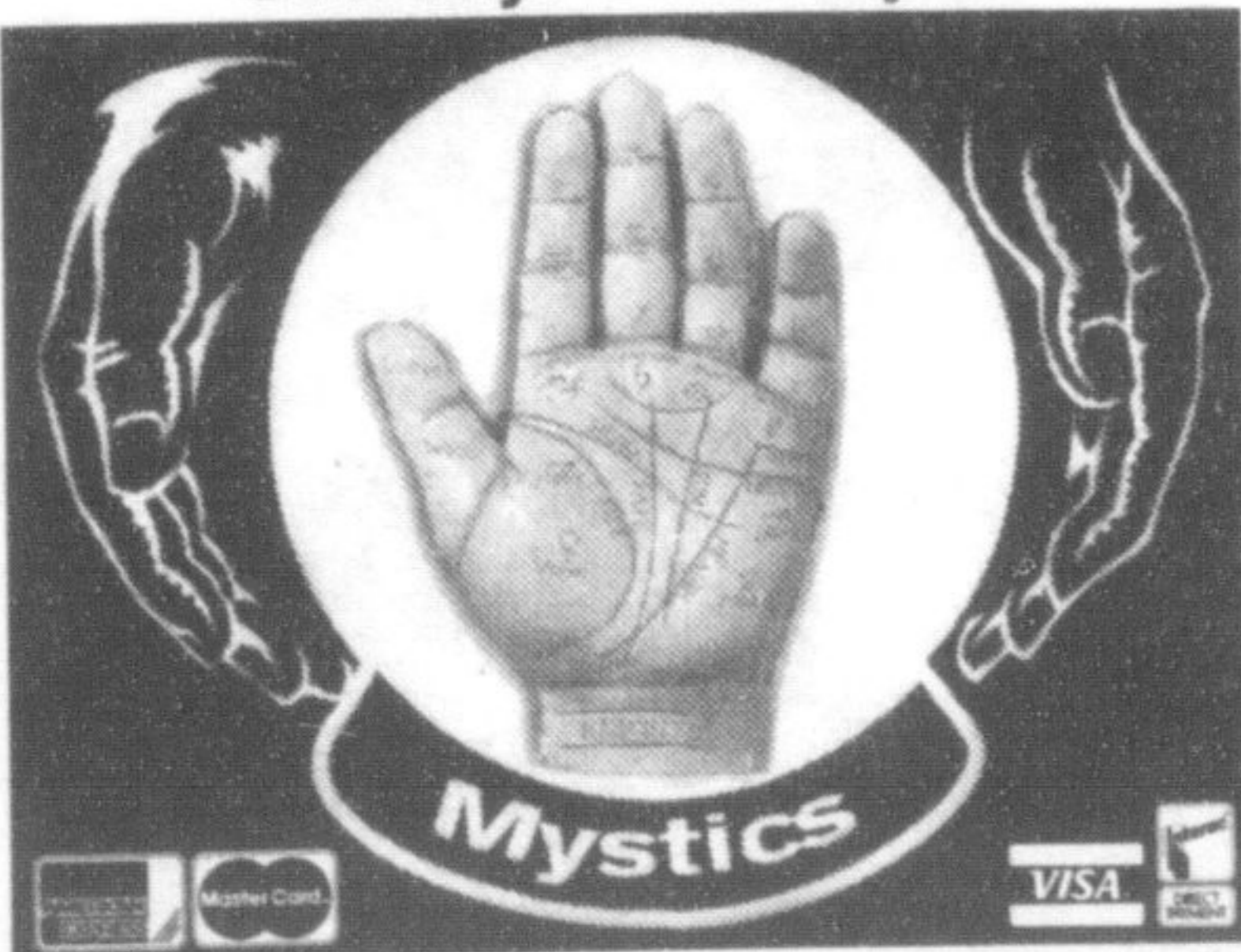
Coming in May:
The opening of our new wine cellar

The Glenerin Inn 1695 The Collegeway, Mississauga www.glenerininn.com 905-828-6103

PSYCHIC FAIR

Lectures & Demonstrations

May 25, 26, 27
Friday: 2pm-10pm
Saturday: 11am-10pm
Sunday: 11am-6pm



Psychics, Tarot Cards, Auras, Palmistry, Crystals, Fortune Tellers, Lectures & More.

Admission: \$5 - Students/Seniors \$4
2 for 1 with this ad Sat. & Sun ONLY
Friday ONLY, \$2 with this ad

Holiday Inn
3063 South Service Road, Burlington



in Today's
Canadian Champion!

Milton Crossroads
1220 Steeles Ave E.
905-878-6163

FABRICLAND

Spring Fling!

SAVE ON SELECTED
FASHION FABRICS • BASICS
SEWING NOTIONS • HOME DECOR

UP TO **66%**

OFF Our Regular Prices

Sale in effect May 14-27, 2007 on selected in-stock merchandise only. No special orders. Most items available in most stores. Look for the red sale tags.

VOGUE PATTERNS - 5.99 ea.
BURDA PATTERNS - BUY 1, GET 1 FREE!
(of equal value or less) Burda offer valid May 14-27/07. Vogue offer valid May 22-27/07, while quantities last. Not valid with any other discounts.

547 Main St. E. MILTON 878-0931