

# HOME, LAWN & GARDEN

SPECIAL SUPPLEMENT TO THE CANADIAN CHAMPION, FRIDAY, MAY 18, 2007

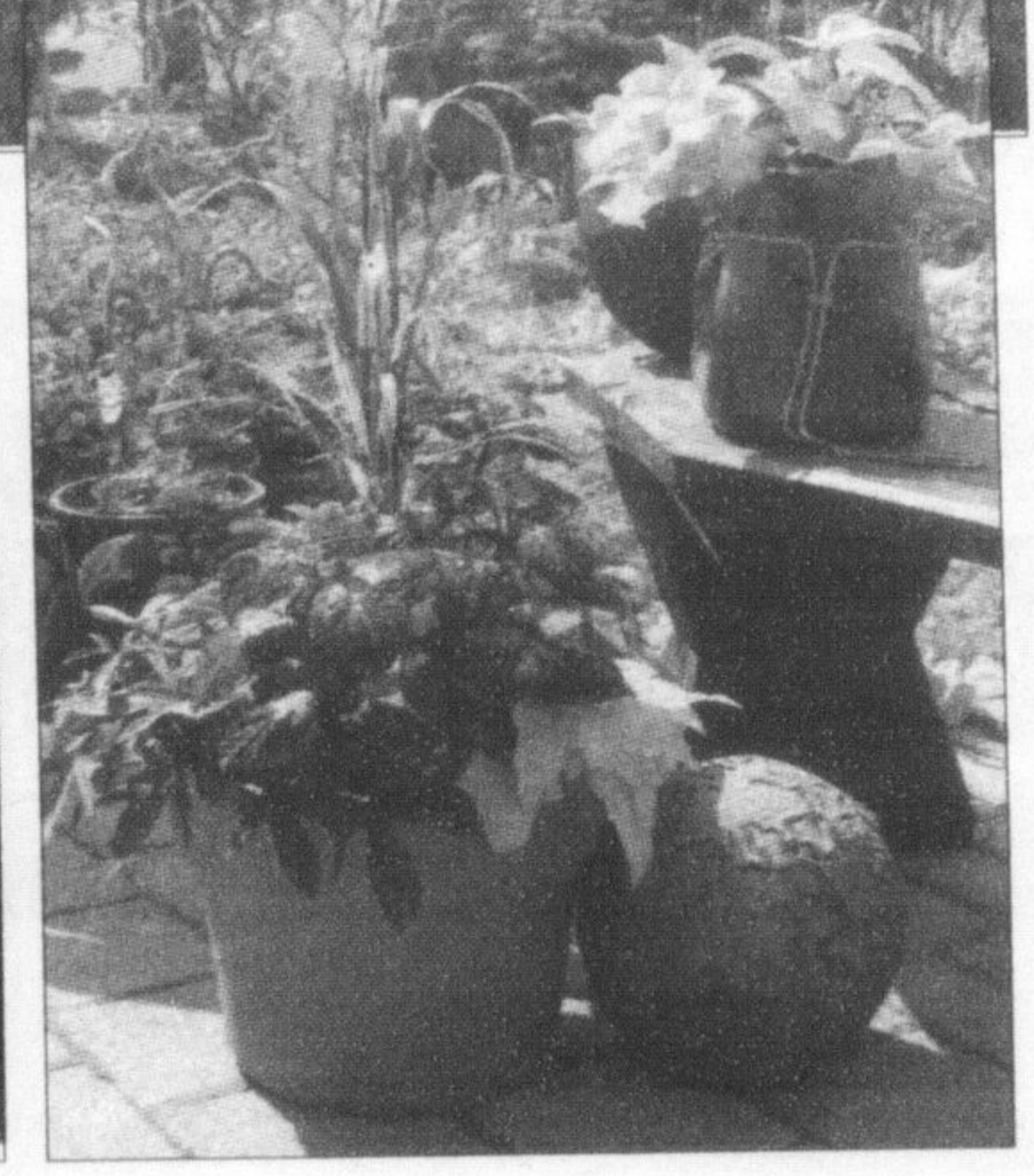
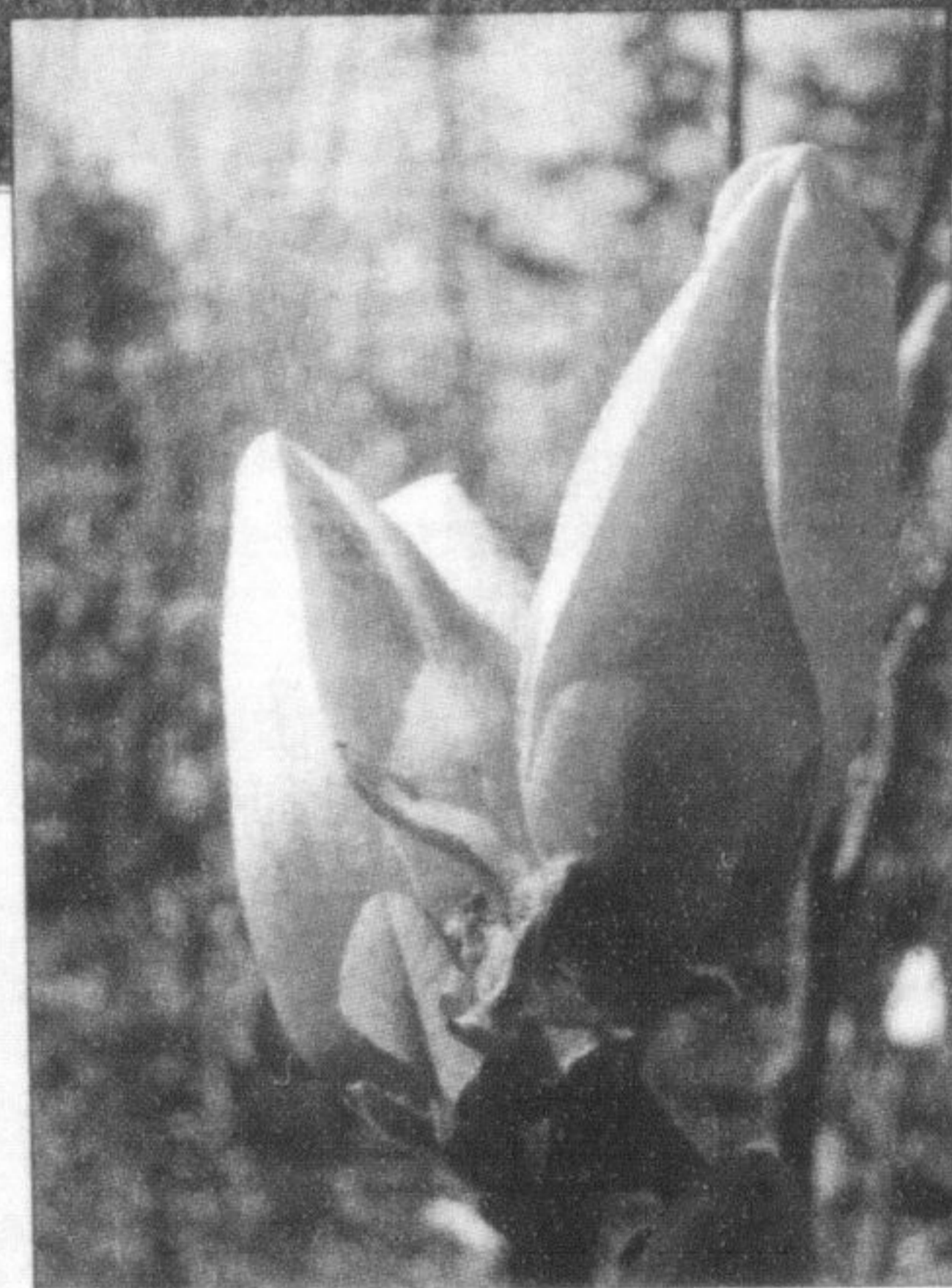
## Taylor Nursery—Your Town & Country Gardening Centre

Stepping into gardening for the first time can be daunting, but customers at Taylor Nursery can count on a knowledgeable staff that includes certified horticulturalists who can answer your questions. Employees spend their time maintaining the thousands of plants between helping customers, ensuring the products are at their fullest potential when leaving Taylor Nursery to be planted on your property. It's that approach which in 2002, won Taylor Nursery Business of the Year (with 25 employees or less) by the Milton Chamber of Commerce.



Since establishing the garden centre in 1988 (as a division of Lawton's Landscaping), Taylor Nursery has been the trusted name for Milton gardeners, providing a unique selection of shrubs, trees, perennials, annuals, hanging baskets, container gardens, and even water gardens. Taylor Nursery is very much a family affair for the Lawton family—Phil and Barbara, along with daughter Chas and son Taylor who joined the team seven years ago. Phil and Chas personally select all the plant materials stocked by the Nursery. Phil also manages the soil, mulch and aggregates side of the business, as well as Lawton's Landscaping. Barbara specializes in on-site designs for your home. Her experience and creativity will make your house look more appealing. Chas has assumed management of the retail garden centre and gift shop and has added her own creative flair to the presentation of products for sale. Taylor is specializing in turf management and garden maintenance.

The knowledgeable, friendly staff at Taylor Nursery (located at 7429 Fifth Line at the east end of Main St.) are always available to offer advice for all your gardening needs, whether you are a seasoned gardener or just starting out for the first time.



### Aggregates, Mulches & Soil

Taylor Nursery is known for its selection of aggregates (pea gravel in 3/8" or 1" sizes, crushed red brick and brick sand, clear gravel, concrete sand, crusher run and screenings) and rocks (waterfall, coral, fossil, armour, drywall, rocky and granite stone, river rock and flagstone). Taylor's mulches (pine, cedar, dyed black and red) provide an attractive cover to your garden, retaining moisture and reducing (but unfortunately not eliminating) the growth of weeds. Among the choices of soil at Taylor Nursery is its screened triple mix, which has been a three-time winner of the Milton Canadian Champion's readers' choice award for Favourite Top Soil. Soils, aggregates and mulches come bagged to take home or we'll happily deliver to your door.

### Perennials, Annuals & Baskets

Taylor's greenhouses abound with colourful perennials including new varieties and unusual specimens for the avid gardener. In addition to annual bedding plants, annuals are arrayed in hundreds of hanging baskets, container gardens, patio pots and whimsical, creative non-traditional containers that will become focal points in your yard. For sun or shade, for front entrances or back decks, there are vibrant flowers for every corner of your garden. If you're feeling overwhelmed by the selection, don't hesitate to ask for advice!

More mature yards often need to be 'refreshed' with new trees and shrubs as old ones die off or get overgrown. At Taylor Nursery, the staff can advise you on how to plan and choose the right trees and shrubs for your yard and offer suggestions about evergreen, deciduous, flowering and ornamental plants and how to plant them so they will thrive.

When you visit Taylor Nursery at 7429 Fifth Line, at the east end of Main Street—south of Steeles Avenue, north of Derry, make sure you see that "bloomin' bug," a 1999 Volkswagen Beetle coated with a truly original garden-themed airbrushing by Burlington artist Ron Gibbs.

### Shrubs & Trees

If you have moved into one of Milton's newly-built homes, you'll be eager to plant your first foundation shrubs and

Like Milton's population, the inventory at Taylor Nursery continues to grow. See the unique items and gardening accessories at the Taylor Nursery gift shop. You'll be amazed by all the gardening ideas you will find.



#### Perennials!

With the right plan, you can have perennials flowering from spring through late fall.



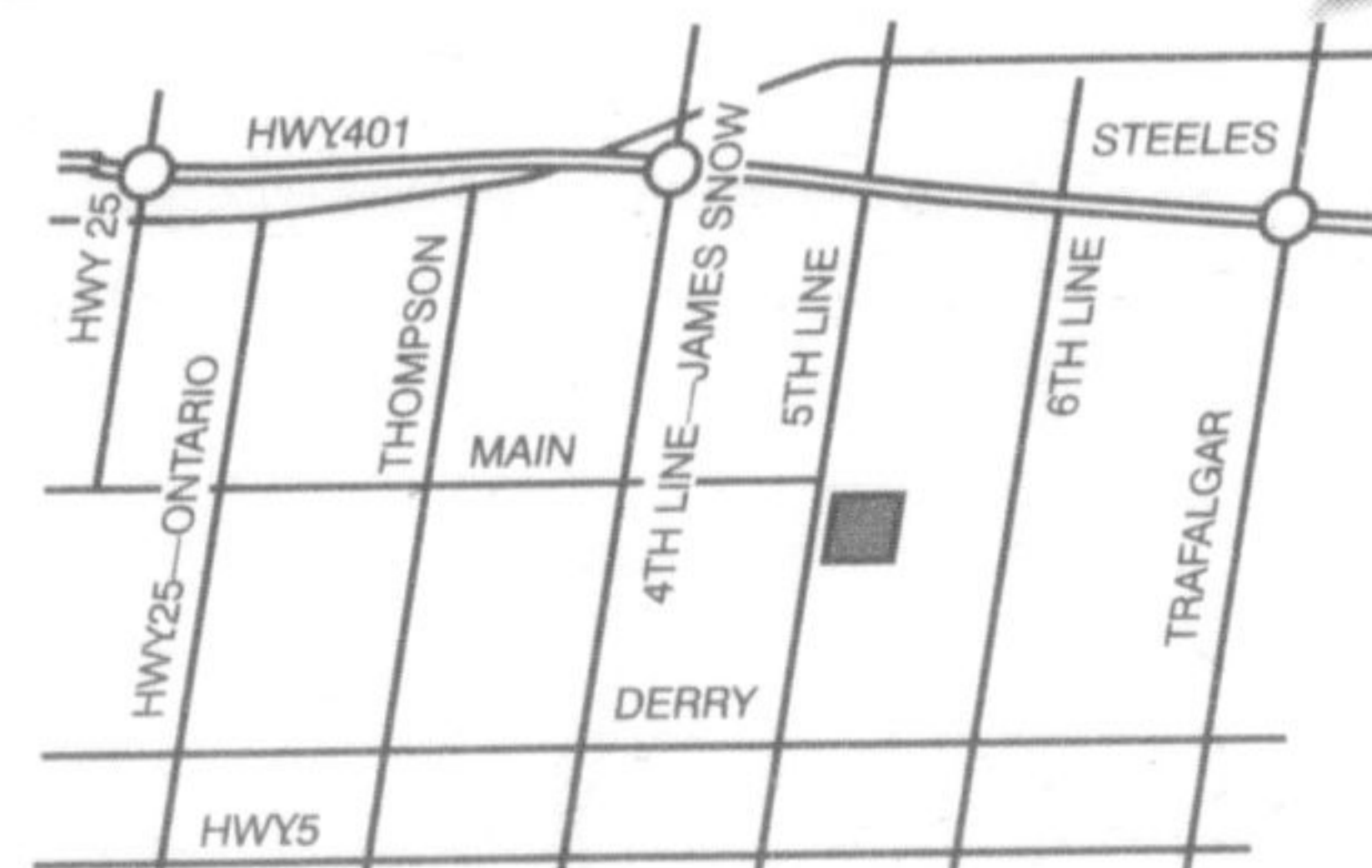
Division of Lawton's Landscaping Ltd.



# Taylor Nursery

## FLOWERS, FLOWERS & MORE FLOWERS!

Bring bright, vibrant colours to your front entrance, deck or patio... every corner of your yard... with garden plants, baskets & container gardens.



7429 Fifth Line, Milton  
Right at the east end of Main St.



#### Annuals!

For sun, for shade, for wet or dry locations, in the garden or in baskets.

Escarpment Country TOURISM PARTNER Landscape Ontario HORTICULTURAL TRADES ASSOCIATION

Hours: Mon-Fri: 7-7 • Sat: 9-7 • Sun: 10-5

For 32 years... Your Town & Country Gardening Centre \* 905.876.4100