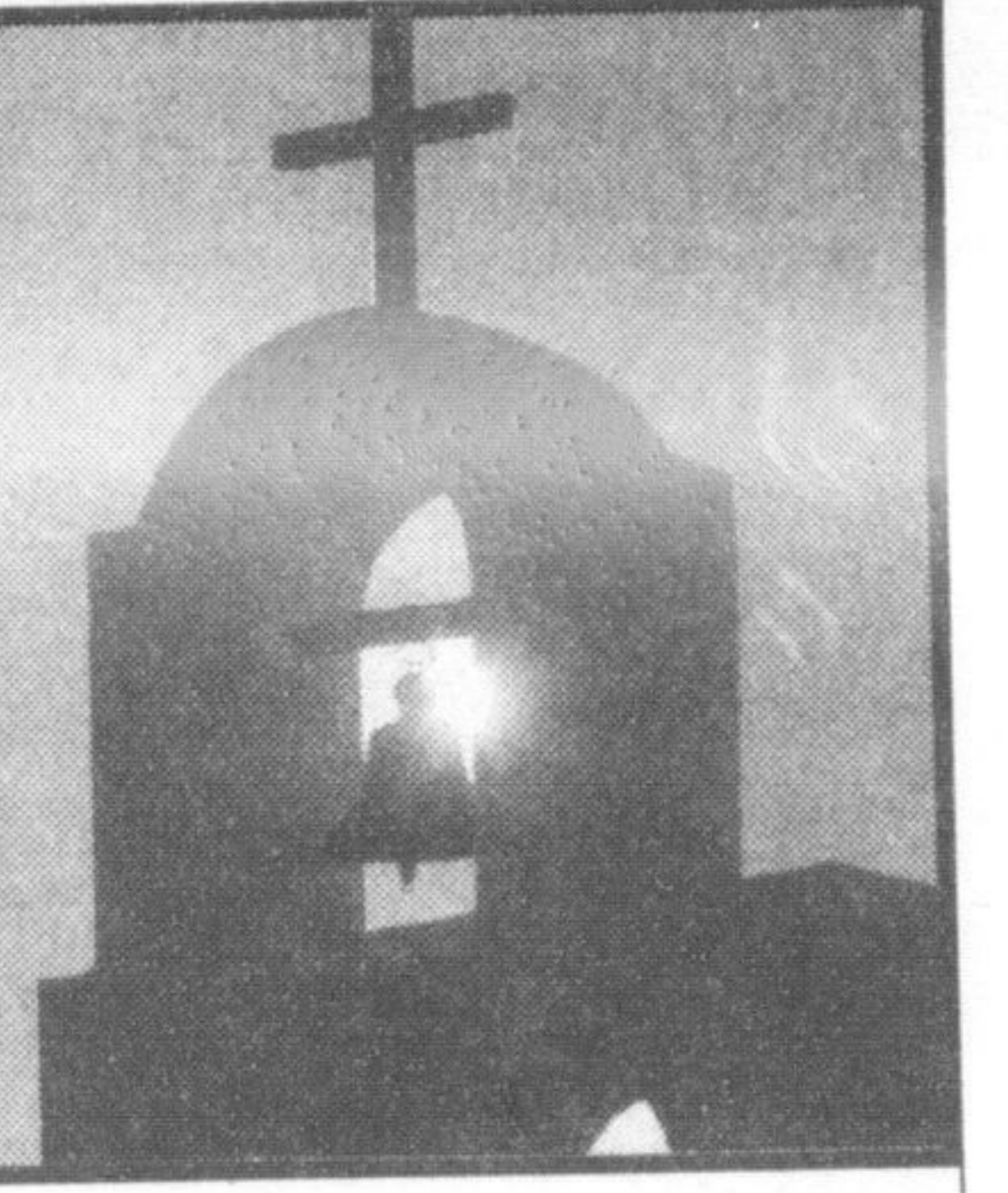


# Your Invitation To Worship



## Ever Wonder Why You Are Carrying A Heavy Load?

You lost your job. You were in a car accident. Your daughter ran away from home. A loved one just died. Your spouse has been diagnosed with cancer. Your best friend is getting a divorce... the list is endless.

Adversity affects us all. None of us can avoid life's challenges. Life is hard, but God is good! How we handle a heavy load set before us profoundly impacts those we love. Consider:

Brenda was a young woman who was invited to go rock climbing. Although she was scared to death, she went with her group to a tremendous granite cliff. In spite of her fear, she put on the gear, took hold of the rope, and started up the face of that rock.

Well, she got to a ledge where she could take a breather. As she was hanging on there, the safety rope snapped against Brenda's eye and knocked out her contact lens. Well, here she is on a rock ledge with hundreds of feet below her and hundreds of feet above her. Of course, she looked and looked and looked, hoping it had landed on the ledge, but it just wasn't there. Here she was, far from home, her sight now blurry. She was desperate and began to get upset, so she prayed to the Lord to help her to find it.

When she got to the top, a friend examined her eye and her clothing for the lens, but there was no contact lens to be found. She sat down,

dependent, with the rest of the party, waiting for the rest of them to make it up the face of the cliff.

She looked out across range after range of mountains, thinking of that Bible verse that says, "The eyes of the Lord run to and fro throughout the whole earth." She thought, "Lord, You can see all these mountains. You know every stone and leaf, and You know exactly where my contact lens is. Please help me."

Well, that would be startling enough, but you know why the climber saw it?

An ant was moving slowly across the face of the rock, carrying it.

Brenda told me that her father is a cartoonist. When she told him the incredible story of the ant, the prayers, and the contact lens, he drew a picture of an ant lugging that contact lens with the words, "Lord, I don't know why You want me to carry this thing. I can't eat it, and it's awfully heavy. But if this is what You want me to do, I'll carry it for You."

If we wonder why we are faced with a heavy load of adversity, I think it would be good to

learn to say, "God, I don't know why you want me to carry this load. I can see no good in it and it's awfully heavy. But, if you want me to carry it, I will." You can do it! God will help you - if you let Him!

To learn more about turning your stress into a success, visit a local church this week. Service times and locations are published in the Religious Directory below to help you find a great place of worship.

Submitted by Rev. Dan Rogge, Pastor of Milton's New Life Church.

### GRACEWAY BAPTIST CHURCH

103 Martin Street  
905-878-1629  
Pastor Walter H. Isaak

9:50 a.m. - Sunday School  
11:00 a.m. Morning Worship  
6:00 p.m. - Evening Service

Thursday  
7:00 p.m. Bible Study & Prayer

"You'll always find a friend at Graceway"  
www.gracewaybaptist.org



### House of David

Invites you to our Sunday Service  
'In His Presence'  
Sunday 10 Am

Holiday Inn Express  
2750 High Point Dr. Milton, ON L9T 5G5  
Prayer & Counseling: 647-999-3562  
Live A Meaningful Life.  
Make A Difference



Milton Bible Church  
Loving God. Loving people.

Sundays at 200 Main Street

10:00 am Worship & Teaching

Children's Programs Running Concurrently

11:00 am Coffee & Conversations  
(We serve Tim Horton's Coffee!)

905-876-3586

www.MiltonBibleChurch.ca

### The Sanctuary Milton

A Church for Your Heart, Mind & Spirit  
Sunday, May 20  
10:00 am

Series: "Jesus Man of Action" (a study of the book of Mark)  
"When Jesus is Involved, Miracles Happen"

www.thesanctuarymilton.com  
905.257.3987  
Milton Sports Centre  
605 Santa Maria Blvd. (Derry Rd., west of Hwy. 25)

### GRACE ANGLICAN CHURCH

Clergy: 317 Main St. E  
Rev. Dr. Mark 410 the Church on the Hill  
McDermott 905-878-2411  
Rev. Dr. Renée Desjardins  
Father Mark Curtis

#### Services: Sunday

8:00 am - Said Eucharist  
10:00 am - Sung Eucharist including  
"Kids' Spirit" Program  
followed by coffee hour

Listen to our Sunday sermons online  
at www.gracechurchmilton.com



Wheelchair Access through Parking Lot  
www.gracechurchmilton.com



### St. George's Anglican Church

Our Ministry has been serving  
this community for  
150+ Years

Join us this year in a celebration of...  
The preaching of God's word in this church  
on the escarpment since 1856.

Come and meet us, we will be very pleased to meet you.

RECTOR: Rev. Canon Charles Masters  
May 20th, 2007 Services -

8:30 am - Holy Communion  
10:30 am - Morning Prayer - Traditional Service  
10:30 am - Morning Prayer in the Family Room  
Nursery and Junior Sunday School  
5:00 pm - Evensong  
7051 Guelph Line at Derry Road (Tel) 905-878-1363  
Visit our web site www.stgeorgeslowville.org



### NEW LIFE CHURCH FOR GENERATIONS TO COME

#### SUNDAYS Service Times

First Service 9:00 AM  
(Sunday School 9:30 AM)  
Second Service 10:45 AM\*\*  
Evening Service 6:30 PM

Children's Ministries available in all Services  
\*\*Captioned for the Deaf/Hard of Hearing

#### TUESDAYS

Ladies' Coffee Break - 9:30 AM

WEDNESDAYS Family Night - 7:00 PM  
Adult Bible Study/ Extreme Life Youth/  
BG Clubs for Kids

824 Thompson Road South, Milton ON L9T 2X5  
Visit Us Online www.NewLifeMilton.com  
Or Call Pastor Dan Rogge at 905-3358



### MILTON SEVENTH-DAY ADVENTIST CHURCH

Invites you to our weekly Sabbath services at  
Hugh Foster Hall, 43 Brown St. Milton  
Sat. 9:30 a.m. - Sabbath School  
Sat. 11:00 a.m. - Divine Service

#### FREE BIBLE SCHOOL

Discover the amazing Bible answers to life's perplexing questions,  
and the secret to a happy life.

For FREE BIBLE LESSONS, write: P.O. Box 23012,  
55 Ontario St., Milton, Ont., L9T 5B4.

On the INTERNET, http://www.vop.com and  
www.amazingfacts.org/bibleschool/schoolmain.asp

PASTOR: AJ DaCosta 519-835-8301

For more information about our service and program, please call.

### CHURCH OF CHRIST

1412 Britannia Rd. West, Milton, On L9T 2X8  
905-875-2939

Sunday School Classes  
10:00 am

Worship & Communion  
11:00 am

Thursday Bible Study  
7:00 pm

Minister Steve Corbett

### MILTON GOSPEL HALL

306 Ontario St. N. • 878-3873

10:00 a.m. - The Lord's Supper

11:45 a.m. - Sunday School

6:30 p.m. - Gospel Service

Wednesday 7:30p.m. - Prayer and Bible Study

So then every one of us  
shall give account of himself  
to God.

Romans 14.12

### KNOX PRESBYTERIAN CHURCH WELCOMES YOU

170 Main St. E., Milton 905-878-6066  
Minister - Rev. Howard T. Sullivan  
Director of Music Ministries - Sonja van de Hoef

Sunday Worship 10:30 a.m.

9:15 a.m. - Youth Small Group (Grades 7 & up)

10:30 a.m. - Children's Worship  
(Ages 3 - Grade 6) & Nursery

"CALLED TO SERVE THE LORD"



Wheelchair access and washrooms provided so that  
all may come and worship. Access off Mary Street.



905-878-5664

Located on Derry Rd.,  
between the Sports Centre  
and the Hospital

Pursuing Jesus passionately and  
connecting with our God-given family  
Meet new friends in the café at 10:00 am  
10:30 a.m. Service  
Where is Your Treasure?

Victoria Day Celebration! -Sun, May 20  
Ice Cream & Fireworks at 8:30 pm

Lead Pastor Jack Ninaber/ Youth Pastor Eric Helliwell

www.southsidemilton.org

A Church of the Christian and Missionary Alliance  
Located on Derry Road, between the Sports Centre & the Hospital

### NEW THIS YEAR...

## HIGH POWER HOCKEY CAMP 2007

Monday July 9th - Friday July 13th

9 am - Noon

Early Bird Price \$59 Regular Price \$69  
For boys and girls entering Grade 5 to Grade 8

Southside Community Church  
2850 Derry Rd. East, Milton  
Phone 905-878-5664 to register

We welcome you to...

### ST. PAUL'S UNITED CHURCH

123 Main St. E., Milton

Sunday May 20, 10:30 am

Guest Speaker: Carol Hyde

Supervised Nursery Care from 10:15 a.m.  
No Church School & Gospel Unit Today  
Coffee & Conversation after the service  
Come Worship With Us!



Rev. John Benham & Rev. Gaylyn McLean  
Church office: (905) 878-8895 ext. 21  
www.stpaulsmilton.org