

# cover *story*

## Valery Homes introduces intimate boutique-styled condominiums in Milton's finest location

There's nothing better than living in style. Now imagine living in style and enjoying tranquility and fresh air, where you are mere moments from all the amenities that make life a little easier and a lot more exciting. That is exactly what Valery Homes is offering at their new Parkside Residences in Milton.

Discover this wonderful location, with intimate restaurants, great shopping, quaint streets, breathtaking escarpment views and charming neighbourhoods.

At Parkside Residences, Valery Homes is now offering the opportunity for condominium buyers to enjoy a lifestyle in Milton that was never dreamed possible. "Milton has been waiting for a product like Parkside Residence for a very long time. I am pleased that Valery Homes can provide this amazing new lifestyle here in Milton", says Ted Valeri, President of Valery Homes.

The best part of your day will be the thought of coming home to the welcome of Parkside's elegant lobby which has been designed with soft seating and two sets of elevators for your total convenience. You immediately have a sense of the quality and craftsmanship that you can enjoy in your individual suite at Parkside Residences.

A sleek, European-inspired ceramic floor ushers you into your private world, exclusively reserved only for a limited number of residents. Each suite is designed with beauty and function, inviting the homeowners to apply their individual taste. Suites range from 610 to 1,057 sq. ft. and feature unique designs complemented with bay windows and spacious balconies. Enjoy the luxury of 9' ceilings throughout your suite. Kitchens feature gorgeous granite countertops, along with custom oak cabinets and 36" high upper cabinets. European ceramic flooring adorns the bath and foyer. Parkside offers the convenience of ensuite laundry facilities.

For total comfort, Parkside Residences features a state-of-the-art heating system along with central air conditioning. This new technology offers maximum climate control in both summer and winter, including efficiencies that will translate into significant energy savings.

Valery Homes have been building communities of exceptional quality since 1958.

They are proud to have developed and built landmark residential communities in some of Ontario's finest locations including Oakville, Burlington and Milton. Now they have returned to Milton with Parkside Residences, an innovative new condominium residence.

"It's great to be back in Milton with this exciting new condominium. Our experience here was incredibly rewarding. It is a wonderful community in which to reside".

Valery Homes has developed a wide range of residences with a specialty in designing and building award winning condominiums. Valery understands the unique lifestyle condominium living offers. Their handpicked team of architects and designers ensures your condominium features all the luxuries and conveniences that enhance your lifestyle.

Parkside Residences is an intimate enclave of six storey, boutique-styled condominiums, set in one of the area's finest locations. The Fairmont is the first building to be released and will set the standard for the buildings to follow.

Designed to complement the unique escarpment setting, the exterior facade incorporates a blend of earth-toned natural stone along with the subtlety of clay brick. Modern touches and applications of dramatic and decorative stucco, add definition to the overall architecture. The result is a meticulously detailed and refined residential offering.

As a Parkside resident you can enjoy magnificent Niagara Escarpment views. Close to all the urban amenities, this idyllic location is a perfect blend of town and country.

Shop for the latest merchandise in the neighbouring national brand stores and services or stroll down the historic streets of downtown Milton. Discover 19th century architecture that has been lovingly restored to house an eclectic collection of quaint shops and restaurants. Enjoy a 15-minute drive to Campbellville for a day of antiques, or hike through the trails of the escarpment for a glimpse of nature at its most pristine. Some of Ontario's most prestigious golf clubs, including Club Link's Glencairn Golf Course and the magnificent Greystone are just moments away. The "real" world is waiting, as you access highways 401 and 407 in mere moments to whisk you to your destination. Mississauga is 15 minutes to the east and Pearson International Airport only a few minutes more.

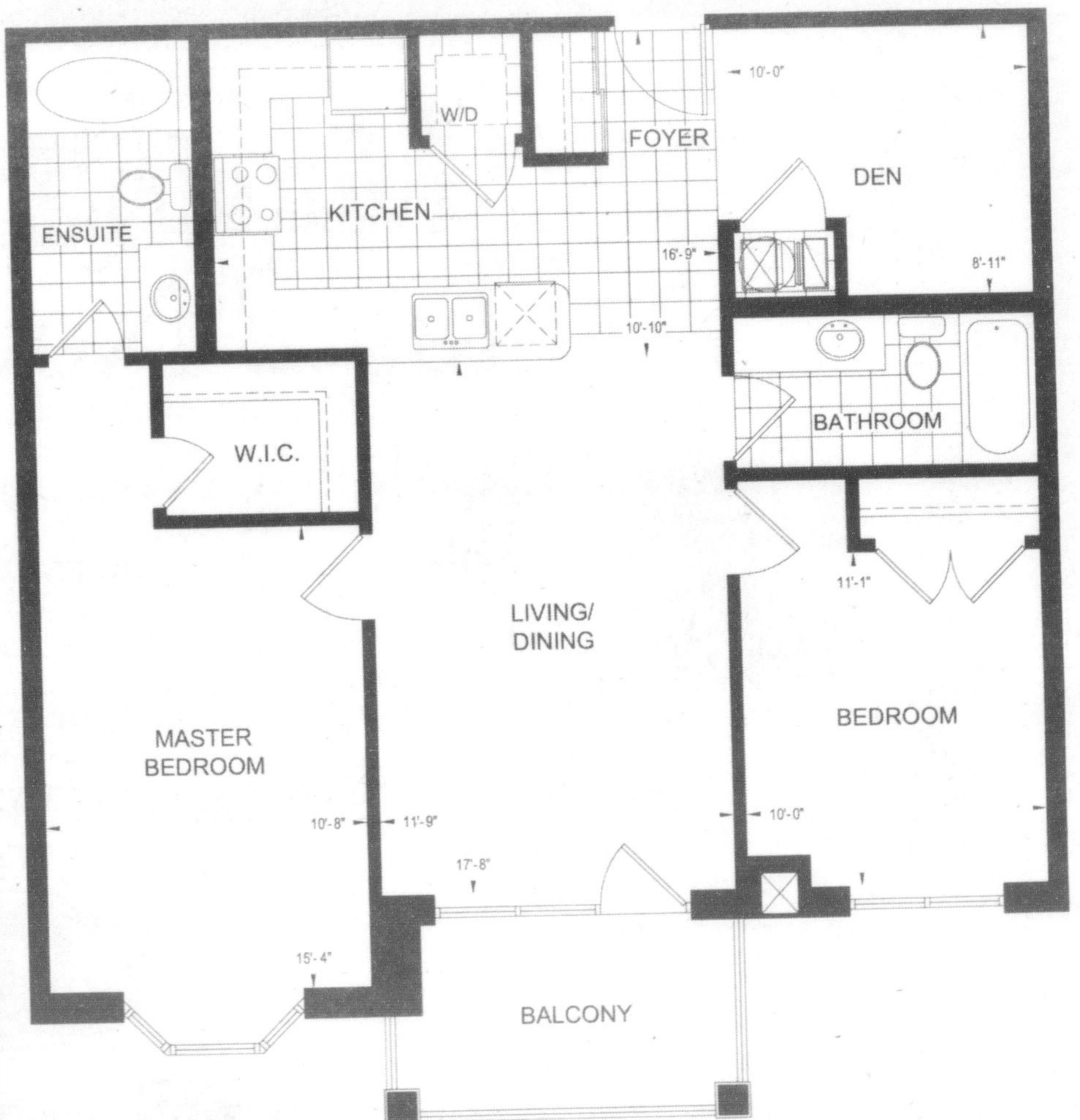
"Our investment in Milton is a major long-term commitment. Valery Homes will be part of the Milton landscape for many years to come."

Prices begin as low as \$181,999. Visit our fabulous Sales Office, just west of Fourth Line on Derry Road, in Milton or check out [www.valeryhomes.com](http://www.valeryhomes.com).

Call 905-864-0509 or 1-888-757-7737 today and ask for Wayne Picyk.



Valery understands the unique lifestyle condominium living offers. Their handpicked team of architects and designers ensures your condominium features all the luxuries and conveniences that enhance your lifestyle.



Suites range from 610 to 1,057 sq. ft. and feature unique designs complemented with bay windows and spacious balconies.



Some of Ontario's most prestigious golf clubs, including Club Link's Glencairn Golf Course and the magnificent Greystone are just moments away.