

**PLAN EX-**  
 I CERTIFY THAT THIS PLAN IS REGISTERED IN THE LAND REGISTRY OFFICE FOR THE LAND TITLES DIVISION OF HALTON (NO. 20) AT \_\_\_\_\_ O'CLOCK ON THE \_\_\_\_\_ DAY OF \_\_\_\_\_ 2007.  
 I HAVE BEEN REGISTERED FOR PROPERTY BOUNDARIES 24936-4146 (LT) AND 24936-0081 (LT).

**PRELIMINARY**  
 LAND REGISTRY

PART	LOT	CONVEYANCE AREA (HA)	OWNER	PIN
1	1	0.0000		24936-0081 (LT)
2	2	0.0000		24936-0081 (LT)
3	3	0.0000		24936-4146 (LT)
4	4	0.0000		24936-4146 (LT)
5	5	0.0000		24936-4146 (LT)
6	6	0.0000		24936-4146 (LT)
7	7	0.0000		24936-4146 (LT)
8	8	0.0000		24936-4146 (LT)
9	9	0.0000		24936-4146 (LT)
10	10	0.0000		24936-4146 (LT)
11	11	0.0000		24936-4146 (LT)
12	12	0.0000		24936-4146 (LT)

PARTS 1, 2, 3, 4, 5, 6, 7, 8, 9, 10, 11, 12 COMPOSE PART OF PIN 24936-0081 (LT)  
 PARTS 1, 2, 3, 4, 5, 6, 7, 8, 9, 10, 11, 12 COMPOSE PART OF PIN 24936-4146 (LT)

THE EXPROPRIATIONS ACT  
 EXPROPRIATION PLAN SHOWING  
 PART OF LOT 10  
 CONVESSION 4 NEW SURVEY  
 AND  
 PART OF LOT 10  
 CONVESSION 5 NEW SURVEY  
 GEORGIC TOWNSHIP OF TRAFALGAR  
 TOWN OF MILTON  
 COUNTY OF HALTON  
 SCALE 1:1000

CUNNINGHAM MCCONNELL LIMITED  
 ONTARIO LAND SURVEYORS

- LEGEND**
- 1 SURVEY MONUMENT FOUND
  - 2 SURVEY MONUMENT SET
  - 3 SHORT STANDARD IRON BAR
  - 4 IRON PIPE
  - 5 CONCRETE MONUMENT
  - 6 CUNNINGHAM MCCONNELL LIMITED
  - 7 PROPERTY IDENTIFIER NUMBER
  - 8 CONCRETE MONUMENT
  - 9 BAND & MCKEONSTONE O.L.S.
  - 10 BAND & MCKEONSTONE O.L.S.
  - 11 PLAN 200-10500
  - 12 PLAN BY SCHELL & SCHELL O.L.S. DATED FEB. 15, 1961
  - 13 PLAN 200-10500
  - 14 PLAN BY SCHELL & SCHELL O.L.S. DATED FEB. 15, 1961

**METRIC**  
 DISTANCES SHOWN ON THIS PLAN ARE IN METRES AND CAN BE CONVERTED TO FEET BY DIVIDING BY 0.3048.

**BEARING NOTE:**  
 ALL BEARINGS SHOWN HEREON ARE TRUE BEARINGS. ALL BEARINGS TO THE SOUTHWEST PART OF PART 9, PLAN 200-10500 HAVE A BEARING OF N 37°56'00" W AS SHOWN HEREON.

**DISTANCE NOTE:**  
 ALL DISTANCES SHOWN ON THIS PLAN ARE IN METRES AND CAN BE CONVERTED TO FEET BY DIVIDING BY THE SCALE FACTOR 0.3048.

**EXPROPRIATION OF LAND**  
 THE CORPORATION OF THE TOWN OF MILTON HEREBY CERTIFIES THAT APPROVAL WAS GRANTED TO THE CORPORATION OF THE TOWN OF MILTON ON THE \_\_\_\_\_ DAY OF \_\_\_\_\_ 2007 TO EXPROPRIATE THE LANDS DESIGNATED AS PARTS 1, 2, 3, 4, 5, 6, 7, 8, 9, 10, 11, 12 OF THIS PLAN AND VESTED IN THE CORPORATION OF THE TOWN OF MILTON UNDER THE EXPROPRIATIONS ACT, R.S.O. 1990, C. 28, AS AMENDED, PURSUANT TO THE PROVISIONS OF THE EXPROPRIATIONS ACT, R.S.O. 1990, C. 28, AS AMENDED, THIS PLAN IS SIGNED ON BEHALF OF THE CORPORATION OF THE TOWN OF MILTON BY THE MAYOR AND CLERK OF SAID CORPORATION ON OCTOBER 31, 2006.

WE HAVE THE AUTHORITY TO BIND THE CORPORATION  
 MAYOR, GORD KRANTZ

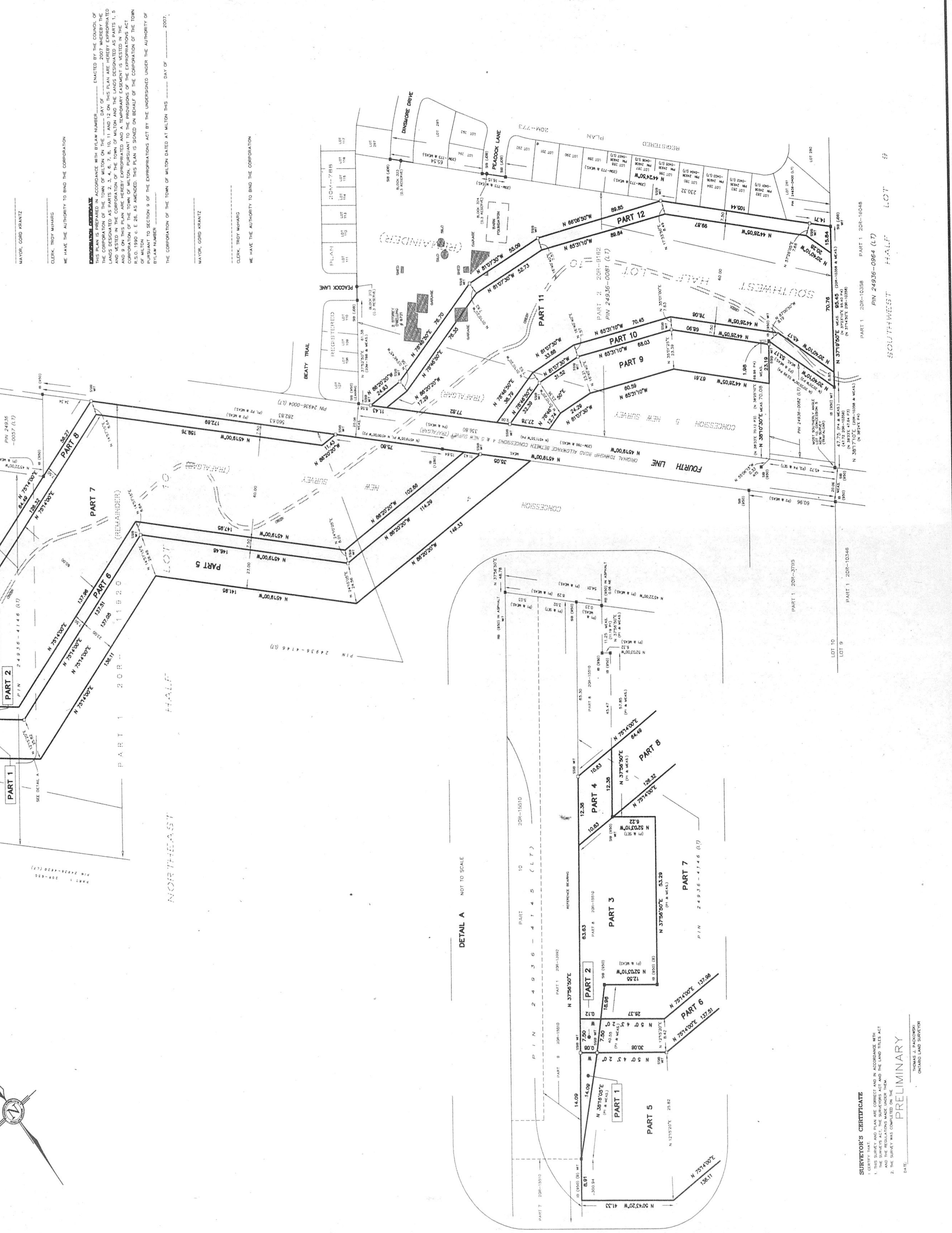
WE HAVE THE AUTHORITY TO BIND THE CORPORATION  
 CLERK, TROY MARRAS

WE HAVE THE AUTHORITY TO BIND THE CORPORATION  
 MAYOR, GORD KRANTZ

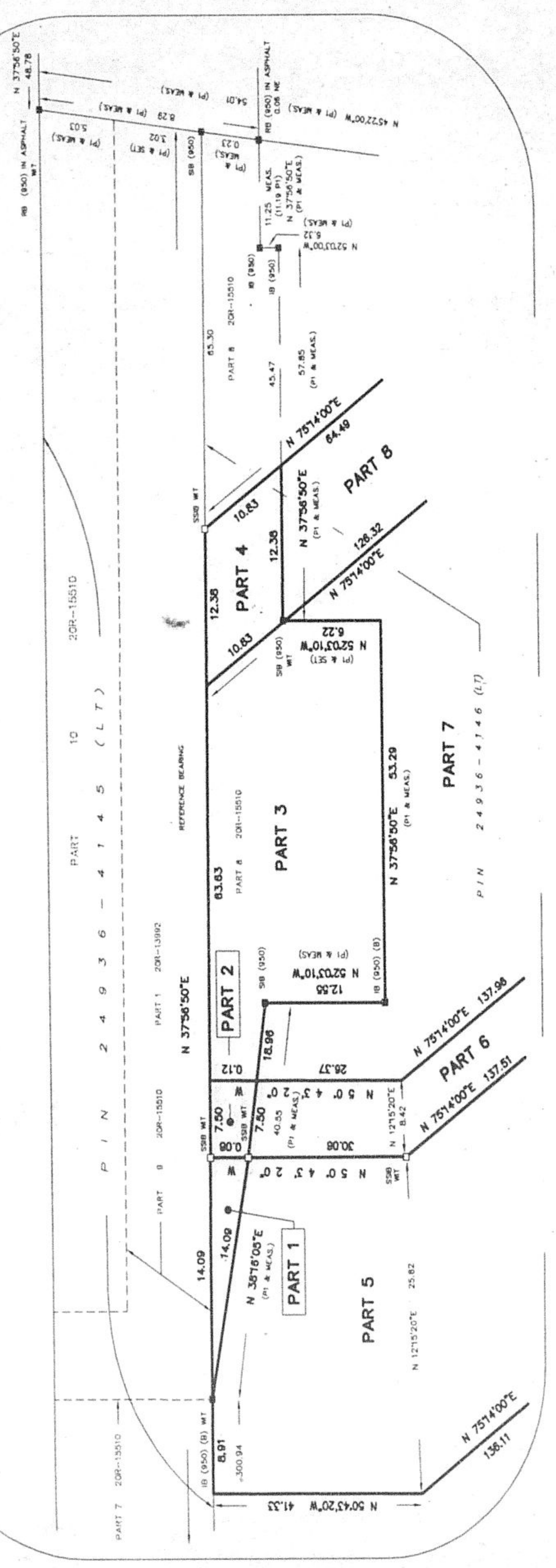
WE HAVE THE AUTHORITY TO BIND THE CORPORATION  
 CLERK, TROY MARRAS

**CONVESSION 4**  
 PART 1 20R-11820  
 PART 2 20R-11820  
 PART 3 20R-11820  
 PART 4 20R-11820  
 PART 5 20R-11820  
 PART 6 20R-11820  
 PART 7 20R-11820  
 PART 8 20R-11820  
 PART 9 20R-11820  
 PART 10 20R-11820  
 PART 11 20R-11820  
 PART 12 20R-11820

**CONVESSION 5**  
 PART 1 20R-11820  
 PART 2 20R-11820  
 PART 3 20R-11820  
 PART 4 20R-11820  
 PART 5 20R-11820  
 PART 6 20R-11820  
 PART 7 20R-11820  
 PART 8 20R-11820  
 PART 9 20R-11820  
 PART 10 20R-11820  
 PART 11 20R-11820  
 PART 12 20R-11820



DETAIL A NOT TO SCALE



**SURVEYOR'S CERTIFICATE**

1. THIS SURVEY AND PLAN ARE CORRECT AND IN ACCORDANCE WITH THE SURVEYORS ACT AND THE LAND TITLES ACT.
2. THE SURVEY WAS COMPLETED ON THE \_\_\_\_\_ DAY OF \_\_\_\_\_ 2007.

DATE: \_\_\_\_\_

**PRELIMINARY**

CUNNINGHAM MCCONNELL LIMITED  
 ONTARIO LAND SURVEYORS

LOT 10  
 SOUTHWEST HALF LOT 9

CUNNINGHAM MCCONNELL LIMITED  
 THOMAS A. MCCONNELL O.L.S.  
 MILTON, ONTARIO  
 LOT 117  
 (605) 878-8272

O.L.S. FILE # 05-3481