

YOUR REGIONAL REAL ESTATE PAGE

COMMERCIAL PROPERTY



ALAN MCDONALD
Broker
(905) 878-8101
al@royallepage.ca

CONDO UNIT FOR SALE

Rare opportunity to purchase 4,320 sq.ft. Milton industrial/commercial condominium unit. Fully air conditioned, sprinklered. Ideal for caterer or meat processor, but other industrial or office uses would be suitable. Call for details. \$569,900.



OPEN HOUSE
SUN. APRIL 29TH
2 PM - 4 PM
6190 15TH SD. RD.
MILTON

NEW PRICE
\$49,000



THERESA KEATES
Sales Representative
(905) 878-7777
www.TheresaKeates.com

FEELING LIKE A CAGED TIGER?

Beat the city congestion on your very own 38.9 acre private retreat. This huge bungalow boasts 20' high ceilings in the Grand Room, several cozy fireplaces, 3 bedrooms & an expansive country kitchen. Located close to Milton & Georgetown, this country estate offers the best of both worlds: privacy & proximity. Buy more home & more land than ever thought possible. Call now for an info package on this property & to book your own private viewing. Don't miss out! They are not making any more like this. Call Theresa Keates at 905-878-7777.

Virtual tour available at www.TheresaKeates.com.



MARILYN WORRALL
Salesperson
1-888-833-1945

ONE OF A KIND

Unique custom built home, 3/4 acre, multi-level open concept. Great room, kitchen, hardwood floors and 11' ceilings. Four season sunroom and hot tub. Four bdrms, 3 baths, 2800 sq. ft. Located in Erin. Mature trees. Priced at \$549,900.



FOR LEASE



CONNIE PRONG*
Sales Rep.
905-878-8101
connieprong@royallepage.ca

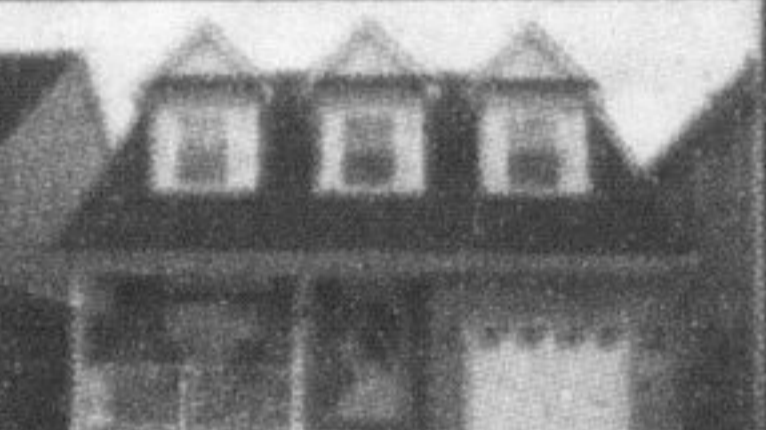


BRAND NEW

2,500 sq ft home with a double car garage, 4 bdrm, fireplace - just waiting for an executive couple or family to LEASE \$1700.00 plus utilities. Appliances and air conditioning may be provided. Walk to new shopping center and get connected in Milton. Very competitively priced and available now. (no pets please).

Call Connie Prong to view 905-878-8101

FOR LEASE



3 BEDROOM

2 bath, brand new, avail now, 1,650.00 per month.

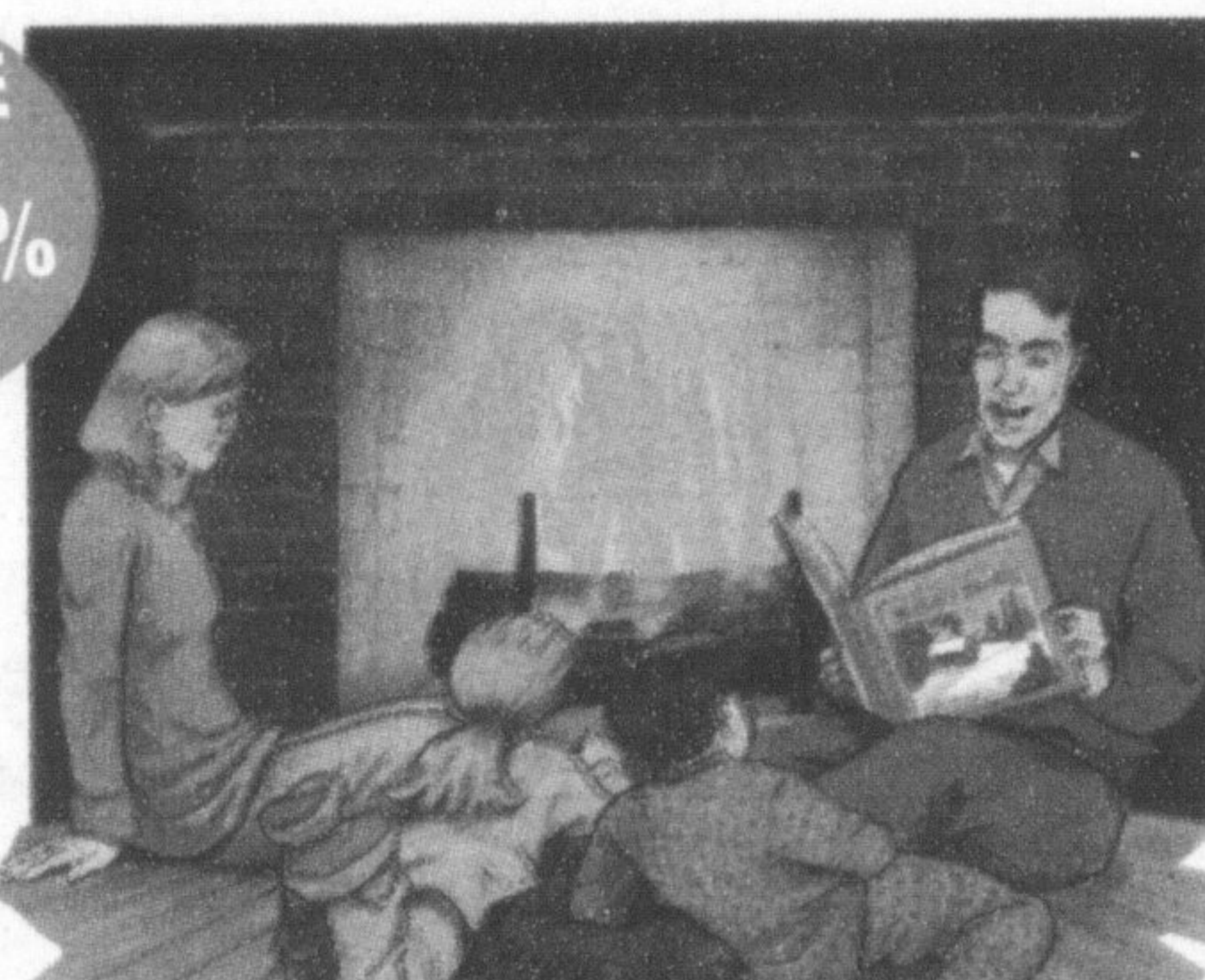
... Would love to list your house!!!!

CHOOSE CONNIE TO HELP YOU GET CONNECTED IN MILTON 905 878 8101

BUY, SELL, INVEST, LEASE THIS IS THE PERFECT TIME TO CALL ME!
(* a professional living in Milton for 20 years)



VARIABLE PRIME
-.95%



5yr Fixed
5.09%*

7yr Fixed
5.35%*

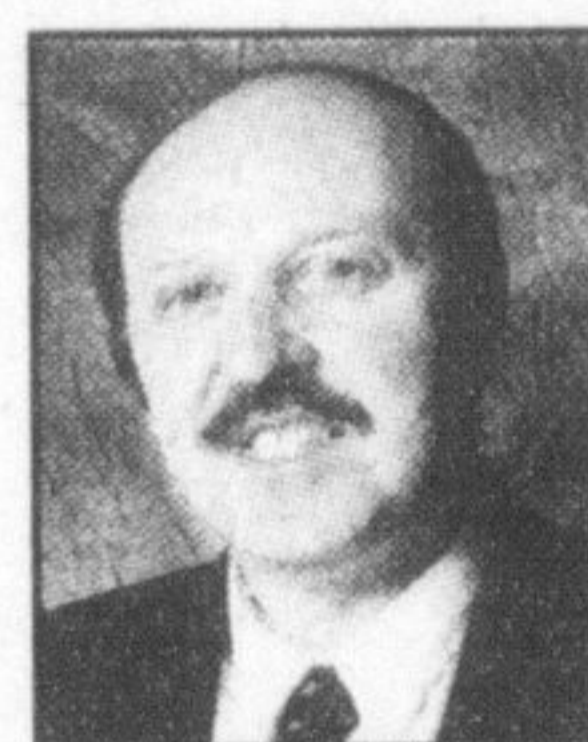
10yr Fixed
5.60%*

* Rates subject to change at any time without notice. ** O.A.C.

Call the "i dream team" for great rates, fast friendly service & stress free mortgages.

John, Kim, Lisa & Delfina

MA Mortgage Architects

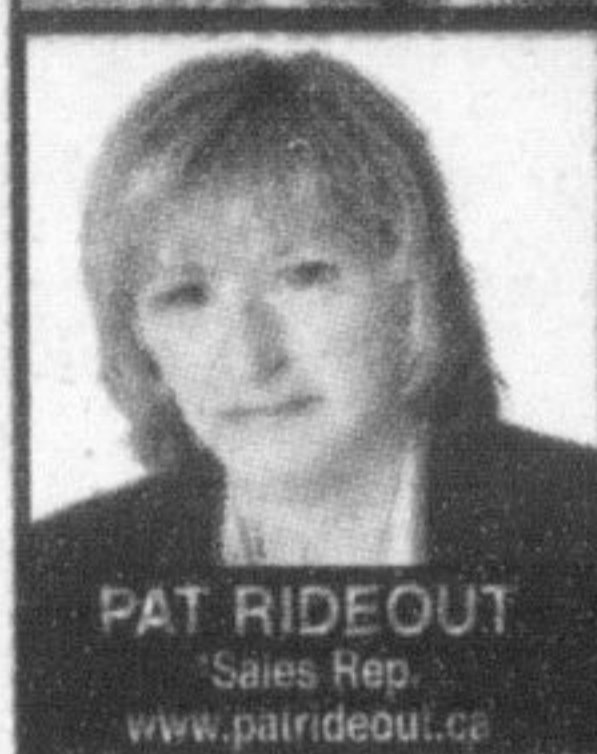
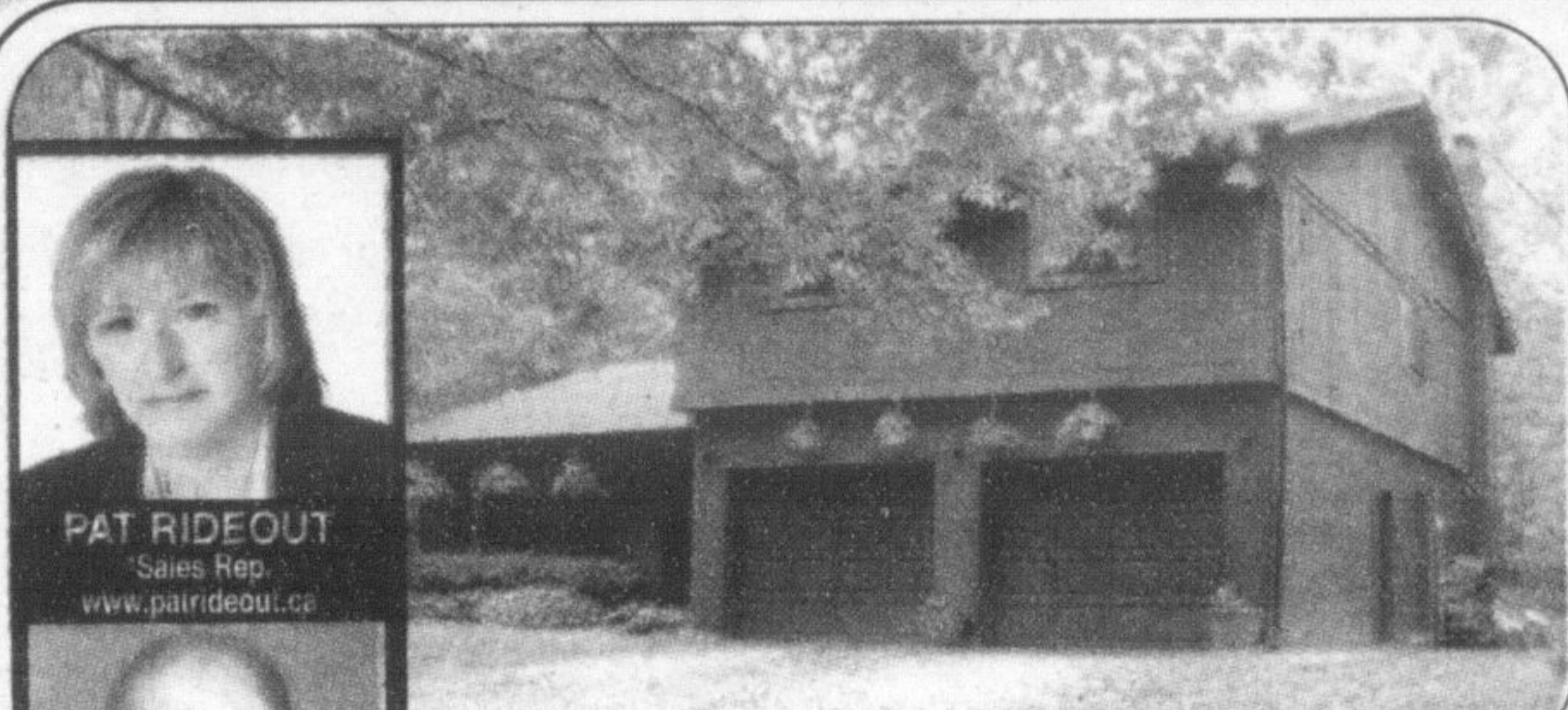


John Cavan AMP
Mortgage Planner

(905) 878-7213

14 Martin St., Milton, ON

Head Office:
6505 Mississauga Rd.,
Mississauga, ON



PAT RIDEOUT
Sales Rep.
www.patrideout.ca

DOUG HOWDEN
Broker
905-878-8101



COUNTRY AT ITS BEST - \$669,900

Nestled among the maples and birch trees sits this fabulous 4 bedroom home on 30 acres. All the room any family will require including a big country kitchen overlooking the main floor family room, finished basement with 2 walk-outs, and huge master bedroom with ensuite. Circular drive and attached double garage plus inground pool and cabana are a few of the features of this country retreat.

Call Pat & Doug for your personal viewing at (905)878-8101 or toll-free at 1-800-514-3316.



NEW PRICE

GREAT COUNTRY LOCATION - \$529,000

Totally rebuilt from the ground up 5 years ago, this stone and board/batten 3 bedroom backsplit is only minutes north of Burlington. Open concept design includes numerous upgrades: heated ceramic floors, custom kitchen, vaulted ceilings, hardwood floors, spacious master bedroom with upgraded ensuite, and many more. As an added bonus the property has a 30x29 workshop, perfect for the handyman. This one won't disappoint you. Listed for \$529,000. Call for an appointment.

Call Pat & Doug for your personal viewing at (905)878-8101 or toll-free at 1-800-514-3316.



NEW PRICE! GREAT INVESTMENT!



MIRELLA MARSHALL
Sales Rep.

MANDY SEDGWICK
Sales Rep.
905-878-8101



GREAT INVESTMENT \$559,000

Three bedroom ranch bungalow on 3/4 of an acre with a 30 X 60 workshop is a great offering to anyone looking for an investment opportunity. Let the rental income from the house and the workshop pay for your investment. Located close to town and highway access this is a desirable property. For more info please call Mirella or Mandy 905-878-8101



JACOB VANDERBREGGEN
Sales Rep.
905-878-8101
jacob@royallepage.ca



LINDA BRYSON
Sales Rep.
416-524-7856
lindabryson@royallepage.ca



EQUESTRIAN CENTRE

Featuring Indoor Arena, Beautiful Trainers quarters, 16 stall horse stable, 5 paddocks, sand ring set on 53 acres some conservation, 16 stall bank barn with hay loft (being built this spring) 7200 sq. Ft. Executive home to be built on spec (call for plans).



ECCENTRIC ENTERTAINER

In beautiful Moffat, this house has all the bells and whistles from Re-claimed railings to Geo-thermal heating, sitting on 1 acre surrounded by conservation, Large Kitchen, High ceilings, Pool w/walk out deck, separate entrance to 2nd floor, 2 car garage w/ pull through, this one won't disappoint!!



CAMPBELLVILLE BUNGALOW

3+ Bedroom bungalow on 5.2 acres backing onto conservation lands. In the picturesque village of Campbellville. Finished basement with walk out. Includes all appliances, central air & central vac. Call Linda to view! \$629,000.

905-876-5656
www.miltonhomes.ca



This page appears in the Independent & Free Press (circulation 25,065), Milton Champion (circulation 20,700) and Oakville Today (circulation 27,000). For booking information, call Sue Spizziri at 905-873-0301 or email: realestate@independentfreepress.com