

cover *story*

Mattamy Homes presents the breathtaking Hawthorne Village on the Escarpment

MILTON, ONTARIO, APRIL 18, 2007 – Mattamy Homes recently introduced its newest neighbourhood at Hawthorne Village on the Escarpment in Milton. The new phase includes 46' WideLot™ homes, and homes on 50' lots, plus coming soon WideLot™ townhomes, WideLot™ semis, Village Homes, and 36' WideLot™ detached homes.

All of Mattamy's homes in this community are ENERGY STAR®-qualified as a standard feature. The community is close to both urban amenities and scenic natural areas, including the breathtaking Niagara Escarpment.

Master-planned Hawthorne Village on the Escarpment follows many of the same development principles as highly successful Hawthorne Village – which won Best Community Development in Canada from the Canadian Home Builders' Association. This award recognizes outstanding achievement in creating attractive, exciting and innovative communities that enhance the quality of life for Canadians.

Celebrate Spring

On Sunday, May 6th, join 97.3 EZ Rock onsite for a springtime celebration of all that Hawthorne Village on the Escarpment has to offer, and the opening of Mattamy's newest neighbourhood here.

Enjoy some light refreshments, and you may take away a Mattamy chocolate Sunflower "Meadow Pop" as a memento (while quantities last). Bring along the children, who can have a temporary tattoo applied by a professional airbrush artist. And while you're there, enter to win a \$300 Gift Certificate redeemable at M&M Meat Shops.

To fully appreciate the superb designs available on a 50' lot, you can tour two model homes – the Stanbury and the Wellington. These models are also part of Mattamy North Halton Division's "Green Initiative" research program.

Visitors can provide feedback on the existing and prototype Green features demonstrated in these two homes. Both

homes, without the Green research components, are available for sale.

Just one of the homes available on a 50' lot is the 3,050 sq. ft., four-bedroom Coleridge (Elevation B). A bay window adds drama to the front of this stately home. Inside the foyer, the home office is immediately available.

Angled knee walls accentuate the formal living room, and the dining room includes an elegant coffered ceiling. This home's casual living area includes the great room with its gas fireplace flanked by windows, the breakfast room, and the kitchen complete with breakfast bar. The laundry room and powder room on this floor are convenient.

Upstairs, the master bedroom encompasses a spacious walk-in closet with its own large window, plus a sumptuous ensuite with an oval tub and separate shower. The other bedrooms, one of which has a study nook, share the main bath.

The 46' WideLot™ homes are available from a bungalow design at 1,338 sq. ft.,

plus two-storey designs from 2,172 to 3,058 sq. ft. from the \$380's; and homes on 50' lots from 2,670 to 3,906 sq. ft. from the \$450's. Coming soon, the WideLot™ townhomes will range in size from 1,130 to 1,873 sq. ft.; WideLot™ semis from 1,395 to 1,987 sq. ft.; Village Homes from 1,051 to 1,357 sq. ft., and 36' WideLot™ detached homes from 1,382 to 2,318 sq. ft.

Named the Ontario Home Builders' Association 2006 Home Builder of the Year for setting the standard for the rest of the industry in Ontario through its leadership, Mattamy Homes is also Canada's largest new home builder.

Hawthorne Village on the Escarpment is showcased at the Hawthorne Village Sales Office at 1550 Derry Road, three minutes west of Trafalgar. Hours are Monday to Thursday from 1 to 8 p.m.; Fridays from 1 to 6 p.m.; weekends and holidays from 11 a.m. to 6 p.m. For more information, 905-875-2692 or visit www.mattamyhomes.com.

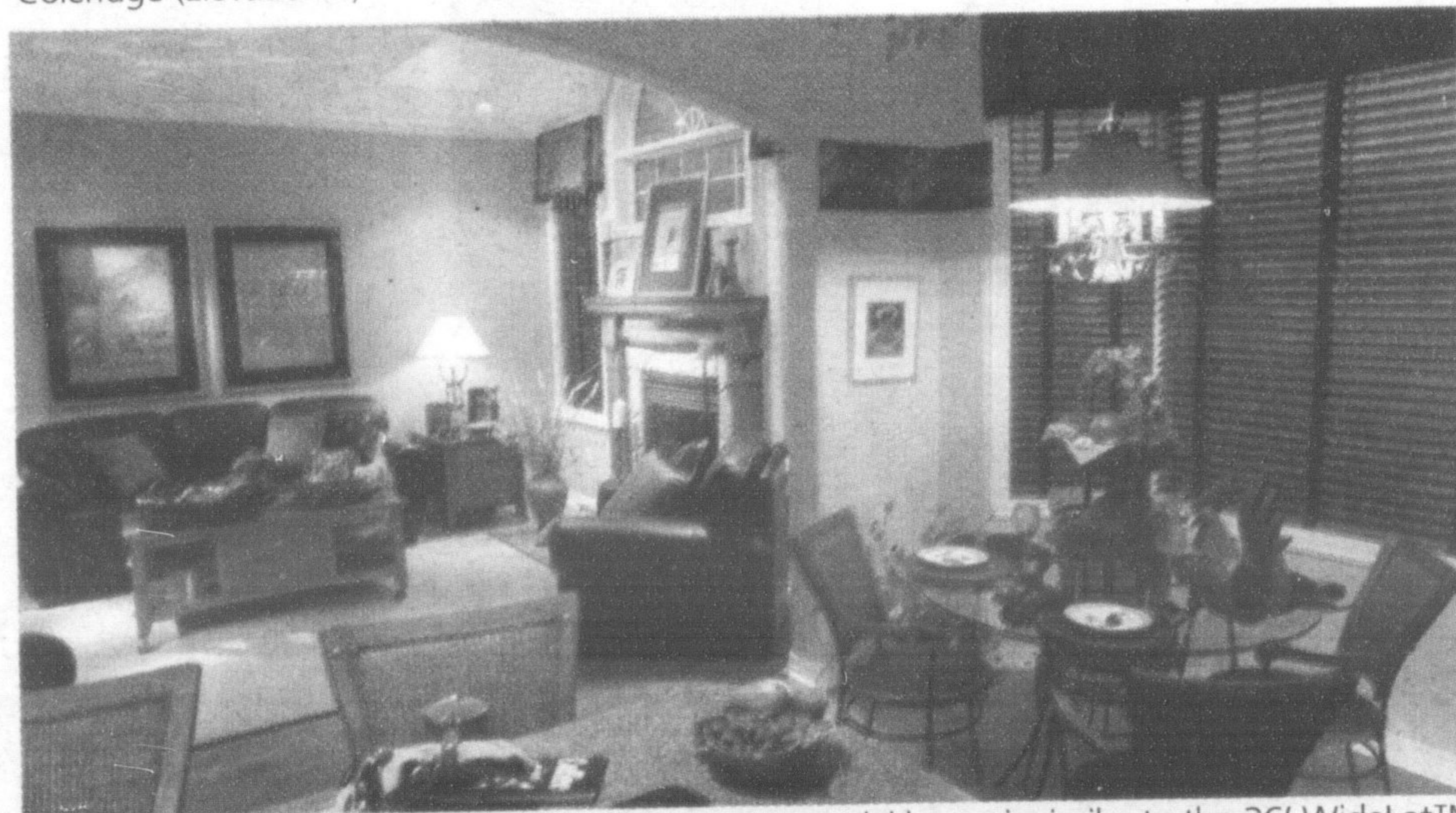
Photos by Jac Jacobson



Just one of the stunning homes available on a 50' lot is the 3,050 sq. ft., four-bedroom Coleridge (Elevation B)



The 1,338 sq. ft. 46' WideLot™ Abbetson (Elevation A) bungalow has charming peaked gables



The family room in the fully decorated Pottington model home is similar to the 36' WideLot™ Shady Glen II available at Hawthorne Village on the Escarpment.



The cosy family room in the Powell model home is similar to the 1,858 sq. ft. 36' Norriston design at Hawthorne Village on the Escarpment.