

GORRUD'S AUTO PLUS

Showing Our Customers The Difference Since 1960.

Milton's Largest Pre-Owned Dealer

[Click Here](#)

www.gorruDSAUTOGROUP.COM

THIS WEEK'S SPECIAL!

Only 21,000 km!!!
P. moonroof, alum rims, p. seat, have all maintenance records, balance GM warranty.

\$172 **\$1,500**
Bi-Weekly Down

2006 BUICK ALLURE



\$16,978 Sale Price

OVER 250 VEHICLES ON-GROUND

THIS WEEK'S SPECIAL!

2004 GMS SIERRA SLE X-CAB 4X4
V-8 (5.3) engine, auto, air, pw, pl, cruise, tilt Z-71, auto trac 4x4, 104,000 km.



\$199 **\$2,000**
Bi-Weekly Down

\$19,978 Sale Price

2005 HISSAN X-TRAIL LE AWD



\$19,978 Sale Price
\$199 Bi-Weekly
\$2,000 Down

2005 PONTIAC MONTANA EXTENDED



\$12,978 Sale Price
\$129 Bi-Weekly
\$1,500 Down

2001 HYUNDAI ELANTRA GL



\$6,678 Sale Price
\$85 Bi-Weekly
\$500 Down

2003 PONTIAC GRAND AM GT



\$10,478 Sale Price
\$107 Bi-Weekly
\$1,000 Down

2004 MERCURY GRAND MARQUIS LS



\$14,978 Sale Price
\$151 Bi-Weekly
\$1,500 Down

2002 SATURN SL



\$6,978 Sale Price
\$89 Bi-Weekly
\$500 Down

2003 PONTIAC GRAND AM SE

\$7,978 Sale Price
\$85 Bi-Weekly
\$500 Down

2005 DODGE GRAND CARAVAN SE

\$13,978 Sale Price
\$145 Bi-Weekly
\$1,000 Down

MAKE	MODEL	2007 PURCHASE	2007 PAYMENTS*	2007 DOWN
Cadillac	Escalade	\$69,978	\$687	\$7,500
Chev	Express 3/4 Ton Cargo Van	\$24,778	\$238	\$3,500
GMC	Yukon XL Denali	\$64,878	\$656	\$5,000
Hyundai	Sonata	\$17,978	\$178	\$2,000
Pontiac	G6	\$16,978	\$172	\$1,500
Toyota	Matrix XR	\$22,578	\$228	\$2,000

MAKE	MODEL	2006 PURCHASE	2006 PAYMENTS*	2006 DOWN
Buick	Allure CX	\$16,978	\$172	\$1,500
Buick	Lucerne CXL	\$26,778	\$259	\$3,500
Chev	Impala LS	\$17,878	\$173	\$250
Ford	Ranger X-Cab Sport	\$18,878	\$188	\$2,000
Ford	Taurus	\$13,978	\$139	\$1,500
Ford	Taurus 3.0 SE Auto	\$13,978	\$139	\$1,500
Ford	Taurus SE	\$13,978	\$139	\$1,500
Ford	Taurus SE	\$13,978	\$139	\$1,500
GMC	Sierra 1500 SLE 4X4 CREW CAB	\$27,878	\$271	\$3,500
Hyundai	Accent GL	\$13,978	\$139	\$1,500
Mercury	Grand Marquis LS Premium	\$21,878	\$206	\$3,500
Nissan	Murano 3.5 S AWD	\$29,978	\$294	\$3,500
Nissan	Xterra S 4X4	\$26,978	\$261	\$3,500
Pontiac	G6 SE	\$14,678	\$143	\$2,000
Pontiac	Montana 5 V6 Extended	\$15,978	\$157	\$2,000
Toyota	Corolla CE'C' Package	\$17,678	\$175	\$2,000
Toyota	Matrix	\$18,878	\$183	\$2,500
Toyota	Matrix 'B' Package	\$18,879	\$183	\$2,500
Toyota	Sienna CE 7 Passenger	\$26,778	\$259	\$3,500
Toyota	Sienna LE 7 Passenger	\$29,978	\$294	\$3,500
Toyota	Sienna LE 7 Passenger	\$26,978	\$261	\$3,500
Toyota	Sienna LE 8 Passenger	\$25,978	\$250	\$3,500
Toyota	Sienna LE 8 Passenger	\$28,678	\$279	\$3,500
Toyota	Sienna LE 8 Passenger	\$27,878	\$271	\$3,500
Toyota	Sienna LE 8 Passenger	\$24,978	\$239	\$3,500
Toyota	Sienna LE 8 Passenger	\$26,978	\$294	\$3,500
Toyota	Sienna XLE Ltd. AWD 7 Pass.	\$45,100	\$443	\$5,000
Toyota	Tundra Dbl. Cab 4x4 TRD Off-Road	\$36,978	\$364	\$4,000

MAKE	MODEL	2005 PURCHASE	2005 PAYMENTS*	2005 DOWN
Buick	Allure CX	\$13,978	\$139	\$1,500
Chev	Cobalt LS	\$11,978	\$118	\$1,500
Dodge	Grand Caravan	\$14,878	\$139	\$1,500
Dodge	Grand Caravan Sport	\$13,978	\$141	\$2,500
Ford	Escape 4X4	\$16,978	\$163	\$2,500
Ford	Focus ZX5 SES	\$13,978	\$129	\$2,500
Ford	Focus ZXW SE	\$12,978	\$124	\$2,500
Ford	Focus ZXW SES	\$13,978	\$129	\$2,500
GMC	Sierra 1500 SLE Extended Cab	\$19,778	\$198	\$2,000
Nissan	Maxima 3.5 SL	\$23,878	\$237	\$2,500
Nissan	Sentra 1.8 S	\$11,978	\$123	\$1,000
Nissan	X-Trail LE AWD	\$19,978	\$195	\$2,500
Pontiac	G6 V6	\$14,978	\$141	\$2,500
Pontiac	Grand Prix GT	\$13,778	\$138	\$1,500
Pontiac	Grand Prix GXP	\$20,978	\$211	\$2,000
Pontiac	Montana Extended	\$12,978	\$129	\$1,500
Toyota	4Runner LIMITED V8	\$36,978	\$369	\$3,500
Toyota	4Runner SRS V8	\$33,978	\$327	\$4,500
Toyota	Camry SE	\$19,978	\$199	\$2,000
Toyota	Corolla CE 'C'	\$15,978	\$152	\$2,500
Toyota	Matrix	\$15,878	\$151	\$2,500
Toyota	Matrix XR	\$18,778	\$182	\$2,500
Toyota	Tundra SR5 Double Cab	\$28,978	\$283	\$3,500

MAKE	MODEL	2004 PURCHASE	2004 PAYMENTS*	2004 DOWN
Cadillac	De Ville	\$17,995	\$179	\$2,000
Chev	Avalanche 1500 4x4 LT	\$23,878	\$237	\$2,500
Chev	Venture LS	\$12,798	\$122	\$2,000
Chrysler	PT Cruiser Touring Edition	\$12,878	\$129	\$1,500
Ford	Escape Limited 4x4	\$17,878	\$168	\$3,000
Ford	Escape Limited 4x4	\$19,978	\$189	\$3,000
Ford	Escape XLT	\$16,978	\$158	\$3,000
Ford	Escape XLT 4x4	\$18,678	\$176	\$3,000
Ford	Escape XLT 4x4 Duratec	\$16,778	\$161	\$2,500
Ford	F-150 XLT	\$19,978	\$186	\$3,500
Ford	F-150 XLT 4x4 Crew Cab	\$21,978	\$207	\$3,500
Ford	F-150 XLT Crew Cab 4x4	\$22,978	\$228	\$2,500
Ford	F-150 XLT Crew Cab 4x4 FX4	\$24,978	\$249	\$3,500
Ford	F-350 Super Duty Crew Cab King Ranch 4x4 Diesel	\$38,878	\$380	\$4,000

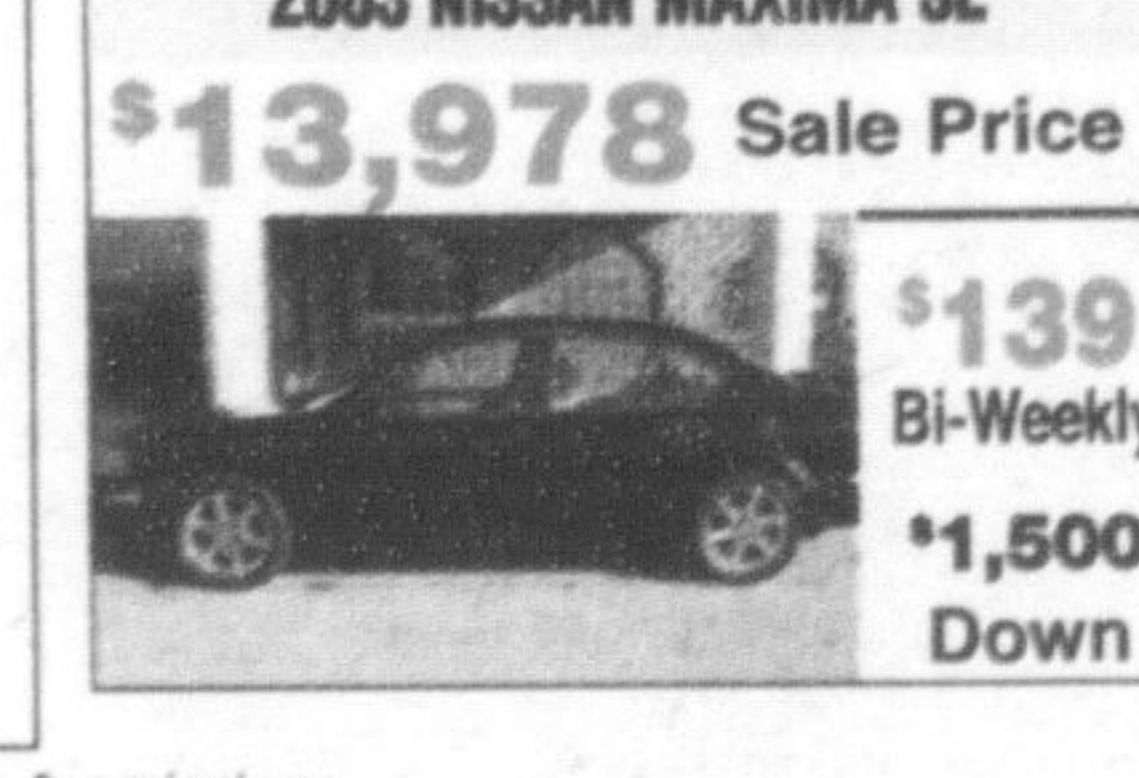
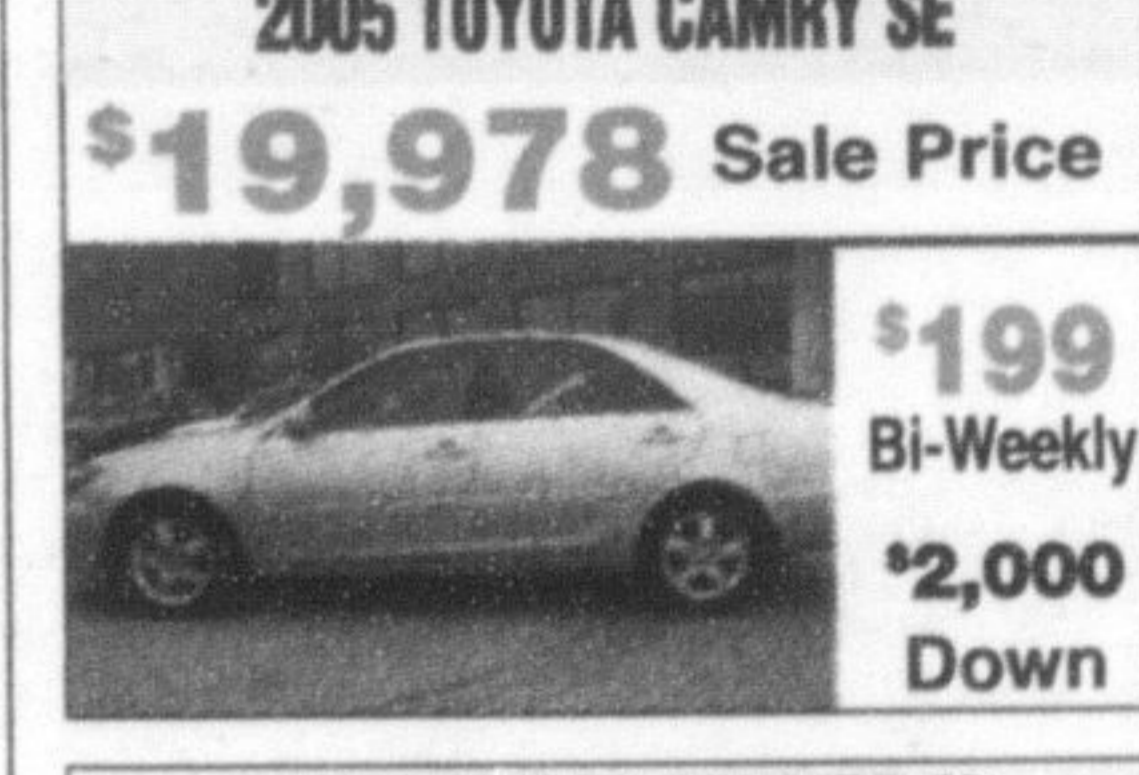
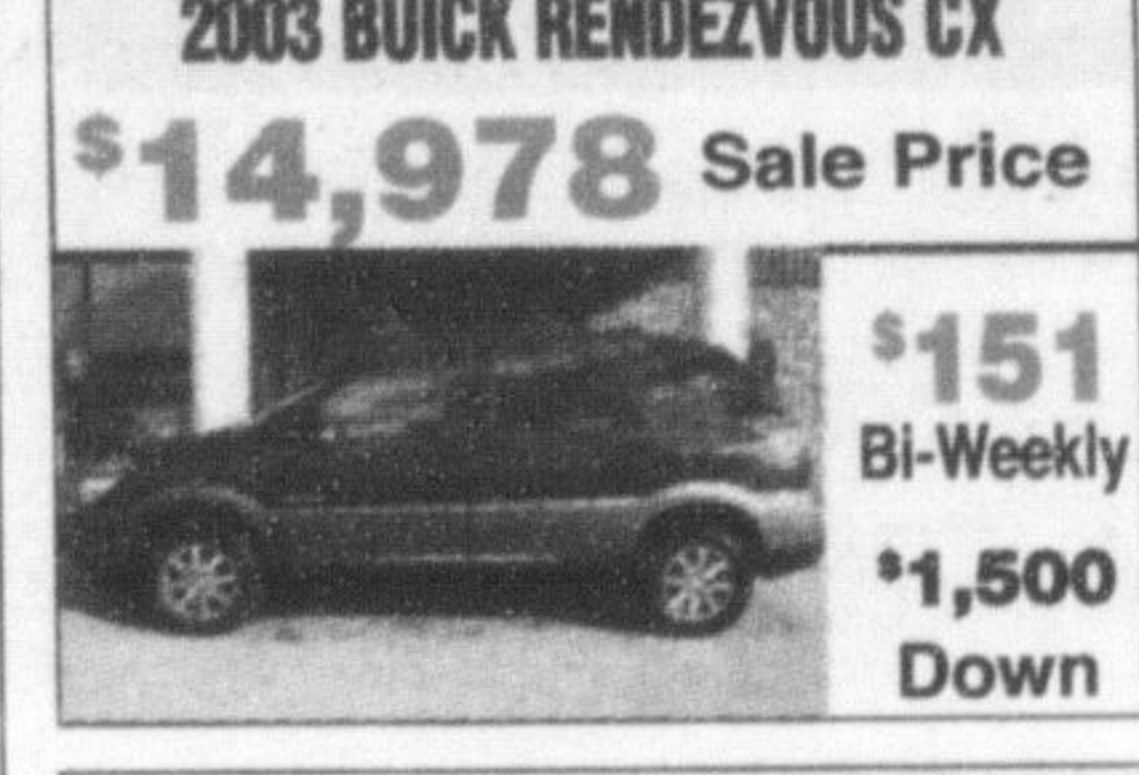
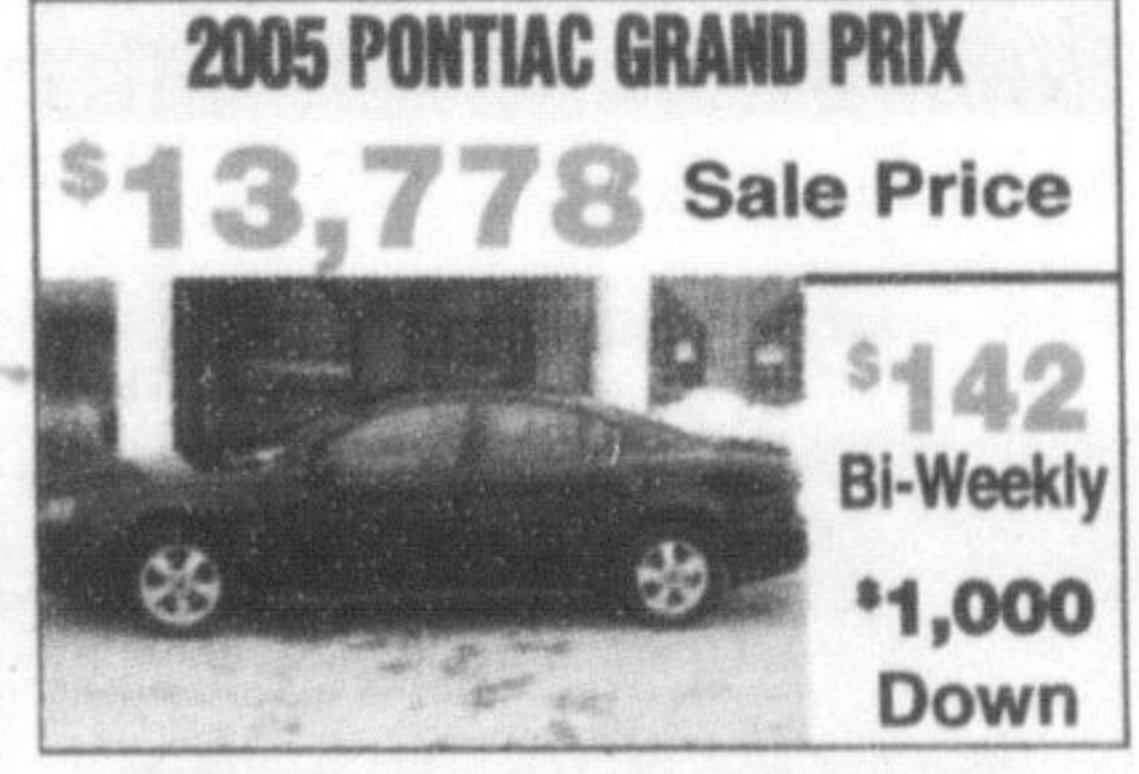
MAKE	MODEL	2003 PURCHASE	2003 PAYMENTS*	2003 DOWN
Ford	Focus SE	\$9,978	\$101	\$1,000
Ford	Focus ZTW	\$12,978	\$129	\$1,500
Ford	Freestar SEL	\$14,878	\$139	\$2,500
GMC	Sierra 1500 SLE 4x4 Ext. Cab SWB	\$19,978	\$195	\$2,500
Hyundai	Santa Fe GL	\$14,878	\$145	\$2,000
Kia	Sedona EX	\$16,878	\$162	\$2,500
Kia	Sorento EX 4x4	\$20,978	\$197	\$3,500
Kia	Sorento LX 4x4	\$15,978	\$152	\$2,500
Lexus	ES330	\$31,978	\$310	\$4,000
Mazda	Mazda3 GT 2.3	\$16,978	\$163	\$2,500
Mazda	Mazda6 Sport	\$19,778	\$193	\$2,500
Mercury	Grand Marquis LS	\$14,978	\$151	\$1,500
Nissan	Pathfinder LE	\$25,978	\$249	\$3,500
Pontiac	Montana Ext.	\$13,878	\$139	\$1,500
Pontiac	Sunfire SLX	\$7,978	\$85	\$500

MAKE	MODEL	2002 PURCHASE	2002 PAYMENTS*	2002 DOWN
Acura	TL 3.2	\$18,978	\$184	\$2,500
Buick	Rendezvous CX	\$14,978	\$151	\$1,500
Chev	Cavalier Z24	\$10,978	\$112	\$1,000
Chev	Venture	\$10,978	\$108	\$1,500
Chev	Venture	\$7,978	\$85	\$500
Dodge	Caravan SE	\$10,978	\$108	\$1,500
Dodge	Caravan SE	\$10,978	\$112	\$1,000
Dodge	Caravan SE 7 Pass.	\$11,878	\$112	\$2,000
Dodge	Caravan Sport	\$12,878	\$123	\$2,000
Dodge	Grand Caravan Sport	\$14,378	\$139	\$2,000
Dodge	Grand Caravan Sport	\$13,978	\$135	\$2,000
Dodge	Grand Caravan Sport	\$13,978	\$139	\$1,500
Dodge	Grand Caravan Sport	\$10,995	\$103	\$2,000
Ford	Escape XLS	\$14,878	\$149	\$1,500
Ford	Taurus SEL	\$10,978	\$108	\$1,500
Ford	Windstar Sport	\$10,998	\$108	\$1,500
Honda	CR-V EX-L	\$20,695	\$198	\$3,000
Hyundai	Accent GL	\$8,978	\$95	\$500
Hyundai	Elantra GL	\$9,978	\$101	\$1,000
Hyundai	Santa Fe GL	\$15,778	\$155	\$2,000
Hyundai	Sonata GLX V6	\$12,978	\$124	\$2,000
Infiniti	G35 Aero Pkg.	\$20,578	\$197	\$3,000
Kia	Rio RX-V Sport	\$11,678	\$115	\$1,500
Kia	Sedona EX	\$11,978	\$118	\$1,500
Kia	Sedona EX	\$11,978	\$118	\$1,500
Kia	Sedona LX 7 Pass.	\$9,778	\$99	\$1,000
Kia	Sorento LX 4x4	\$17,678	\$169	\$2,500
Kia	Spectra	\$7,978	\$85	\$500
Lexus	ES300	\$24,978	\$244	\$3,000
Mazda	MPV LX	\$12,978	\$129	\$1,500
Mazda	Protege5 ES	\$13,678	\$137	\$1,500
Nissan	Altima 2.5 S	\$16,478	\$162	\$2,000
Nissan	Maxima SE	\$13,978	\$139	\$1,500
Olds	Alero GL	\$11,978	\$114	\$2,000
Pontiac	Grand Am GT	\$10,478	\$107	\$1,000
Pontiac	Grand Am SE	\$9,978	\$101	\$1,000
Pontiac	Grand Am SE	\$9,978	\$101	\$1,000
Pontiac	Grand Am SE	\$7,978	\$85	\$500
Pontiac	Montana 7 Pass.	\$12,978	\$124	\$2,000
Pontiac	Sunfire SLX	\$9,978	\$97	\$1,500
Toyota	4Runner SR5 'B' Pkg. 4x4	\$24,987	\$239	\$3,500
Toyota	4Runner SR5 4x4	\$25,878	\$249	\$3,500
Toyota	Camry SE V6	\$17,978	\$183	\$1,500
Toyota	Rav4 4x4	\$17,395	\$167	\$2,500
Toyota	Rav4 Chili AWD	\$19,978	\$195	\$2,500
Toyota	Sienna CE	\$15,878	\$151	\$2,500
Toyota	Tundra X-Cab Ltd. Edition 4x4	\$25,878	\$259	\$2,500

MAKE	MODEL	2001 PURCHASE	2001 PAYMENTS*	2001 DOWN
Chev	TrailBlazer LTZ 4x4	\$15,878	\$151	\$2,500
GMC	Jimmy SLS 4x4	\$11,978	See us.	See us.
Hyundai	Elantra GT	\$10,578	\$103	\$1,500
Saturn	S-Series SL1	\$6,978	\$89	\$500
Saturn	S-Series SL1	\$6,978	\$89	\$500
Toyota	Highlander 'B' Pkg.	\$19,878	\$194	\$2,500

MAKE	MODEL	2000 PURCHASE	2000 PAYMENTS*	2000 DOWN
Buick	Century Custom	\$9,978	\$128	\$500
Hyundai	Elantra GL	\$6,698	\$85	\$500

MAKE	MODEL	2000 PURCHASE	2000 PAYMENTS*	2000 DOWN
Toyota	Sienna CE	\$12,978	\$161	\$1,000



* Bi-weekly payments are based on 60 month term, except 2002 models or older which are based on 48 month term @ 8.49% rate of interest. Down payments vary by vehicle and are shown below or beside bi-weekly payments. Subject to errors & omissions.

THE GORRUD DIFFERENCE

- ✓ Milton's Largest Pre-Owned Dealership (Over 250 Vehicles On-Ground)
- ✓ Proudly Serving Our Customers For Over 47 Years
- ✓ GORRUD'S GUARANTEED VALUE (We Guarantee You Won't Find Better Value)
- ✓ GORRUD'S GUARANTEED EXCHANGE POLICY (Satisfaction Guaranteed)
- ✓ GORRUD'S POWERTRAIN WARRANTY (Peace of Mind Protection)
- ✓ GORRUD'S 30-DAY MECHANICAL WARRANTY (Peace of Mind Protection)
- ✓ **ProCheck MEDICAL** (The Most Comprehensive Vehicle History Report Available)

410 STEELES AVENUE, IN MILTON 1-800-731-6580 OPEN SUNDAYS 12:00 AM TO 4:00 PM OVER 250 VEHICLES IN STOCK