

**Country Depot**

# Spring into Gardening!



*For early colour in your garden pick up some hardy pansies!*

*Pansies, just arrived!*

**Apply NOW!**

**Lawn Fertilizer and Crabgrass Preventer**  
16-4-8. 9 kg. bag.  
367-1610

**24<sup>97</sup>**



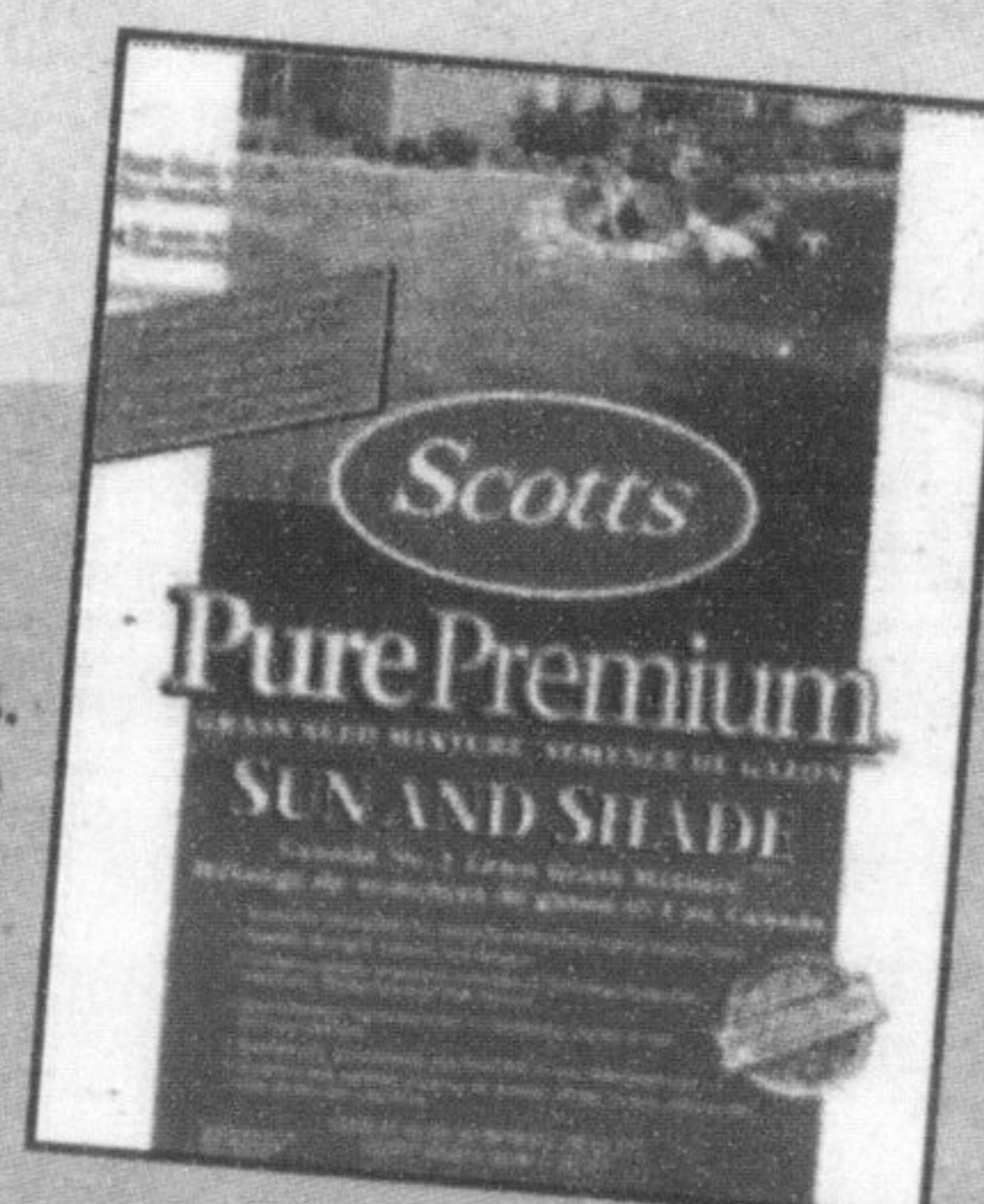
**Turf Builder Pro Fertilizer**  
31-3-8. weed control,  
13.3 lbs. Covers 400 m<sup>2</sup>.  
367-1190

**14<sup>97</sup>**



**Sun and Shade Grass Seed**  
Seeds up to 164 sq. metres.  
For a thick, more weed free lawn. 367-6012

**11<sup>97</sup>**



**3 Way Mix**  
Peat humus, bark fines and manure. 30 litres.  
369-3181

**4 for 12<sup>00</sup>**



**JUST ARRIVED!**

*Hummingbird Nectar and Feeders!*

**Upside Down Finch Feeder**

18" clear tube, 6 feeding ports. Dispenses nyjer and finch seed. Will deter house finches who will not feed upside down. Attracts gold & purple finches, redpolls and pine siskins.  
278-5034

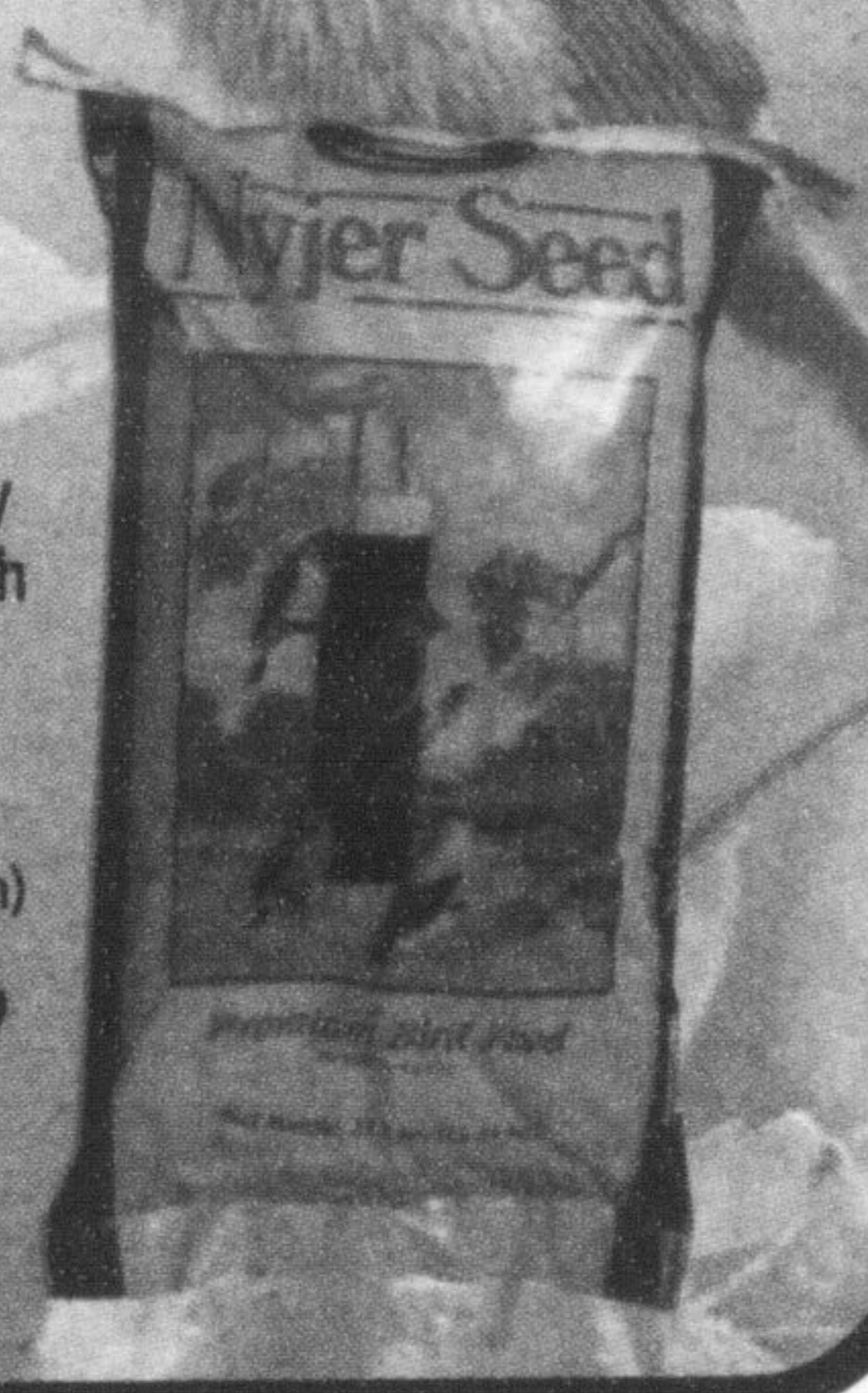
**9<sup>97</sup>**



**Nyjer Bird Seed**

Highly desired by finches for its high fat and protein content. 50 lb.  
278-1111  
(Not exactly as shown)

**39<sup>97</sup>**



**Top Soil**

30 litres. All-purpose. For lawns or gardens.  
369-3152

**5 for 12<sup>00</sup>**



**Corn Gluten Lawn Food**

8-2-4. 9 kg. 100% natural plant food. Unique granules eliminate dust - make spreading easier.  
367-1753

**26<sup>99</sup>**



**Agri-Fab**

**Push Broadcast Spreader**

85 lb capacity. Poly hopper resists corrosion. 8' to 10' spread width. 10" x 1.75" treadcap wheels. 3/4" 20 gauge undercarriage. Foam comfort grip handle. Metal legs.  
362-2005

**74<sup>97</sup>**

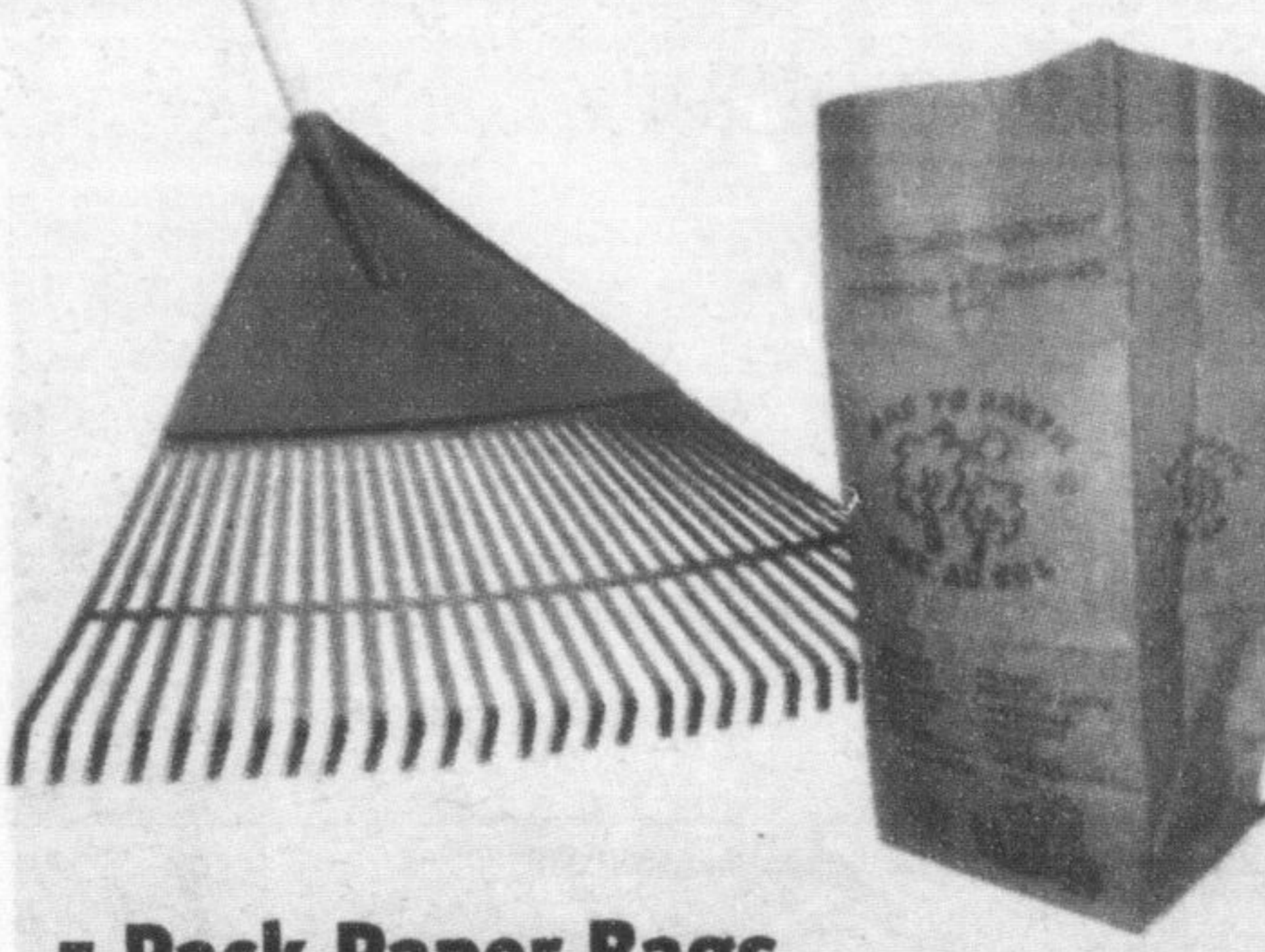


**5 Pack Paper Bags**  
16" x 35" x 12". Biodegradable.  
197-5214

**2<sup>99</sup>**

**30" Leaf Rake**  
366-1690

**11<sup>97</sup>**



**LAST CHANCE for Winter Clothing! 40% Off**

**Get ready for show season!**  
We've got all of your needs covered. Come in and see Claudette Costa, the newest member of our team. We're expanding our equine department to serve you better. Stop by and see all of our new products and give your suggestions.



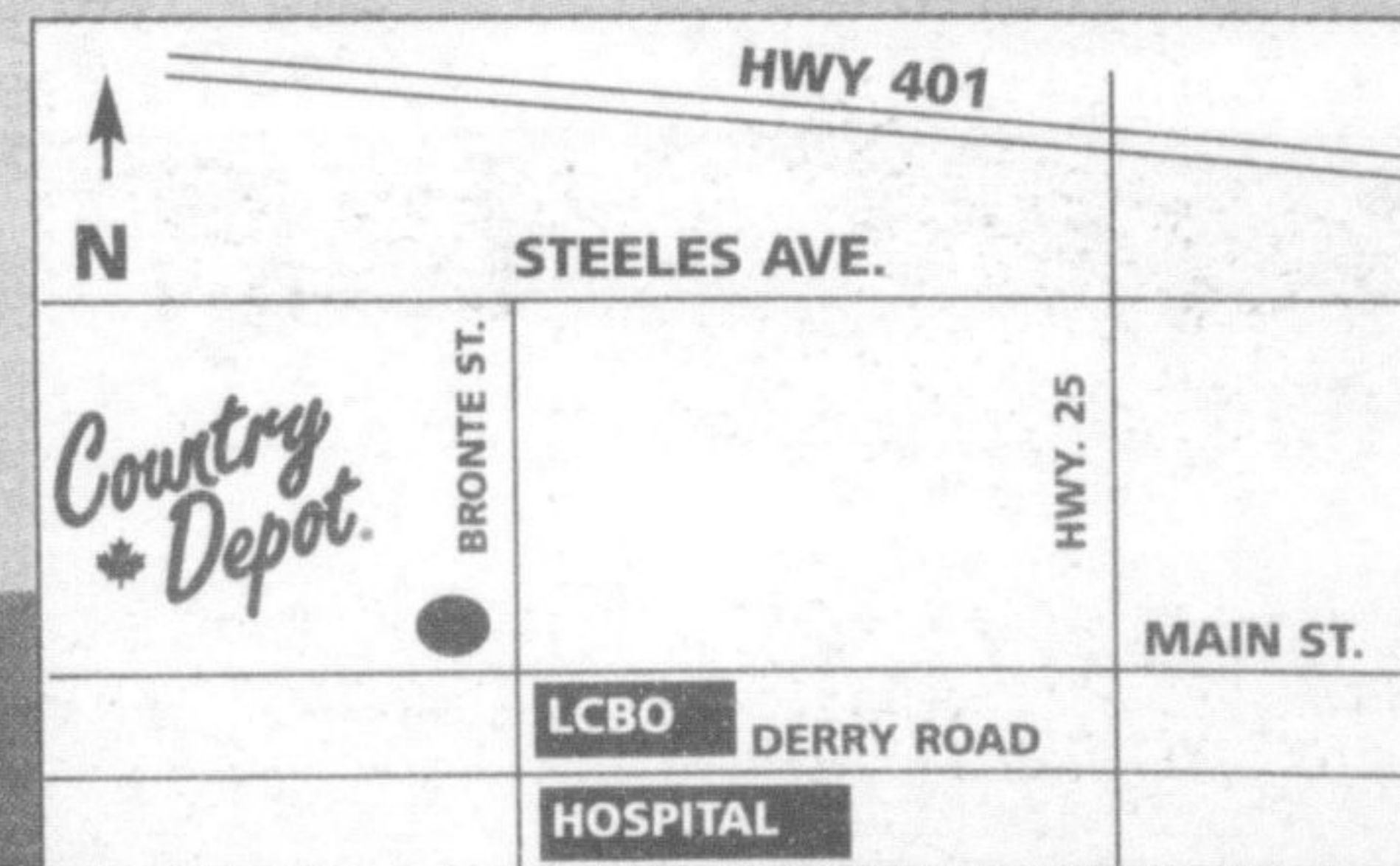
**Garage in a Box**  
2" diameter, 17 gauge steel tubing with grey powder coated finish. UV protected, waterproof.  
388-4823

**499<sup>97</sup>**



**Rain Barrel**  
368-7050/1

**89<sup>97</sup>**



**Country Depot**

**Milton Country Depot formerly The CO-OP**  
28 Bronte St. N. (905) 878-2391  
Store Hours: Mon-Fri 8:00 - 6:00 Saturday: 8:00 - 5:00 Closed Sunday  
Sale prices in effect April 13th to April 22nd or while quantities last.