

Canadian Red Cross  
 Injuries kill more children under 19 than all other causes of death combined. Take a Red Cross first aid course.

# Dateline

• from DATELINE on page A10  
 Thursday March 29  
 The Town of Milton presents a sem-

inar entitled 'Iron for Women' at 10:30 a.m. at the Milton Leisure Centre on Main Street. The seminar is free for

centre members and \$5 for non-members. To register, call Tracy Hasselfeldt at (905) 878-7946, ext. 2706.

The Halton Women's Centre, suite 229 in Hopedale Mall, 1515 Rebecca St. in Oakville, holds its free Caring and Sharing Circle from 1 to 3 p.m. For more information, call (905) 847-5520 or visit [www.haltonwomenscentre.org](http://www.haltonwomenscentre.org).

The Deck youth centre, 200 Main St. (rear entrance), invites students in grades 6 to 8 to drop by between 3:30 and 6:15 p.m. to play a game of pool or just hang out. High school students are invited between 7 and 10 p.m.

The Fine Arts Society of Milton's Evening Group of Artists meets from 7 to 10 p.m. The informal environment provides artists with an opportunity to exercise their drawing skills. For more information, call Janis at (905) 854-5753.

Milton District Hospital holds a one-on-one breastfeeding clinic with a certified lactation consultant from 7 to 9 p.m. For more information or to make an appointment, call Jill Hicks at (905) 878-2383, ext. 7610.

The Burlington Prostate Cancer Support Group, sponsored by the Canadian Cancer Society, meets at 7 p.m. at 1251 Northside Rd., in Burlington. For more information, call (905) 332-0060.

Friday March 30

The Deck youth centre, 200 Main St. (rear entrance), invites high school students to drop by between 7 and 11 p.m. to play a game of pool or just hang out.

Milton District Hospital holds a group session breastfeeding clinic with a certified lactation consultant from 11 a.m. to 12:30 p.m. For more information or to make an appointment, call Jill Hicks at (905) 878-2383, ext. 7610.

Friday March 30 - 31

The Milton branch of the Canadian Federation of University Women holds its giant used book sale at Milton Mall during mall hours. It features books, CDs, DVDs, videos, computer games and talking books, and raises money for scholarships.

Saturday March 31

The Salvation Army/Khi Community holds its Run Club at 8 a.m. with a one-hour run. For meeting location and route, call (905) 875-1022.

The Milton branch of the Royal Canadian Legion, 21 Charles St., holds a meat roll at 4 p.m. in the clubroom.

The Halton Women's Centre, suite 229 in Hopedale Mall, 1515 Rebecca St., holds a workshop entitled 'Writing Your Way/Transforming Words' from 10 a.m. to 12:30 p.m. The cost is \$15. For more information, call (905) 847-5520 or visit [www.haltonwomenscentre.org](http://www.haltonwomenscentre.org).

Sunday April 1

The Milton Choristers presents The Silly Side of Singing at 3 p.m. at Knox Presbyterian Church, 170 Main St. E. Tickets cost \$20 for adults, \$15 for seniors and students, \$10 for kids and \$50 for a family (two adults and up to four kids). Tickets are available at Milton Photo, McCuaig Insurance, on-line at [www.miltonchoristers.com](http://www.miltonchoristers.com) or by calling (905) 878-1632.

The Grace Anglican Chancel Choir presents Harvest of Sorrows by Joseph Martin at 7:30 p.m. at the church, 317 Main St.

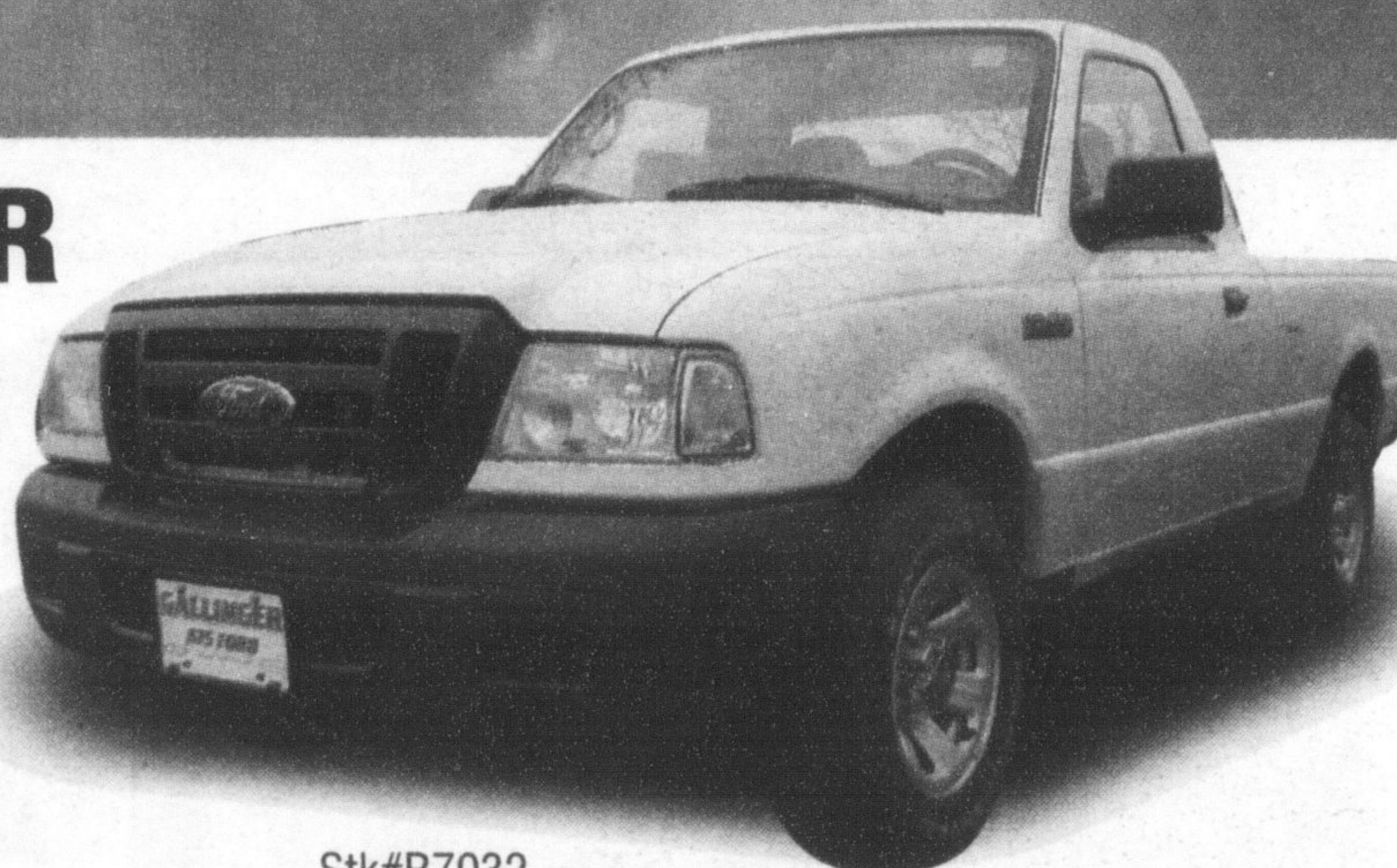
## GALLINGER LINCOLN

*Value and Trust since 1967*

### 2007 FORD RANGER XL REGULAR CAB

2.3 L engine, air, 60/40  
 cloth seats, BOXLINER

**\$15,874<sup>†</sup>**



Stk#R7032

**NO CHARGE  
 BOXLINER**

**plus**

**\$1000  
 ACCESSORIES AT NO  
 EXTRA CHARGE\***

**SUPER DUTY**



Stk#F7026

**2007 Ford F-150 Supercrew  
 XLT 4x4 4.6 L engine, V8, auto, air,  
 trailer tow, deluxe mirror pkg., chrome  
 running boards & more.**

**\$399<sup>\*/mo</sup>**



Stk#F8003

**\$839<sup>\*/mo</sup>**

**2008 Ford F-250 4x4 Supercrew  
 6.4 L diesel, 5 spd. auto, tubular step  
 bars, 20" alum wheels, Fx4 Capt. Chairs,  
 heated seats, tow command, and more.**

\* 48 month RCL lease 80,000 kms allowed \$3,000 due on delivery. Taxes & license extra.  
 †Freight, taxes & license extra.

**GALLINGER**

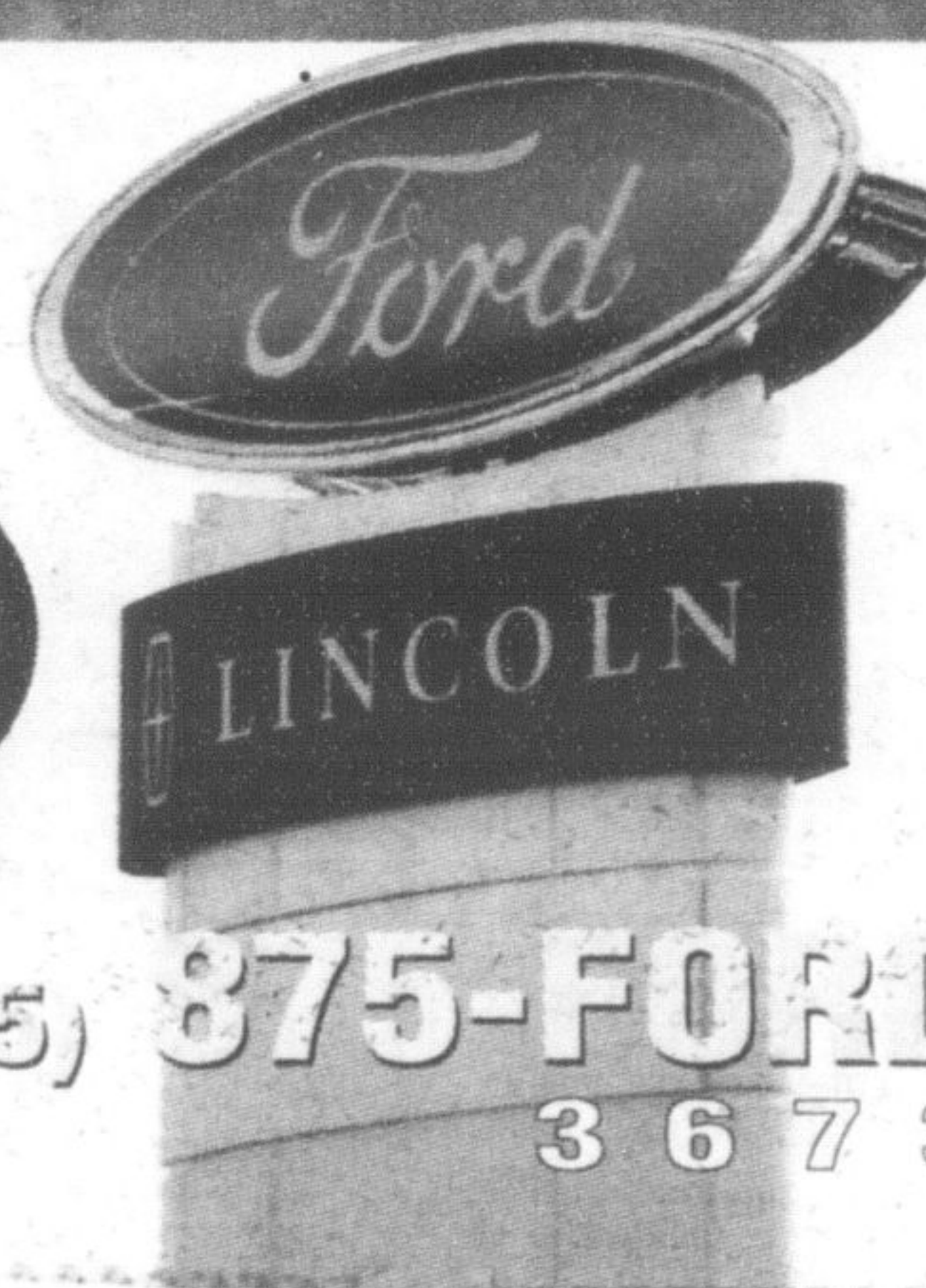
FORD LINCOLN

655 MAIN STREET EAST. MILTON

[www.gallingerford.com](http://www.gallingerford.com)

SALES • LEASING • SERVICE • PARTS • COLLISION CENTRE

Direct  
 Parts Line  
 905-875-0111



(905) 875-FORD  
 3 6 7 3