

## Champion relocates

The Milton Champion has found an office location that'll allow its entire staff to be together once again since a fire ripped through its Main Street office last month.

The new office is located at 555 Industrial Dr., on the second floor. Half the staff is already there — they moved Friday afternoon — while the others will be joining them in the weeks to come.

Currently, the editorial, production and circulation departments are boarding with their sister paper, The Oakville Beaver.

The new space will serve as a temporary location until a permanent location can be secured.

The move is being made in stages as computer equipment arrives, said advertising director Wendy McNab.

Residents who need to pick up a paper are welcome to do so at the new location, but with limited storage there'll be a maximum of one paper per person.

Walk-in hours are 9 a.m. to 4:30 p.m. Monday to Friday.

The building is equipped with an elevator.

The Champion's phone number will remain the same, as will staff members' extensions. The Champion can be reached at (905) 878-2341.

McNab wants to thank Milton's Holiday Inn Express for acting as a temporary home for the advertising, classified and sales departments, as well as the general public for their understanding during this somewhat chaotic time.

"I'd like to thank all the customers, readers, and businesses in Milton for their patience during this ordeal," McNab said, adding, "We are back in business and open to the public."

## Plan open house tomorrow

Local residents can share their thoughts on the Region's 2007-2010 Strategic Plan at an open house tomorrow evening.

The session will run from 7 to 9 p.m. at Hugh Foster Hall, with a staff presentation at 7:30 p.m. on the plan's draft themes and goals that will set out regional council's vision for the next four years.

Staff will pass along the feedback for council members to consider while finalizing the plan over the coming months.

For more information visit [www.halton.ca/strategicplan](http://www.halton.ca/strategicplan).

Those who can't make it to the open house can still submit their comments to the Region through an on-line feedback form at [www.halton.ca/stratplanconsult](http://www.halton.ca/stratplanconsult).

## Changes made to childcare subsidy process

The Region of Halton is reminding local residents that the Province has introduced important changes to the eligibility process for childcare subsidies.

Families who need help covering the cost of childcare will need to provide information about their income level based on their most recent income tax submission.

The simplified approach will use the family's income to determine eligibility. Either an income tax notice of assessment or childcare tax benefit notice will need to be provided.

Families with a net income of less than \$20,000 per year can be eligible for full childcare subsidy.

Families with a net income of \$20,000 and more per year can be eligible for partial subsidies on a sliding scale.

Parents or those who know of a family who has difficulty paying the full cost of childcare can contact Halton Region's childcare services at (905) 825-6000.

They can also visit [www.halton.ca](http://www.halton.ca) to access further information on income testing.

## Real incentive needed: Dion

• from DION on page A1

sive development of green technologies here in Canada," Dion said.

When asked by the Champion what a carbon budget would mean for the natural gas-fired power plant planned for land near the Halton Hills/Milton border, Dion said he's been told that the facility will already be a very clean one.

"We want to create an incentive for clean solutions," he noted.

Those in attendance at the ecoSummit also had a chance to share their thoughts with Dion.

Milton resident Paul Tate suggested that to be friendlier to the environment, roads should be built out of concrete instead of asphalt.

The Liberal leader was asked if he would introduce legislation to force the auto industry to produce and sell electric vehicles, to which he said yes.

Turner also accepted questions over the Internet, with one person asking Dion why he didn't propose the carbon budget when he was the minister of the environment.

Dion pointed out that he wasn't the leader then and also said he has better ideas today.

"I wish I would've invented it three or four years ago," he said.

Melanie Hennessey can be reached at [mhennessey@miltoncanadianchampion.com](mailto:mhennessey@miltoncanadianchampion.com).

### BEST BUY CORRECTION NOTICE

To our valued customers: We apologize for any inconvenience caused by an error in our flyer dated: March 16 - March 22.

Product: Rocky Balboa. On page 4 of the March 16th flyer we showed this movie as the Blu-ray edition for \$24.99, when in fact the DVD version is \$24.99. Customers can purchase the Blu-Ray edition for \$34.99. SKU: M2127378

**5 months  
4 credits  
20 new friends  
1 awesome experience**



The Bronte Creek Project offers  
**TWO HIGH SCHOOL PROGRAMS**

For School Year 2007 / 2008

**BPC: ENVIRONMENTAL LEADERSHIP PROGRAM**

Grade 11 or 12

Four credits—grade 11 and 12

Hike along the Niagara Escarpment

Rock climbing

Teach Earthkeepers to elementary students

5-day adventure trip in Algonquin or Temagami

**TRAILHEAD:**

**COMMUNITY EXPLORATION & ADVENTURE**

Grade 10

Four credits—grade 10 and 11

Field trips in your community

Wilderness travel

Teach Earthkeepers to elementary students

Both programs are located in a beautiful natural setting next to the Niagara Escarpment in Halton

**Apply to the Bronte Creek Project!**

1. Download an application from our web site
2. Submit it to your guidance office by Wednesday, April 4th

More Information:  
905-331-3500

[www.brontecreekproject.org](http://www.brontecreekproject.org)  
[staff@brontecreekproject.org](mailto:staff@brontecreekproject.org)

Bronte Creek Project  
Gary Allan High School  
Halton District School Board



**Neo Centrix  
Salon and Spa**

FULL HAIR & ESTHETIC SERVICES

**MARCH  
In-House Specials!**

Color/Cut &  
Blowdry

**\$75**

Waxing

**10% off**

All Retail

**10% off**

Main & Wilson • 17 Wilson Drive, Milton  
(905) 693-0878

Winter Hours: Mon Closed, Tues 9-7, Wed 9-8, Thurs 10-9, Fri 9-7, Sat 9-3, Sun Closed

I.C.O.N. • A/G • MATRIX • WELLA • YON-KA • O.P.I. • CREATIVE

The True  
Europe Experts

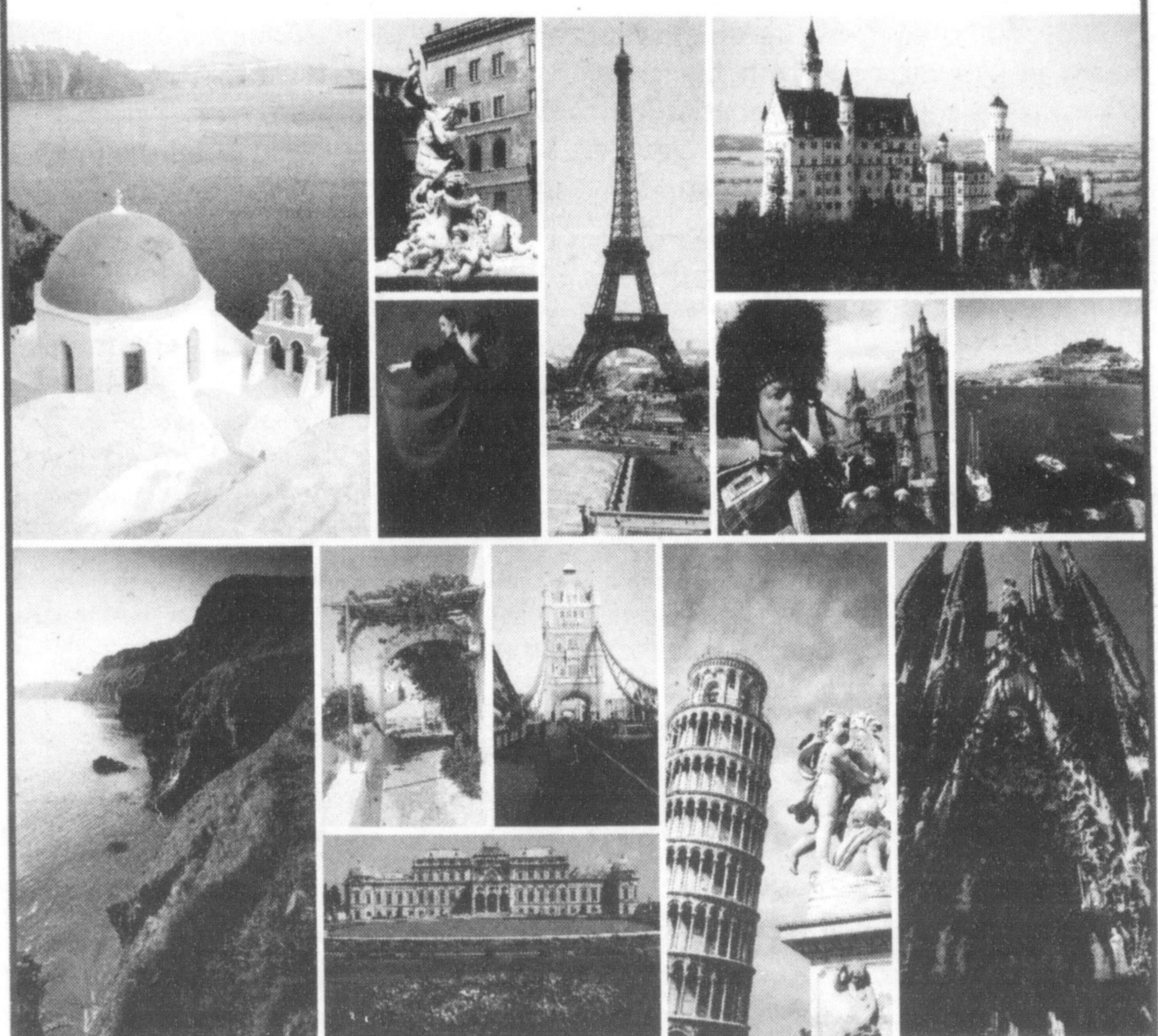
**transat  
HOLIDAYS**

True travel.

Save  
UP TO  
\$400  
per couple

Early booking savings on all Europe packages. Book by March 31, 2007!

Discover the most complete and diverse selection of Europe vacation options. Experience our new destinations in Spain, Italy, Greece & Austria or re-discover old favourites in Great Britain, France and many other countries.



Let us guide you through an unforgettable European experience!

\$400 per couple (\$200 per person) savings applies to Greece packages. \$150 per person saving for Spain & Austria. For all other destinations, a \$100 person saving applies. Book by March 31!

20 Years  
What a world!

Visit us at the Wine & Cheese Show!

March 23 - 26, 2007, International Centre