

Weekend SPOTLIGHT

YOUR REGIONAL REAL ESTATE PAGE

RE/MAX REALTY SPECIALISTS INC. BROKERAGE

RUSS, MYRNA & TODD WORGAN

Sales Representatives

Office: 905-828-3434

www.theworgans.com

Remember it's Worgan not Morgan.



OPEN HOUSE • SUN 1-4 PM

226 SHERWOOD RD

Follow Open House signs from Main St. & Sinclair.



\$314,900

BRISTOL PARK!

Fabulous curb appeal & prof. landscaped with raised tumbledstone walkway, stairs & patio! Approx. 1860 sq.ft. this semi is bright, spacious and offers a lovely open concept. Popular 2nd fl. laundry + media loft with walkout to upper balcony, smooth ceilings thruout, surround sound + IBM Home Director System. Follow signs from Main St. & Sinclair. Offered at \$314,900.

OPEN HOUSE • SUN 1-4 PM

1279 ROPER DRIVE

Follow signs from Main St. & Maple.



\$499,900

MAIN ST. VILLAGE

Don't miss out on this newly listed 5 bedroom Beaverhall approx. 3000 sq.ft. with a very open prof. fin. entertaining basement! Impressive 9 Ft. ceilings, open concept, walkout to patio, gleaming hardwood floors, beautifully u/g kitchen, 3 full baths on 2nd level, walkout to upper balcony, wired for home theatre system! Offered at \$499,900.

NEW LISTING



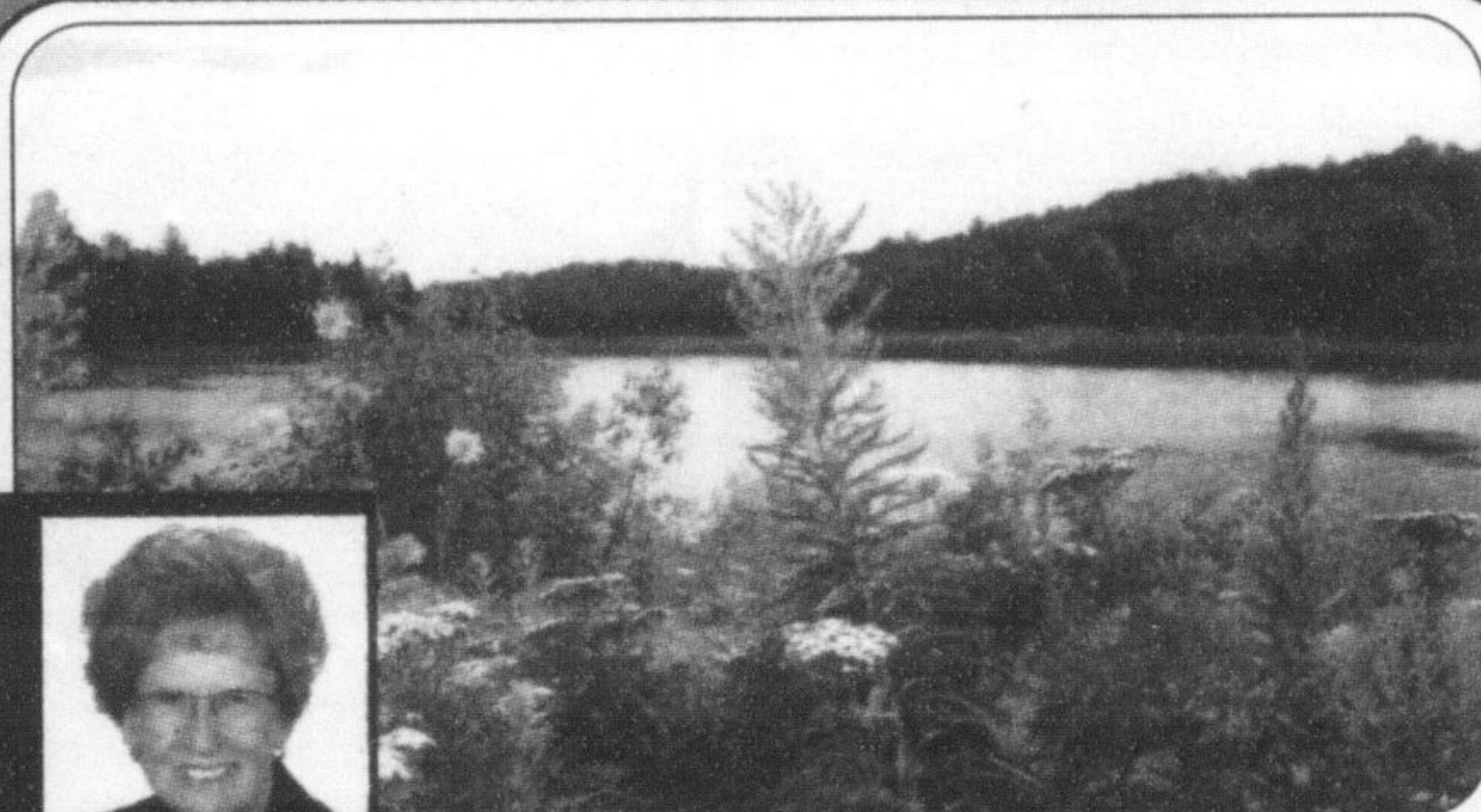
KIM COULTER
Sales Rep.
Direct Line
905-691-1148
905-878-8101

ROYAL LEPAGE
Meadowtowne Realty Inc. Brokerage

TOWN AND COUNTRY

Gorgeous, new 2550+ sq ft, 1/2 acre+ lot on the edge of town. Less than 10 minutes to 401/407! Grand foyer, 9' ceilings, oak stairs, hardwood & ceramics, rounded corners, main floor laundry, 4 lrg bdrms, 3 full bthrms, luxurious master ensuite, walk-ins are 7'10" X 7'7" and 7'7" X 5'4". Eat-in kitchen has breakfast bar & walk-out to a covered deck. Huge picture windows look out onto scenic pastures & forests. Access from house to large double garage/drive with 9' doors, parks 2+6 cars.

Call Kim Coulter at 905-691-1148.



NORINNE KILGOUR
Salesperson
1-888-833-1945

RE/MAX REAL ESTATE CENTRE

SECLUDED WOODED PARADISE

Only 15 minutes to Hwy. 401. You won't be disappointed when you enter the tree lined drive to 61 acres with home & 80'x40' barn/workshop, and 25 acre pond. Whatever your lifestyle, nature, fishing, horses or hobby, this will meet your needs. Listed at \$849,900. Call to view.

| | | | | | | | | | | | | | |
|----|----|----|----|----|----|----|----|----|----|----|----|----|----|
| 1 | 2 | 3 | 4 | 5 | 6 | 7 | 8 | 9 | 10 | 11 | 12 | 13 | |
| 14 | | | | | 15 | | | | | 16 | | | |
| 17 | | | | | 18 | | | | | 19 | | | |
| 20 | | | | 21 | | | | | | 22 | | | |
| 23 | | | 24 | | | | | 25 | 26 | | | | |
| 27 | | | | | | | 28 | | | | 29 | 30 | 31 |
| 32 | 33 | | | | | | 34 | | | | 35 | | |
| 36 | | | | | | | 37 | 38 | | | 39 | | |
| 40 | | | | | | 41 | | | | | 42 | | |
| 43 | | | | | | 44 | | | | 45 | | | |
| 46 | | | | | | | | | 47 | | | | 48 |
| 49 | 50 | 51 | | | | | | 52 | | | | 53 | 54 |
| 55 | | | | | | | 56 | 57 | | | 58 | | |
| 59 | | | | | | | 60 | | | | 61 | | |
| 62 | | | | | | | 63 | | | | 64 | | |

ACROSS

- 1. To be, in Parea
- 5. Fed the kitty
- 10. Witches
- 14. After that
- 15. Achier
- 16. Annapolis inst.
- 17. Hostile god
- 18. Petitioners
- 19. Solo promgoer
- 20. 2,000 pounds
- 21. Dejected mood
- 22. Expense vouchers
- 23. Flowers
- 25. Exclusive
- 27. Hollow, as a threat
- 28. Anne Of The Days
- 32. ___ up (tipped off)
- 34. Ready
- 35. "Pooh" character
- 36. Biblical book
- 37. Actor Claude
- 39. Iced tea flavoring
- 40. Female rabbit
- 41. Nosegay holder
- 42. Mambo steps
- 43. Esteemed
- 45. Robin's retreat
- 46. Greyhound rider
- 47. Nightclubs
- 49. Rub the wrong way
- 52. Watergate burglar
- 53. Hack's vehicle
- 55. Tramp
- 56. Director Sergio

DOWN

- 1. Coup d' ___
- 2. Pulse
- 3. Signed up again
- 4. Naval officer (abbr.)
- 5. Take over
- 6. Parts of speech
- 7. "Star ___"
- 8. Election add-on
- 9. Welby and Kildare (abbr.)
- 10. Quiets
- 11. Wine region
- 12. Bothersome insect
- 13. Sinks in the middle
- 21. Bend
- 22. Lead
- 24. Poems of exalted emotion
- 25. Hebrew letter
- 26. Dropper's word
- 28. Heard a case
- 29. Blueblood
- 30. Words accompanying "Don't touch!" (2 wds.)
- 31. Morse units

- 32. Roe v. ___
- 33. Church picture
- 37. Recherche
- 38. On the ocean
- 39. Male (abbr.)
- 41. ___ of Kashmir
- 42. Brat
- 44. Exertion
- 45. Feet between bases on a diamond
- 47. Nantucket sights
- 48. Finnish bath
- 49. Actor Everett
- 50. Kachina ceremony devotees
- 51. Busy as ___ (2 wds.)
- 52. Gala giver
- 54. The ___ Queen (Erdrich novel)
- 56. Ad ___
- 57. Wind dir.
- 58. Entertainment sources



ANDREW G. CASALE
Sales Representative
905-812-1100
905-693-9865



\$354,900

MATURE AREA OF TOWN

This Lovely 4 Br Home In A Beautiful Mature Area Of Milton Features: Eat-In Kitchen, Large & Bright Living Room, Cozy Family Room With Fireplace & Walkout To Deck, Formal Dining Rm. Second Flr Features Large Master Br With Newly Renovated Gorgeous 4 Pcs. Ensuite & W/I Closet. Second 4 Pcs Bath Has Been Renovated With New Cabinetry, Granite Counter And New Floor. The Other 3 Bedrooms Are A GoodSize And Have Large Closets And Broadloom. Lovely Home In Lovely Mature Area On A Great Lot.

Minicom SOLUTIONS REALTY INC. BROKERAGE

OPEN HOUSE SAT MARCH 17 & SUN MARCH 18 2-4 PM 659 MARLEY CRES



Too New For Photo

\$439,000

Hawthorne Village

Beautiful 4 bdrm, detached, 2-sty home. Combined Liv & Din rm, 9' vaulted ceilings in LR & DR, Glass Enclosed Shower In Master Ensuite, Window Seat In Br, California Shutter In Family Room. Double Door Entry W/ Cermamic In Foyer, 2 Car Attached Garage. Many Upgrades!

MARGARET McRAE
Broker
647-519-1332
416-690-6363

HOMELIFE HIGHER STANDARDS
HOMELIFE/CINERMAN Real Estate Ltd., brokerage

STEVE MILLER Custom Contracting
Specializing in Renovations

| | | |
|----------|------------|----------|
| Cabinets | Framing | Fences |
| Trimming | Electrical | Gazebos |
| Painting | Roofing | Flooring |
| Drywall | Decks | Plumbing |

Call Steve today!
905-462-0171
stevemillercustomcontracting@yahoo.ca
Servicing Milton & the Surrounding Area.



JACOB VANDERBREGGAN
Sales Representative
Office: 905-878-8101
jacob@royallepage.ca



ECCENTRIC ENTERTAINER

In beautiful Moffat, this house has all the bells and whistles from Re-claimed railings to Geo-thermal heating, sitting on 1 acre surrounded by conservation, Large Kitchen, High ceilings, Pool w/walk out deck, separate entrance to 2nd floor, 2 car garage w/ pull through, this one won't disappoint!!!

DIRECT LINE
905-876-5656
www.miltonhomes.ca
ROYAL LEPAGE
Meadowtowne Realty, Brokerage



\$294,800

Better than new Linbrook model \$10K in upgrades in kitchen, premium lot oversized porch, gas lines in and out, rare Brazilian hardwoods, separate roman tub and shower, 3 bedrooms with upgraded broadloom and pad. Call Annette direct for a private viewing.

OPEN HOUSE SATURDAY 2-4 PM 1130 BARR CRES



COLDWELL BANKER TERREQUITY REALTY, BROKERAGE
ANNETTE TREMMEL, Sales Rep. 416-495-3838

CROSSWORD ANSWERS

| | | | | | | | | | | | | |
|---|---|---|---|---|---|---|---|---|---|---|---|---|
| E | T | R | E | A | N | T | E | D | H | A | G | S |
| T | H | E | N | S | O | R | E | R | U | S | N | A |
| A | R | E | S | S | U | E | R | S | S | T | A | G |
| T | O | N | F | U | N | K | C | H | I | T | S | |
| B | L | O | O | M | S | S | O | L | E | | | |
| I | D | L | E | T | H | O | U | S | A | N | D | |
| W | I | S | E | D | R | I | P | E | R | O | O | |
| A | C | T | S | R | A | I | N | S | M | I | N | T |
| D | O | E | V | A | S | E | P | A | S | O | S | |
| E | N | D | E | A | R | E | D | N | E | S | T | |
| F | L | E | A | D | I | S | C | O | S | | | |
| C | H | A | F | E | H | U | N | T | C | A | B | |
| H | O | B | O | L | E | O | N | E | T | R | U | E |
| A | P | E | R | I | N | S | E | T | V | A | N | E |
| D | I | E | T | B | E | T | S | Y | S | T | A | T |